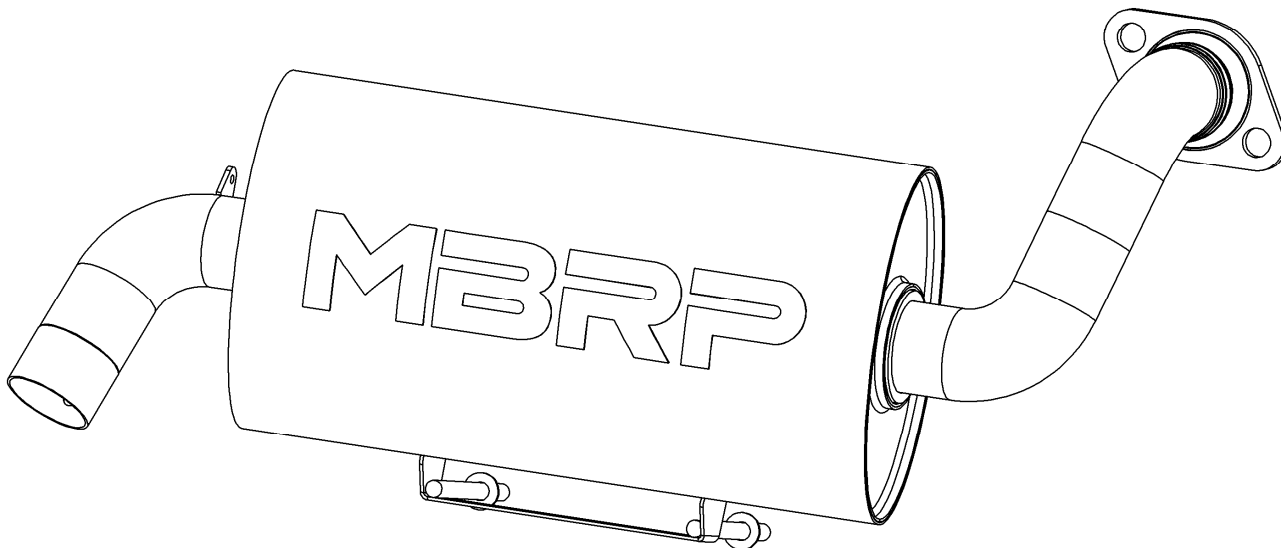


AT-9519SP

OVAL SLIP-ON EXHAUST ASSEMBLY
2016-2020 POLARIS RZR S 1000, GENERAL 1000

MBRP®



PLEASE READ BEFORE STARTING INSTALLATION

While MBRP Ltd. has made every effort to ensure that all components of this system are of superior quality and properly packaged, it is the installer's responsibility to ensure the following before removal of the factory exhaust:

- that ALL components shown above are present.
- that ALL mating components fit together.
- that there are no damaged components.
- that the system you have purchased is appropriate for your vehicle year, model and configuration.
- that the system will not interfere with any modifications previously installed or planned.
- that you have read and understand these instructions.

If you have any questions or are uncertain about any aspect of the installation of this system to your vehicle please contact your dealer before commencing installation.

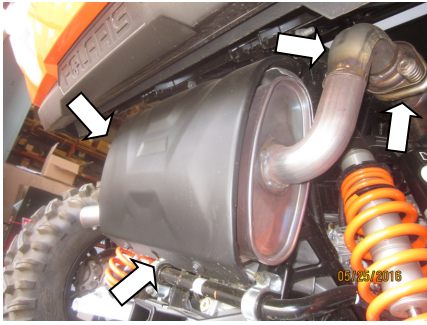


Figure 1

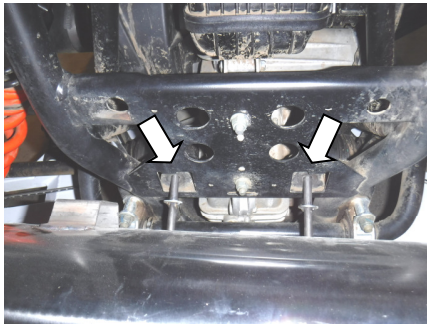


Figure 2



Figure 3



Figure 4



Figure 5

Removal of Stock Exhaust:

1. Remove the upper and lower springs securing the muffler to the vehicle. Do not discard the springs.

Refer to Figure 1.

2. Remove the 2 bolts and springs securing the muffler inlet to the exhaust pipe. Do not discard them. Leave the gasket on the vehicle exhaust pipe.

Refer to Figure 1.

3. Remove the muffler by sliding the hangers out of the rubber isolators.

4. Remove the spark arrester from the muffler outlet. Retain the hardware and spark arrester assembly.

Installation of MBRP Exhaust:

1. Slide the hanger rods into the rubber isolators on the vehicle and mate the **Muffler Assembly** inlet pipe to the end of the exhaust pipe. **Refer to Figure 2.**

2. Secure the **Muffler Assembly** by attaching the previously removed spring at the lower location, using the mounting hole in the support bracket. **Refer to Figure 3.**

3. Secure the inlet using the previously removed stock bolts and springs.

Refer to Figure 4.

4. Install the factory upper spring into the tab on the **Muffler Assembly** tail pipe. **Refer to Figure 5.**

5. Install the factory spark arrester into the **Muffler Assembly** using the factory hardware.

Refer to Figure 5.

6. Ensure there is adequate clearance between the exhaust system and other parts of the vehicle or accessories. Carefully check with the box in the dump position and the tailgate lowered if so equipped.



Congratulations! You are ready to begin experiencing the improved performance and driving excitement of your MBRP ATV Exhaust upgrade. We know you will enjoy your purchase.