

ITEM NO.	PART NUMBER	DESCRIPTION	Default/ QTY.
1	2014 Sprinter Van 3500, Frame	2014 Mercedes Benz Sprinter Frame Mockup	1
Assemblies			
2	20801	Swing Arm	1
3	20802	Assembly - Top Frame Swing Arm Mount (PS)	1
4	20803	Assembly - Top Frame Swing Arm Mount (DS)	1
5	20805	Assembly - Top Frame, Lower	1
6	20806	Assembly - Top Frame, Upper	1
7	20807	Assembly - Shackle Link	4
Parts			
8	20093	(TA) Knuckle Bushing	2
9	20812	Bushing - L 3-1/8" ID 17/32 OD 3/4"	2
10	20813	Bushing - L 3-1/4" ID 17/32" OD 3/4"	2
11	20829	Bushing - L 3" ID 5/8" OD 1-1/8"	2
Purchased Parts			
12	20092	Knuckle Press-in bushing	8
13	80011-10966	Magnet - Supplied in 80011	1
14	80011-24060	ECU - Height Control	1
15	80011-Plastic Washer	Plastic Washer Supplied in 80011	1
16	80012-6905	Firestone 6905	2
17	80016	Straight Air Fitting 1/4" NPT to 1/4" Tube (SMC)	2
Hardware			
18	12007	BOLT - 1/2"-20 X 1 1/2" GR8	2
19	12037	BOLT - 1/2"-20 X 5" GR8	8
20	12110	BOLT - 1/4"-20 x 1" - GR5 - 7	2
21	12216	Bolt - 3/8"-16 x 1-1/2" - GR5	4
22	12631	BOLT - 7/8"-14 X 5 1/2" - GR8	2
23	13004	Washer - 1/2" - Flat - SAE	24
24	13030	Washer - 7/8" - Flat - SAE	4
25	13046	Washer - Locking - 3/8"	4
26	13050	Wahser - Locking - 1/2"	4
27	13100	Nut - Locking - 1/4" - 20 - GR5	2
28	13104	Nut - Locking - 1/2"-20 - GR8	10
29	13130	Nut - Locking - 7/8"-14 - GR8	2
30	13144	NUT - 1/2"-13 - GR5	4
31	14048	Machine Screw - #10 - 24 X 1.25" - Allen- Countersunk	1
32	14050	Nut - Locking - #10-24	1
33	M16 x 1.25 - 120mm	M16 x 1.5 - 120mm Flange Bolt GR10.9	4
34	M16 x 1.25	M16 x 1.5 Flange Nut GR10.9	4

Kelderman

PROPRIETARY AND CONFIDENTIAL

THE INFORMATION CONTAINED IN THIS DRAWING IS THE SOLE PROPERTY OF KELDERMAN MFG. INC. ANY REPRODUCTION IN PART OR AS A WHOLE WITHOUT THE WRITTEN PERMISSION OF KELDERMAN MFG. INC. IS PROHIBITED.

UNLESS OTHERWISE SPECIFIED:
 DIMENSIONS ARE IN INCHES
 TOLERANCES:
 FRACTIONAL ± 1/32"
 ANGULAR: MACH ± 1 BEND ± 1
 TWO PLACE DECIMAL ±.030
 THREE PLACE DECIMAL ±.010

MATERIAL

FINISH

WEIGHT
203.48

DESIGN BY TJA
 Shelf #/ QTY
 NEW DXF
 Run QTY



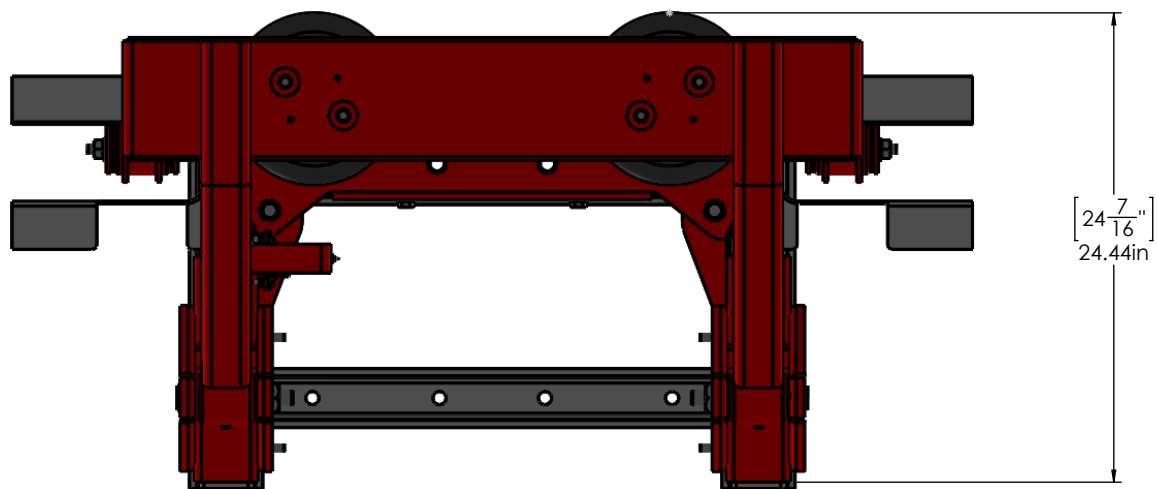
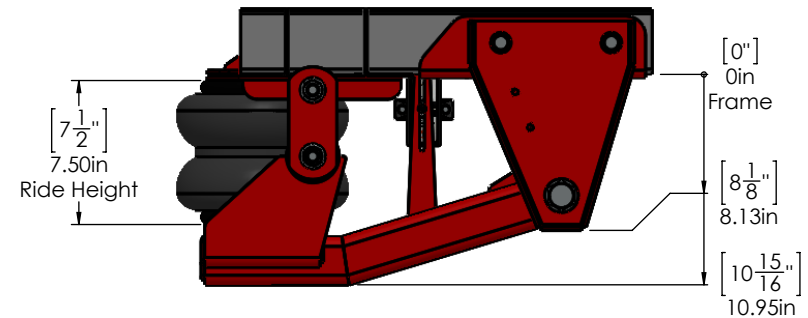
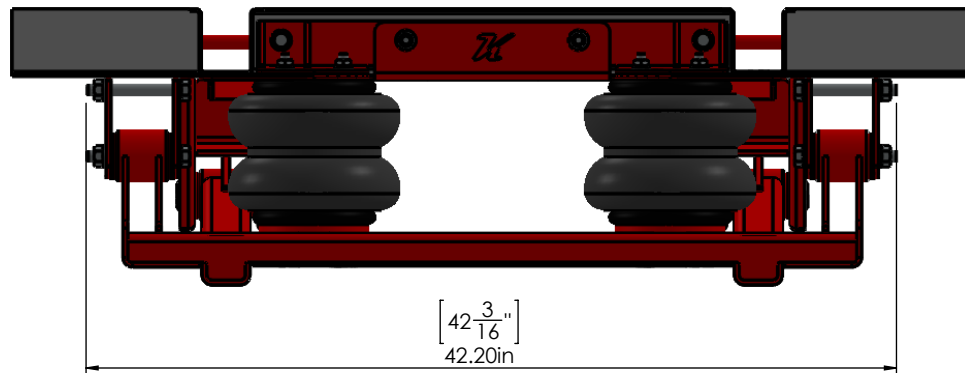
Tuesday, March 25, 2014 3:18:36 PM

Project:
 2014 Mercedes-Benz Sprinter Van, 3500

TITLE:
 Kit - Final Assembly - 2-Bag Rear

SIZE DWG. NO.
A 20800

SCALE: 1:20 DO NOT SCALE DRAWING SHEET 1 OF 9



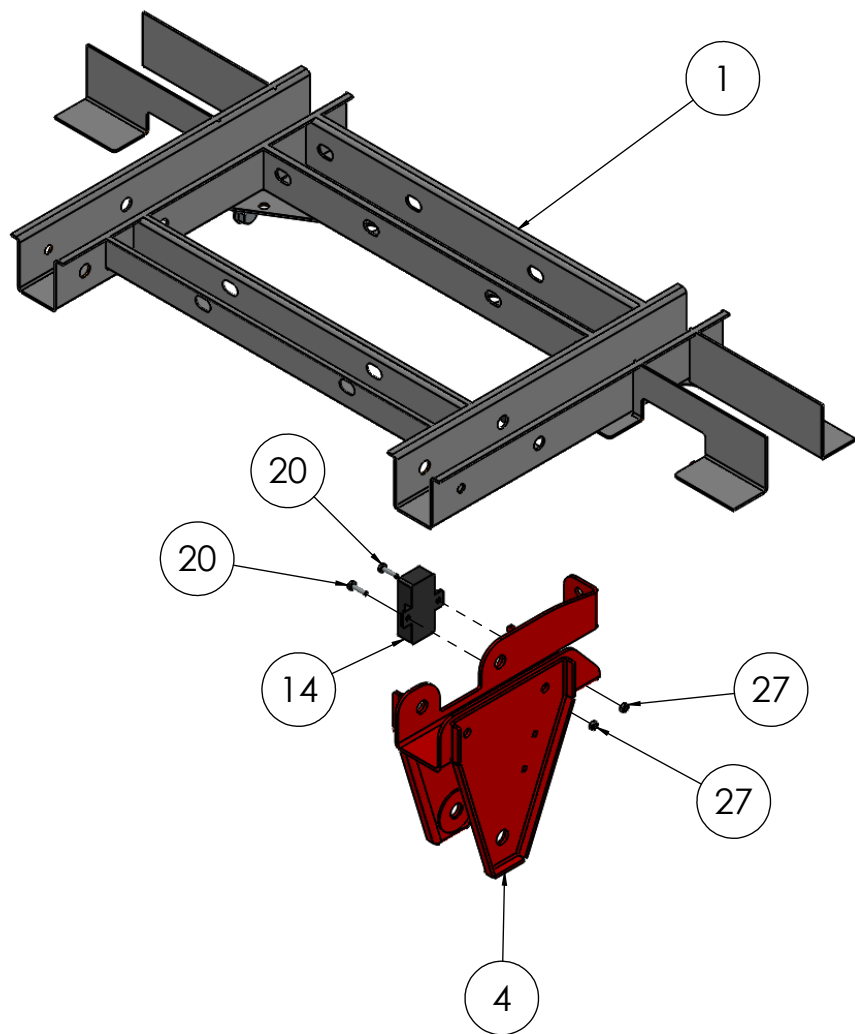
Kelderman
 PROPRIETARY AND CONFIDENTIAL
 THE INFORMATION CONTAINED IN THIS DRAWING IS THE SOLE PROPERTY OF KELDERMAN MFG. INC. ANY REPRODUCTION IN PART OR AS A WHOLE WITHOUT THE WRITTEN PERMISSION OF KELDERMAN MFG. INC. IS PROHIBITED.

UNLESS OTHERWISE SPECIFIED:
 DIMENSIONS ARE IN INCHES
 TOLERANCES:
 FRACTIONAL ± 1/32"
 ANGULAR: MACH ± 1 BEND ± 1
 TWO PLACE DECIMAL ±.030
 THREE PLACE DECIMAL ±.010

MATERIAL
 FINISH
 WEIGHT **203.48**

DESIGN BY TJA
 CHECKED
 NEW DXF
 QTY:

Tuesday, March 25, 2014 3:28:40 PM
 Project: 2014 Mercedes-Benz Sprinter Van, 3500
 TITLE: Kit - Final Assembly - 2-Bag Rear
 SIZE DWG. NO. **A** 20800
 SCALE: 1:20 DO NOT SCALE DRAWING SHEET 2 OF 9



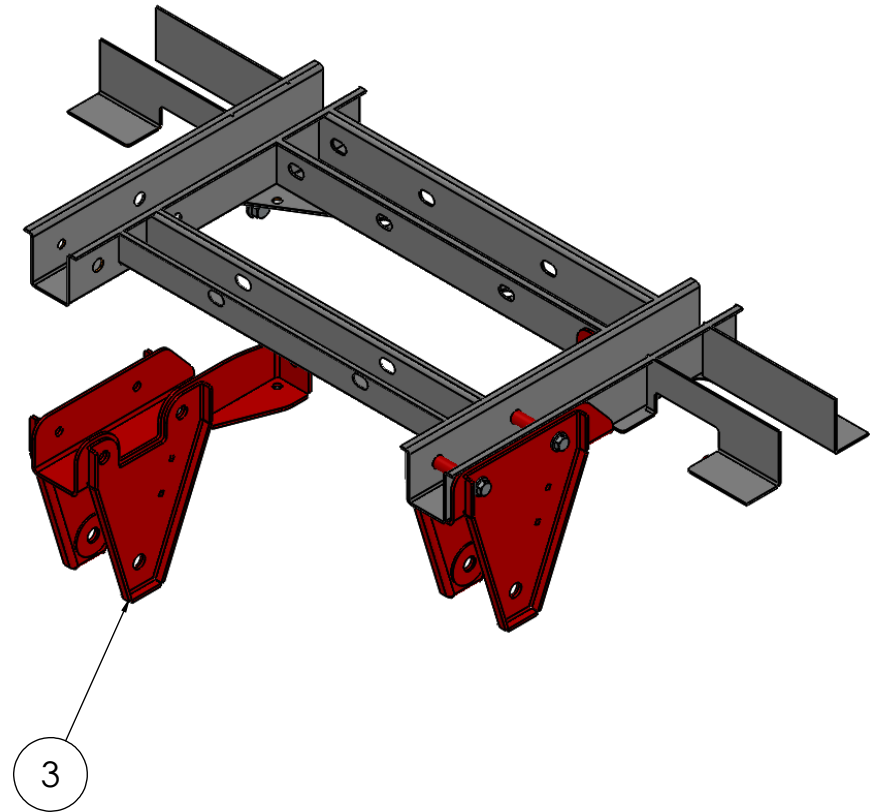
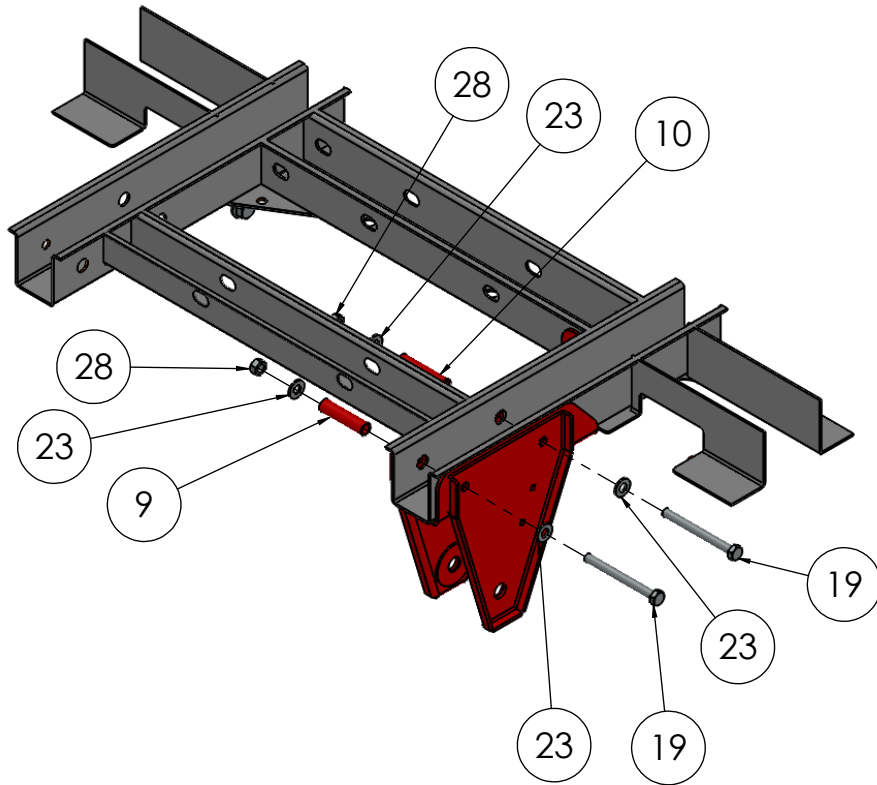
Kelderman
 PROPRIETARY AND CONFIDENTIAL
 THE INFORMATION CONTAINED IN THIS DRAWING IS THE SOLE PROPERTY OF KELDERMAN MFG. INC. ANY REPRODUCTION IN PART OR AS A WHOLE WITHOUT THE WRITTEN PERMISSION OF KELDERMAN MFG. INC. IS PROHIBITED.

UNLESS OTHERWISE SPECIFIED:
 DIMENSIONS ARE IN INCHES
 TOLERANCES:
 FRACTIONAL $\pm 1/32"$
 ANGULAR: MACH ± 1 BEND ± 1
 TWO PLACE DECIMAL $\pm .030$
 THREE PLACE DECIMAL $\pm .010$

MATERIAL
 FINISH
 WEIGHT **203.48**

DESIGN BY TJA
 CHECKED
 NEW DXF
 QTY:


Tuesday, March 25, 2014 3:28:40 PM
 Project: 2014 Mercedes-Benz Sprinter Van, 3500
 TITLE: Kit - Final Assembly - 2-Bag Rear
 SIZE DWG. NO. **A** 20800
 SCALE: 1:20 DO NOT SCALE DRAWING SHEET 3 OF 9



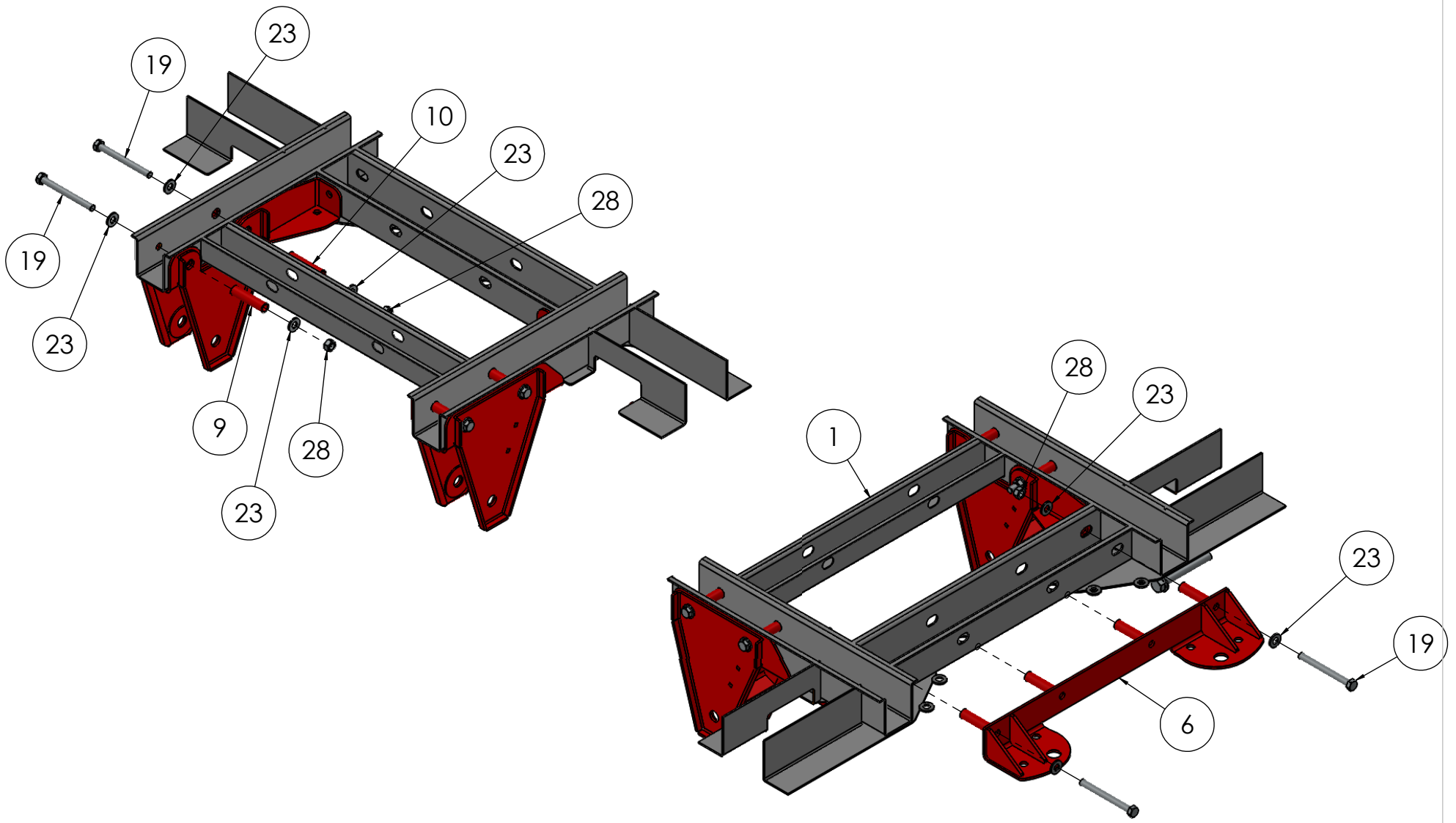
Kelderman
 PROPRIETARY AND CONFIDENTIAL
 THE INFORMATION CONTAINED IN THIS DRAWING IS THE SOLE PROPERTY OF KELDERMAN MFG. INC. ANY REPRODUCTION IN PART OR AS A WHOLE WITHOUT THE WRITTEN PERMISSION OF KELDERMAN MFG. INC. IS PROHIBITED.

UNLESS OTHERWISE SPECIFIED:
 DIMENSIONS ARE IN INCHES
 TOLERANCES:
 FRACTIONAL $\pm 1/32"$
 ANGULAR: MACH ± 1 BEND ± 1
 TWO PLACE DECIMAL $\pm .030$
 THREE PLACE DECIMAL $\pm .010$

MATERIAL
 FINISH
 WEIGHT **203.48**

DESIGN BY TJA
 CHECKED
 NEW DXF
 QTY:


Tuesday, March 25, 2014 3:28:40 PM
 Project: 2014 Mercedes-Benz Sprinter Van, 3500
 TITLE: Kit - Final Assembly - 2-Bag Rear
 SIZE DWG. NO. **A** 20800
 SCALE: 1:20 DO NOT SCALE DRAWING SHEET 4 OF 9



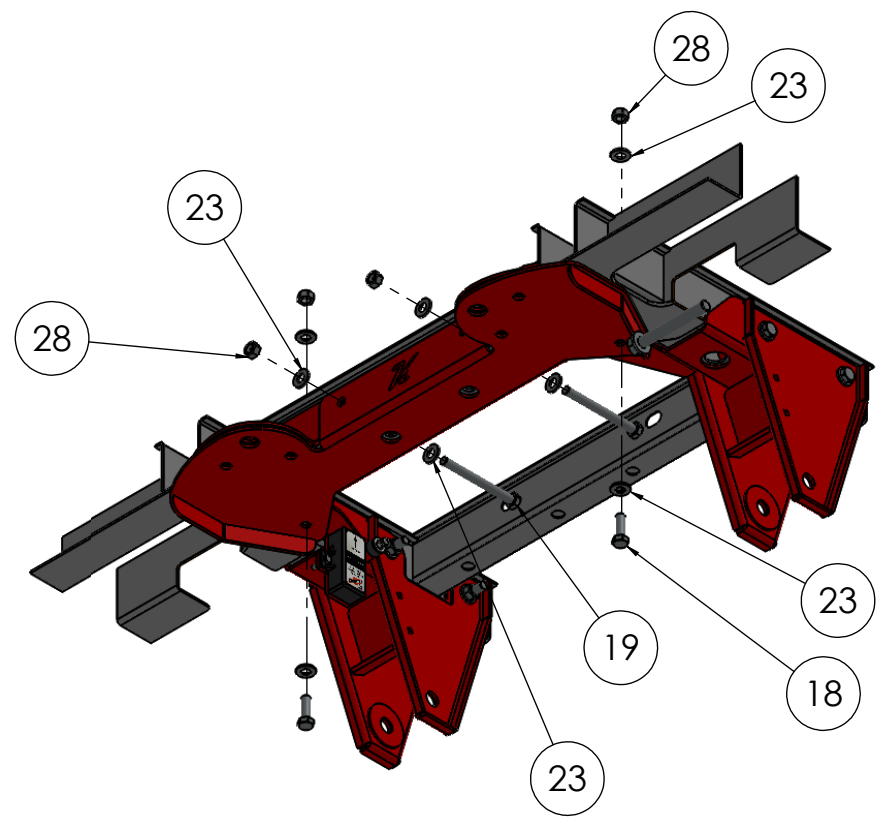
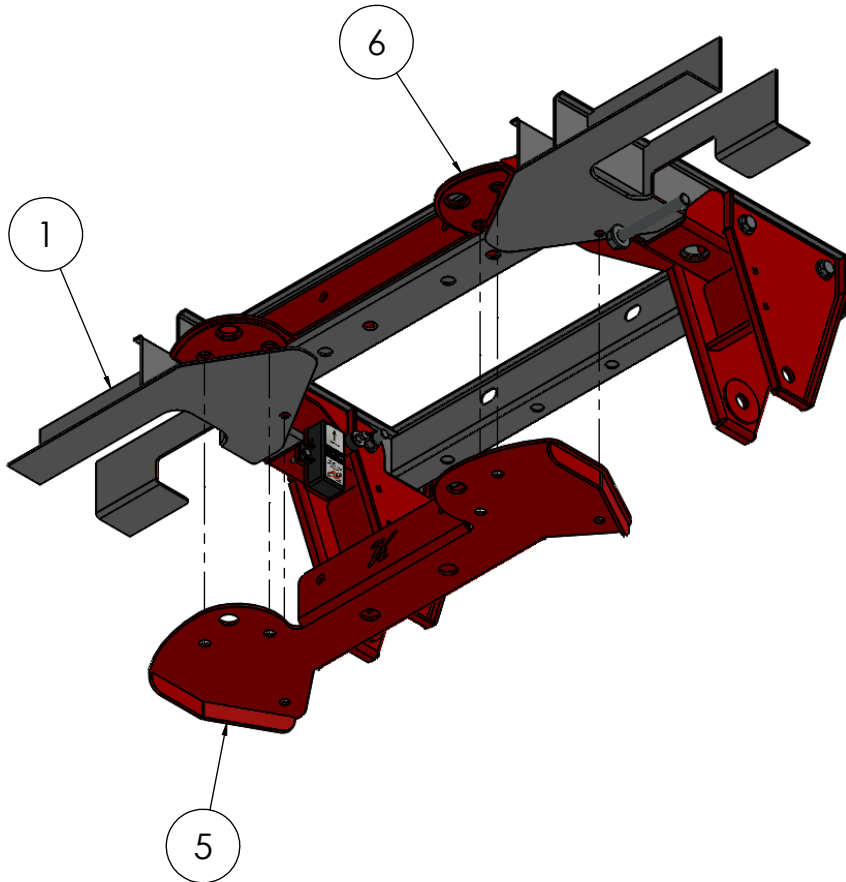
Kelderman
 PROPRIETARY AND CONFIDENTIAL
 THE INFORMATION CONTAINED IN THIS DRAWING IS THE SOLE PROPERTY OF KELDERMAN MFG. INC. ANY REPRODUCTION IN PART OR AS A WHOLE WITHOUT THE WRITTEN PERMISSION OF KELDERMAN MFG. INC. IS PROHIBITED.

UNLESS OTHERWISE SPECIFIED:
 DIMENSIONS ARE IN INCHES
 TOLERANCES:
 FRACTIONAL $\pm 1/32"$
 ANGULAR: MACH ± 1 BEND ± 1
 TWO PLACE DECIMAL $\pm .030$
 THREE PLACE DECIMAL $\pm .010$

MATERIAL
 FINISH
 WEIGHT **203.48**

DESIGN BY TJA
 CHECKED
 NEW DXF
 QTY:

Tuesday, March 25, 2014 3:28:40 PM
 Project: 2014 Mercedes-Benz Sprinter Van, 3500
 TITLE: Kit - Final Assembly - 2-Bag Rear
 SIZE DWG. NO. **A** 20800
 SCALE: 1:20 DO NOT SCALE DRAWING SHEET 5 OF 9



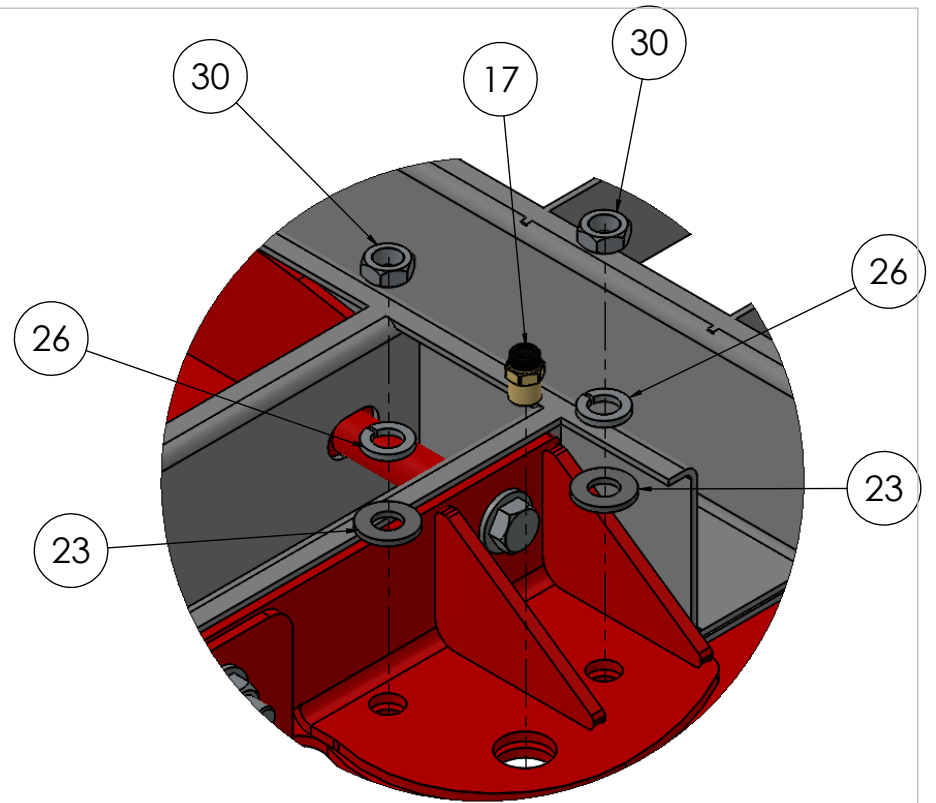
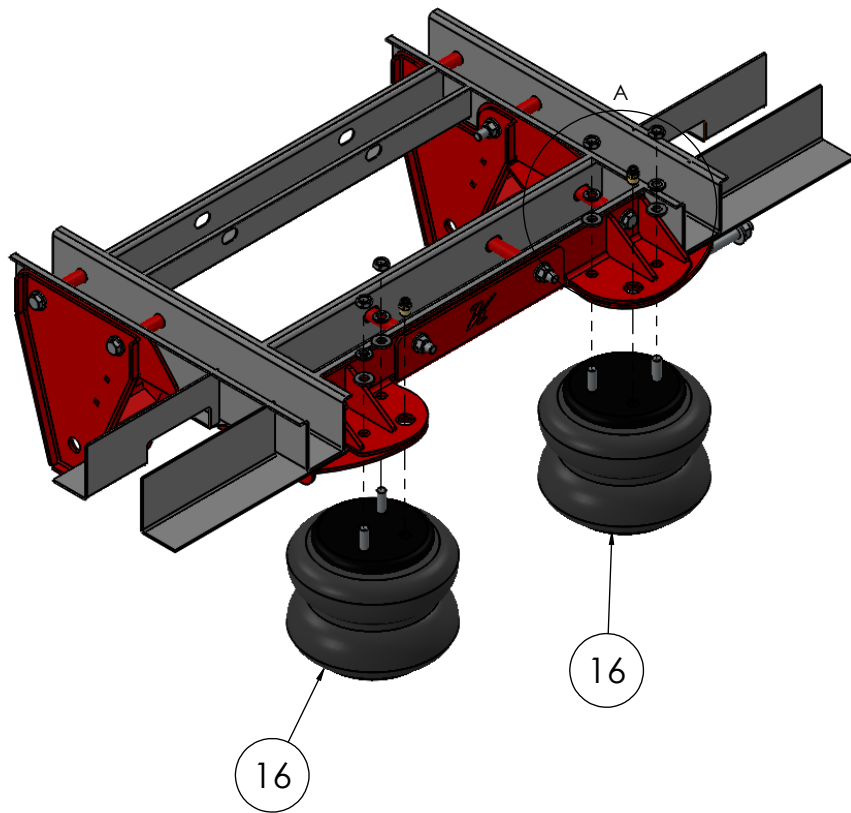
Kelderman
 PROPRIETARY AND CONFIDENTIAL
 THE INFORMATION CONTAINED IN THIS DRAWING IS THE SOLE PROPERTY OF KELDERMAN MFG. INC. ANY REPRODUCTION IN PART OR AS A WHOLE WITHOUT THE WRITTEN PERMISSION OF KELDERMAN MFG. INC. IS PROHIBITED.

UNLESS OTHERWISE SPECIFIED:
 DIMENSIONS ARE IN INCHES
 TOLERANCES:
 FRACTIONAL $\pm 1/32"$
 ANGULAR: MACH ± 1 BEND ± 1
 TWO PLACE DECIMAL $\pm .030$
 THREE PLACE DECIMAL $\pm .010$

MATERIAL
 FINISH
 WEIGHT **203.48**

DESIGN BY TJA
 CHECKED
 NEW DXF
 QTY:


Tuesday, March 25, 2014 3:28:40 PM
 Project: 2014 Mercedes-Benz Sprinter Van, 3500
 TITLE: Kit - Final Assembly - 2-Bag Rear
 SIZE DWG. NO. **A** 20800
 SCALE: 1:20 DO NOT SCALE DRAWING SHEET 6 OF 9




Detail View A:

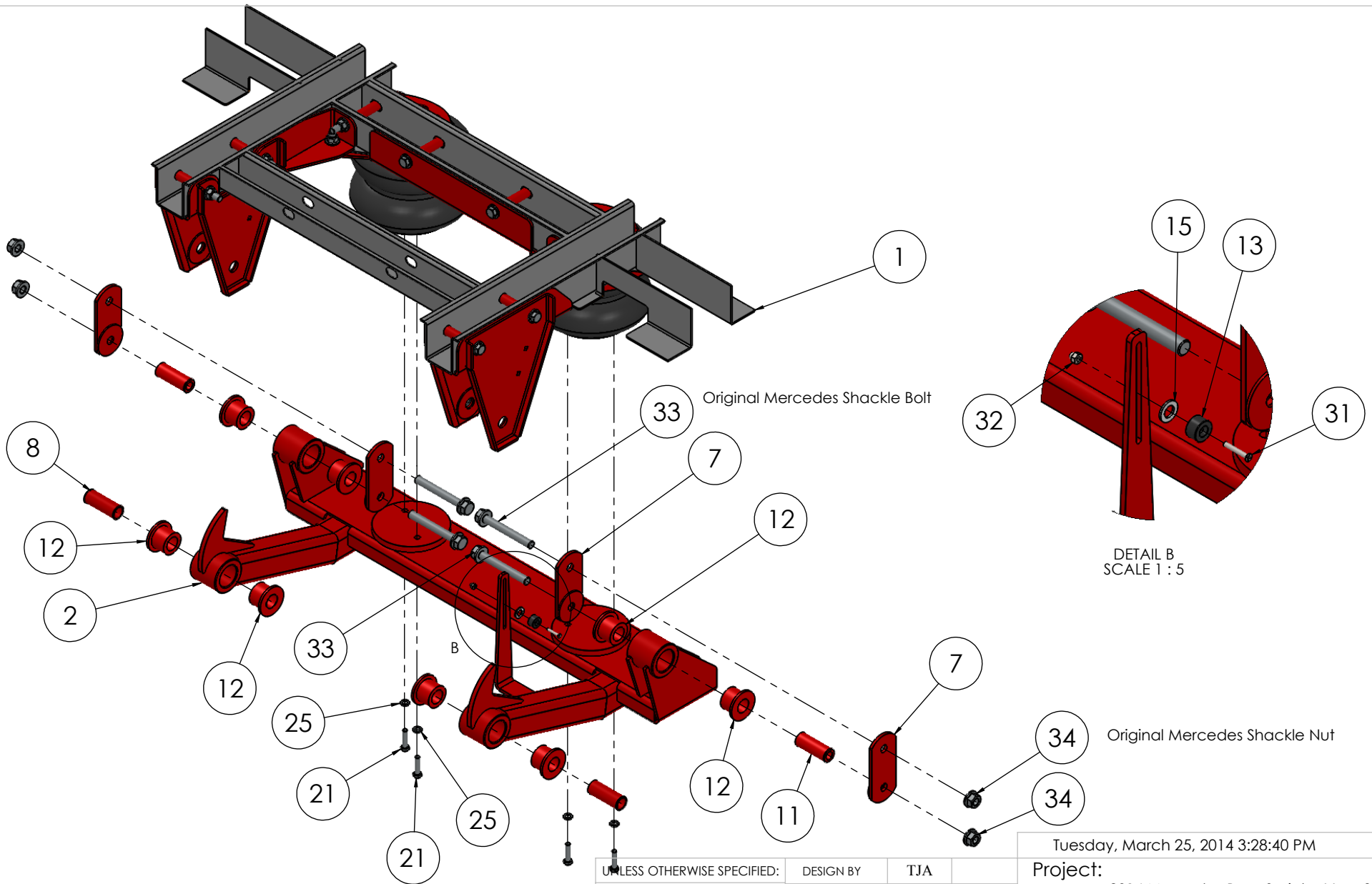
Kelderman
 PROPRIETARY AND CONFIDENTIAL
 THE INFORMATION CONTAINED IN THIS DRAWING IS THE SOLE PROPERTY OF KELDERMAN MFG. INC. ANY REPRODUCTION IN PART OR AS A WHOLE WITHOUT THE WRITTEN PERMISSION OF KELDERMAN MFG. INC. IS PROHIBITED.

UNLESS OTHERWISE SPECIFIED:
 DIMENSIONS ARE IN INCHES
 TOLERANCES:
 FRACTIONAL $\pm 1/32"$
 ANGULAR: MACH ± 1 BEND ± 1
 TWO PLACE DECIMAL $\pm .030$
 THREE PLACE DECIMAL $\pm .010$

MATERIAL
 FINISH
 WEIGHT **203.48**

DESIGN BY TJA
 CHECKED
 NEW DXF
 QTY:


Tuesday, March 25, 2014 3:28:40 PM
 Project: 2014 Mercedes-Benz Sprinter Van, 3500
 TITLE: Kit - Final Assembly - 2-Bag Rear
 SIZE DWG. NO. **A** 20800
 SCALE: 1:20 DO NOT SCALE DRAWING SHEET 7 OF 9



Original Mercedes Shackle Bolt

DETAIL B
SCALE 1:5

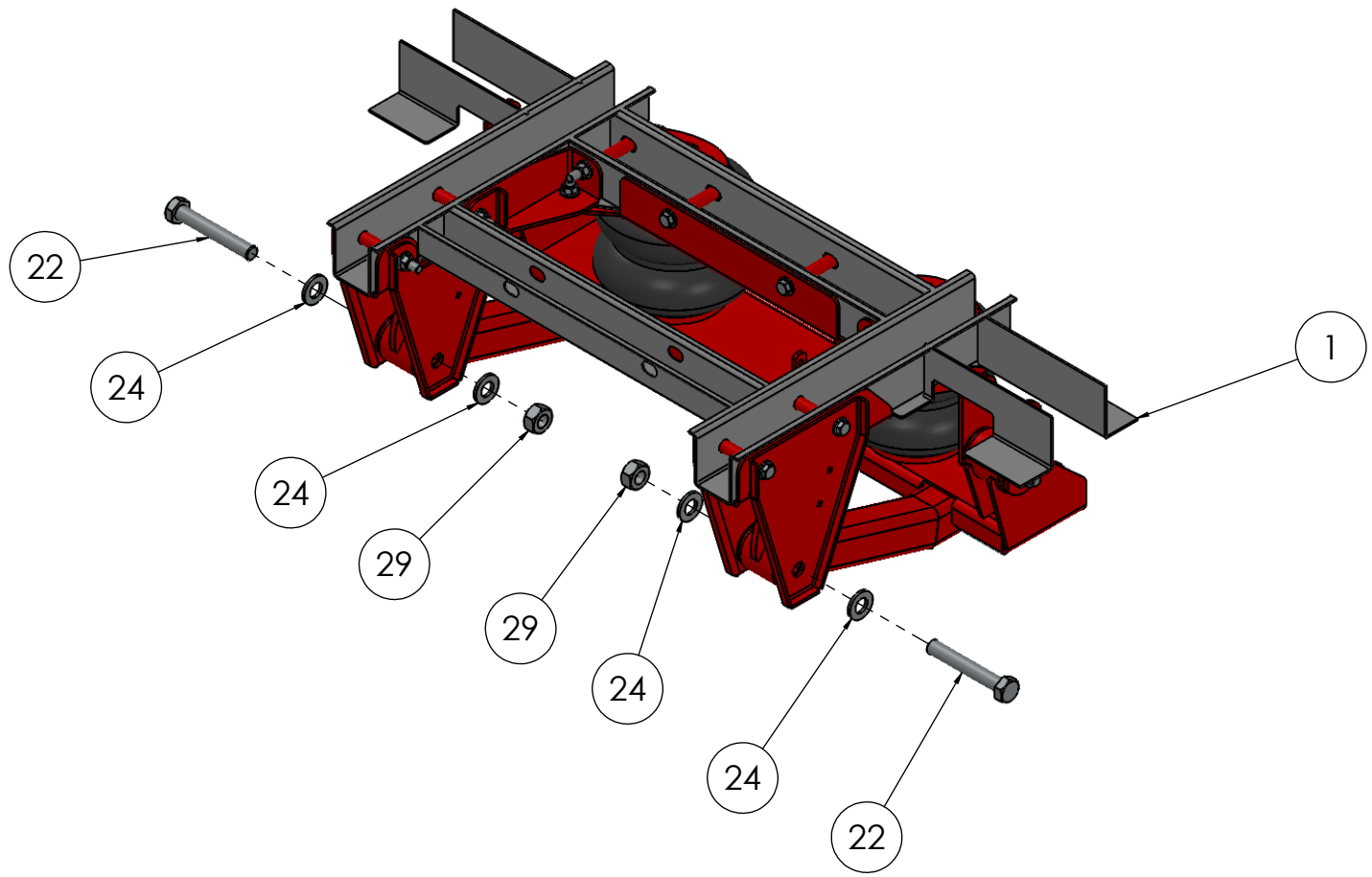
Original Mercedes Shackle Nut

Kelderman
 PROPRIETARY AND CONFIDENTIAL
 THE INFORMATION CONTAINED IN THIS DRAWING IS THE SOLE PROPERTY OF KELDERMAN MFG. INC. ANY REPRODUCTION IN PART OR AS A WHOLE WITHOUT THE WRITTEN PERMISSION OF KELDERMAN MFG. INC. IS PROHIBITED.

UNLESS OTHERWISE SPECIFIED:
 DIMENSIONS ARE IN INCHES
 TOLERANCES:
 FRACTIONAL $\pm 1/32"$
 ANGULAR: MACH ± 1 BEND ± 1
 TWO PLACE DECIMAL $\pm .030$
 THREE PLACE DECIMAL $\pm .010$
 MATERIAL
 FINISH
 WEIGHT **203.48**

DESIGN BY TJA
 CHECKED
 NEW DXF
 QTY:

Tuesday, March 25, 2014 3:28:40 PM
 Project: 2014 Mercedes-Benz Sprinter Van, 3500
 TITLE: Kit - Final Assembly - 2-Bag Rear
 SIZE DWG. NO. **A** 20800
 SCALE: 1:20 DO NOT SCALE DRAWING SHEET 8 OF 9



Kelderman
 PROPRIETARY AND CONFIDENTIAL
 THE INFORMATION CONTAINED IN THIS DRAWING IS THE SOLE PROPERTY OF KELDERMAN MFG. INC. ANY REPRODUCTION IN PART OR AS A WHOLE WITHOUT THE WRITTEN PERMISSION OF KELDERMAN MFG. INC. IS PROHIBITED.

UNLESS OTHERWISE SPECIFIED:
 DIMENSIONS ARE IN INCHES
 TOLERANCES:
 FRACTIONAL $\pm 1/32"$
 ANGULAR: MACH ± 1 BEND ± 1
 TWO PLACE DECIMAL $\pm .030$
 THREE PLACE DECIMAL $\pm .010$

MATERIAL
 FINISH
 WEIGHT **203.48**

DESIGN BY	TJA
CHECKED	
NEW DXF	
QTY:	



Tuesday, March 25, 2014 3:28:40 PM

Project: 2014 Mercedes-Benz Sprinter Van, 3500

TITLE: Kit - Final Assembly - 2-Bag Rear

SIZE	DWG. NO.
A	20800

SCALE: 1:20 DO NOT SCALE DRAWING SHEET 9 OF 9