



A 13/64 drill bit
and 1/4-20 tap
is required.

7/8" drill bit is
required

kelderman®

2686 Highway 92 - Oskaloosa, IA 52577
phone: 641.673.0468 - fax: 641.673.4168
www.kelderman.com

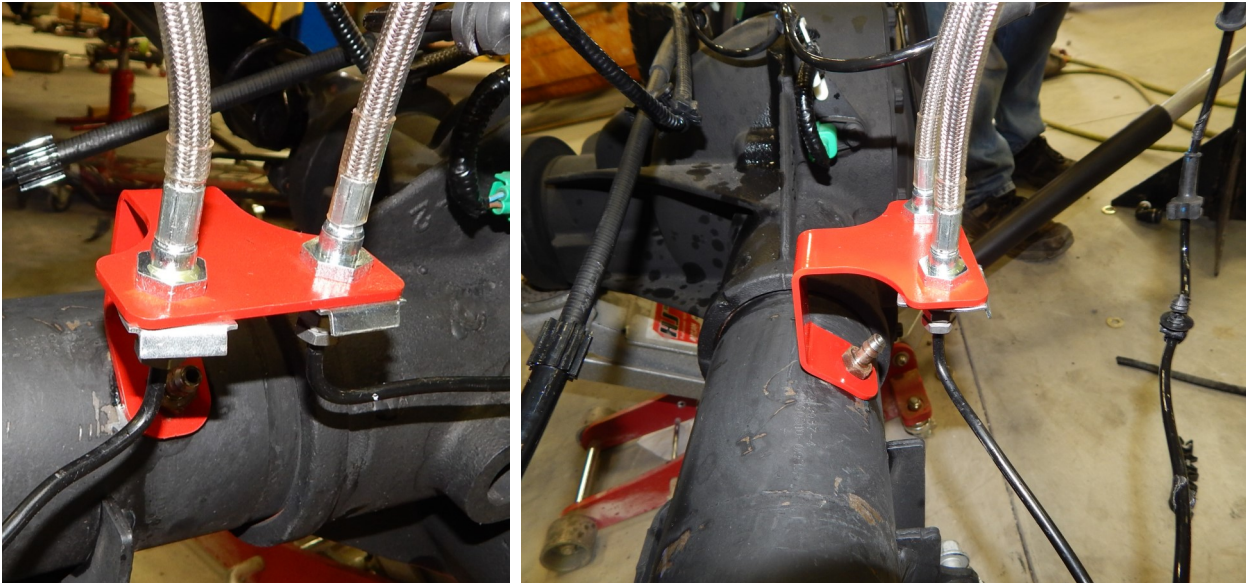
2017+ Ford F-250/350 4X4
Rear 10-12" Lift Kit
Installation Instructions



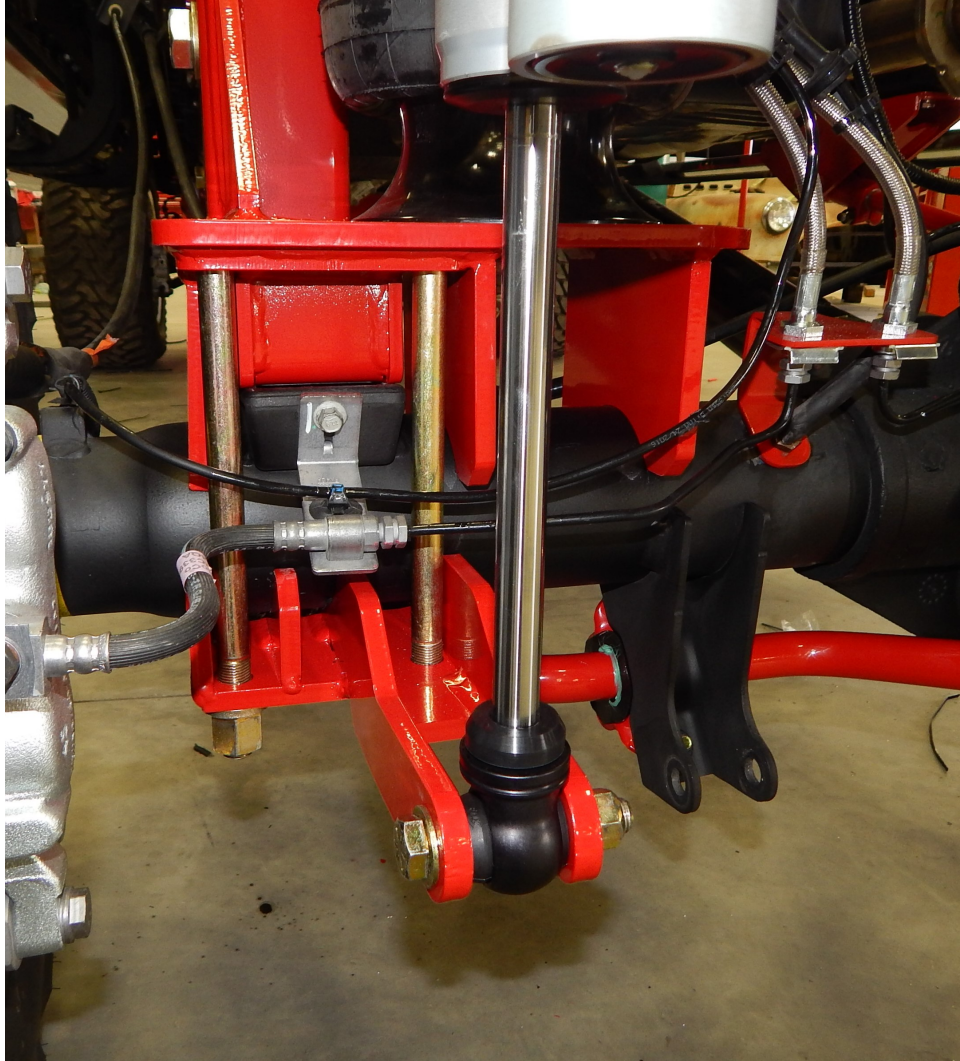
1. Before you remove anything off the truck, measure the pinion angle on the bottom of the differential. Make sure to record the measurement here _____. Once the kit is installed, it is required to put the axle back to this measurement. This will keep the correct pinion angle and should keep shutter upon take off and driveline vibration to a minimum.

2. Raise the truck, enough to remove the leaf springs. Remove the bolts that hold the front of the leaf spring and rear shackle in place. The leaf springs and the shackles will not be reused. Remove the rear shocks .They will not be reused. On the drivers side forward bolt, you will have to drop the fuel tank a couple inches and move it inward to get the bolt out.

3. Locate the supplied brake lines and the brake line mounting bracket (part# XXXX). Install the mount on the axle and then install the brake lines. Make sure to bleed the brakes before the initial test drive.

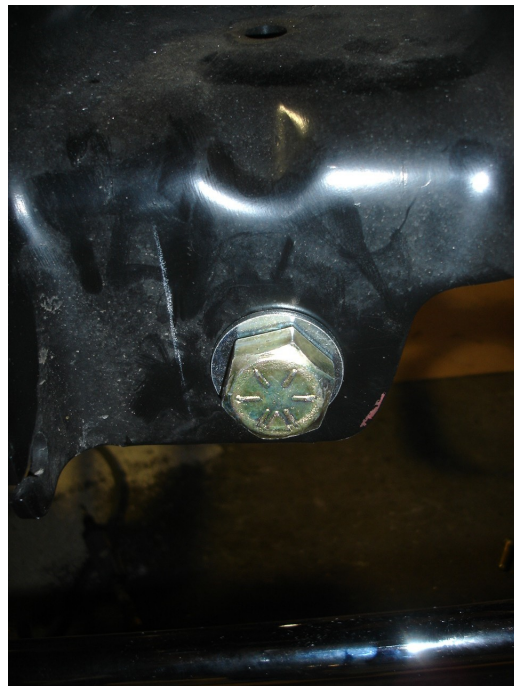


4. Locate the lower airbag mounting brackets (part #xxxx PS and part #xxxxx DS) Fasten them in place with the lower axle clamps (part #xxxxx PS and part #xxxxxDS) and the 5/8" x 9" bolts. Make sure the bolts go from the top down. Use the extended nuts and thick washers. Torque to 150 lb./ft. The shock mounts on the lower axle clamps must be mounted towards the inside of the frame.



Route the emergency brake cable around the front tube on the passenger side lower bag mount

5. Before installing the upper trailing arm, the factory hole in the forward leaf spring perch will need to be drilled out to 7/8". Locate the upper trailing arms (part# XXXX) and the provided spacer bushing (part# XXXX). The spacer will go on the outside of the trailing arm knuckle away from the frame. Adjust the distance between the knuckles to 17 1/2". The bars will install into the top hole on the lower air bag mount with the 7/8x5" bolts. The opposite end goes into the forward leaf spring perch with the 7/8x5 1/2" bolt,



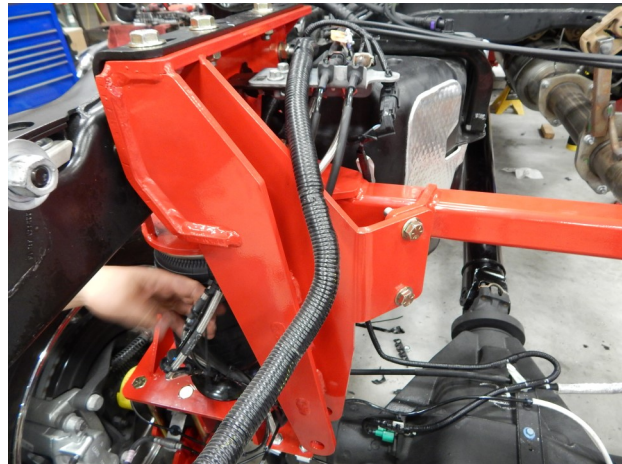
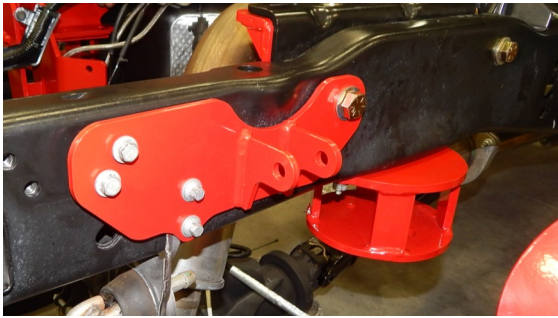
6. Locate the lower trailing arms (part # xxxx) and the lower trailing arm mounts (part# xxxx). Adjust the distance between the knuckles to 30 3/8". The rear portion of the lower trailing arm mounts will bolt to the bottom of the frame with the two 1/2x1 1/2" bolts, and the front portion will weld to the frame. The rear holes in the bottom of the frame must be drilled. The side with the 1/4" threaded holes go on the outside to attach the Kelderman logo plate.

The rear of the mount will be about 1/8-1/4" away from the edge of the frame

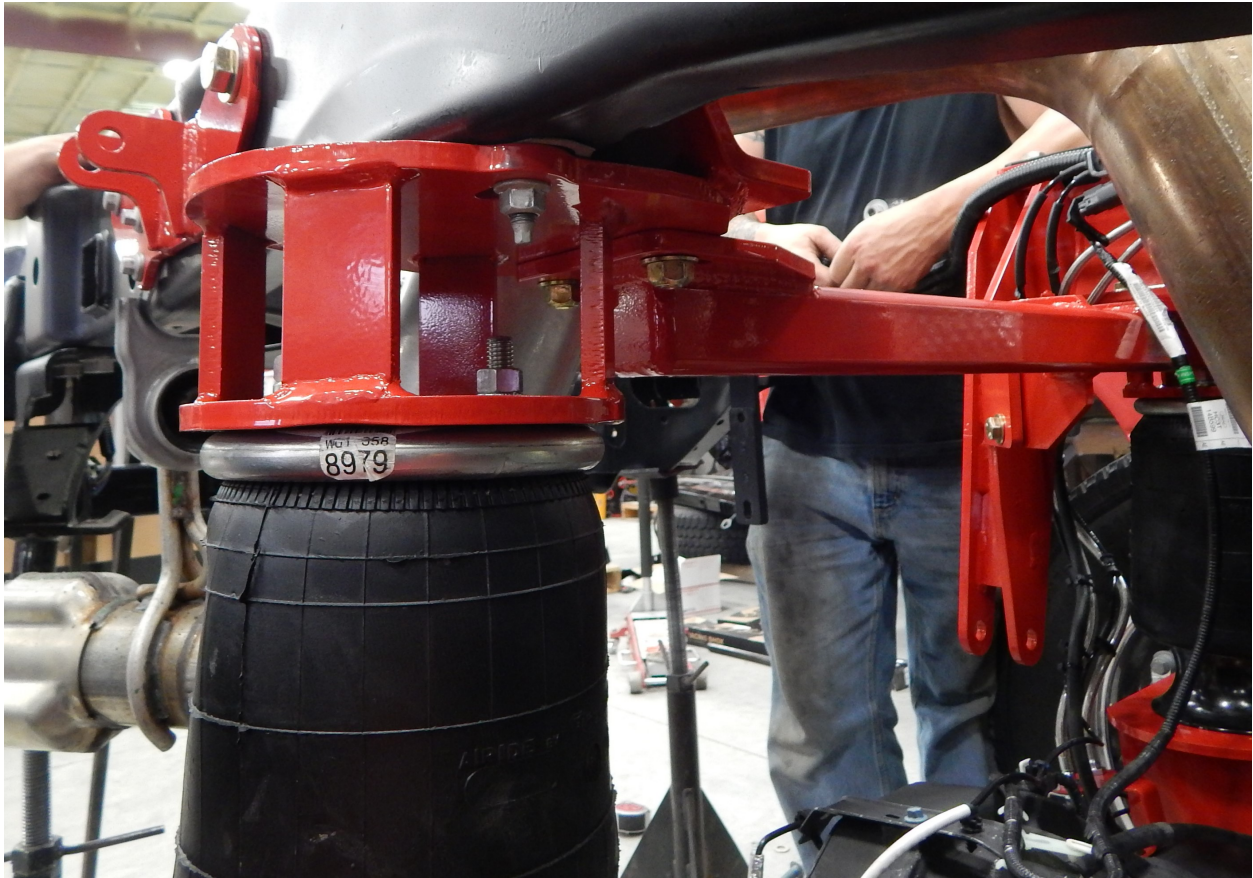


Weld the front of the bracket to the frame and wrap the corners 1/2" back

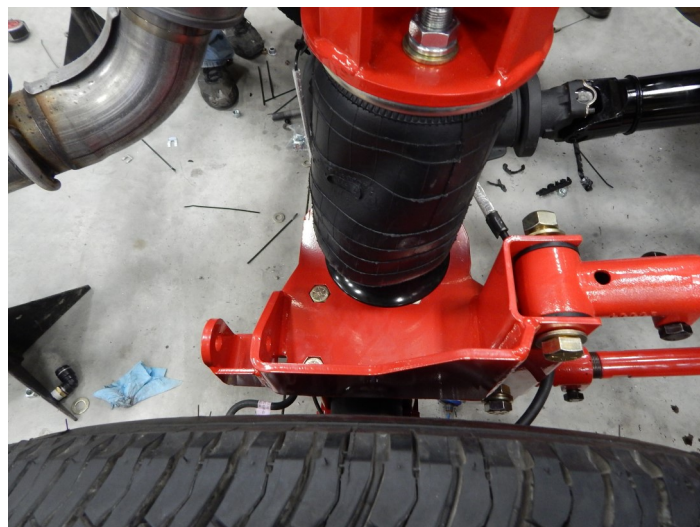
7. Locate the upper air bag mounts (part# xxxz DS and xxxxx PS), crossmember (part# xxxx) and upper shock mounts (part# xxxx DS and xxxx PS) Remove the bump stops from the bottom of the frame. Re-use these bolts and nuts to bolt the upper air bag mounts to the bottom of the frame. Fasten the top of the drivers side bracket to the factory hitch mount with the three 5/8x4 1/2" bolts and two 5/8x4 1/2" bolts. The shock mount needs to be on the outside of the frame when installing the 5/8x 4 1/2" bolt. The passenger side fastens to the side of the frame with two 5/8x4 1/2" bolts, and two 5/8x2" bolts in the hitch mount. The shock mount also shares the 5/8x4 1/2" bolt. To attach the passenger side shock mount, you will need to remove the factory exhaust hanger and cut off the outer bracket that bolts to the frame. Use the factory bolts that held the exhaust hanger in place to fasten the shock mount. The crossmember fastens the two sides together with (6) 1/2x1 1/2" bolts.



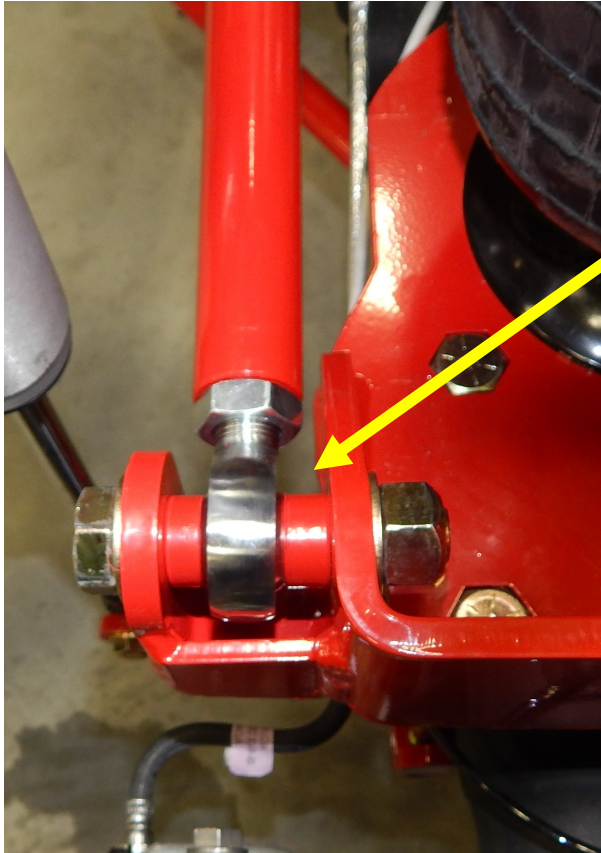
8. Locate the 8979 air bag. The air bag fastens to the upper air bag mounts with the 1/2" and 3/4" nuts and lock washers. Torque these nuts to 35 ft./lbs. Once the 3/4" nuts are installed, insert the air fitting. Once the fitting is in 'hand tight', turn it one more turn with a wrench. Fasten the bottom of the air bag to the lower air bag mount with the 1/2x4 1/2" bolt. Torque this bolt to 35 ft./lbs.



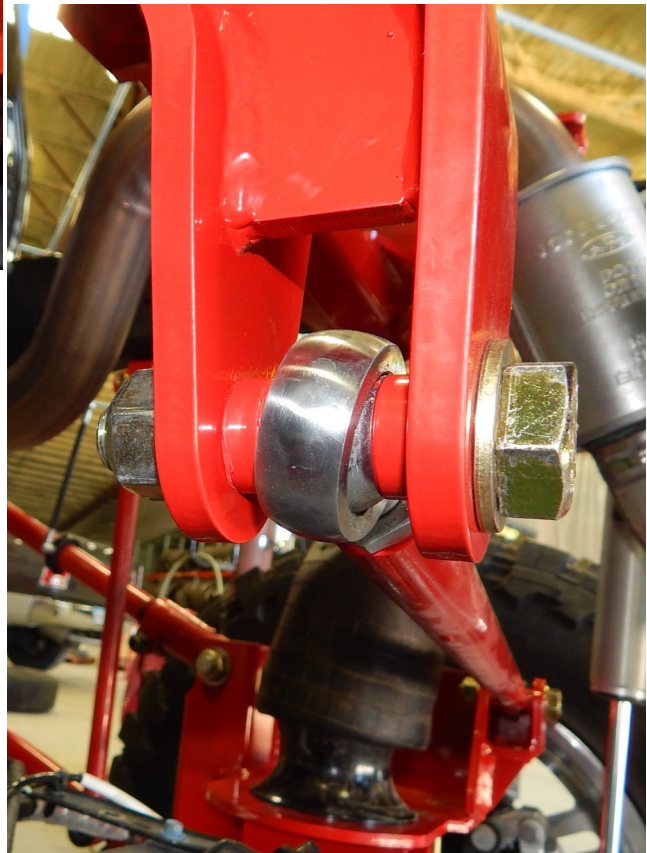
Passenger side pictured below



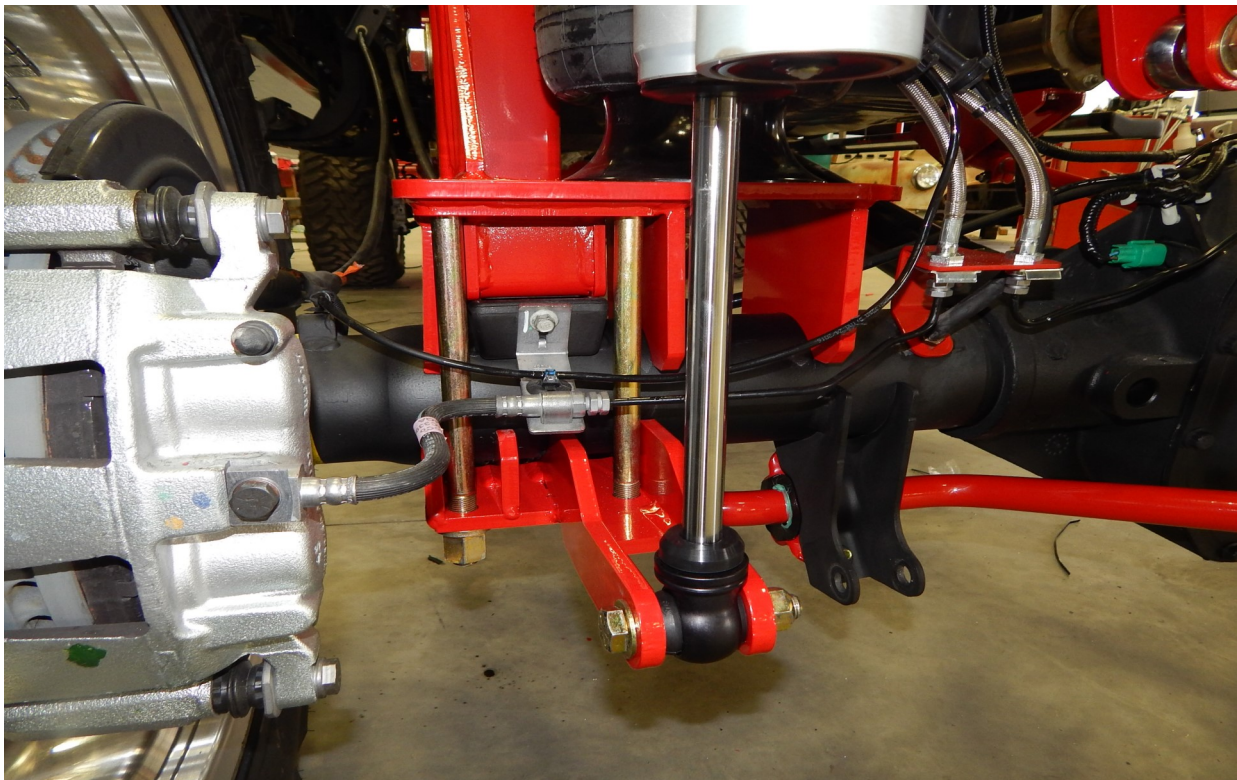
9. Locate the track bar (part# XXXX) and the spacers. Fasten the track bar into the passenger side lower air bag mount with the 3/4x3 1/2" bolts. Use a spacer on each side to center up the heim end. The other end of the track bar fastens into the pan hard bar drop on the drivers side upper air bag mount with a 3/4x 3 1/2" bolt. Use the spacers to center up the heim. Set the center to center measurement 34 1/4" and torque the 3/4" bolts to 200 ft./lbs.



Shown with machined panhard bar spacers



10. Locate the shocks. They mount in the upper shock mount with the 1/2x 3" bolt and into the lower axle clamp with the 1/2x 3" bolts. The upper shock mount may need a washer or supplied spacers. Torque the 1/2" bolts to 85 ft./lbs.



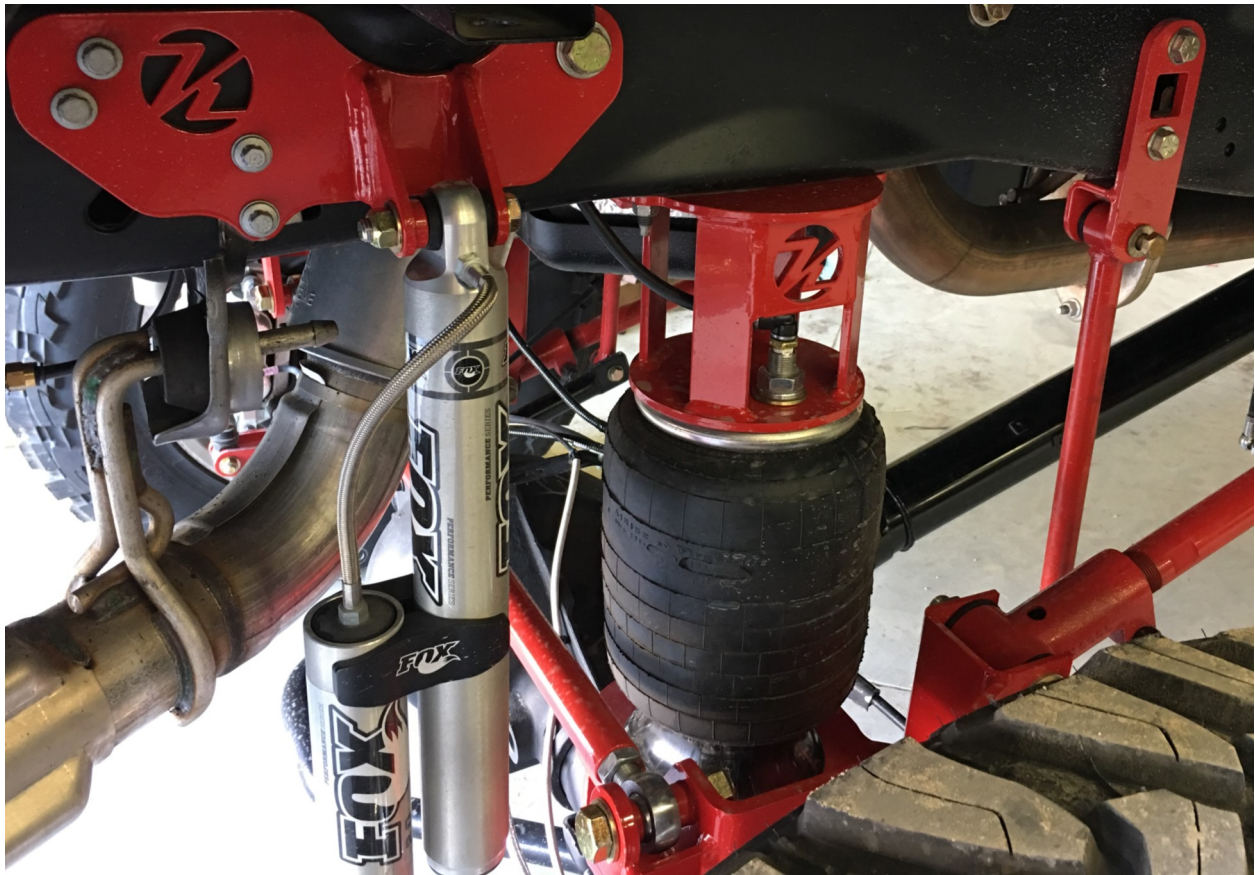
11. Locate the upper sway bar end link mounts (part# xxxx DS and XXX PS) and sway bar (part# xxxx). These mount to the frame with factory hardware or if the truck didn't have a factory sway bar use the supplied 1/2x 1 1/2" bolts. Torque these bolts to 85ft./lbs. Locate the 21" end links. They fasten to the upper end link mount with the 1/2x 3" bolts and to the sway bar with the 1/2x 3" bolts. Use the factory clamp to fasten to the sway bar and use the new poly bushing for the larger diameter sway bar. Torque the 1/2" bolts to 85 ft/lbs. Make sure the large washer on the bottom end link goes against the poly bushing.



Make sure thick washer goes against poly bushing on end link



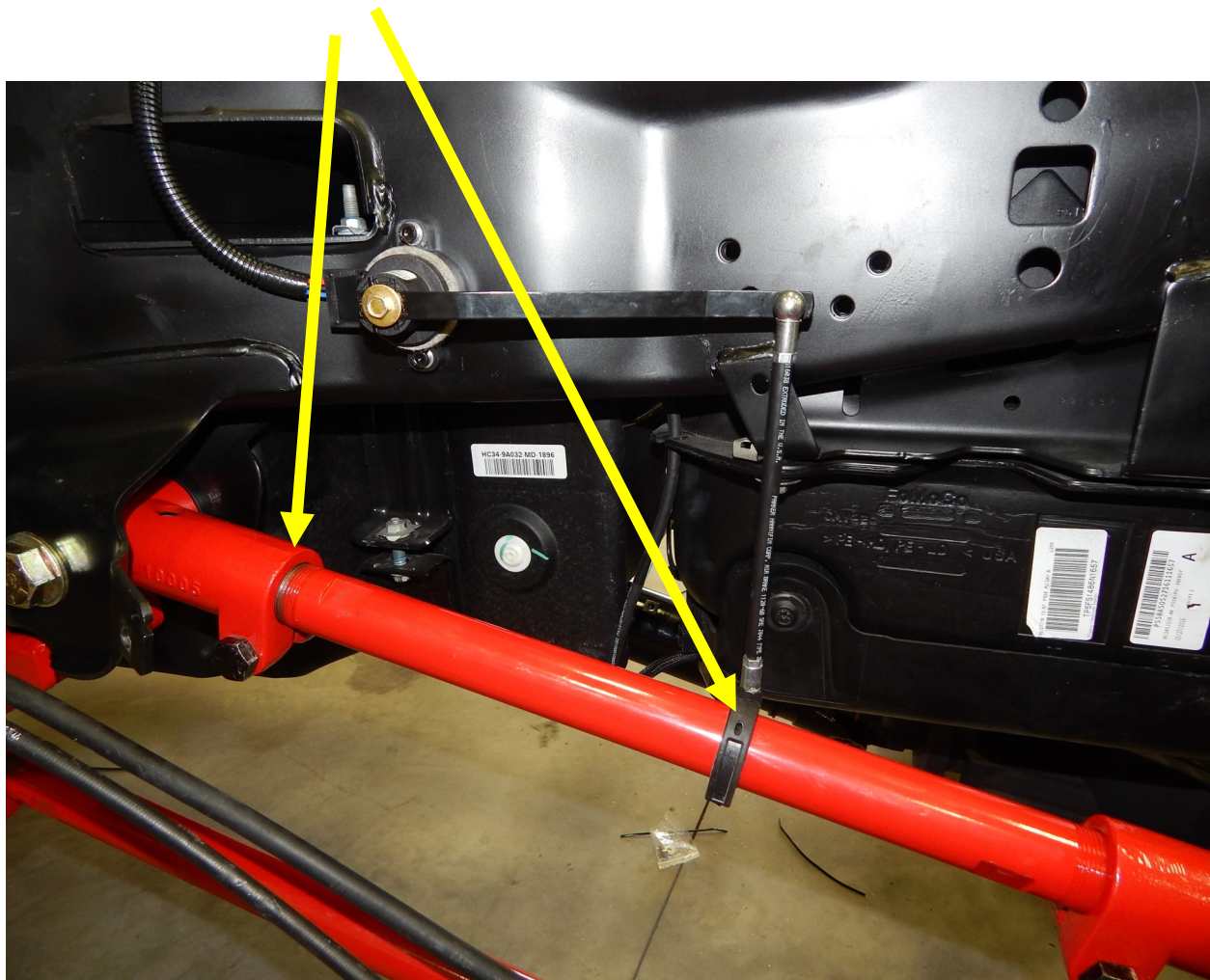
12. With the install is nearly complete, inflate the air bags set to 12" (measure between the upper and lower air bag mounts) and the upper trailing arm set at 17 1/2" between the knuckles and the lower trailing arms set at 30 3/8" between the knuckles, and the track bar set at 34 1/4" center to center,



13.) Locate the (optional) Hadley sensor and mount it to the frame just behind the rectangle opening as shown in the picture below. Drill the holes in the frame with a 13/64" hole and thread the holes to 1/4-20" with a tap. Mount the sensor to the frame. Place the collar on the top bar 10" from the front knuckle. This should set the linkage straight up and down.

14.) Hook the linkage up to the sensor and collar. The linkage should be at 8 3/8" center to center. There is a lock pin that needs to be removed when installing or removing the linkage from the balls on the collar and sensor.

Set collar at 10"



15.) Locate brake line extension bracket (Part # XXXX). It fastens to the original parking brake location. Remove the lower cable from the factory mount and install the provided relocation bracket. Use the supplied 3/8" x 1" bolt to fasten the relocation bracket to the original factory mount. Shown below.

