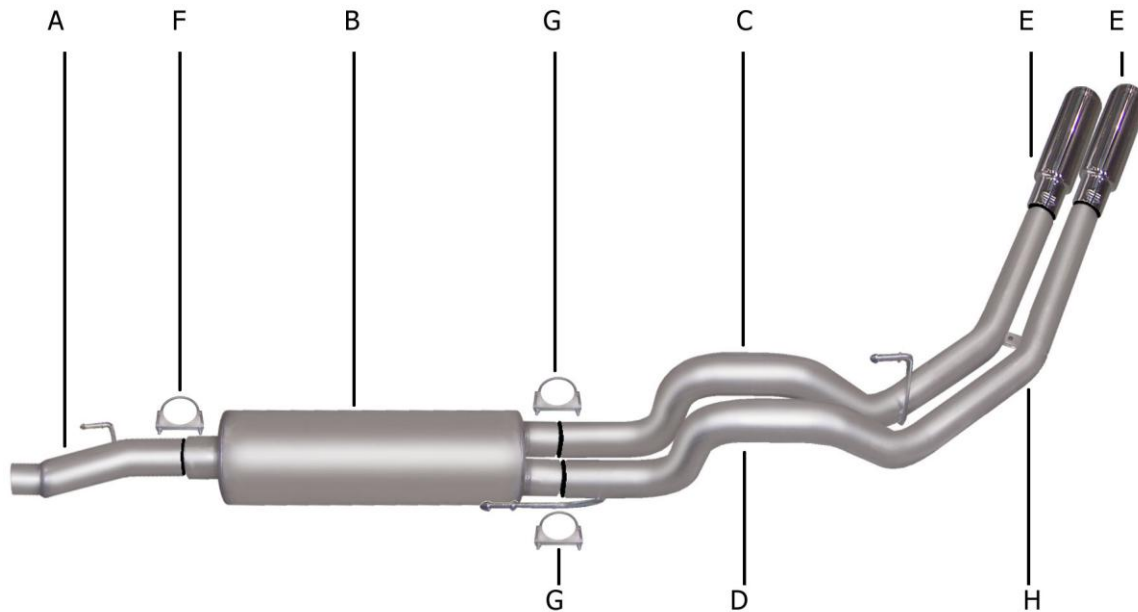




INSTRUCTION MANUAL
CAT-BACK DUAL STAINLESS SPORT EXHAUST
FORD F150 SVT RAPTOR 5.4L TRUCK 4WD
SUPERCAB, SHORT BED
PART # 69120



ITEM	PART#	QUANTITY	DESCRIPTION
A	1297-701065S	1	3" STAINLESS HEADPIPE
B	789800S	1	SUPERFLOW STAINLESS MUFFLER
C	1397-701133S	1	2.5" STAINLESS PASSENGER SIDE TAILPIPE
D	1396-701134S	1	2.5" STAINLESS DRIVER SIDE TAILPIPE
E	500374	2	3.5" STAINLESS TIPS
F	OHD300	1	3" CLAMP
G	5757	2	2.5" CLAMP
H	BO-906	1	BOLT KIT FOR TAILPIPES

EXHAUST INSTALLATION #69120

When installing this exhaust system make sure to use proper safety precautions. Use jack stands when working under the vehicle, set parking brake, block tires and use safety glasses and gloves. Allow exhaust to cool before attempting installation. Severe injury or burns could occur if safety measures are not taken.

SUGGESTED TOOLS:

HACKSAW, JACKSTAND, 1/2" WRENCH & SOCKET, 9/16" SOCKET & WRENCH, WD-40, MEASURING TAPE



TO REMOVE YOUR STOCK EXHAUST, REMOVE IT FROM THE CLAMP LOCATED JUST IN FRONT OF THE MUFFLER REMOVE HANGERS FROM RUBBER GROMMETS BY PULLING EXHAUST TOWARDS THE REAR OF THE VEHICLE, USE WD-40 TO AID IN REMOVAL, LEAVE GROMMETS IN PLACE.



INSTALL DRIVERS SIDE TAILPIPE # D INTO MUFFLER 1 1/2" TO 2". INSERT HANGERS INTO RUBBER GROMMETS, USE CLAMP # G TO SECURE PIPE TO MUFFLER. DO NOT TIGHTEN. THE TAB ON THIS PIPE SHOULD GO ON BOTTOM OF PASSENGER SIDE PIPE USE BOLT KIT # H TO SECURE TOGETHER.



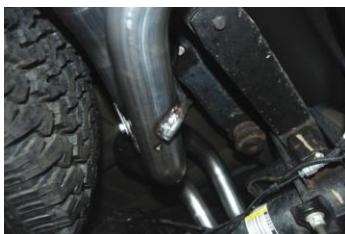
INSTALL HEADPIPE # A INTO STOCK PIPE. THE END OF THE PIPE SHOULD BE AT THE 12 O'CLOCK POSITION, ATTACH WITH FACTORY CLAMP. DO NOT TIGHTEN. INSERT WELDED HANGER INTO RUBBER GROMMET.



INSTALL MUFFLER # B ONTO HEADPIPE 1 1/2" TO 2". USE CLAMP # F TO SECURE MUFFLER TO HEADPIPE. DO NOT TIGHTEN. USE A JACK STAND TO HOLD UP THE MUFFLER. OUTLETS SHOULD BE LEVEL.



Install stainless steel tips. Clamp down. When you have everything in place, firmly tighten all bolts and clamps down securely. Use stainless steel cleaner and a Scotch Brite pad weekly to prevent tip from discoloration.



INSTALL PASS. SIDE TAILPIPE # C INTO MUFFLER 1 1/2" TO 2". INSERT HANGER INTO RUBBER GROMMET, USE CLAMP # G TO SECURE PIPE TO MUFFLER. DO NOT TIGHTEN.

Inspect all fasteners after 25-50 miles of operation and re-tighten as necessary