



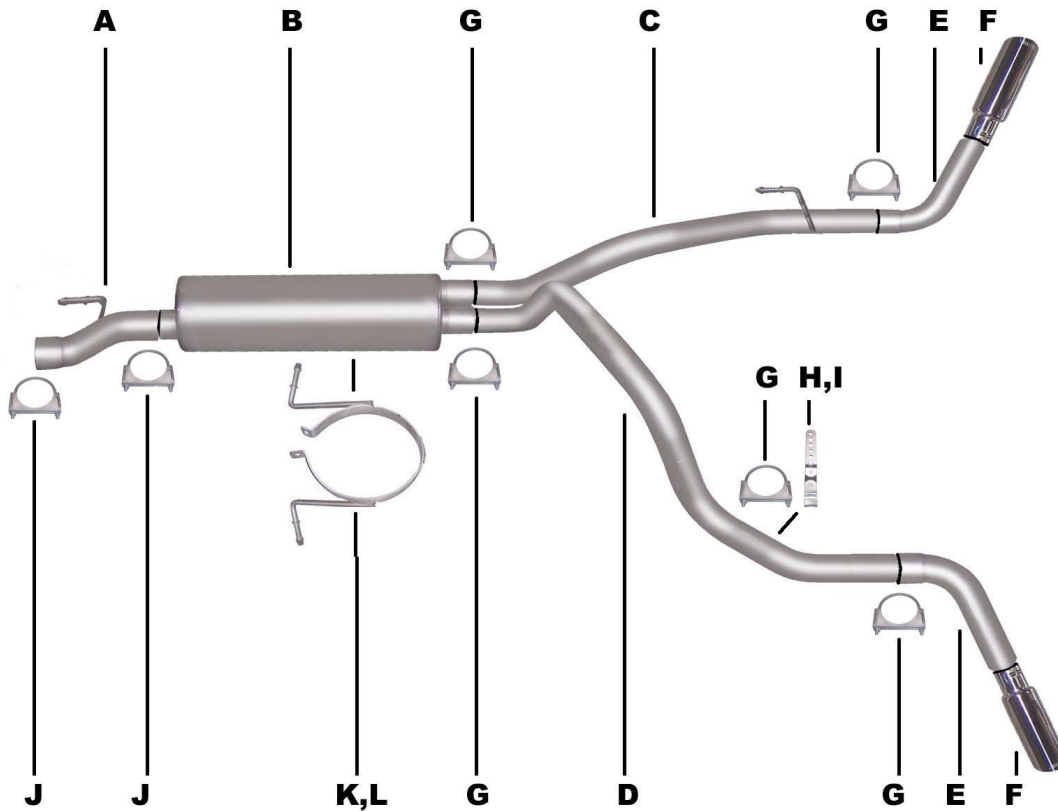
PERFORMANCE EXHAUST SYSTEMS

INSTALLATION INSTRUCTIONS

CAT BACK STAINLESS EXTREME DUAL EXHAUST

DODGE RAM 5.7L 2/4WD 4DR MEGA CAB, SHORT BED 2500
DODGE RAM 5.7L 2/4WD 4DR QUAD CAB, SHORT BED 2500/3500

PART #66555



ITEM	PART #	QUANTITY	DESCRIPTION
A	1076-700814S	1	3" Stainless Headpipe
B	789800S	1	Stainless Superflow muffler
C	1077-700815S	1	2½" Stainless Passenger side tailpipe
D	1078-700816S	1	2½" Stainless Driver side tailpipe
E	552-700413S	2	2½" Stainless Exit pipe
F	500374	2	3½" Stainless tips
G	5757	5	2½" clamp
H	08269	1	10" Hanger
I	BO-101	1	Bolt kit for 10" hanger
J	OHD300	2	3" Clamp
K	4343	1	7" Band clamp
L	BO-1015	1	Bolt kit for band clamp

Thank you for purchasing our Gibson exhaust system for your vehicle. If you need further assistance, please do not hesitate to call our technical dept at (800) 528-3044 Monday through Friday, 8:00 am to 5:00 pm.

CAREFULLY READ INSTRUCTIONS BEFORE STARTING INSTALLATION.

When installing this exhaust system make sure to use proper safety precautions. Use jack stands when working under the vehicle, set parking brake, block tires and use safety glasses and gloves. Allow exhaust to cool before attempting installation. Severe injury or burns could occur if safety measures are not taken.

SUGGESTED TOOLS: 1/2", 9/16" 15mm wrenches & sockets, WD-40, hacksaw, jack stands.

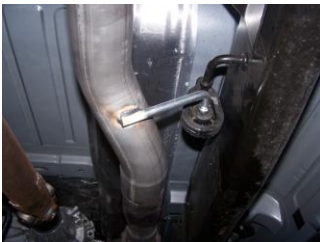
.....
• **Disconnect the negative battery cable before removal of OEM exhaust. This will allow the computer to reset and recognize the new exhaust. Lay out the exhaust on the floor so it looks like the drawing and compare parts with manual.**
.....



1. To remove the stock exhaust remove it from in front of the stock muffler. **DO NOT REMOVE STOCK HEADPIPE.** Disengage the welded hangers using WD-40 from the OEM rubber grommets. Do not damage or remove the rubber grommets as you will re-use them to mount your new system.



6. Measure 19½" from the rear of the frame. Use the third hole from the top to attach 10" hanger #H with bolt kit #I. **DO NOT TIGHTEN.**



2. Install head pipe #A onto your existing stock front pipe and attach with clamp #J. Use a jack stand to support the converter. Insert welded hanger into rubber grommet.



7. Install the driver overaxle tailpipe #D into the muffler 1½"-2". Use clamp #G to secure. Use another clamp #G to hold pipe up to hanger. **DO NOT TIGHTEN.**



3. Install muffler #B onto head pipe 1½"-2" with the louvers facing towards the converter. Use a jack stand to support the muffler. Use clamp #J to secure the muffler to the headpipe. **DO NOT TIGHTEN.**



8. Install exit pipes #E onto tailpipe and secure with clamp #H. **DO NOT TIGHTEN.**



4. Slide band clamp #K onto muffler and attach with bolt kit #L. **DO NOT TIGHTEN.** Insert hangers into rubber grommets.



9. Install stainless steel tips #F. Clamp down. When you have everything in place, firmly tighten all bolts and clamps down securely. Use stainless steel cleaner and a Scotch Brite pad weekly to prevent tip from discoloration.



5. Install the passenger side overaxle tailpipe #C into the muffler 1½"-2". Use clamp #G to secure tailpipe to muffler. **DO NOT TIGHTEN.** Insert welded hanger into rubber grommet.

GIBSON EXHAUST systems are designed on a factory stock vehicle. Any aftermarket products installed could increase the sound levels of this Exhaust. **Make sure there is a 1" clearance from ALL rubber brake lines, shock boots, fuel lines, tires, etc to prevent heat related damage or fire.**