



INSTRUCTION MANUAL

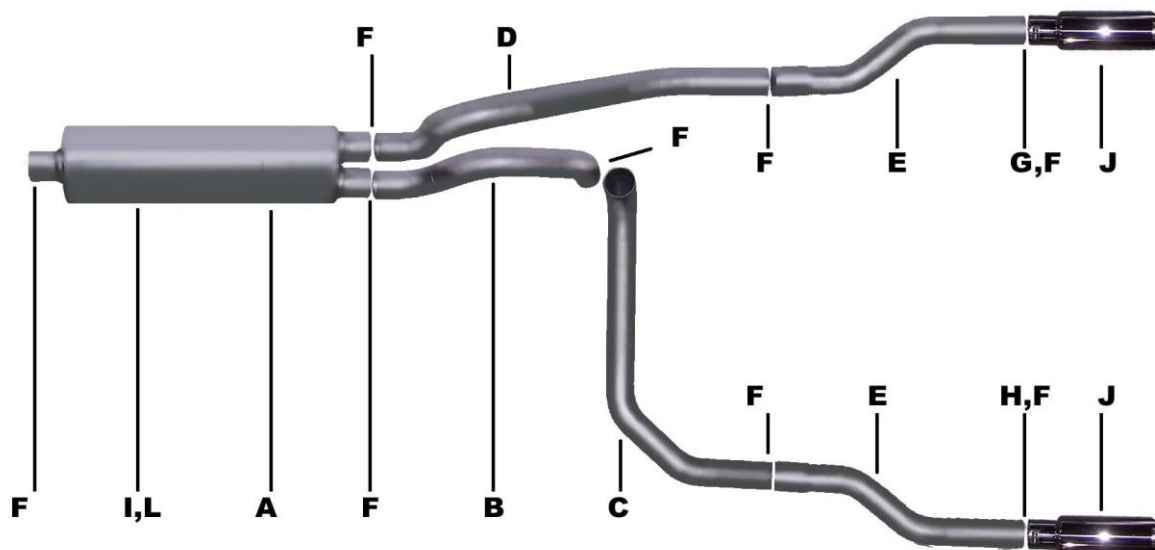
CAT-BACK STAINLESS SPLIT EXHAUST

DODGE DAKOTA TRUCK 3.9L- 5.2L- 5.9L 2/4WD

DODGE DAKOTA TRUCK 5.9L RT 2WD

EXTENDED CAB, SHORT BED

PART # 66505



ITEM	PART #	QTY	DESCRIPTION
A	789800S-3	1	STAINLESS SUPERFLOW DUAL OUTLET MUFFLER
B	263-700005S-A	1	2-1/2" STAINLESS FRONT DRIVERSIDE TAILPIPE
C	264-700005S-B	1	2-1/2" STAINLESS DRIVERSIDE OVERAXLE PIPE
D	265-700010S	1	2-1/2" STAINLESS PSGR.SIDE OVERAXLE PIPE
E	266-6528S-4	2	2.5" STAINLESS EXIT PIPE
F	5757	8	2-1/2" CLAMP
G	800005	1	O.E. HANGER
H	800006	2	O.E. STRAP HANGER
I	4150	1	BAND CLAMP
J	500374	2	3-1/2"STAINLESS TIPS
K	ZIP	2	ZIP TIES
L	BO-1015	1	BAND CLAMP BOLT KIT

MUST REMOVE SPARE TIRE IF LARGER THAN 16"
WILL NOT FIT WITH HEAVY DUTY SUSPENSION

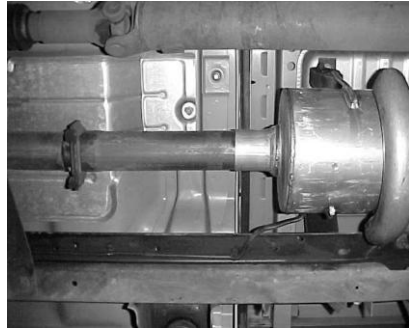
Thank you for purchasing our GIBSON EXHAUST SYSTEM for your vehicle. If you need further assistance, please do not hesitate to call our Technical Department at (800) 528-3044, Monday through Friday, 8:00 am to 5:00 pm.

EXHAUST INSTALLATION KIT#66505

WHEN INSTALLING THIS EXHAUST SYSTEM MAKE SURE TO USE ALL THE PROPER SAFETY PRECAUTIONS. USE JACK STANDS WHEN UNDER TRUCK, SET PARKING BRAKE, BLOCK TIRES AND USE SAFETY GLASSES AND GLOVES. DO NOT WORK WITH HOT PIPES!

SUGGESTED TOOLS:

15mm Wrench, 9/16 Socket, ½ Wrench, Jack Stand, Hacksaw



CUT 8" IN FRONT OF YOUR STOCK MUFFLER LEAVE ALL OF YOUR FACTORY RUBBER GROMMETS IN PLACE. USE WD-40 TO AID YOU IN REMOVING THE FACTORY HANGERS FROM GROMMETS. YOU CAN CUT THE TAILPIPE RIGHT BEHIND THE MUFFLER.



NEXT, INSTALL HANGER # G TO THE PASSENGER SIDE OF MUFFLER OUTLET WITH VERTICAL BAR OF THE HANGER TOWARDS PASSENGER SIDE INSTALL PASSENGER SIDE OVERAXLE PIPE # D INTO MUFFLER AT LEAST 1 ½" TO 2". AND USE CLAMP # F TO ATTACH.. DO NOT TIGHTEN



UNBOLT AND REMOVE STOCK REAR HANGER ON THE PASSENGER SIDE FRAME RAIL. INSTALL HANGERS # H TO THE BOTTOM OF FRAME RAIL IN EXISTING HOLE APPROX. 22.5" FROM THE REAR OF THE FRAME, USE NUT AND BOLT THAT ARE SUPPLIED. REPEAT THIS SAME PROCEDURE ON DRIVERS SIDE. HANGER # H WILL AIM TOWARDS THE REAR OF THE VEHICLE.



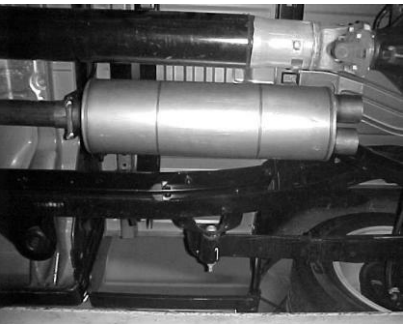
INSTALL DRIVERSIDE FRONT TAILPIPE #B INTO MUFFLER AT LEAST 1 ½" TO 2". USING CLAMP # F. NEXT INSTALL DRIVERSIDE OVERAXLE PIPE # C TO FRONT TAILPIPE USING CLAMP # F DO NOT TIGHTEN



INSTALL BAND CLAMP #I INTO RUBBER GROMMETS AND INSERT WELDED HANGER. ATTACH WITH BOLT KIT # L.



INSTALL EXIT PIPES # E TO OVERAXLE PIPES USING CLAMP # F TO SECURE THEM. DO NOT TIGHTEN. INSTALL CLAMP # F TO HANGER # H ON BOTH SIDES TO HOLD UP YOUR TAILPIPES. ADJUST PIPES TO THE RIGHT ANGLE AND CUT IF NECESSARY TO LENGTH. IF YOUR VEHICLE HAS A SWAY BAR YOU MAY HAVE TO TRIM THE FACTORY BOLT ON THE PASSENGER SIDE



INSTALL MUFFLER # A WITH THE INLET TOWARDS THE MOTOR. INLET HAS LOUVERS INSIDE FACING TOWARDS THE MOTOR. USE A JACK STAND TO SUPPORT THE MUFFLER. USE CLAMP # F TO SECURE MUFFLER TO THE STOCK HEADPIPE. DO NOT TIGHTEN .



INSTALL STAINLESS TIPS TIGHTEN ALL CLAMPS AND HANGERS STARTING FROM THE MUFFLER BACK.. USE ZIP TIES FOR BRAKE & VENT LINES.

MAKE SURE YOU HAVE A MINIMUM OF AT LEAST 1" OF CLEARANCE FROM ALL BRAKE LINES, SHOCKS, TIRES, ETC. SPARE TIRE MAY NEED TO BE LOOSENED AND PUSHED TO THE REAR OF THE TRUCK FOR BETTER CLEARANCE.