



INSTRUCTION MANUAL

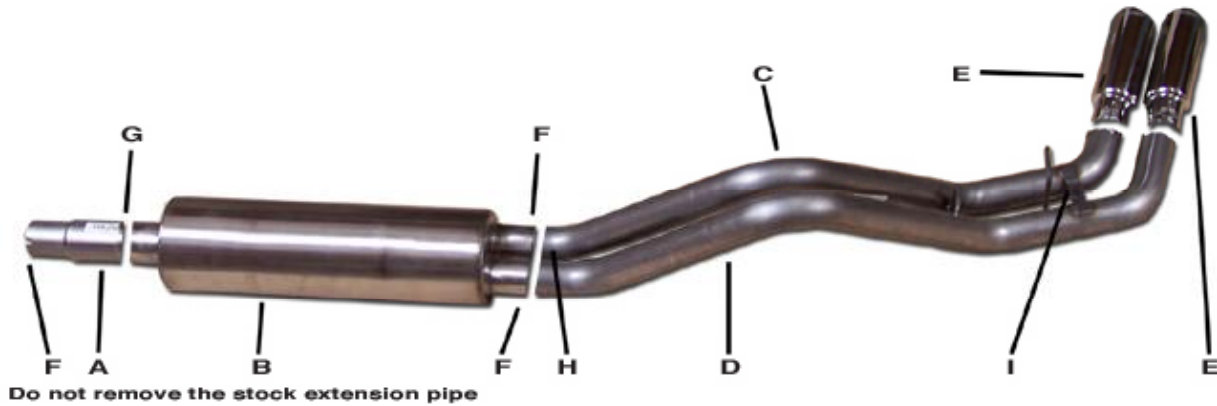
CAT-BACK DUAL SPORT STAINLESS EXHAUST

DODGE RAM TRUCK 3.9L, 5.2L, 5.9L 2/4WD

DODGE RAM TRUCK- OFF ROADSTER

STANDARD CAB, EXTENDED CAB, SHORT BED

PART # 66100



ITEM	PART #	QUANTITY	DESCRIPTION
A	184-2509S1	3"	STAINLESS HEADPIPE
B	789800S	1	SUPERFLOW STAINLESS MUFFLER
C	319-700149S	1	2-1/2" PASS. SIDE OVERAXLE S/S PIPE
D	320-700150S	1	2-1/2" DRIVERSIDE OVERAXLE S/S PIPE
E	500374	2	3-1/2" STAINLESS TIPS
F	5757	3	2-1/2" CLAMP
G	OHD300	1	3" CLAMP
H	40079	1	O.E. REAR TAILPIPE HANGER
I	BO-906	1	BOLT KIT FOR TAILPIPE

Thank you for purchasing our GIBSON EXHAUST SYSTEM for your vehicle. If you need further assistance, please do not hesitate to call our Technical Department at (800) 524-3044, Monday through Friday, 8:00 am to 5:00 pm.

EXHAUST INSTALLATION KIT#66100

WHEN INSTALLING THIS EXHAUST SYSTEM MAKE SURE TO USE ALL THE PROPER SAFETY PRECAUTIONS. USE JACKSTANDS WHEN UNDER THE TRUCK, SET PARKING BRAKE, BLOCK TIRES, AND USE SAFETY GLASSES AND GLOVES.

DO NOT WORK WITH HOT PIPES!

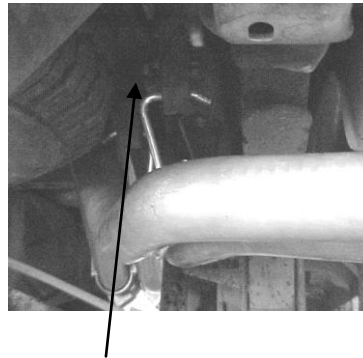
SUGGESTED TOOLS

15MM SOCKET, 9/16" SOCKET, 1/2" SOCKET, 1/2" WRENCH, JACKSTANDS, HACKSAW, WD-40

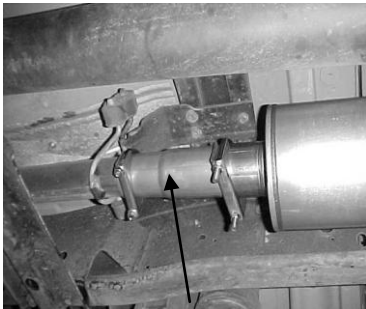
LAY OUT THE GIBSON EXHAUST AND COMPARE PART WITH MANUAL.



DO NOT REMOVE THE STOCK EXTENSION PIPE BETWEEN THE CONVERTER AND MUFFLER. UNCLAMP EXHAUST IN FRONT OF THE STOCK MUFFLER JUST BEFORE THE STOCK RUBBER HANGER. CUT THE STOCK OVERAXLE PIPE JUST AFTER THE MUFFLER WITH A HACKSAW. LEAVE ALL RUBBER GROMMETS ON. APPLY WD-40 TO ALL HANGERS FOR EASIER REMOVAL.

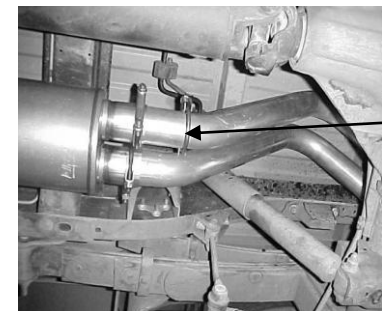


NEXT INSTALL PASSENGER OVERAXLE # C. INSERT WELDED HANGER INTO RUBBER GROMMET. DO NOT TIGHTEN. ATTACH TAILPIPES TO THE MUFFLER USING CLAMPS # F. USE BOLT KIT # I TO ATTACH BOTH OVERAXLE PIPES TOGETHER.



INSTALL HEADPIPE # A USING CLAMP # F AND ATTACH TO THE STOCK EXTENSION PIPE. INSTALL THE MUFFLER USING CLAMP # G. USE JACKSTANDS TO SUPPORT THE MUFFLER. DO NOT TIGHTEN.

THE SPARE TIRE ON SOME VEHICLES MAY NEED TO BE LOOSENED AND PULLED TO THE DRIVERSIDE FOR BETTER CLEARANCE.



INSTALL REAR TAILPIPE HANGER # H ON THE DRIVERSIDE INTO THE RUBBER GROMMET. SLIDE THE DRIVERSIDE OVERAXLE TAILPIPE # D THRU THE HANGER THEN INSERT WELDED HANGER INTO RUBBER GROMMET. ATTACH WITH CLAMP # F TO MUFFLER.



INSTALL THE STAINLESS TIPS. NOW GO BACK AND START AT THE FRONT AND TIGHTEN ALL CLAMPS AND HANGERS.

MAKE SURE YOU HAVE A MINIMUM OF A 1" CLEARANCE FROM ALL SHOCK BOOTS, BRAKE LINES, FUEL LINES, TIRES, ETC...