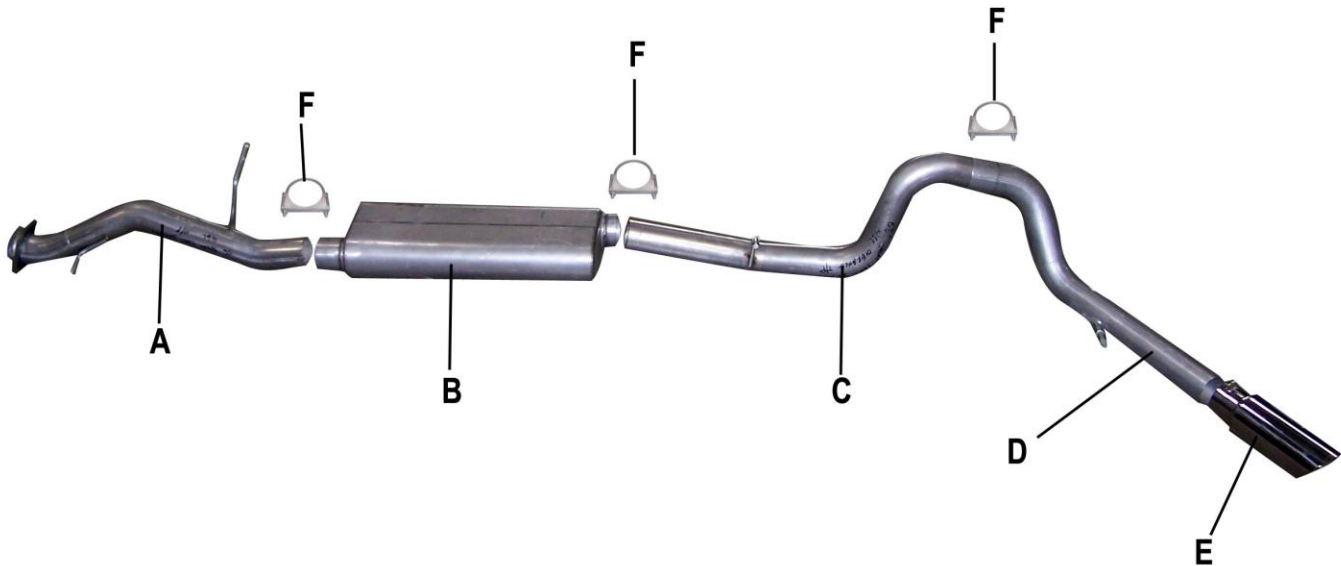




INSTALLATION INSTRUCTIONS
CAT BACK STAINLESS SINGLE EXHAUST
FORD SPORT TRAC 4.6L 2/4WD 4DR
PART #619901



| ITEM | PART # | QUANTITY | DESCRIPTION |
|------|--------------|----------|--|
| A | 1122-700882S | 1 | 3" Stainless Headpipe w/welded hanger and flange |
| B | 11210S | 1 | Stainless Superflow Oval Muffler |
| C | 1123-700883S | 1 | 3" Stainless Overaxle tailpipe w/welded hanger |
| D | 1060-700845S | 1 | 3" Stainless Exit pipe w/welded hanger |
| E | 500360 | 1 | 3½" Stainless tip |
| F | OHD300 | 3 | 3" Clamp |

INSTALLATION INSTRUCTIONS #619901

CAREFULLY READ INSTRUCTIONS BEFORE STARTING INSTALLATION.

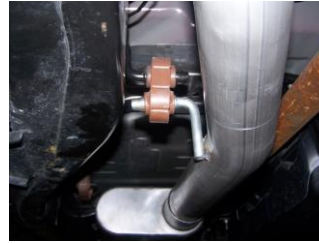
When installing this exhaust system make sure to use proper safety precautions. Use jack stands when working under the vehicle, set parking brake, block tires and use safety glasses and gloves. Allow exhaust to cool before attempting installation. Severe injury or burns could occur if safety measures are not taken.

SUGGESTED TOOLS: 1/2", 9/16" 15mm wrenches & sockets, WD-40, hacksaw, jack stands.

.....
Disconnect the negative battery cable before removal of OEM exhaust. This will allow the computer to reset and recognize the new exhaust. Lay out the exhaust on the floor so it looks like the drawing and compare parts with manual.
.....



1. To remove the stock exhaust, un-bolt it from the 2-bolt flange. Save stock bolts they will be reused. Disengage the welded hangers using WD-40 from the OEM rubber grommets. Do not damage or remove the rubber grommets as you will re-use them to mount your new system. Now, cut off tailpipe and remove.



4. Install overaxle tailpipe #C into the muffler 1½"-2". Insert welded hanger into rubber grommet. Use clamp #F to secure tailpipe to muffler. DO NOT TIGHTEN



2. Install head pipe #A onto your existing stock front pipe and attach using stock bolts. DO NOT TIGHTEN. Insert welded hangers into rubber grommet.



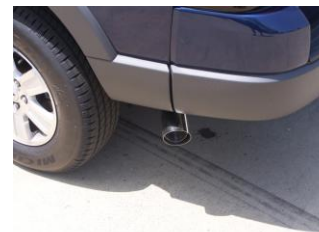
5. Next, install the exit pipe #D. Insert welded hanger into rubber grommet. Use clamp #F to secure to the tailpipe. DO NOT TIGHTEN



3. Install muffler #B onto head pipe 1½"-2" with the louvers facing towards the converter. Use a jack stand to support the muffler. Use clamp #F to secure the muffler to the headpipe. DO NOT TIGHTEN.



6. Install stainless steel tip #E. Clamp down. When you have everything in place, firmly tighten all bolts and clamps down securely. Use stainless steel cleaner and a Scotch Brite pad weekly to prevent tip from discoloration.



GIBSON EXHAUST systems are designed on a factory stock vehicle. Any aftermarket products installed could increase the sound levels of this Exhaust. **Make sure there is a 1" clearance from ALL rubber brake lines, shock boots, fuel lines, tires, etc to prevent heat related damage or fire.**