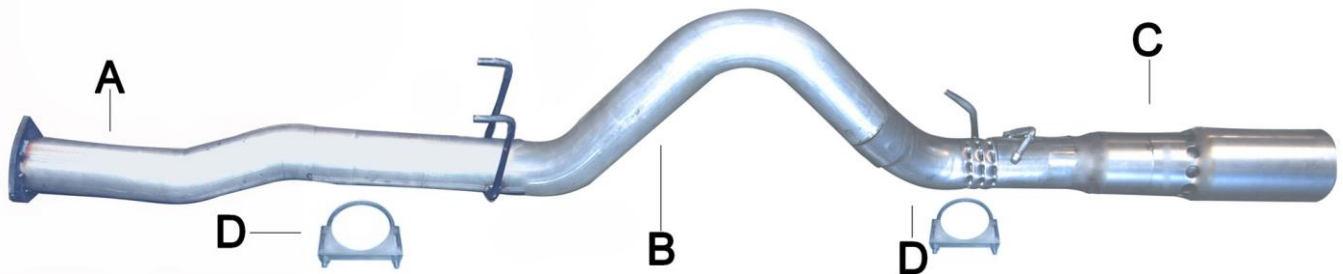




# Installation Instructions

Cat-Back Stainless Single Exhaust  
Ford F250/F350/F450 Super Duty, 6.7L Diesel 2/4wd  
Crew Cab, Long Bed

Part #619697B



ITEM	PART	QUAN TITY	DESCRIPTION
A	1412-701139S	1	4" Stainless Headpipe
B	999700914S	1	4" Stainless Overaxle Tailpipe
C	999700930S	1	4" Stainless Exit Pipe with welded 6" Black Ceramic Tip
D	4171	2	4" CLAMP

# Installation Instructions #619697B

When installing this exhaust system make sure to use proper safety precautions. Use jack stands when working under the vehicle, set parking brake, block tires and use safety glasses and gloves. Allow exhaust to cool before attempting installation. Severe injury or burns could occur if safety measures are not taken.

**SUGGESTED TOOLS:** 1/2", 9/16", 15mm wrenches & sockets, WD-40, hacksaw, jack stands

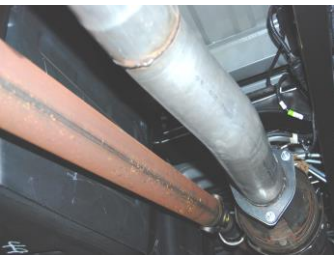
1. Disconnect the negative battery cable before removal of OEM exhaust. This will allow the computer to reset and recognize the new exhaust. Lay out the exhaust on the floor so it looks like the drawing and compare parts with manual.



2. To remove your stock exhaust, remove it from the 3 bolt flange located just behind the converter. **(MAKE SURE TO REMOVE THE EXHAUST SENSOR LOCATED ON THE OVER AXLE PORTION OF YOUR FACTORY EXHAUST YOU WILL NEED A 15/16")**



5. Using the 15/16" wrench reinstall the exhaust sensor on the over axle pipe.



3. Disengage the welded hangers from the OEM rubber grommets. Use WD-40 to aid in the process. Do not damage or remove the rubber grommets as you will re-use them. Now, cut off tailpipe and remove exhaust. You also will re-use your factory nuts.



6. Adjust to fit properly then tighten all clamps and bolts. Use stainless steel cleaner to prevent tip from discoloration, Inspect all fasteners after 25-50 miles & retighten as necessary



4. Install headpipe #A onto your existing stock front pipe Re-using the factory nuts.

5. Install the over axle tailpipe #B onto headpipe 1.5"-2". Use clamp #D to secure. Do not Tighten



GIBSON EXHAUST systems are designed on a factory stock vehicle. Any aftermarket products installed could increase the sound levels of the exhaust. **Make sure there is a 1" clearance from ALL rubber brake lines, shock boots, lines, tires, etc. to prevent heat related damage or fire.**