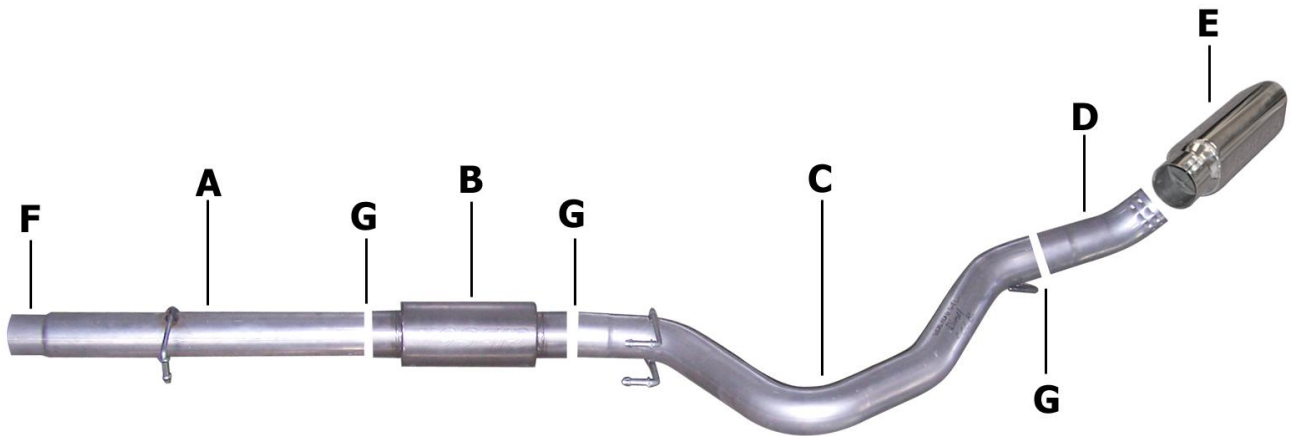




Installation Instructions

Cat-Back Tri Flow Stainless Single Exhaust
Ford F-250/F-350/F-450 Super Duty, 6.4L Diesel 2/4wd
Crew Cab, Long Bed

Part #619625-T



ITEM	PART	QUANTITY	DESCRIPTION
A	1143-700916S	1	4" Stainless Headpipe
B	789807S	1	Stainless Superflow SFT Muffler
C	1144-700917S	1	4" Stainless Over axle tailpipe
D	1145-700918S	1	4" Stainless Exit pipe with louvers
E	500426	1	6" Triangle Stainless tip
F	4170	1	3.5" Clamp
G	4171	3	4" Clamp

Thank you for purchasing our Gibson Exhaust System for your vehicle.
If you need further assistance, please do not hesitate to call our technical department at
(800) 528 -3044 Monday through Friday, 8am to 5 pm.

Installation Instructions #619625-T

When installing this exhaust system make sure to use proper safety precautions. Use jack stands when working under the vehicle, set parking brake, block tires and use safety glasses and gloves. Allow exhaust to cool before attempting installation. Severe injury or burns could occur if safety measures are not taken.

SUGGESTED TOOLS: 1/2", 9/16", 15mm wrenches & sockets, WD-40, hacksaw, jack stands

1. Disconnect the negative battery cable before removal of OEM exhaust. This will allow the computer to reset and recognize the new exhaust. Lay out the exhaust on the floor so it looks like the drawing and compare parts with manual.



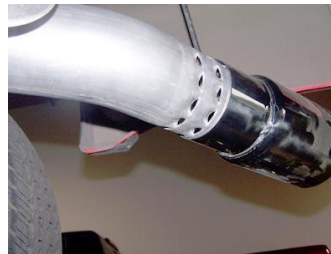
2. To remove your stock exhaust, remove the clamp located just behind the converter. Disengage the welded hangers from the OEM rubber grommets. Use WD-40 to aid in the process. Do not damage or remove the rubber grommets as you will re-use them. Now, cut off tailpipe and remove exhaust.



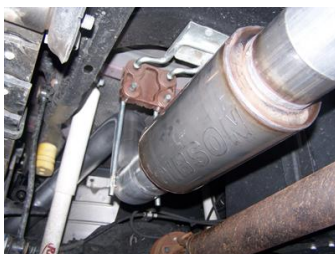
5. Install over axle tailpipe #C onto headpipe 1.5"-2". Use clamp #G to secure.



3. Install headpipe #A onto your existing stock front pipe and attach with clamp #F. Insert welded hanger into rubber grommet.



6. Next, slide exit pipe #D over the tailpipe. Use clamp #G to secure.



4. Install muffler #B onto headpipe #A 1.5"-2" with the louvers facing towards the tailpipe. Use clamp #G to secure the muffler to the headpipe. Do not tighten. Muffler outlet is looking into the louvers.



7. Install stainless steel tip. Make sure not to cover the louvers with the tip. The tip should come right up to the louvers, but do not cover. Clamp down. When you have everything in place, firmly tighten all bolts and clamps down securely. Use stainless steel cleaner and a Scotch Brite pad weekly to prevent tip from discoloration. Inspect all fasteners after 25-50 miles of operation and re-tighten as necessary. You may need to cut your stock tail pipe back to get your tip to fit correctly.

GIBSON EXHAUST systems are designed on a factory stock vehicle

Any aftermarket products installed could increase the sound levels of the exhaust.

Make sure there is a 1" clearance from ALL rubber brake lines, shock boots, lines, tires, etc. to prevent heat related damage or fire.