



INSTALLATION INSTRUCTIONS



2014-2017 DODGE RAM 2500/3500 4WD 7" DUAL SHOCK KIT

FTS23126/ FTS23127/ FTS23128/ FTS23129

FT23126i

Fabtech Motorsports | 4331 Eucalyptus Ave. Chino, CA 91710

Tech Line: 909-597-7800 | **Fax:** 909-597-7185 | **Web:** www.fabtechmotorsports.com

**- PARTS LIST -
DODGE RAM 2500/3500 4WD 7" DUAL SHOCK KIT**

FTS23126		7" DUAL SHOCK KIT W/ 2 PERF SHOCKS
2	FTS7347	PERFORMANCE SHOCK
2	FT44335	SWAY BAR LINKS
1	FT44362	HARDWARE SUBASSEMBLY
1	FT44286BK	DUAL SHOCK BRACKET DRIVER UPPER
1	FT44287BK	DUAL SHOCK BRACKET PASSENGER UPPER
1	FT44296BK	DUAL SHOCK BRACKET DRIVER LOWER
1	FT44297BK	DUAL SHOCK BRACKET PASSENGER LOWER

FTS23127		7" DUAL SHOCK KIT W/ 2 STEALTH SHOCKS
2	FTS6347	STEALTH MONOTUBE
2	FT44335	SWAY BAR LINKS
1	FT44362	HARDWARE SUBASSEMBLY
1	FT44286BK	DUAL SHOCK BRACKET DRIVER UPPER
1	FT44287BK	DUAL SHOCK BRACKET PASSENGER UPPER
1	FT44296BK	DUAL SHOCK BRACKET DRIVER LOWER
1	FT44297BK	DUAL SHOCK BRACKET PASSENGER LOWER

FTS23128		7" DUAL SHOCK KIT W/ 2 DIRT LOGIC SHOCKS
2	FT801082	DIRT LOGIC 2.25 RESI BLACK SHOCK
2	FT44335	SWAY BAR LINKS
1	FT44363	HARDWARE SUBASSEMBLY
1	FT44286BK	DUAL SHOCK BRACKET DRIVER UPPER
1	FT44287BK	DUAL SHOCK BRACKET PASSENGER UPPER
1	FT44296BK	DUAL SHOCK BRACKET DRIVER LOWER
1	FT44297BK	DUAL SHOCK BRACKET PASSENGER LOWER

FTS23129		7" DUAL SHOCK KIT W/ 4 DIRT LOGIC SHOCKS
2	FT801072	DIRT LOGIC 2.25 RESI BLACK SHOCK
2	FT801082	DIRT LOGIC 2.25 RESI BLACK SHOCK
2	FT44335	SWAY BAR LINKS
1	FT44364	HARDWARE SUBASSEMBLY
1	FT44286BK	DUAL SHOCK BRACKET DRIVER UPPER
1	FT44287BK	DUAL SHOCK BRACKET PASSENGER UPPER
1	FT44296BK	DUAL SHOCK BRACKET DRIVER LOWER
1	FT44297BK	DUAL SHOCK BRACKET PASSENGER LOWER

FT44340 - HARDWARE KIT		LOCATION
6	7/16-14 X 1 HEX BOLT G8 ZINC	UPPER BRACKET
12	7/16 SAE WASHER G8 ZINC	
6	7/16-14 C-LOCK NUT ZINC	
1	1/2-13 X 2 COUNTERSUNK BLACK	DRIVER UPPER PLATE
1	1/2-13 X 3-1/2 COUNTERSUNK BLACK	
1	1/2-13 X 2-1/2 HEX BOLT G8 ZINC	
1	1/2-13 X 3-3/4 HEX BOLT G8 ZINC	
3	1/2 SAE WASHER G8 ZINC	
2	1/2-13 C-LOCK NUT ZINC	
1	5/8-11 X 3-1/2 HEX BOLT G8 ZINC	DRIVER LOWER
1	5/8 SAE WASHER G8 ZINC	
2	M14-2.0 X 140MM HEX BOLT 10.9	SWAY BAR LOWER
4	M14 FLAT WASHER ZINC	
2	M14-2.0 C-LOCK NUT	
2	1/2-13 X 2-3/4 HEX BOLT G8 ZINC	SWAY BAR UPPER
6	1/2 SAE WASHER G8 ZINC	
4	1/2-13 C-LOCK NUT ZINC	
1	THREAD LOCKING COMPOUND	

FT44362		HARDWARE SUBASSEMBLY
2	FT110	SLEEVE .625 X .561 X 1.480
2	FT107	SLEEVE .630 X .501 X 1.480
8	FT1004	SWAY BAR LINK BUSHING HALF
2	FT83082	UNIVERSAL SHOCK CLEVIS
1	FT44239	WASHER 4.250 X .510 X .250
2	FT44336	UPPER MOUNT PLATE
1	FT44334	DRIVER NUT TAB
1	FT44355	DRIVER LOWER MOUNT SLEEVE
2	FT97150-6-106	SLEEVE 1.250 X .625 X 400
1	FT44340	HARDWARE KIT
1	FT23126i	INSTRUCTIONS
1	FTAS12	STICKER FT BLUE 10X4
1	FTAS16	DRIVER WARNING DECAL
1	FTREGCARD	REGISTRATION CARD

**- PARTS LIST -
2014 DODGE RAM 2500/3500 4WD 7" DUAL SHOCK KIT**

FT44363			HARDWARE SUBASSEMBLY		
2	FT110	SLEEVE .625 X .561 X 1.480			
2	FT107	SLEEVE .630 X .501 X 1.480			
8	FT1004	SWAY BAR LINK BUSHING HALF			
2	FT83082	UNIVERSAL SHOCK CLEVIS			
1	FT44239	WASHER 4.250 X .510 X .250			
2	FT44336	UPPER MOUNT PLATE			
1	FT44334	DRIVER NUT TAB			
1	FT44355	DRIVER LOWER MOUNT SLEEVE			
2	FT97150-6-106	SLEEVE 1.250 X .625 X 400			
1	FT44340	HARDWARE KIT			
1	FT23122i	INSTRUCTIONS			
1	FTAS12	STICKER FT BLUE 10X4			
1	FTAS16	DRIVER WARNING DECAL			
1	FTREGCARD	REGISTRATION CARD			
2	FTSP01029	HARDWARE PACK STEM BUSHING			
1	FT86008	HARDWARE & BUSHING KIT 8			
4	FT83077	RESI MOUNT			
4	FT89026	#48 HOSE CLAMP			

FT44364			HARDWARE SUBASSEMBLY		
2	FT110	SLEEVE .625 X .561 X 1.480			
2	FT107	SLEEVE .630 X .501 X 1.480			
8	FT1004	SWAY BAR LINK BUSHING HALF			
2	FT83082	UNIVERSAL SHOCK CLEVIS			
1	FT44239	WASHER 4.250 X .510 X .250			
2	FT44336	UPPER MOUNT PLATE			
1	FT44334	DRIVER NUT TAB			
1	FT44355	DRIVER LOWER MOUNT SLEEVE			
2	FT97150-6-106	SLEEVE 1.250 X .625 X 400			
1	FT44340	HARDWARE KIT			
1	FT23122i	INSTRUCTIONS			
1	FTAS12	STICKER FT BLUE 10X4			
1	FTAS16	DRIVER WARNING DECAL			
1	FTREGCARD	REGISTRATION CARD			
2	FTSP01029	HARDWARE PACK STEM BUSHING			
1	FT86008	HARDWARE & BUSHING KIT 8			
8	FT83077	RESI MOUNT			
8	FT89026	#48 HOSE CLAMP			



- TOOL LIST -

Required Tools (Not Included)

Basic Hand Tools
Floor Jack
Jack Stands
Assorted Metric and S.A.E sockets, and Allen wrenches
Torque Wrench

- PRE-INSTALLATION NOTES -

For technical assistance call: **909-597-7800** or e-mail: **info@fabtechmotorsports.com**

READ THIS BEFORE YOU BEGIN INSTALLATION -

Check all parts to the parts list above before beginning installation. If any parts are missing contact Fabtech at 909-597-7800 and a replacement part will be sent to you immediately.

Read all instructions thoroughly from start to finish before beginning the installation. If these instructions are not properly followed severe frame, driveline and / or suspension damage may occur.

Check your local city and state laws prior to the installation of this system for legality. Do not install if not legal in your area.

Prior to the installation of this suspension system perform a front end alignment and record. Do not install this system if the vehicle alignment is not within factory specifications. Check for frame and suspension damage prior to installation.

The installation of this suspension system should be performed by two professional mechanics.

This suspension must be installed with Fabtech shock absorbers.

Use the provided thread locking compound on all hardware.

WARNING- Installation of this system will alter the center of gravity of the vehicle and may increase roll over as compared to stock.

Vehicles that receive oversized tires should check ball joints, uniballs, tie rods ends, pitman arm and idler arm every 2500-5000 miles for wear and replace as needed.

Verify differential fluid is at manufactures recommended level prior to kit installation. Installation of the kit will reposition the differential and the fill plug hole may be in a different position. (For example, if the manufacture recommends 3 quarts of fluid, make sure the diff has 3 quarts of fluid). Check your specific manual for correct amount of fluid.

FOOTNOTES -

- Passenger dual shock bracket must be removed to change engine oil filter

- INSTRUCTIONS -

FRONT SUSPENSION

1. Disconnect the negative terminal on the battery. Jack up the front end of the truck and support the frame rails with jack stands. **NEVER WORK UNDER AN UNSUPPORTED VEHICLE!** Remove the front tires.
2. Remove front inner fender liners. Save all hardware and liners for re-installation. Remove front shocks, springs, and disconnect the factory sway bar.
3. Working from the drivers side, remove the ABS module cover. Next, remove and save the 3 bolts attaching the module to the bracket. **SEE FIGURE 1-2**



FIGURE 1 - STEP 3



FIGURE 2 - STEP 3

4. Locate FT44286BK (Driver Upper Bracket) and 7/16" hardware. With the bracket in place, mark and drill the 3 holes on the upper coil spring mount. Install the 7/16" bolts, washers and nuts. Leave loose at this time. **SEE FIGURES 3-4**



FIGURE 3 - STEP 4

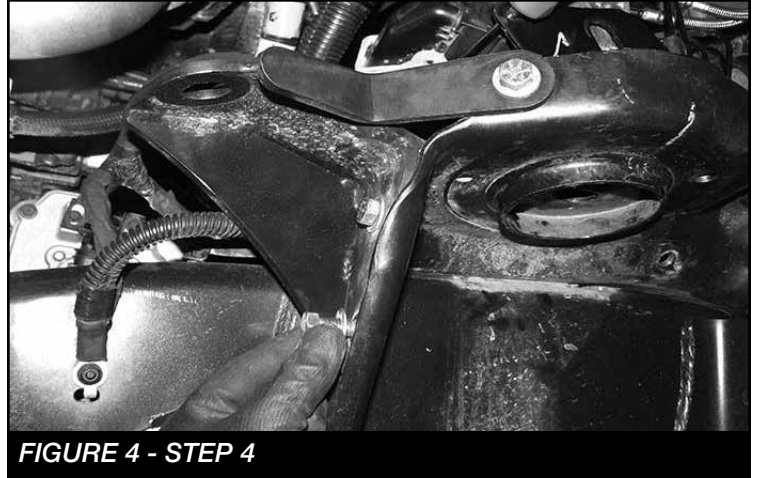


FIGURE 4 - STEP 4

5. Locate FT44336 (Upper coil mount plate), 1/2"-13 x 2" countersunk bolt, washer and nut. The countersunk bolt will be installed under the ABS module. Install the FT44336 Plate to the bottom side of the coil mount with the 1/2" washer and nut. Torque to 59 ft-lbs. Next, torque the 7/16" hardware to 83 ft-lbs. **SEE FIGURE 5 - NOTE:** If installing with the new Fabtech coil spring kit use the 1/2"-13 x 3-1/2" countersunk bolt to work with the coil spring retainer.



FIGURE 5 - STEP 5

6. Moving to the driver side lower coil perch, locate FT44296BK (driver lower bracket), FT44334 (nut tab), FT44348 (driver lower sleeve) and 5/8" bolt and washer. Install the bracket and sleeve like shown in figures 6-7 with the nut tab being used inside of the coil perch. Torque to 129 ft-lbs. **SEE FIGURES 6-7**

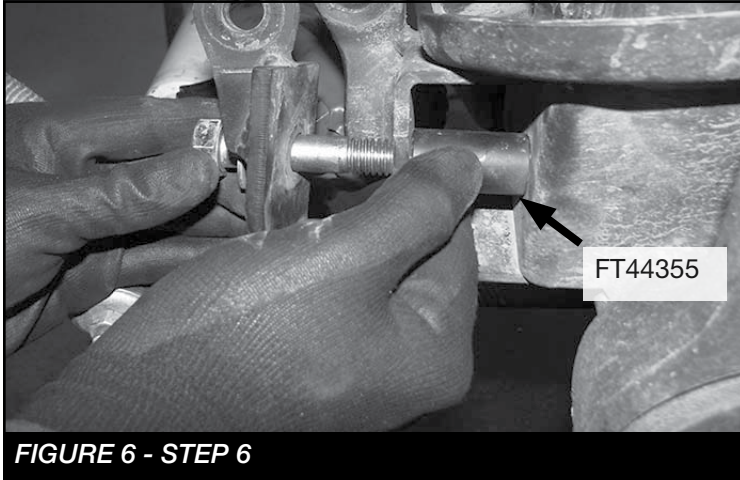


FIGURE 6 - STEP 6

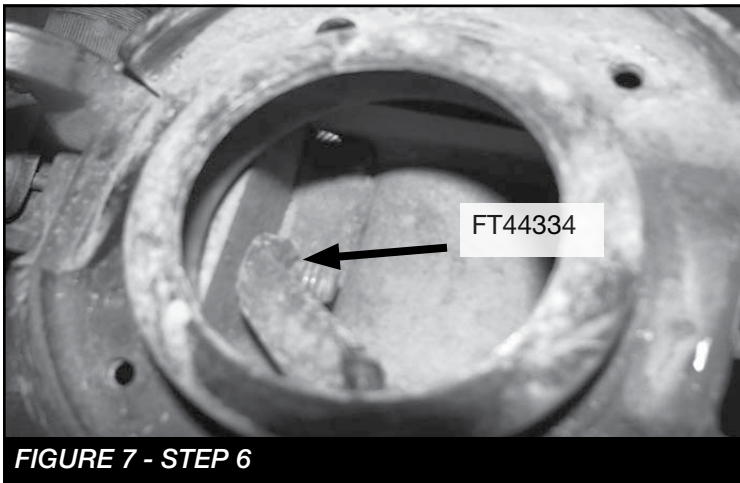


FIGURE 7 - STEP 6

7. Moving to the passenger side, locate FT44287BK (passenger upper bracket), FT44239 (Washer), FT44336 (mount plate), 1/2"-13 x 2-1/2" bolt, nut, washers and 7/16" hardware.

8. Install FT44287BK (Upper shock bracket) as you did in step 4. **NOTE: Install FT44239 (washer) on the top side of the coil bucket first. NOTE: If installing with the coil spring kit, use the 1/2"-13 x 3-3/4" Bolt.** Torque 1/2" bolt to 90 ft-lbs and 7/16" hardware to 59 ft-lbs. **SEE FIGURES 8-9**

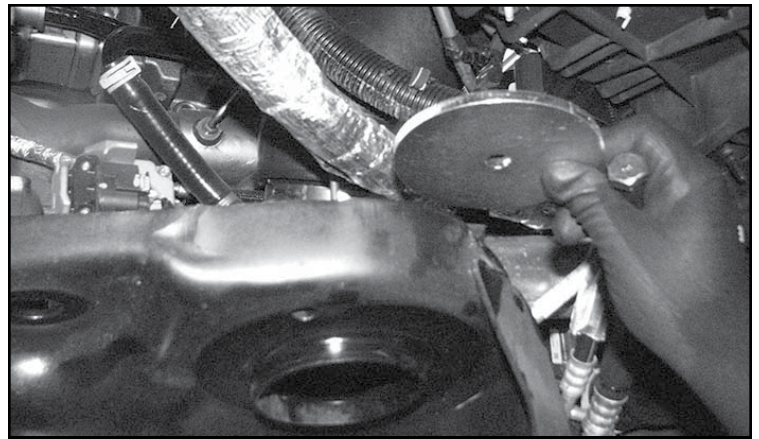


FIGURE 8 - STEP 8

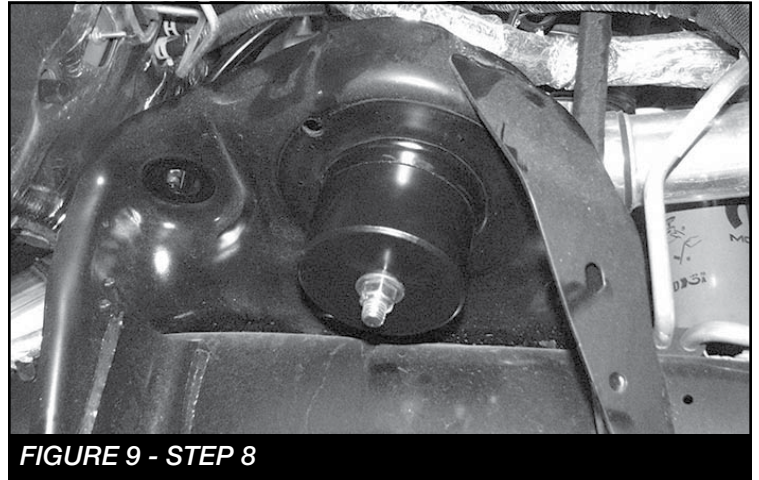


FIGURE 9 - STEP 8

9. Remove the track bar bolt at the axle and install FT44297BK. Torque to 140 ft-lbs. **SEE FIGURES 10-11**

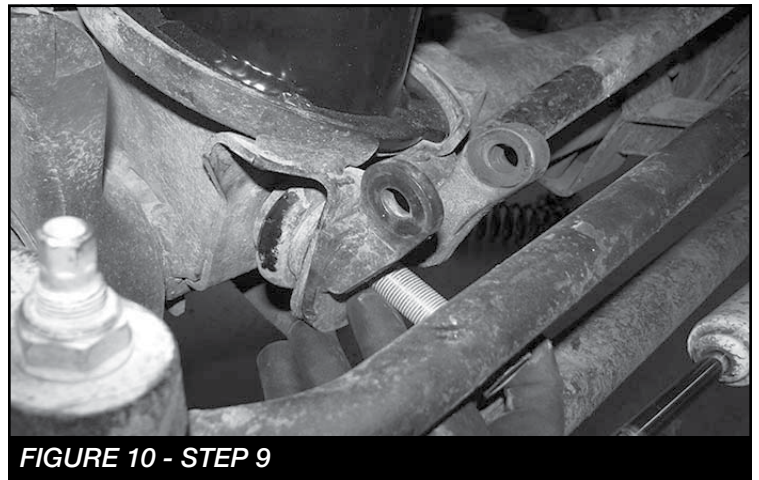


FIGURE 10 - STEP 9

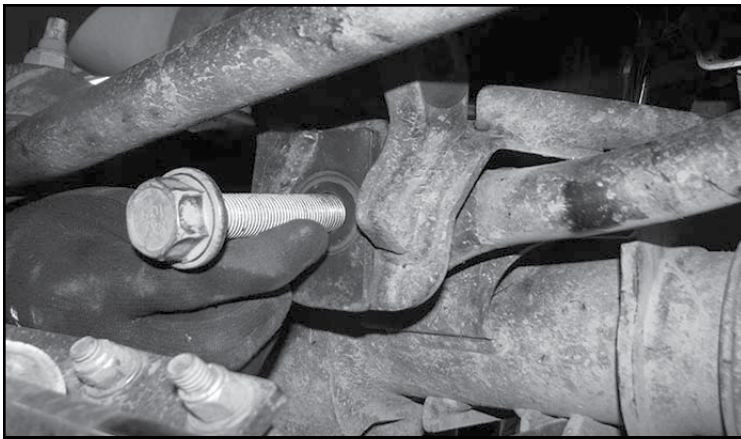
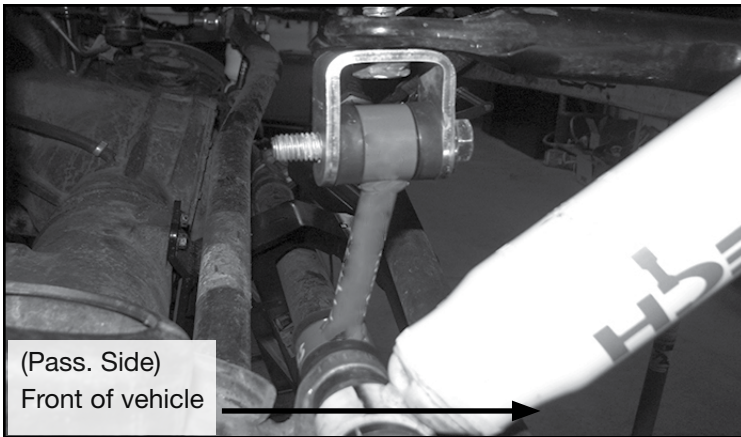


FIGURE 11 - STEP 9

10. Re-install the coil springs and primary shocks.
11. Locate the new secondary shocks and press the bushings and sleeves into place. Locate FT44335BK (sway bar links), FT1004 (bushings), FT110 (upper sleeve) and FT107 (lower sleeve). Using **FIGURE 13** as a diagram. Install the secondary shocks and end links using the provided hardware. Refer to **FIGURE 12** for the correct orientation.



(Pass. Side)
Front of vehicle

FIGURE 12 - STEP 11

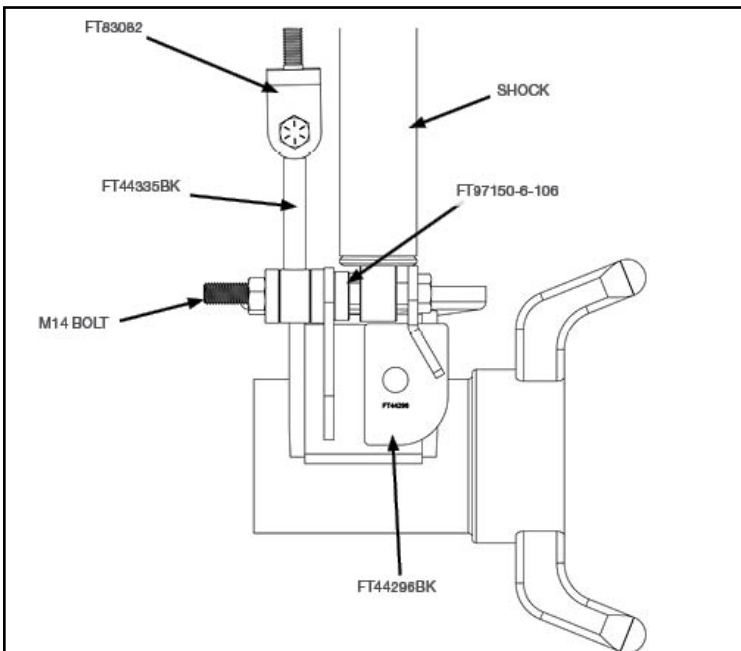


FIGURE 13 - STEP 11

12. Reconnect the sway bar using the supplied 1/2" hardware. Torque to 127 ft-lbs.
13. Locate the factory fender liners. Set both driver and passenger side down next to each other like shown in **FIGURE 14**.

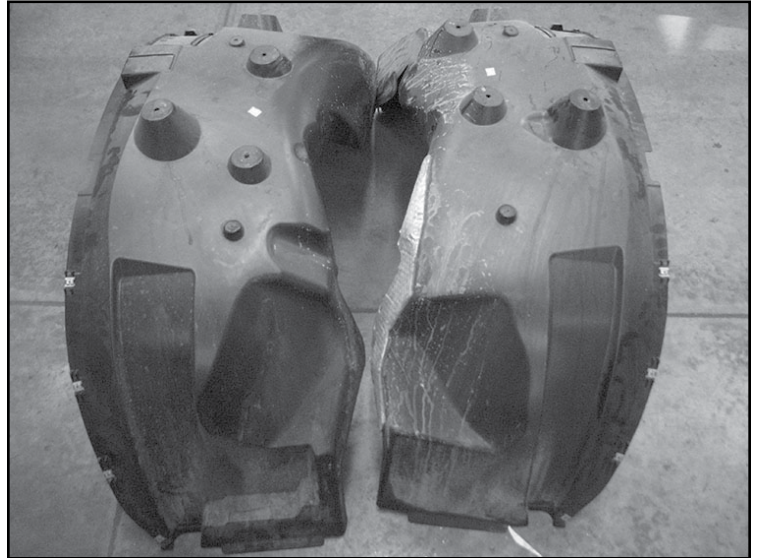


FIGURE 14 - STEP 13

14. Mark and cut the drivers side liner to mirror the passenger side. **SEE FIGURES 15-17**

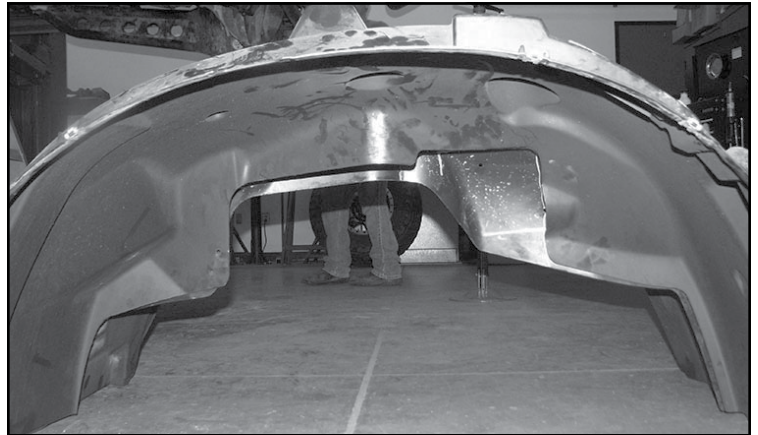


FIGURE 15 - STEP 14

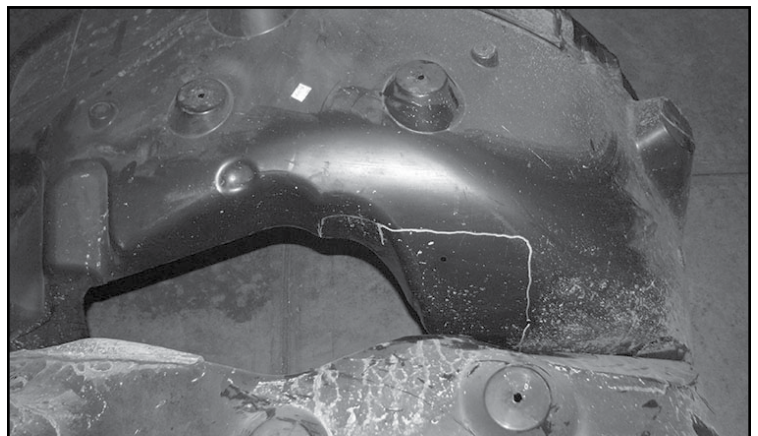


FIGURE 16 - STEP 14



FIGURE 17 - STEP 14

15. Reinstall both fender liners. **SEE FIGURE 18**



FIGURE 18 - STEP 15

16. Install tires and wheels and torque lug nuts to wheel manufacturer's specifications.
17. Check front end alignment and set to factory specifications. Readjust headlights.
18. Recheck all bolts for proper torque.
19. Recheck brake hoses, ABS wires and suspension parts for proper tire clearance while turning tires fully left to right.
20. Check the fluid in the front and rear differential and fill if needed with factory specification differential oil. **Note - some differentials may expel fluid after filling and driving. This can be normal in resetting the fluid level with the new position of the differential/s.**
21. Install Driver Warning Decal. Complete product registration card and mail to Fabtech in order to receive future safety and technical bulletins on this suspension.

Vehicles that will receive oversized tires should check ball joints, uniballs and all steering components every 2500-5000 miles for wear and replace as required.

RE-TORQUE ALL NUTS, BOLTS AND LUGS AFTER 50 MILES AND PERIODICALLY THEREAFTER.

For technical assistance call: **909-597-7800**

- Product Warranty and Warnings -

Fabtech provides a Limited Lifetime Warranty to the original retail purchaser who owns the vehicle, on which the product was originally installed, for defects in workmanship and materials.

The Limited Lifetime Warranty excludes the following Fabtech items; bushings, bump stops, ball joints, tie rod ends, limiting straps, cross shafts, heim joints and driveshafts. These parts are subject to wear and are not considered defective when worn. They are warranted for 60 days from the date of purchase for defects in workmanship.

Dirt Logic and Performance Coilover take apart shocks are considered a serviceable shock with a one year warranty on leakage only. Service seal kits are available separately for future maintenance. All other shocks are covered under our Limited Lifetime Warranty.

Fabtech does not warrant any product for finish, alterations, modifications and/or installation contrary to Fabtech's instructions. Alterations to the finish of the parts including but not limited to painting, powder coating, plating and/or welding will void all warranties. Some finish damage may occur to parts during shipping, which is considered normal and is not covered under warranty.

Fabtech products are not designed nor intended to be installed on vehicles used in race applications or for racing purposes or for similar activities. (A "RACE" is defined as any contest between two or more vehicles, or any contest of one or more vehicle against the clock, whether or not such contest is for a prize). This warranty does not include coverage for police or taxi vehicles, race vehicles, or vehicles used for government or commercial purposes. Also excluded from this warranty are sales outside of the United States of America.

Installation of most suspension products will raise the center of gravity of the vehicle and will cause the vehicle to handle differently than stock. It may increase the vehicle's susceptibility to a rollover, on road and off road, at all speeds. Extreme care should be taken to operate the vehicle safely at all times to prevent rollover or loss of control resulting in serious injury or death. Fabtech front end Desert Guards may impair the deployment or operation of vehicles equipped with supplemental restraining systems/air bag systems and should not be installed if the vehicle is equipped as so.

Fabtech makes every effort to ensure suspension product compatibility with all vehicles listed on the website, but due to unknown auto manufacturer's production changes and/or inconsistencies by the auto manufacturer, Fabtech cannot be responsible for 100% compatibility, including the fitment of tire and wheel sizes listed. The Tire and Wheel sizes listed in Fabtech's website are only a guideline for street driving with noted fender trimming. Fabtech is not responsible for damages to the vehicle's body or tires. Fabtech is not responsible for premature wear of factory components due to the installation of oversized tires and wheels.

Fabtech's obligation under this warranty is limited to the repair or replacement, at Fabtech option, of the defective product only. All costs of removal, installation or re-installation, freight charges, incidental or consequential damages are expressly excluded from this warranty. Fabtech is not responsible for damages and/or warranty of other vehicle parts related or non related to the installed Fabtech product. This warranty is expressly in lieu of all other warranties expressed or implied. This warranty shall not apply to any product that has been subject to accident, negligence, alteration, abuse or misuse as determined by Fabtech.

Fabtech suspension components must be installed as a complete system including shocks as shown on our website. All warranties will become void if Fabtech parts are combined and/or substituted with other aftermarket suspension products. Combination and/or substitution of other aftermarket suspension parts may cause premature wear and/or product failure resulting in an accident causing injury or death. Fabtech does not warrant products not manufactured by Fabtech.

Depending on the condition of the factory suspension components retained after the installation of a Fabtech suspension not all vehicles may have the same ride stance front to rear as described in the website. The blue color of suspension components shown in all Fabtech photographs are for display purposes only. Majority of all Fabtech components will be black specifically where noted with part numbers ending in BK.

Installation of Fabtech product may void the vehicles factory warranty; it is the consumer's responsibility to check with their local vehicle's dealer for warranty disposition before the installation of the product. Some state laws may prohibit modification of suspension to a vehicle in whole or in part. It is the responsibility of the installer and consumer to consult local laws prior to the installation of any Fabtech suspension product to comply with such written laws.

It is the responsibility of the distributor and/or the retailer to review all warranties and warnings of Fabtech products with the consumer prior to purchase.

Fabtech reserves the right to super cede, discontinue, change the design, finish, part number and/or application of parts when deemed necessary without written notice. Fabtech is not responsible for misprints or typographical errors within the website or price sheet. For the most recent Product Warranty and Warnings visit our website www.fabtechmotorsports.com