



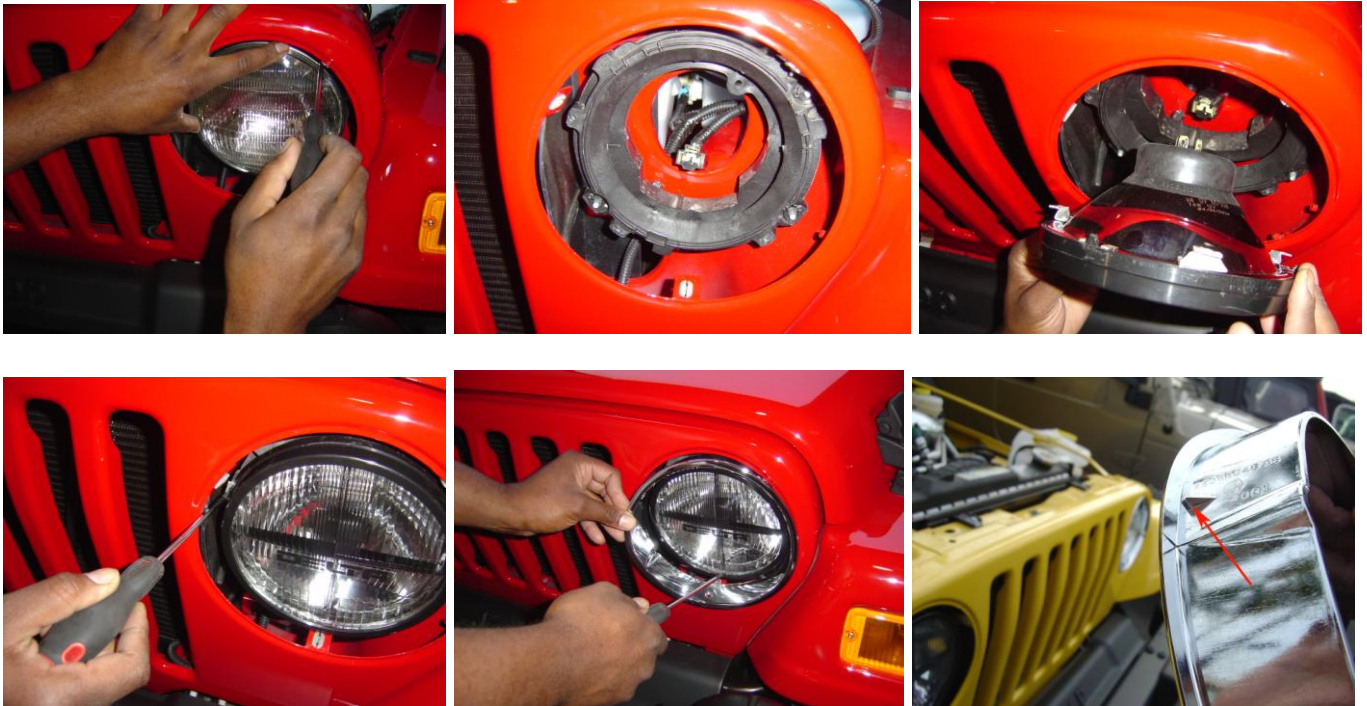
# DELTA JEEP® QUAD-BAR XENON HEADLAMP KIT

## Round Replacement for JEEP Wrangler TJ 1997-2006

P/N 01-1199-50X

### INSTALLATION INSTRUCTION

1. Remove your existing headlamps by unscrewing the chrome plastic bezel surrounding the headlamp.
2. Remove the ring holding the headlamp with (4) four screws. You will no longer need it.
3. Unplug the socket in the back of the headlamp element.
4. Plug in your DELTA Quad-Bar headlamp element and screw back to the headlamp bucket using your existing screws.



5. Take your plastic bezel and file down one locking bump (as shown in the photo) so you may save yourself some possible hassle in the future, if you ever need to remove the headlamps.
6. DELTA Quad-Bar headlamps are equipped with "City Lights" (small, low wattage bulbs on the side of your reflector). These "City Lights" could be used as extra parking lights, daytime running lights or directional lights (if you replace them with amber color). For parking lights, just tap your City Light to your existing parking light. For DRL application, you may tap into your ignition switch line. For directional lights, replace the miniature bulbs with amber color bulbs and tap each to respective factory directional light wire lead.

## SUPPLEMENTAL INSTALLATION INSTRUCTIONS FOR “City Lights”

If your Headlights or Auxiliary lights came with extra miniature “City Lights” and you wonder why or how to wire them up then this instruction should help. You can utilize the existing miniature parking lights which came with your lights or headlight or explore other options described below:

1. As Parking Lights, by using provided miniature bulbs and running any automotive wire from your headlights to your factory wire lead leading to your parking lights and splicing it into that wire lead. The other prong on your miniature bulb should be grounded to any metal surface on the vehicle. Now each time you turn your parking lights your headlights will glow as well.
2. As Turn Signal Lights, by installing an amber miniature incandescent bulb (Part No.03-5053-50B) or high output LED amber bulb (Part No.03-5053-50LA) and running any automotive wire from right and left headlight to your factory wire leading to your right and left blinkers and splicing them into respective wire leads. The other prong on your miniature amber bulb should be grounded to any metal surface on the vehicle.
3. As Daytime Running Lights (DRL), by installing a miniature 20A halogen bulb (Part No.03-5053-50D) or high output LED bulb (Part No.03-5053-50LW) and running any automotive wire from your headlights to your factory wire leading from your ignition and splicing them into that portion of the wire which becomes energized the moment you turn your ignition. The other prong on your miniature amber bulb should be grounded to any metal surface on the vehicle.
4. Other uses like LED red Emergency Lights (Part No.03-5053-50LR) or LED blue Police Lights (part No. 03-5053-50LB) both are reserved for law enforcement, fire and forestry services.



LED BULBS: WHITE, AMBER, BLUE AND RED



HALOGEN BULB



INCANDESCENT AMBER