

advanced FLOW engineering Momentum Air Intake

Instruction Manual P/N: 51-74007 / 54-74007

Make: **Chevrolet** Model: **Colorado** Year: **2016-2019** Engine: **I4-2.8L (td) Duramax (LWN)**

Make: **GMC** Model: **Canyon** Year: **2016-2019** Engine: **I4-2.8L (td) Duramax (LWN)**

Note: **Includes Denali models.**



- Please read the entire instruction manual before proceeding.
- Ensure all components listed are present.
- If you are missing any of the components, call technical support at 951-493-7100 or e-mail tech@afepower.com.
- Ensure you have all necessary tools before proceeding.
- Do not attempt to work on your vehicle when the engine is hot.
- Disconnect both the negative battery terminal before proceeding.

Retain factory parts for future use.

Label	Qty.	Description	Part Number
A1	1	Pro 5R (Blue Media)	24-91092
A2	1	Pro DRY S (Gray Media)	21-91092
B	1	Tube	05-74007B1
C	1	Housing	05-74106B2
D	1	Plug, Urethane	05-01361
E	1	Seal Trim (7/16") (18 inches)	05-00072
F	1	Clamp, T-bolt (3-1/4" -3-9/16")	03-50292
G	1	Coupling, Silicone	05-01376
H	2	Screw, Torx: M4 x .7 x 8mm	03-50491
I	1	Clamp, #044	03-50019

Installation will require the following tools:

10mm & 8mm nut drivers, flat head screwdriver & #3 Phillips screwdriver, pliers, T20 drivers, 11mm deep socket & driver

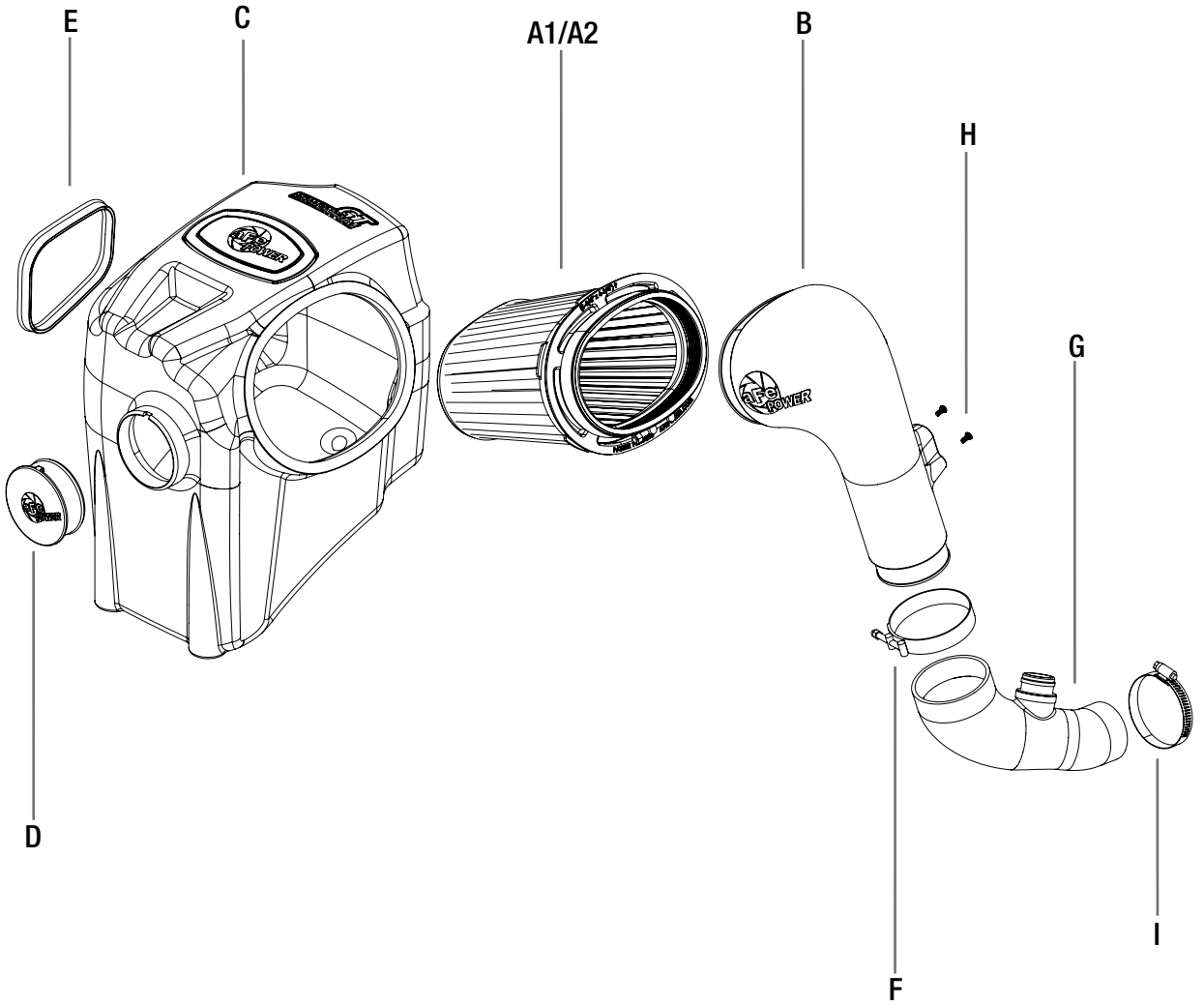




Figure A

Refer to Figure A for Step 1

Step 1: Use an 8mm nut driver to loosen the stock clamps (1). Remove the upper intake tube (2).



Figure B

Refer to Figure B for Step 2

Step 2: Disconnect the mass air flow sensor (3). Disengage the wire loom clip (4) from the air box. Remove the upper half of the air box with a #3 Phillips screwdriver and remove the air filter.

**Figure C****Refer to Figure C for Step 3**

Step 3: Use a 10mm nut driver to remove the two nuts (5) holding the air box and set aside. Remove the air box with the attached air inlet by pulling up to release the air box from its mounting grommet.



Figure D

Refer to Figure D for Step 4

Step 4: Rotate the coolant reservoir hose clamps (6) so the ears point up.

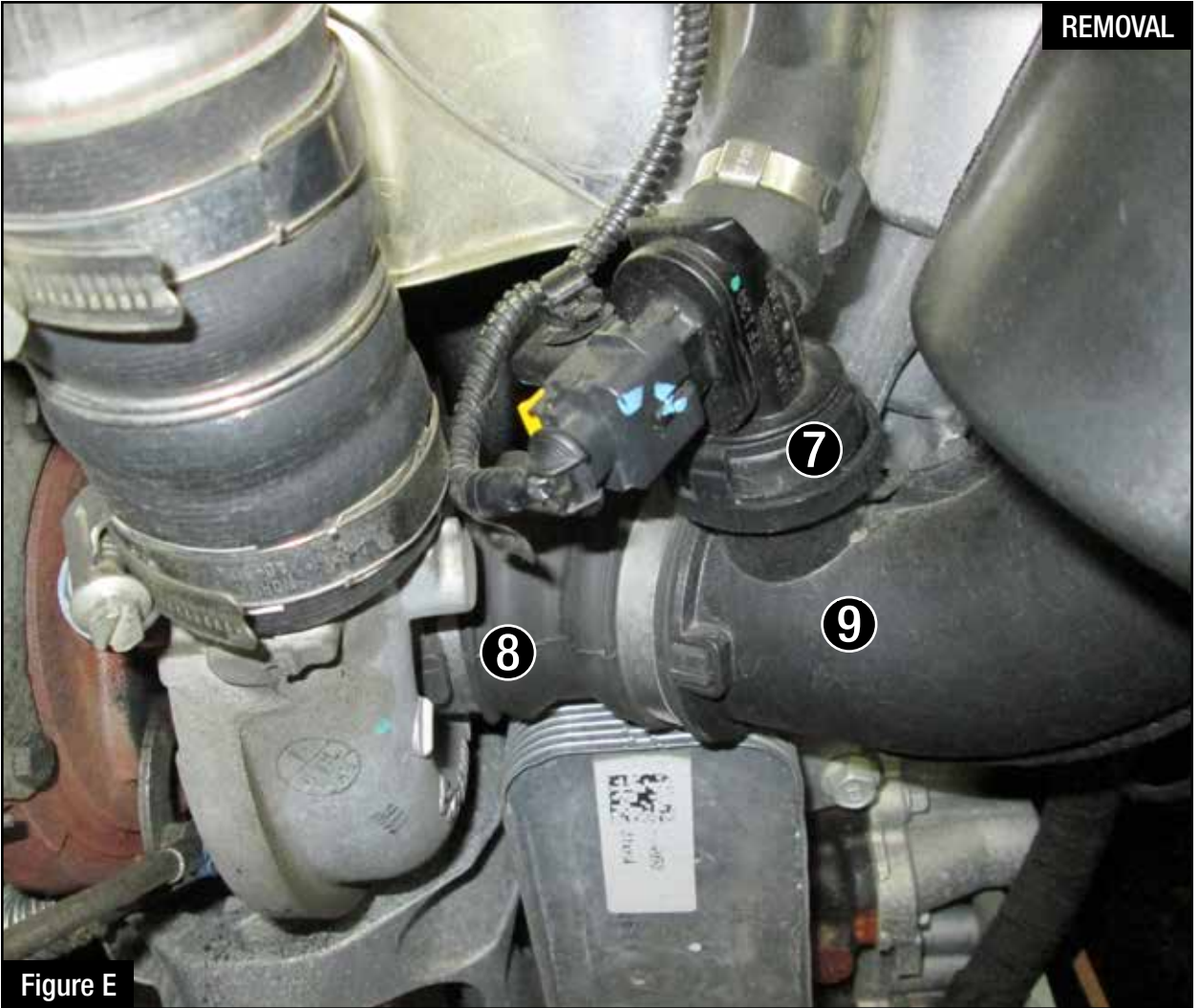


Figure E

Refer to Figure E for Step 5

Step 5: Disconnect the breather hose (7) and loosen the clamp (8) at the turbo. Remove the lower intake tube (9).

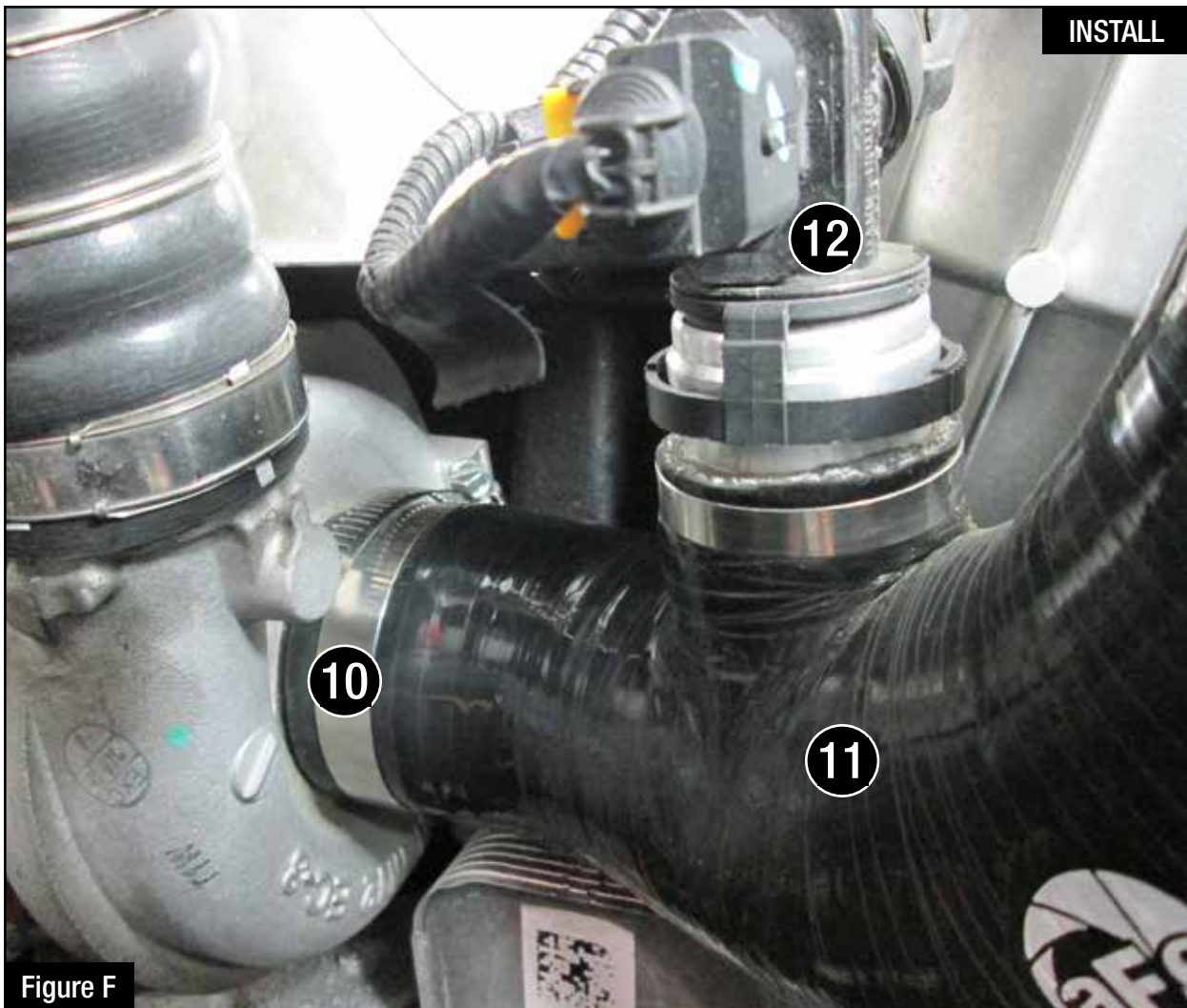


Figure F

Refer to Figure F for Step 6

Step 6: Install the supplied clamp (10) on the supplied silicone coupler (11). Install the coupler with clamp on the turbo and tighten the clamp. Connect the breather hose (12).



Figure G

Refer to Figure G for Step 7

Step 7: Using a Torx 20 driver, remove the mass air flow sensor (13) from the upper half of the air box and install it on the aFe intake tube with the two supplied screws. Do not overtighten.



Figure H

Refer to Figure H for Step 8

Step 8: Install the supplied trim seal (14) on the opening of the aFe air box.



Refer to Figure I for Step 9

Step 9: Remove the two grommets with metal spacers (15) from the lower half of the air box and install them onto the aFe air box.



Figure J

Refer to Figure J for Step 10

Step 10: Install the aFe air box into the vehicle by pushing down the air box pin into the rubber grommet and through two front studs. Secure air box with the two nuts removed in step 3 with a 10mm nut driver.



Figure K

Refer to Figure K for Step 11

Step 11: Slide the aFe filter and clamp into the aFe housing and push it in until it locks into place. Do not tighten clamp at this time.



Figure L

Refer to Figure L for Step 12

Step 12: Install the supplied T-bolt clamp (16) on the silicone coupler. Install the aFe intake tube into the vehicle. Slide into the air filter first. Then slide it into the silicone coupler. Tighten all clamps.

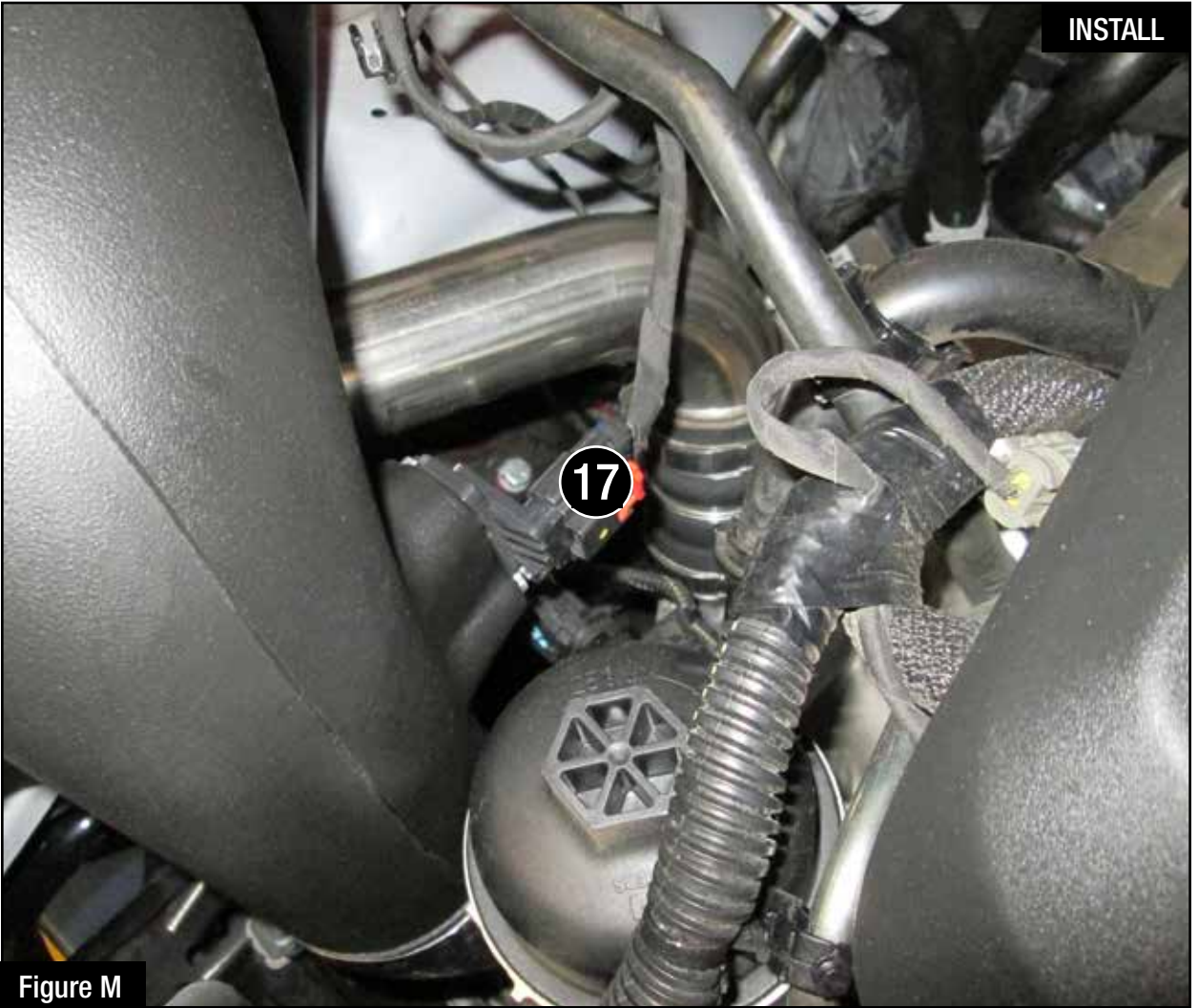


Figure M

Refer to Figure K for Step 13

Step 13: Re-connect the Mass Air Flow Sensor (17).

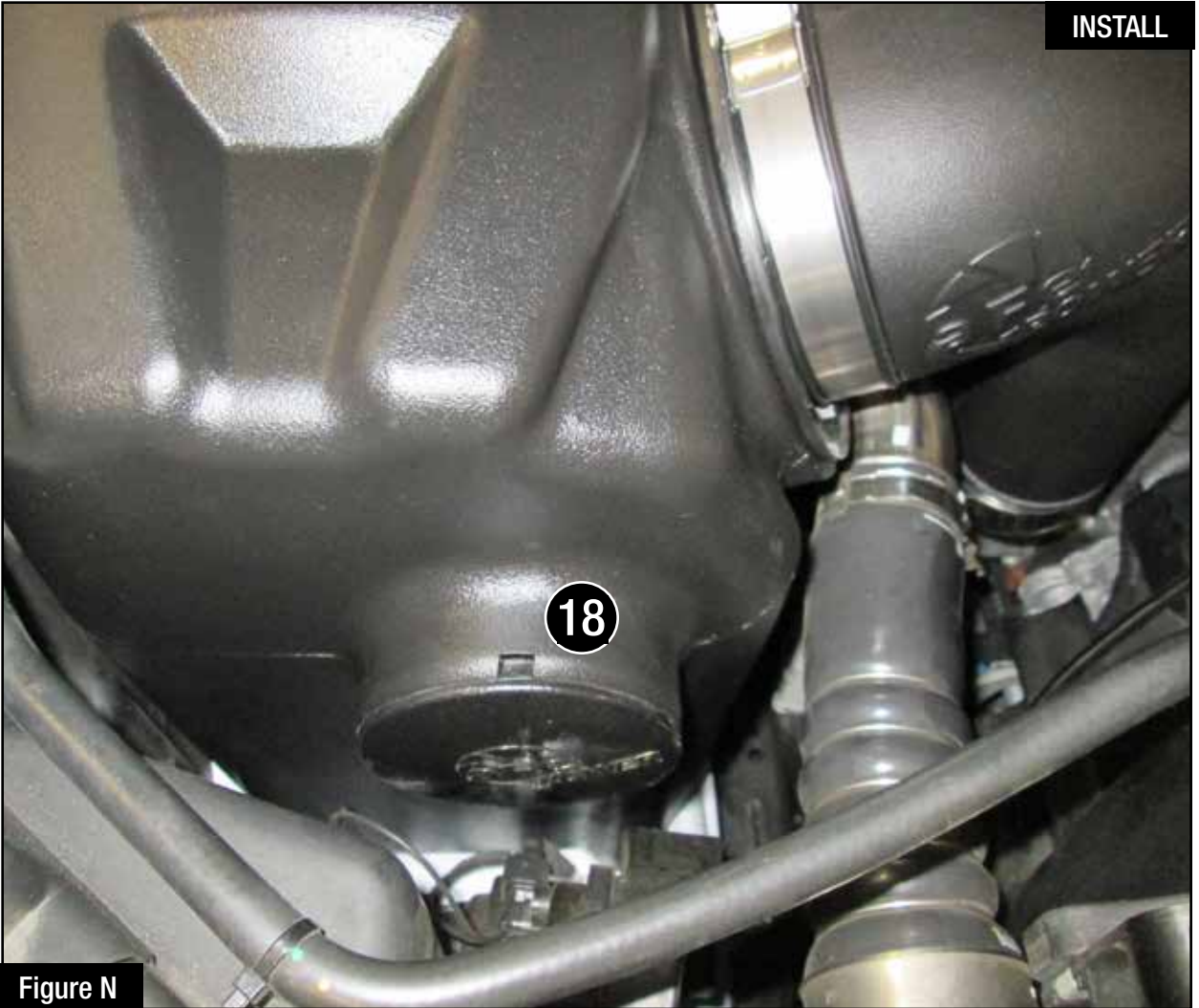


Figure N

Refer to Figure N for Step 14

Step 14: Use the provided plug (18) to close additional air inlet if you want to completely seal the air box. Best performance gain is obtained by having more flow (no plug). Check all the components are tight and secure. Your installation is now complete. Thank you for choosing aFe Power!

NOTE: Check all bolts, clamps, and connectors after 200 miles. Place enclosed CARB EO sticker on or near the device on a smooth/clean surface. EO identification label is required to pass the smog test inspection.



Pro DRY S Air Filter



P/N: 21-91092

Pro 5R Air Filter



P/N: 24-91092

Pro DRY S Restore Kit



P/N: 90-59999

Blue Squeeze Restore Kit



P/N: 90-50501

Exhaust



P/N: 49-04064-B (w/ Blk Tip)
49-04064-P (w/ Pol Tip)

Side Exit Exhaust



P/N: 49-44065-B (w/ Blk Tip)
49-44065-P (w/ Pol Tip)

Front Coilovers



P/N: 501-5600-03

Rear Shocks



P/N: 502-0052-02

Intercooler Tubes



P/N: 46-20264-B (Blk)
46-20264-R (Red)

Module



P/N: 77-44009

To purchase any of the items above, view airflow charts, dyno graphs, photos, and video; please go to aFepower.com.

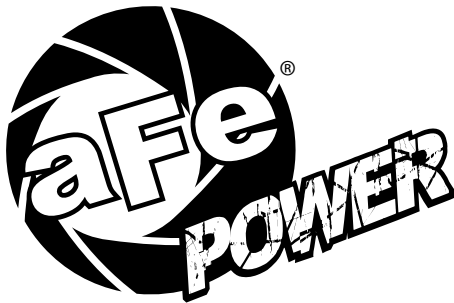
Warranty

General Terms:

- aFe warrants their products to be free from manufacturer's defects due to workmanship and material.
- This warranty applies only to the original purchaser of the product and is non-transferrable.
- Proof of purchase of the aFe product is required for all warranty claims.
- Warranty is valid provided aFe instructions for installation and/or cleaning were properly followed.
- Proper maintenance with regular inspections of product is required to insure warranty coverage.
- Damage due to improper installation, abuse, unauthorized repair or alteration is not warranted.
- Incidental or consequential damages or cost, including installation and removal of part, incurred due to failure of aFe product is not covered under this warranty.
- All warranty is limited to the repair and/or replacement of the aFe part. To request Return Goods Authorization ("RGA"), email RGA@afepower.com or call (951)493-7100. Upon receipt of the RGA, you must return the product to the address provided in the RGA, freight prepaid and accompanied with a dated proof of purchase and the RGA. Upon receipt of the defective product and upon verification of proof of purchase, aFe will either repair or replace the defective product within a reasonable time, not to exceed thirty days.

Product Category	P/N Prefix	Warranty duration
Direct OE Replacement Filters	10, 11, 30, 31, 71, 73	Life of the vehicle
Racing Filters	18	1 year
Universal	21, 24, 72	2 years
Air Intake Systems	50, 51, 54, 55, 75	2 years
Exhaust Systems	49	2 years
Intercoolers & Intercooler Tubes	46-2	2 years
Intake Manifolds	46-1	2 years
Differential Cover	46-7	Life of the vehicle
Exhaust Manifolds	46	2 years
Throttle Body Spacers	46-3	2 years
Fluid Filters	44	90 days
Pre-Filters	28	2 years
Heavy Duty OE Replacement	70	2 years
PowerSports OE Replacement	81, 87	2 years
PowerSports Intake Systems	85	2 years

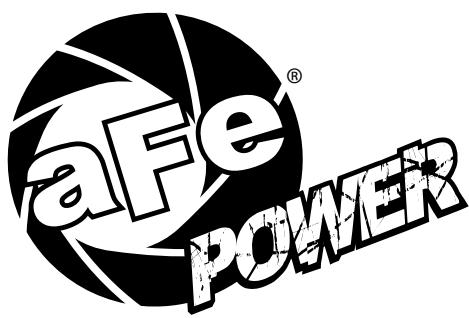
No other warranty expressed or implied applies nor is any person or advanced FLOW engineering authorized to assume any other warranty. Some States do not allow the exclusion or limitation of incidental or consequential damages or do not allow limitations on how long an implied warranty lasts, so the above limitations or exclusions may not apply to you. This warranty gives you specific legal rights, and you may also have other rights which vary from State to State.



advanced FLOW engineering, inc.

252 Granite Street Corona, CA 92879

TEL: 951.493.7155 • TECH: 951.493.7100



advanced FLOW engineering

Scorch HD Module

Instruction Manual P/N: 77-44009

Make: **Chevrolet** Model: **Colorado** Year: **2016-2019** Engine: **I4-2.8L (td) Duramax (LWN)**

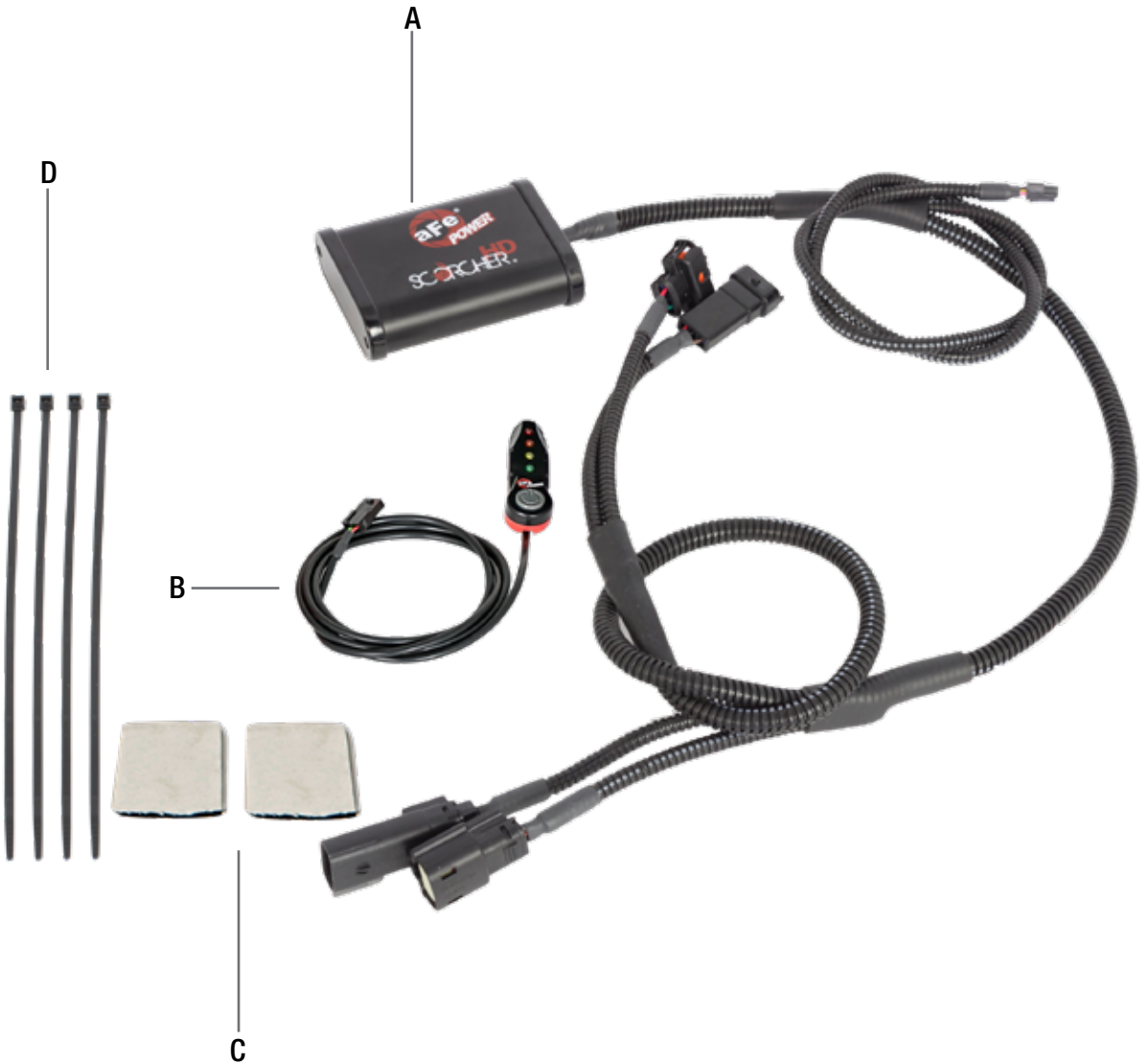
Make: **GMC** Model: **Canyon** Year: **2016-2019** Engine: **I4-2.8L (td) Duramax (LWN)**

NOTE: Includes Denali Models.



- Please read the entire instruction manual before proceeding.
- Ensure all components listed are present.
- If you are missing any of the components, call customer support at 951-493-7100.
- Ensure you have all necessary tools before proceeding.
- Do not attempt to work on your vehicle when the engine is hot.
- Disconnect the negative battery terminal before proceeding.
- Retain factory parts for future use.

Label	Qty.	Description	Part Number
A	1	Module	R77-44009
B	1	LED Switch	05-70029
C	2	Velcro (2 Inches)	05-01244
D	4	Cable Ties	05-60167





SLEEP MODE

Figure A

Refer to Figure A for Step 1.

Step 1: Before installing your aFe module, you will have to place your vehicles ECU in sleep mode. In order to do this you will need to do the following:

- If the engine is cold, open the hood, close the doors, lock the car, and wait 30 seconds.
- If the engine is warm, open the hood, close the doors, lock the car, and wait 20 minutes.
- If the engine is warm and you can't wait 20 minutes, disconnect the battery.



NOTE: Do NOT open the doors or start the vehicle when one of the sensors is disconnected. This could create a check engine light.



Figure B

Refer to Figure B for Steps 2-3.

Step 2: Remove engine cover and foam insulation on the driver side.

Step 3: Locate the MAP and Fuel Pressure sensor. They are both close to each other located on the passenger side. MAP is located by the engine oil fill in the middle of the fuel rail and throttle body, Fuel pressure is located at the end of the fuel rail close to the fire wall.



NOTE: To gain more space accessing the sensors, remove the foam insulation on the driver side, reinstall once complete.

**Figure C****Refer to Figure C for Steps 4-5.**

Step 4: Locate and disconnect the fuel pressure sensor connector, by pressing down on the locking tab and sliding the connector out of the sensor.

Step 5: Locate the fuel pressure sensor jumper harness on the aFe module. These connectors are labeled “fuel”. Plug the female connector of the module into the fuel pressure sensor, then take the male connector of the module and connect it to the female connector of the engine harness.



Figure D

Refer to Figure D for Step 6.

Step 6: Check with the pictures to make sure the connectors are correctly connected.



NOTE: Make sure connections are fully engaged. Usually, connectors make a snapping sound when fully engaged.

**Figure E****Refer to Figure E for Steps 7-8.**

Step 7: Disconnect the MAP sensor connector, by pressing down on the locking tab and sliding the connector out of the sensor.

Step 8: Locate the MAP sensor jumper harness on the aFe module. This is the large connector. Plug the male connector of the module to the stock map sensor, then the female connector of the module male connector of the engine harness.



Figure F

Refer to Figure F for Step 9.

Step : Check with the pictures to make sure the connectors are correctly connected.



NOTE: Make sure connections are fully engaged. Usually, connectors make a snapping sound when fully engaged.



Figure G

Refer to Figure G for Steps 10-11.

Step 10: Select the desired location of the LED switch. Route the cable on the back of the switch to exit toward the top or bottom.

Step 11: Mount the Switch on an open, flat surface.



Figure H

Refer to Figure H for Step 12.

Step 12: Route the switch cable through firewall and into the engine bay. Follow the main harness through the grommet into the firewall. Plug the end of the cable into the module.



Refer to Figure I for Steps 13-14.

Step 13: Mount the module in a safe location, such as on the battery, using the supplied Velcro strip.

Then, secure the wires and module away from any extreme heat and moving parts, with the provided ties. Make sure all connections are secured and fully engaged.

Step 14: Reinstall the foam insulation and engine cover.

NOTE: Place enclosed CARB EO sticker on or near the device on a smooth, clean surface. EO identification label is required to pass the smog test inspection.



Figure J

Refer to Figure J for Step 15.

Step 11: When turning on the vehicle, the switch will go through the light. It will stop at its last setting.

The LED on the switch represents the different level of power.

- Green LED: Stock
- Yellow LED: Sport
- Orange LED: Sport+
- Red LED: Race

Use the grey button to select the desired setting. Power adjustments can be done at any moment.

NOTE: Place enclosed CARB EO sticker on or near the device on a smooth, clean surface.

EO identification label is required to pass the smog test inspection.



Air Intake System



P/N: 54-74007 (P5R)

DPF-Back Exhaust System



P/N: 49-44064-B (Blk Tip)
49-44064-P (Pol Tip)

Side-Exit Exhaust System



P/N: 49-44065-B (Blk Tip)
49-44065-P (Pol Tip)

Intercooler Tubes



P/N: 46-20264-B (Blk)
46-20264-R (Red)

Coilovers



P/N: 501-5600-03 (Front)

Shocks



P/N: 502-0052-02 (Rear)

Rear Differential Cover



P/N: 46-70302 (Black)
46-70302-WL (w/ Oil)
Turbo Downpipe

Sprint Booster V3



P/N: 77-14008

Cold Air Intake System



P/N: 51-12832 (PDS)
54-12832 (P5R)

DP-Back Exhaust System



P/N: 49-44073-B (Blk Tip)
49-44073-P (Pol Tip)



P/N: 49-44077

To purchase any of the items above, view airflow charts, dyno graphs, photos, and video please go to aFepower.com.

Warranty

General Terms:

- aFe warrants their products to be free from manufacturer's defects due to workmanship and material.
- This warranty applies only to the original purchaser of the product and is non-transferrable.
- Proof of purchase of the aFe product is required for all warranty claims.
- Warranty is valid provided aFe instructions for installation and/or cleaning were properly followed.
- Proper maintenance with regular inspections of product is required to insure warranty coverage.
- Damage due to improper installation, abuse, unauthorized repair or alteration is not warranted.
- Incidental or consequential damages or cost, including installation and removal of part, incurred due to failure of aFe product is not covered under this warranty.
- All warranty is limited to the repair and/or replacement of the aFe part. To request Return Goods Authorization ("RGA"), email RGA@afepower.com or call (951)493-7100. Upon receipt of the RGA, you must return the product to the address provided in the RGA, freight prepaid and accompanied with a dated proof of purchase and the RGA. Upon receipt of the defective product and upon verification of proof of purchase, aFe will either repair or replace the defective product within a reasonable time, not to exceed thirty days.

Product Category	P/N Prefix	Warranty duration
Direct OE Replacement Filters	10, 11, 30, 31, 71, 73	Life of the vehicle
Racing Filters	18	1 year
Universal	21, 24, 72, TF	2 years
Air Intake Systems	50, 51, 54, 55, 75, TR, TA, TL	2 years
Exhaust Systems	49	2 years
Intercoolers & Intercooler Tubes	46-2	2 years
Intake Manifolds	46-1	2 years
Differential Cover	46-7	Life of the vehicle
Exhaust Manifolds	46	2 years
Throttle Body Spacers	46-3	2 years
Fluid Filters	44	90 days
Pre-Filters	28	2 years
Heavy Duty OE Replacement	70	2 years
PowerSports OE Replacement	81, 87	2 years
PowerSports Intake Systems	85	2 years
Tuners	77	1 year

No other warranty expressed or implied applies nor is any person or advanced FLOW engineering authorized to assume any other warranty. Some States do not allow the exclusion or limitation of incidental or consequential damages or do not allow limitations on how long an implied warranty lasts, so the above limitations or exclusions may not apply to you. This warranty gives you specific legal rights, and you may also have other rights which vary from State to State.



advanced FLOW engineering, inc.
252 Granite Street Corona, CA 92879
TEL: 951.493.7100
E-Mail: Tech@aFepower.com