



YOSHIMURA

RESEARCH&DEVELOPMENT OF AMERICA, INC.

5420 DANIELS STREET STE A, CHINO CA., 91710 · (800)634-9166 · (909)628-4722 · FACSIMILE (909)591-2198

www.yoshimura-rd.com

YOSHIMURA PERFORMANCE EXHAUST SYSTEM

**2006-2013
YAMAHA
R6**

1363072	TRC FULL SYSTEM WITH CARBON FIBER SLEEVE
1363075	TRC FULL SYSTEM WITH STAINLESS SLEEVE
1363077	TRC FULL SYSTEM WITH TITANIUM SLEEVE



THIS PRODUCT IS DESIGNED FOR USE IN CLOSED COURSE RACING AND IS NOT INTENDED FOR HIGHWAY USE.



NOTE: IN THE STATE OF CALIFORNIA, IT IS ILLEGAL TO MODIFY THE EMISSION CONTROL SYSTEM. WHICH INCLUDES THE CARBURETORS OF ANY VEHICLE.

Caution: Exhaust system can be extremely hot. Let motorcycle cool down before beginning installation. Always wear hand and eye protection and take precautionary measures to avoid injury.

Note: Read through all instructions before beginning installation.

Tools Needed:

11 and 12mm socket
3/8" ratchet and extension
10mm wrench
4mm, 5mm, and 6mm allen wrench
Torque wrench

Installation Steps:

- 1 Remove right and left side fairings.
- 2 Remove black cover that hides the exhaust valve (see Fig. 1).
- 3 Disconnect and remove the exhaust valve cables (see Fig. 2 and refer to your service manual for complete removal instructions).

NOTE: Do not unplug servo motor. Unplugging the servo motor may cause the bike to run in a power limited fail safe mode.

- 4 Remove stock muffler by removing stock muffler mount bolt and loosening stock collector clamp (see Fig. 2).
- 5 Unscrew O2 sensor (O2 sensor will be screwed into Yoshimura tailpipe after Yoshimura tailpipe is installed, see Fig. 3).
- 6 Remove lower radiator bracket. This will allow you to swing the radiator forward, easing removal of stock header and installation of Yoshimura header.
- 7 Remove stock underbelly muffler, stock header, and stock exhaust port gaskets (stock exhaust port gaskets will not be used with Yoshimura exhaust system).
- 8 The stock underbelly muffler was supported by two brackets, one on each side of the bike (see Fig. 4 and Fig. 5). Remove the left bracket (the left bracket will not be used to install the Yoshimura exhaust system). The right bracket will be used to mount the Yoshimura underbelly muffler / tailpipe.
- 9 Install Yoshimura manifolds and flanges into exhaust ports using stock header nuts (see Fig. 6 for correct flange orientation). Leave nuts loose to ease header installation.

NOTE: This Yoshimura full system is designed to be installed without exhaust port gaskets. If exhaust port gaskets are used, there may be insufficient clearance between the header and radiator.

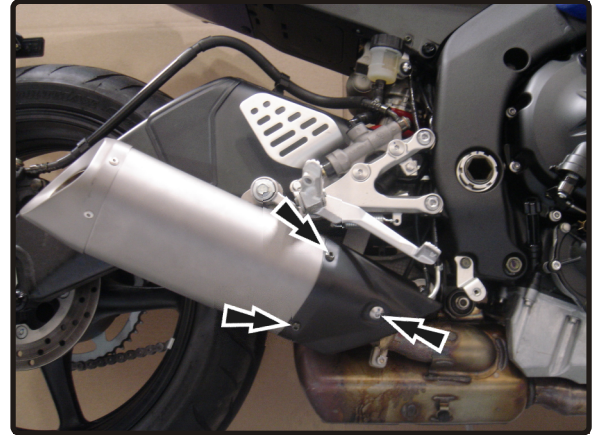


Fig. 1

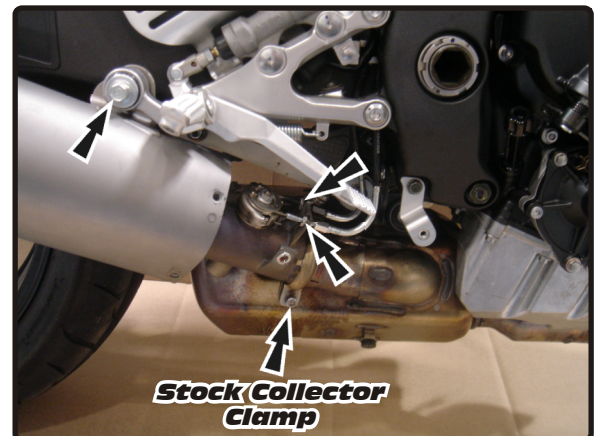


Fig. 2



Fig. 3

- 10 Install Yoshimura header from one end of the engine to the other by slipping one tube at a time onto manifolds.
- 11 Connect header to flanges using the supplied medium springs (see Fig. 4 for spring locations). Tap header lightly with a rubber mallet to make sure header is fully seated onto manifolds.
- 12 Slide Yoshimura tailpipe onto Yoshimura header. Bolt Yoshimura tailpipe to the stock right underbelly muffler bracket using the stock bolt, washer, and supplied nut. Connect Yoshimura tailpipe to Yoshimura header using the supplied small springs.
- 13 Slide Yoshimura muffler onto tailpipe and connect using the supplied small springs. Bolt muffler to the inside of the rearsset using the stock bolt, washer, and supplied nut (see Parts Diagram on page 4).
- 14 Torque header nuts to 1.0 kgf-m (7.3 lb-ft).
- 15 Torque muffler mount and tailpipe mount bolts to 2.3 kgf-m (16.5 lb-ft).
- 16 Screw O2 sensor into Yoshimura tailpipe and torque O2 sensor to 4.75 kgf-m (34.3 lb-ft).
- 17 Remove rubber grommet from underneath the stock center muffler assembly and install into bracket on Yoshimura center muffler assembly. (See Fig. 7)
- 17 Reinstall the lower radiator bracket.
- 18 Reinstall right and left side fairings.
- 19 It is recommended that the exhaust system be wiped down with rubbing alcohol to remove oil and fingerprints. This will help prevent tarnishing of the finish after the exhaust is heated up.
- 20 Check for proper clearance between new exhaust system and motorcycle. (i.e. Swing-arm, body work, etc.) If any problem is found, please carefully follow through the installation steps again. If problem still persists, please call Yoshimura technical department at (800)634-9166 / in CA (909)628-4722.

Note: After starting motorcycle, it is normal for new exhaust system to smoke until oil residue burns off.

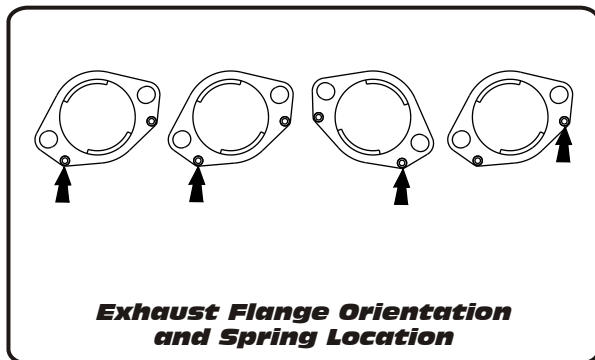


Fig. 4



Fig. 5

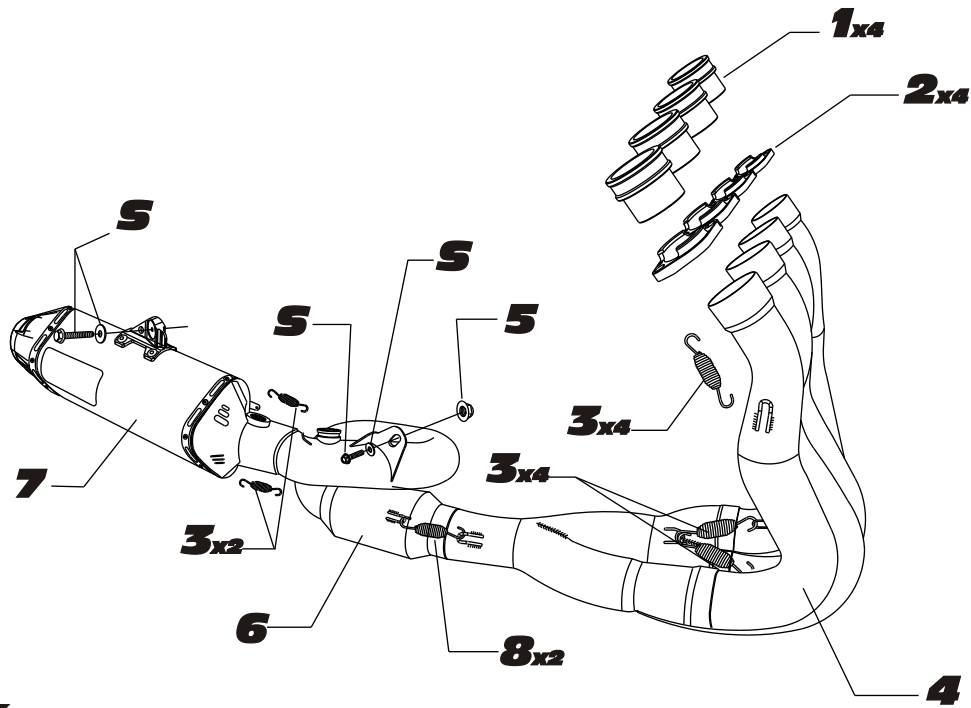


Fig. 6



Fig. 7

#136307(2,5,7)



S=Stock

Parts Diagram

NO.	DESCRIPTION	QTY	PART #
1	Yoshimura Stainless Steel Manifold	4	YZ616SDM
2	Yoshimura Aluminum Flange	4	YZ616SDR-01
3	Medium Race Spring	10	RACE-SPS-1
4	Yoshimura Header	1	1363-404
5	8mm Flanged Nut	1	8MMNUT
6	Yoshimura Tailpipe	1	1363085-CMA
7	Yoshimura TRC Muffler with Carbon Fiber Sleeve with Stainless Steel Sleeve with Titanium Sleeve	1	1363072-RMA 1363075-RMA 1363077-RMA
8	Short Race Spring	2	RACE-SPX-1
**	Yoshimura Decal Sheet	1	17029
**	Spring Puller Tool	1	ST-200