



Installation Instructions 69-1231

WARNING TO END USER, INSTALLER AND SELLER OF THIS PART!

By installing this part you are accepting full responsibility and liability for proper wheel and tire fitment after installation.

It is the installer's responsibility to properly align the vehicle before use. Using a wheel tire fitment combination that results in any contact from the tire and/or wheels with the new installed ReadyLIFT® upper control arm or inner fenders at any point including full steering lock will void the ReadyLIFT® warranty and may result in failure of the ball joints. **Failure to do so may cause damage to your vehicle and/or injury or death to the driver and passengers.**

IF YOUR ReadyLIFT® PRODUCT IS MISSING A PART OR HAS A DAMAGED PART, PLEASE CONTACT CUSTOMER SERVICE DIRECTLY.

A NEW REPLACEMENT PART WILL BE SENT TO YOU IMMEDIATELY

(877) 759-9991 MON-FRI 7AM-5PM PST EMAIL: INFO@ReadyLIFT.COM WWW: ReadyLIFT.COM

****Please retain this document in your vehicle at all times****

Limited Lifetime Warranty

This unique product warranty proves our commitment to the quality and reliability of every product that ReadyLIFT® manufactures. The ReadyLIFT® product warranty only extends to the original purchaser of any ReadyLIFT® product, if it breaks, we will give you a new part. Warranty does not apply to discontinued parts. Our Limited Lifetime Warranty excludes the following ReadyLIFT® items; bushings, bump stops, ball joints, tie rod ends, heims joints and shock absorbers. These parts are subject to wear and are not considered defective when worn. They are warranted for 12 months from the date of purchase for defects in workmanship. **This product warranty is voided if the vehicle is not aligned after kit installation and proper maintenance is routinely done.**

Product purchased directly from ReadyLIFT® has a 30 day return policy on uninstalled products from the date of purchase. Uninstalled product returns must be in the original ReadyLIFT® packaging. Please call **(877)759-9991** to get an RGA# for any return. Customer is responsible for shipping costs back to ReadyLIFT®. **Returns without RGA# will be refused.** Contact ReadyLIFT® directly about any potentially defective parts prior to removal from vehicle. If the part in question is deemed warrantable an RGA# will be assigned and can be returned for repair or replacement. Replacement parts required prior to warranty claim completion must be purchased. Upon receipt and verification of deemed warranty parts claim, a credit or refund can then be processed to complete warranty claim transaction.

ReadyLIFT® products are **NOT** intended for off-road abuse. Any damage or failure as a result from off-road abuse voids the warranty of the ReadyLIFT® product. ReadyLIFT® is **NOT** responsible for any subsequent damages to any related vehicle parts due to misuse, abuse, improper installation, or lack of maintenance. Furthermore, ReadyLIFT® reserves the right to change, modify or cancel this warranty without prior notice.

www.ReadyLIFT.com - Phone: (877) 759-9991



Installation Instructions 69-1231

**Please read Instructions thoroughly and completely before beginning installation.
Installation by a certified mechanic is recommended.**

ReadyLIFT® Suspension Inc. is NOT responsible for any damage or failure resulting from improper installation.

Safety Warning: Suspension systems or components that enhance the on and off-road performance of your vehicle may cause it to handle differently than it did from the factory. Extreme care must be used to prevent loss of control or vehicle rollover during abrupt maneuvers. Always operate your vehicle at reduced speeds to ensure your ability to control your vehicle under all driving conditions. Failure to drive safely may result in serious injury or death to driver and passengers. Driver and passengers must ALWAYS wear your seat belts, avoid quick sharp turns and other sudden maneuvers. ReadyLIFT® Suspension Inc. does not recommend the combined use of suspension lifts, body lifts, or other lifting devices. You should never operate your vehicle under the influence of alcohol or drugs. Constant maintenance is required to keep your vehicle safe. Thoroughly inspect your vehicle before and after every off-road use.

Installation Warning: All steps and procedures described in these instructions were performed while the vehicle was properly supported on a two post vehicle lift with safety jacks. Use caution during all disassembly and assembly steps to insure suspension components are not over extended causing damage to any vehicle components and parts included in this kit. Included instructions are guidelines only for recommended procedures and are not meant to be definitive. Installer is responsible to insure a safe and controllable vehicle after performing modifications.

ReadyLIFT® Suspension Inc. recommends the use of an OE Service Manual for model/year of vehicle when disassembly and assembly of factory and related components. Unless otherwise specified, tighten all bolts and fasteners to standard torque specifications listed within the OE Service Manual, or as referenced in the torque specification list provided in these instructions.

Suspension components that use rubber or urethane bushings should be tightened with the vehicle at normal ride height. This will prevent premature wear or failure of the bushing and maintain ride comfort. Larger tire and wheel combinations may increase leverage on suspension, steering, and related components. Due to payload options and initial ride height variances, the amount of lift is a base figure. Final ride height dimensions may vary in accordance to original vehicle ride height. Always measure the vehicle ride height prior to beginning installation.

Vehicle ride height chart

Driver Front:	Driver Rear:	Pass. Front:	Pass. Rear:								
<u>Stock</u> <u>Lifted</u>	<u>Stock</u> <u>Lifted</u>	<u>Stock</u> <u>Lifted</u>	<u>Stock</u> <u>Lifted</u>								
<table border="1" style="width: 100%; height: 40px;"><tr><td style="width: 50%;"></td><td style="width: 50%;"></td></tr></table>			<table border="1" style="width: 100%; height: 40px;"><tr><td style="width: 50%;"></td><td style="width: 50%;"></td></tr></table>			<table border="1" style="width: 100%; height: 40px;"><tr><td style="width: 50%;"></td><td style="width: 50%;"></td></tr></table>			<table border="1" style="width: 100%; height: 40px;"><tr><td style="width: 50%;"></td><td style="width: 50%;"></td></tr></table>		

Bolt Size Millimeters	Torque Specs in FT/LB	
	Metric Grade 8.8	Metric Grade 10.9
6mm	6	8
8mm	16	22
10mm	40	45
12mm	54	70
14mm	89	117
16mm	132	175
18mm	182	236

Bolt Size SAE	Torque Specs in FT/LB	
	Grade 5	Grade 8
5/16	15	20
3/8	30	35
7/16	45	60
1/2	65	90
9/16	95	130
5/8	135	175
3/4	185	280



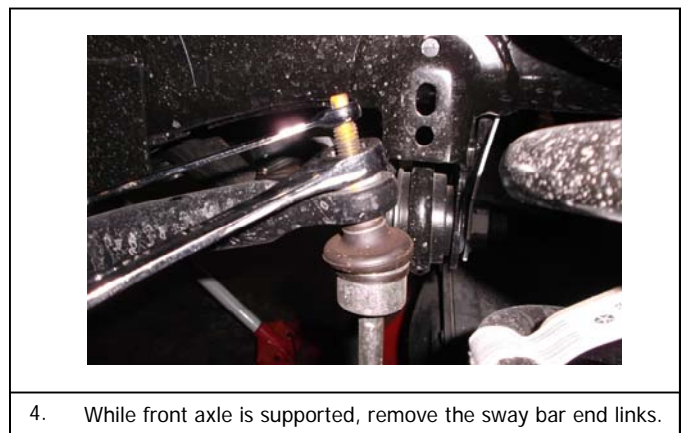
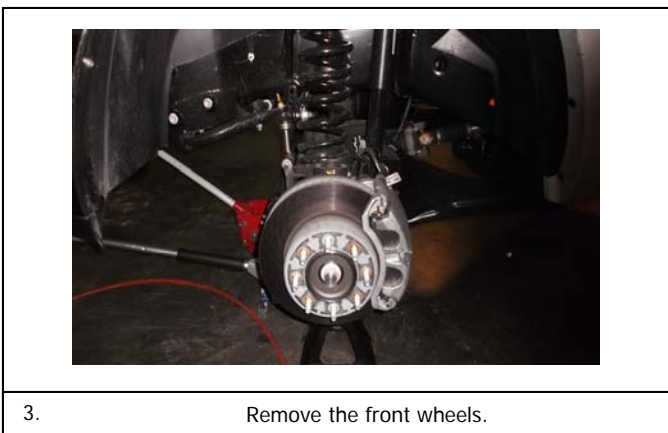
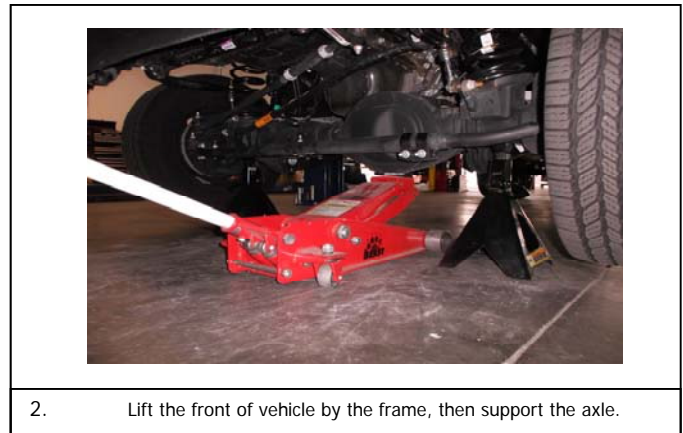
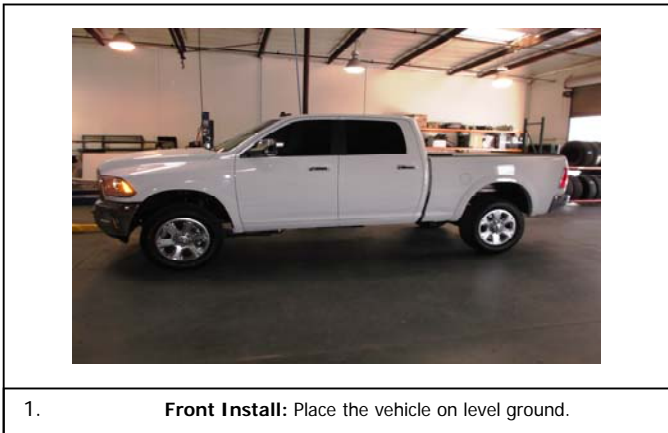
Installation Instructions 69-1231

Bill of Materials

Description	Qty
3.0" Front Lift Spacer	2
Front Bumpstop	2
Shock Extension Bracket	2
1.0" Rear Lift Spacer	2
Bolt, 9/16"-18 x 3"	2
Bolt, M8-1.25 x 25mm	2

Description	Qty
Nut, 9/16"-18 Nyloc	2
Spacer, 6mm	2
Washer, 9/16" Flat	2
Washer, 9/16" Lock	2
Washer, M8 Flat Zinc	2

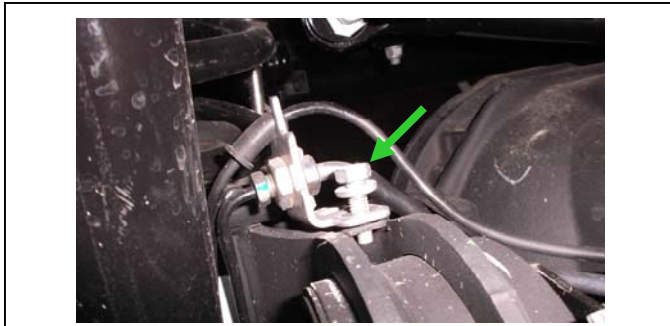
The Bill of Materials represents the component contents of this kit. All hardware is of the highest grade and the components are manufactured to exacting specifications for a trouble free installation. Use the attached torque specifications chart when final tightening of the nut and bolts are done.



READYLIFT[®]

SUSPENSIONS

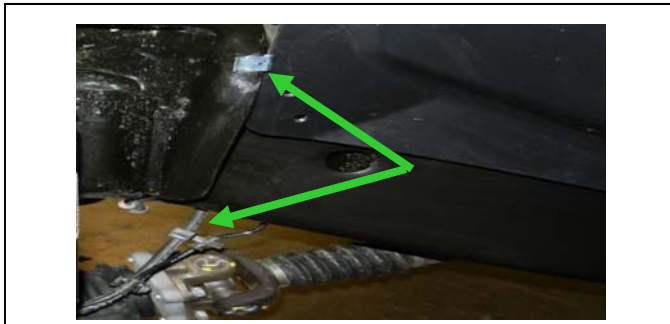
Installation Instructions 69-1231



5. Unbolt the brake lines front the inner mount on the axle.



6. Unhook the wheel speed sensor wire line from the mount on the passengers side of the axle.



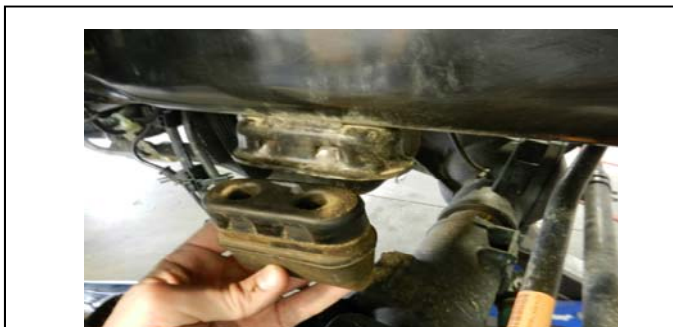
7. Unhook the differential breather tube from inside the frame.



8. Unbolt the front shocks from the axle. Leave the tops bolted.



9. Lower the axle down to allow the front coil springs to be removed.



10. Remove the factory bump stops from the frame.



11. Install the ReadyLift 3" bump stops.



12. On OE spring isolator, cut off the rubber locating tab.

READYLIFT[®]

SUSPENSIONS

Installation Instructions 69-1231



13. Install the OE spring isolator and the strut spacer onto the coil spring. Lower the axle further to allow spring installation.



14. Install the assembly in to the vehicle. **Note: Coil Spacer should be orientated so the spring is offset to the front of the coil pocket and to the inside of the frame to correct "Spring Bowing"**



15. Raise the axle to weight the springs.



16. Install the shock extensions.



17. Install the brake line spacers using the longer bolts provided.



18. Reinstall the sway bar end links.



19. Reinstall the front wheels and put the vehicle on the ground.



20. Torque the front wheels to factory specs.

READYLIFT[®]

SUSPENSIONS

Installation Instructions 69-1231



21. **Rear Installation:** Place the vehicle on level ground.



22. Lift the vehicle by the frame, support the axle, and remove the wheels.



23. Unbolt the sway bar end links.



24. With the axle supported, unbolt the shocks from the axle.



25. Lower the axle until the springs are loose enough to remove.



26. Place the coil spacer under the lower spring isolator.



27. Reinstall the coil spring with the spacer.



28. Jack the axle back up to weight the springs then install the shocks.



Installation Instructions 69-1231



29. Reinstall the sway bar end links.



30. Reinstall the rear wheels.



31. Lower the vehicle to the ground and torque the lug nuts.

Note: Double check all worked performed on the vehicle to ensure correct installation.

Note: The vehicle must be aligned immediately after the installation is complete.

32.

Final Checks & Adjustments

Post Installation Warnings: Once the vehicle is lowered to the ground, check all parts which have rubber or urethane components to insure proper torque. Torque wheels to factory specs. Move vehicle backwards and forwards a short distance to allow suspension components to adjust. Turn the front wheels completely left then right and verify adequate tire, wheel, brake line, and ABS wire clearance. Test and inspect steering, brake and suspension components for tightness and proper operation. Inspect brakes hoses and ABS lines for adequate slack at full extension. Failure to perform the post inspection checks may result in vehicle component damage and/or personal injury or death to driver and/or passengers and void your warranty. Test drive vehicle and re-check the torque of all fasteners and re-torque wheels on vehicle.

Vehicle Handling Warning: Vehicles with larger tires and wheels will handle differently than stock vehicles. Take time to familiarize yourself with the handling of your vehicle.

Wheel Alignment/Headlamp Adjustment:

It is **mandatory** to have a proper and professional wheel alignment performed by a certified alignment technician. Align the vehicle to factory specifications. It is **mandatory** that your vehicle alignment be checked after any off-road driving. In addition to your vehicle alignment, for your safety and others, it is necessary to check and adjust your vehicle headlamps for proper aim and alignment.

Vehicle Re-Torque and Safety Inspection:

Upon completion of all services and adjustments performed on your vehicle, and within 50 miles of driving, check to ensure all fasteners and hardware are properly torqued to specification as noted in the vehicles factory service manual or the torque chart included.