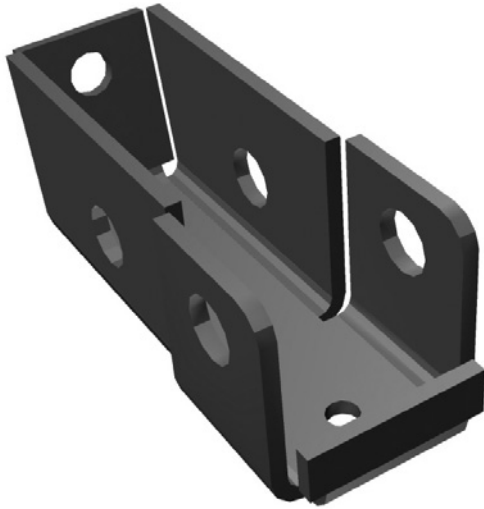


JKS[®]

Installation Instructions



Product: **Shock Extensions**

Part Number: **PN 2944**

Application: **Jeep Wrangler TJ, 1997-06**

Welcome

CONGRATULATIONS on purchasing new Shock Extensions from JKS Manufacturing. We are committed to providing you with the best products available and your satisfaction is our first priority.

PLEASE READ these Installation Instructions carefully, and save them for future reference, as they contain important installation and maintenance information.

Important

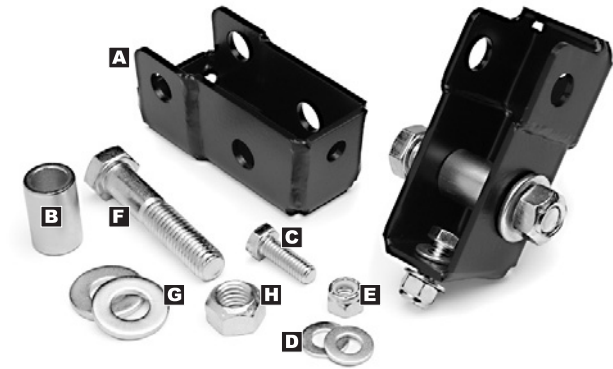
INSTALLATION OF SHOCK EXTENSIONS relocates the rear lower shock mounts 1-3/4" away from the axle housing for additional clearance.

Tools Required

- Metric/Standard Socket Wrench Set
- 1/2" Open End Wrench
- Torque Wrench
- Factory Service Manual (recommended)

** Asterisk denotes tools that are not required for some applications. Thoroughly read instructions first to determine which tools will be required for your application.*

Parts



	DESCRIPTION	PART #	QTY
A	Extension Bracket	PN 70606	2
B	Steel Sleeve	PN 70607	2
C	5/16" x 7/8" Bolt	PN 13054	2
D	5/16" SAE Flat Washer	PN 33080	4
E	5/16" Nylock Nut	PN 37021	2
F	1/2" x 2-1/2" Bolt	PN 13213	2
G	1/2" SAE Flat Washer	PN 33086	4
H	1/2" Ovalok Nut	PN 37268	2

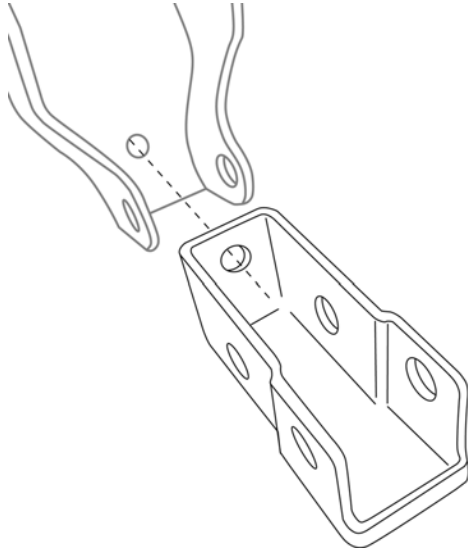
Installation

❑ 1. REMOVE SHOCK ABSORBERS

- Remove the nut and bolt that secures rear shock absorber to axle. Retain hardware for re-installation.
- Remove shock absorber from lower mount and move it out of the way.

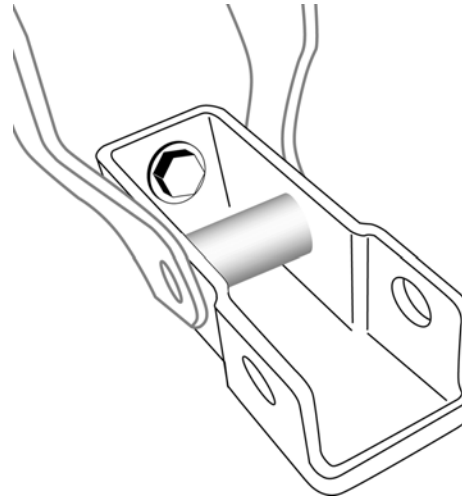
❑ 2. INSTALL EXTENSION BRACKET

- Slide narrow end of Shock Extension (A) into factory lower shock mount on axle.



- Align small hole in bracket with small hole on factory shock mount and insert a 5/16" x 7/8" Bolt (C) with 5/16" Flat Washer (D).
HINT: Insert bolt from bracket side so that threaded end points forward.
- Install a 5/16" Nylock Nut (E) with another 5/16" Flat Washer (D) onto bolt, but do not tighten yet.

- Slide the supplied Steel Sleeve (B) into Extension Bracket (A) and align with original shock mounting holes.



- Insert 1/2" x 2-1/2" Bolt (F) with 1/2" Flat Washer (G) into the original shock mounting hole and through Extension Bracket (A) and Steel Sleeve (B). **HINT:** Sleeve prevents bracket from collapsing when 1/2" bolt is tightened.
- Secure bolt to shock mount by installing a 1/2" Ovalok Nut (H) with 1/2" Flat Washer (G) on other end.
- Using a torque wrench, tighten the 1/2" Bolt (F) to 65 ft-lbs. Then tighten the 5/16" Bolt (C) to 35 ft-lbs.

❑ 3. RE-INSTALL SHOCK ABSORBERS

- Slide the shock absorber into wide end of Extension Bracket (A) and secure with the original shock mounting hardware.
- Using a torque wrench, tighten original shock mounting bolt to 65 ft-lbs.

© 2009 JKS Manufacturing, Inc & Aftermarketing, LLC
Revision Date 12/31/2009