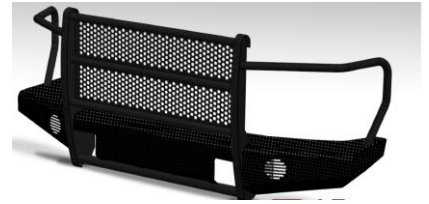




# Replacement Bumper

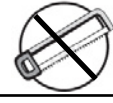
Part No. FX3004



Fits: 2011 - Current Chevrolet Silverado 2500 / 3500 HD



60-120 min



Cutting Not Required



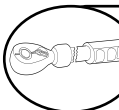
Drilling Not Required



REMOVE CONTENTS FROM BOX. VERIFY ALL PARTS ARE PRESENT.



READ INSTRUCTIONS CAREFULLY BEFORE STARTING INSTALLATION.



DO NOT OVER TORQUE. STANDARD OPERATING LOAD FOR TIGHTEN BODY MOUNT NUTS & BOLTS VARIES FROM 45 TO 65 FOOT POUND.

### PARTS LIST:

Qty	Part Description	Qty	Part Description
1	Replacement Bumper	1	

### Tools Required

Socket Wrench With Extension	3/4" Socket
18mm Socket	3/4" Open End Wrench
7/32" Socket	7/16" Open End Wrench
Phillips Screwdriver	18mm Open End Wrench
10mm Socket	15mm Socket
21mm Deep Socket	Hammer

### INSTALLATION PROCEDURE:

#### Vehicle Preparation

1. Detach the splash mat from the body by removing the 3 plastic push clips from the center splash guard and outer cooling supports.
2. Remove the two screws per side (10mm) connecting the plastic inner fender to the bumper.

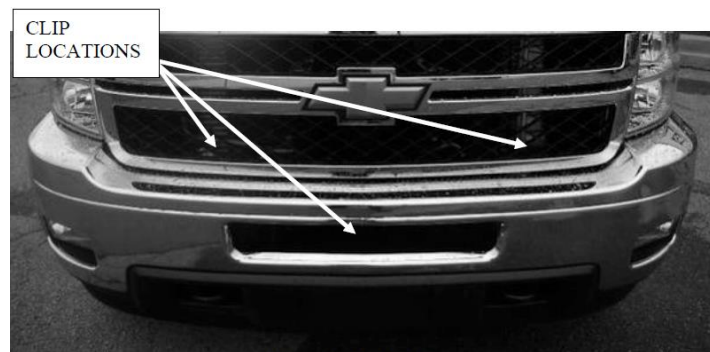


Figure 1 - Clip Locations

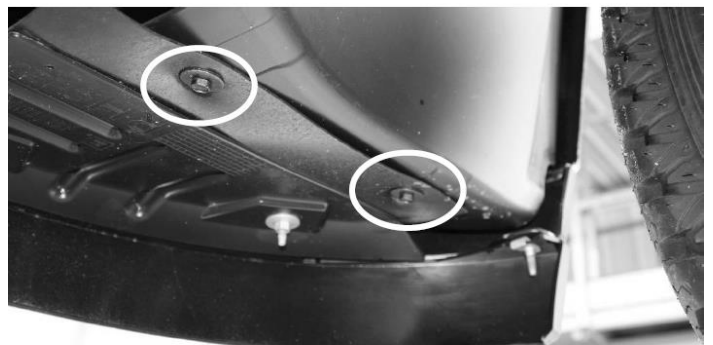


Figure 2 - Screw Locations

3. Disconnect the wiring harness from both fog lights.
4. Remove the two screws connecting the outer bumper support bar to the body mount bracket (15mm). Loosen the screw connecting the outer bumper support bar to the bumper (15mm), allowing it to rotate downward



Figure 3 – Outer Bumper Support Screws

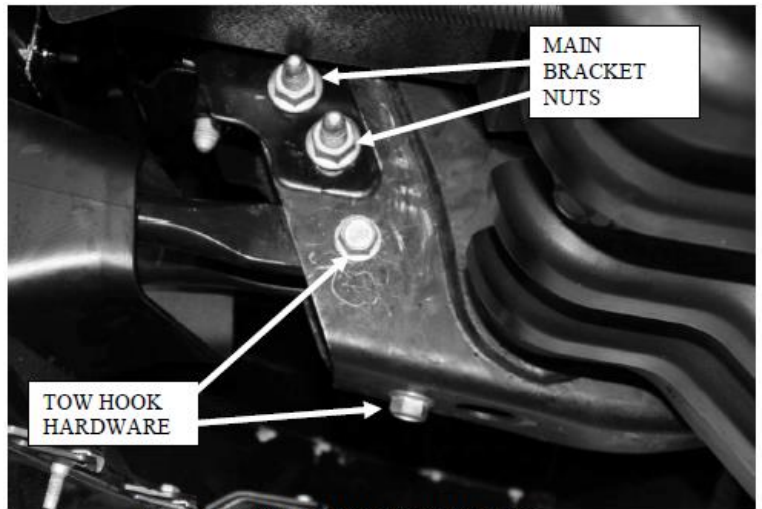
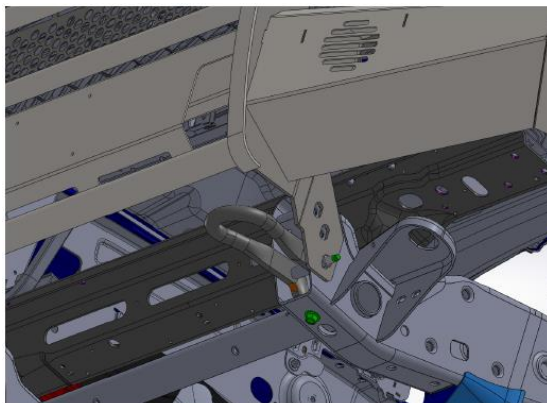


Figure 4 - Tow Hook and Main Bracket Hardware

5. Remove the Front Tow Hook Bolt from each side. DO Not Discard.
6. Remove the two main bumper bracket nuts per side. DO NOT REMOVE THE BOLT STRIPS WITHOUT SUPPORTING THE BUMPER With the weight of the bumper supported,
7. Remove the stud plates and pull the bumper forward away from the truck. Save stud plates and nuts for reuse.

### Bumper Installation

1. Remove the Bumper from the shipping carton. Lay all items out on a blanket to prevent damage to the powder coating.
2. **OPTIONAL:** If you wish to retain the stock fog lamps, remove the lights from the stock bumper and reinstall using OEM hardware in the provided brackets behind the protective mesh. It may be necessary to remove the adjuster screw prior to installation. With the fog light clipped in the bracket, reinstall the adjuster screw to clamp the light in place.
3. Lift bumper and align mounting slots with the OEM Bumper Mounting holes in the Frame. Install OEM Hardware previously removed but do not tighten fully. Repeat for other side. It may be helpful to support bumper with a floor jack(s) during install.



4. Install the Front Tow Hook Bolt through the Frame, Tow Hook, and the new bumper mount.
5. Adjust the bumper to achieve good visual alignment.
6. Tighten all fasteners; beginning with frame mounts. Then tighten all mount to- bumper fasteners.
7. Trim inner-fender liners to match bumper if desired.

## PRODUCT CARE

- Periodically check the product to ensure all fasteners are tight and components are intact.
- Regular waxing is recommended to protect the finish of the product.
- **Use ONLY Non-Abrasive automotive wax.** Use of any soap, polish or wax that contains an abrasive is detrimental and can scratch the finish leading to corrosion.
- Aluminum polish may be used to polish small scratches and scuffs for **Stainless Steel finish.**
- Mild soap may be used to clean the product for both **Stainless Steel and Black finish.**

## FAQ's

**1. Hardware's are not of correct size.**

*In GMC / Chevrolet truck model 2006 & up, customer needs to reuse the factory body bolts to install the bracket. If your vehicle is not GMC / Chevrolet 2006 & up, ensure that holes are not partially covered with any plastic grommet or rust? If it is, remove the plastic grommet & rust from the thread holes & re-try the installation.*

**2. Mounting Bracket are not getting Installed properly.**

*In some cases Illustration images shown in Installation manual may not be the exactly same as per actual vehicle images ,also if Driver / Passenger side mounting brackets are very identical in the design, suggest referring Parts Identification guide to avoid fitment issue.*

**3. Products are thumping / rattling after installation.**

*Ensure that all required mounting brackets / hardware's are installed & tighten correctly. Suggest using white lithium / regular grease between the metal to metal contact surfaces.*

**4. Side Bar is not aligning with vehicle / Step Pads are not aligning with vehicle doors.**

*Side bar may be interchanged or mounting brackets are not installed at the correct position in the vehicle. Refer Parts identification guide.*

**5. Missing / Excess Hardware.**

*Recheck hardware count as per the part list.*

**6. Product not installing properly.**

*Ensure make model year, cab length and bed size of your vehicle is listed in the application. All installation steps are followed correctly.*