



YOSHIMURA

RESEARCH&DEVELOPMENT OF AMERICA, INC.

5420 DANIELS STREET STE A, CHINO CA., 91710 · (800)634-9166 · (909)628-4722 · FACSIMILE (909)591-2198

www.yoshimura-rd.com

RS 2 PERFORMANCE EXHAUST SYSTEM

SUZUKI
2004-2010
KINGQUAD
500/700/750

2110610	STAINLESS STEEL COMPETITION SLIP-ON SYSTEM
----------------	--



THIS PRODUCT IS DESIGNED FOR USE IN CLOSED
COURSE RACING AND IS NOT INTENDED FOR ANY



NOTE: IN THE STATE OF CALIFORNIA, IT IS ILLEGAL TO MODIFY THE EMISSION CONTROL SYSTEM. WHICH INCLUDES THE FUEL INJECTION OF ANY VEHICLE.

Caution: Exhaust system can be extremely hot. Let motorcycle cool down before beginning installation. Always wear hand and eye protection and take precautionary measures to avoid injury.

Note: Read through all instructions before beginning installation.

Tools Needed:

10mm, 11mm Deep Socket
6mm Allen Socket
Ratchet Wrench and Extension
Torque Wrench

Installation Steps:

- 1 Loosen stock header to tailpipe collector clamp. (See Fig. 1)
- 2 Unbolt and remove stock muffler and heatshield. (See Fig. 2)
- 3 Install Yoshimura heat shield using supplied bolts and u-nuts. (See parts diagram on page 3)

- 4 Place supplied collector clamp onto Yoshimura tailpipe. Install tailpipe with muffler onto header.

Note: For Kingquad 500 only, install supplied gasket before tailpipe installation. For other models, remove gasket from header.

- 5 Mount Yoshimura muffler to stock mounting location using supplied hardware. See Fig. 3 for correct installation sequence.
- 6 Torque muffler mount bolts to 2.5 kg-m (18 lb-ft).
- 7 Torque collector clamp to 1.25 kg-m (9 lb-ft)
- 8 It is recommended that the exhaust system be wiped down with rubbing alcohol to remove oil and fingerprints. This will help prevent tarnishing of the finish after the exhaust is heated up.
- 9 Check for proper clearance between ATV chassis, swing arm, bodywork and new exhaust. If any problem is found, please carefully follow through the installation steps again. If problem still persists, please call Yoshimura technical department at (800)634-9166, in CA (909)628-4722.

NOTE: After starting ATV, it is normal for new exhaust system and muffler to emit smoke until oil residue burns off.

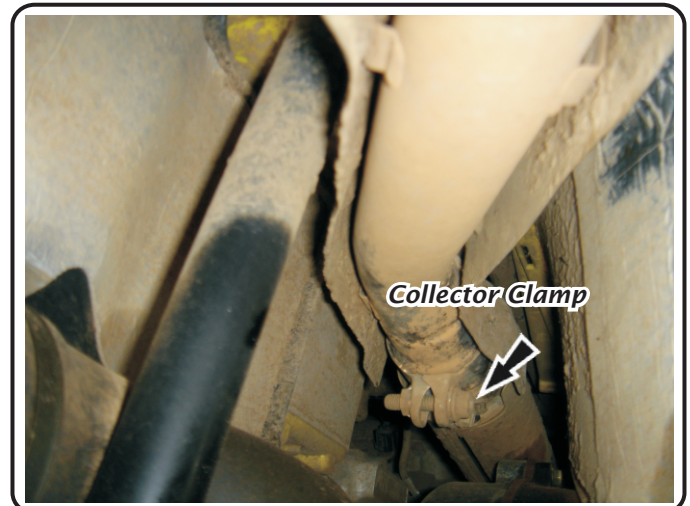


Fig. 1

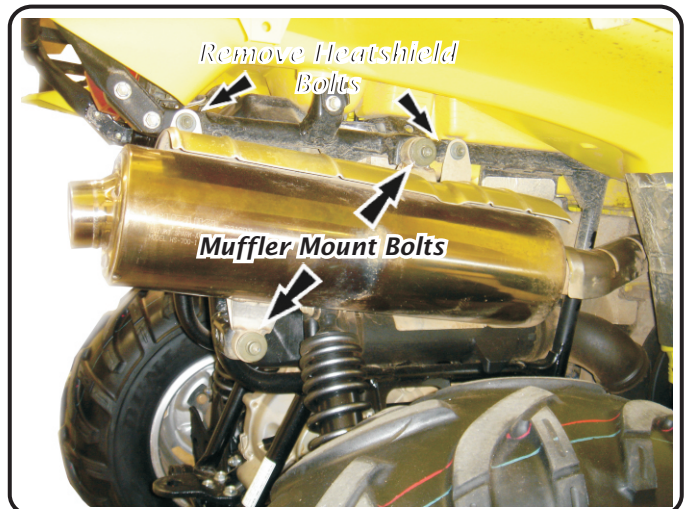


Fig. 2

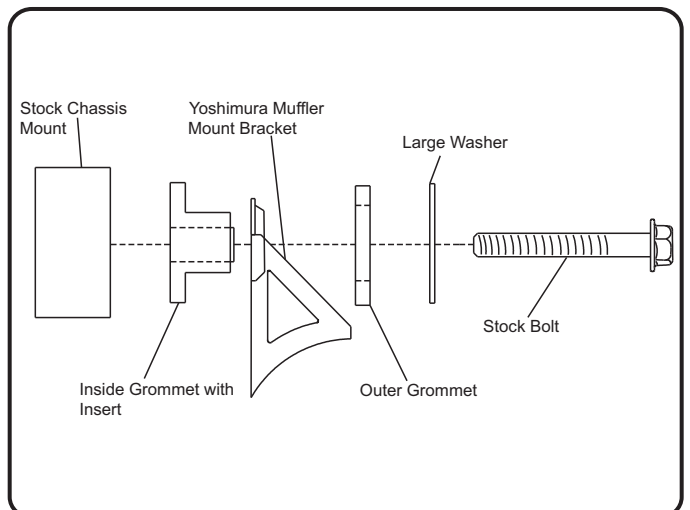
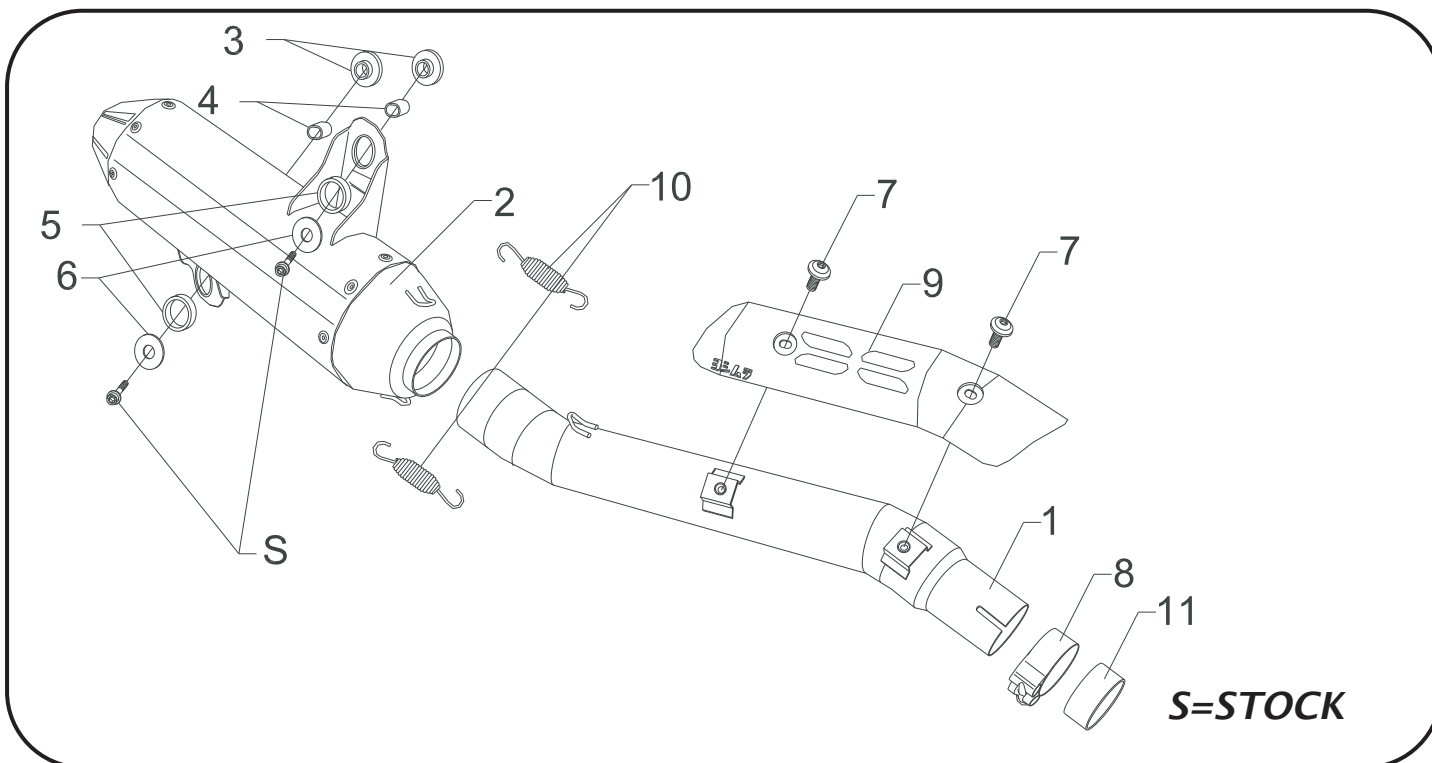


Fig. 3

#2110610


Parts Diagram

NO.	DESCRIPTION	QTY	PART #
1	Yoshimura Tailpipe	1	2110-152-B
2	Yoshimura Muffler	1	2110610-RMA
3	Inner Rubber Grommet	2	Z1031
4	Aluminum Spacer	2	Z1031-SP
5	Outer Rubber Grommet	2	Z1030
6	8mm x 38mm Washer	2	8X38WSH
7	6mm x 10mm Button Head Bolt	2	M6X10BHS
8	Collector Clamp	1	22059
9	Yoshimura Heat Shield	1	2110-HS-A
10	Medium Race Spring	2	RACE-SPS-1
11	Exhaust Gasket (For use with Kingquad 500 only)	1	16-5574
**	Offroad Endcap Plug	1	347PLUG
**	Spring Puller	1	ST-200
**	Yoshimura Vinyl Sticker	1	17029

Jetting Recommendations:

None, use stock jetting.



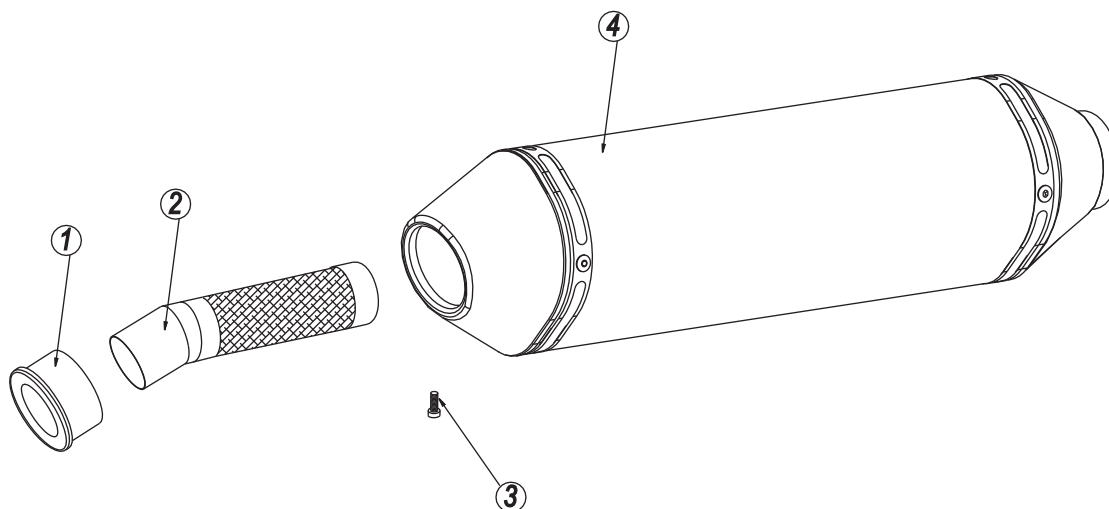
YOSHIMURA

RESEARCH & DEVELOPMENT OF AMERICA, INC.

5420 DANIELS STREET SUITE A, CHINO, CA 91710 · (800)634-9166 · (909)628-4722 · FACSIMILE (909)591-2198

www.yoshimura-rd.com

Spark Arrester Cleaning Information



Parts Diagram

Caution: *Muffler can be extremely hot. Let muffler cool down before removing spark arrester.*

Note: *Read through all instructions before beginning disassembly.*

Tools Needed:

4mm Allen Key
Wire Brush
Pair of Gloves
Safety Glasses

Cleaning Steps:

- 1 Using a 4mm Allen key, remove the bolt that secures the aluminum ring and spark arrester to the muffler (see Parts Diagram for location).
- 2 Remove the spark arrester from the muffler.

NO.	DESCRIPTION	QTY
1	Aluminum Ring	1
2	Spark Arrester	1
3	Spark Arrester Securing Bolt	1
4	Muffler Assembly	1

- 3 Using a wire brush, remove carbon deposits from spark arrester screen. Inspect the screen for excessive wear or damage. If spark arrester is excessively worn or damaged, the spark arrester must be replaced. Cleaning and inspection should be performed at the same time as muffler repacking. Repacking is recommended every 8-10 hours of riding or 2 motos, whichever comes first.

CAUTION: Gloves and safety glasses should be worn while cleaning spark arrester.

- 4 Re-install spark arrester and aluminum ring. Torque the spark arrester securing bolt to 1.0 kg-m (7.3 lb-ft).

NOTE: It is recommended that a low strength "Loc-tite" is used on the spark arrester securing bolt.