



YOSHIMURA

RESEARCH & DEVELOPMENT OF AMERICA, INC.

5420 DANIELS STREET STE A, CHINO CA, 91710 · (800)634-9166 · (909)628-4722 · FACSIMILE (909)591-2198

www.yoshimura-rd.com

RS-2 PERFORMANCE EXHAUST SYSTEM

YAMAHA
2006-2009
RAPTOR 700

2388513

STAINLESS STEEL COMPETITION FULL SYSTEM WITH ALUMINUM SLEEVE

NOTE: THIS SYSTEM IS DESIGNED FOR USE IN CLOSED COURSE COMPETITION AND IS NOT INTENDED FOR ANY OTHER USE.



THIS PRODUCT IS DESIGNED FOR USE IN CLOSED COURSE RACING AND IS NOT INTENDED FOR ANY OTHER USE.



CAUTION: The muffler packing on this system **MUST** be replaced every 6-8 hours of use, or after each moto. Failure to follow recommended muffler re-packing interval can cause muffler damage and may void the warranty.



NOTE: IN THE STATE OF CALIFORNIA, IT IS ILLEGAL TO MODIFY THE EMISSION CONTROL SYSTEM, WHICH INCLUDES THE CARBURETORS OF ANY VEHICLE.

Caution: Exhaust system can be extremely hot. Let motorcycle cool down before beginning installation.

Note: Read through all instructions before beginning installation.

Tools Needed:

11mm and 12mm Sockets
Ratchet and Extension
6mm Allen Wrench
#3 Phillips Screwdriver
Torque Wrench

Installation Steps:

- 1 Unbolt and remove stock muffler, header, and heatshields (see Fig. 1, 2, and 3 for bolt locations).
- 2 Remove stock exhaust port gaskets and replace with new stock Yamaha exhaust port gaskets (not supplied).
- 3 Install stock front heatshield and supplied header clamp onto Yoshimura header (see Parts Diagram on page 4).

NOTE: Holes in stock heatshield are slotted to allow adjustability. Position heatshield for maximum clearance between stock heatshield and frame before tightening the heatshield mounting bolts.

- 4 Install Yoshimura header using stock nuts and torque stock nuts and supplied header clamp to 1.25 kg-m (9 lb-ft).
- 5 Install supplied rubber grommets into aluminum muffler mounting brackets. Install aluminum inserts into rubber grommets (make sure shoulder of aluminum insert faces toward the frame, see Fig. 4).

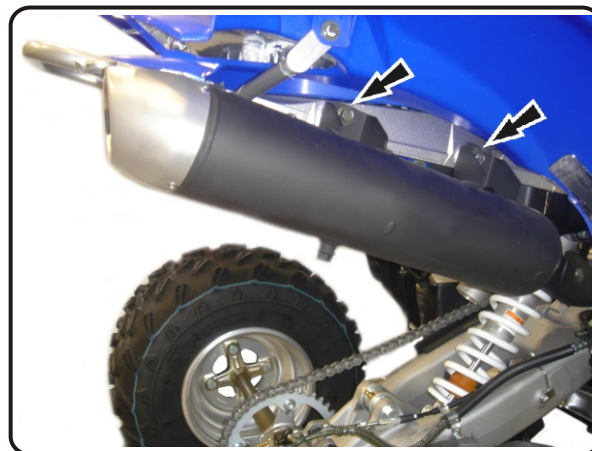


Fig. 1

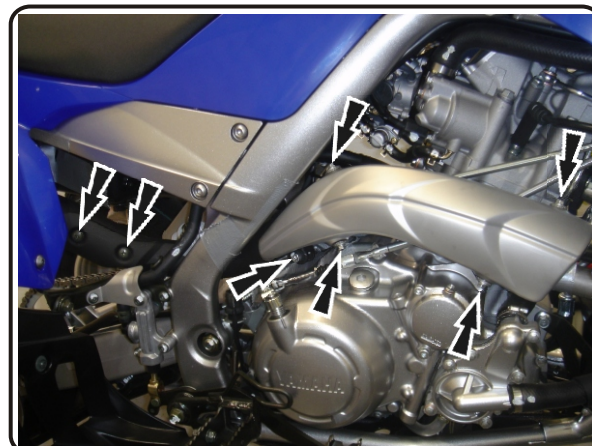


Fig. 2

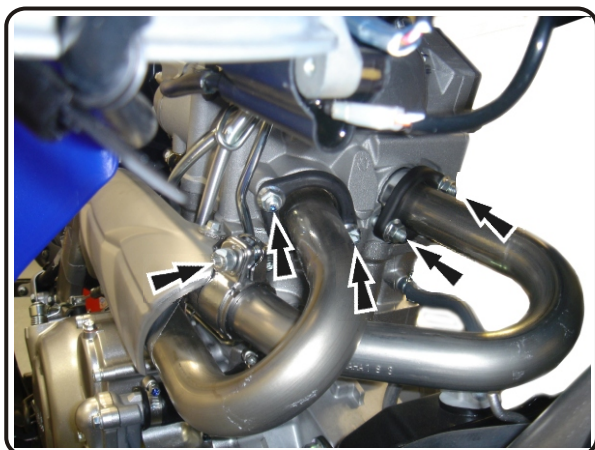


Fig. 3

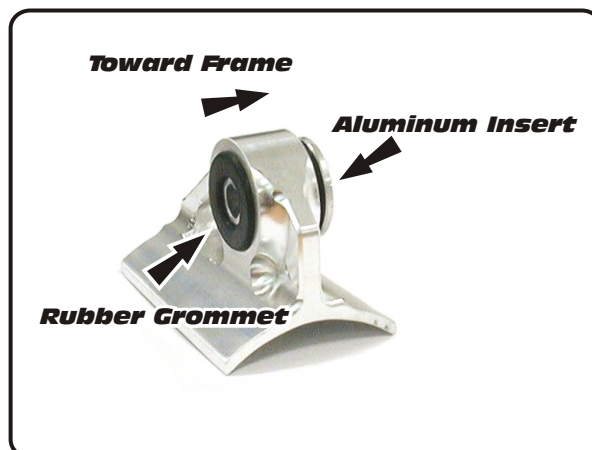
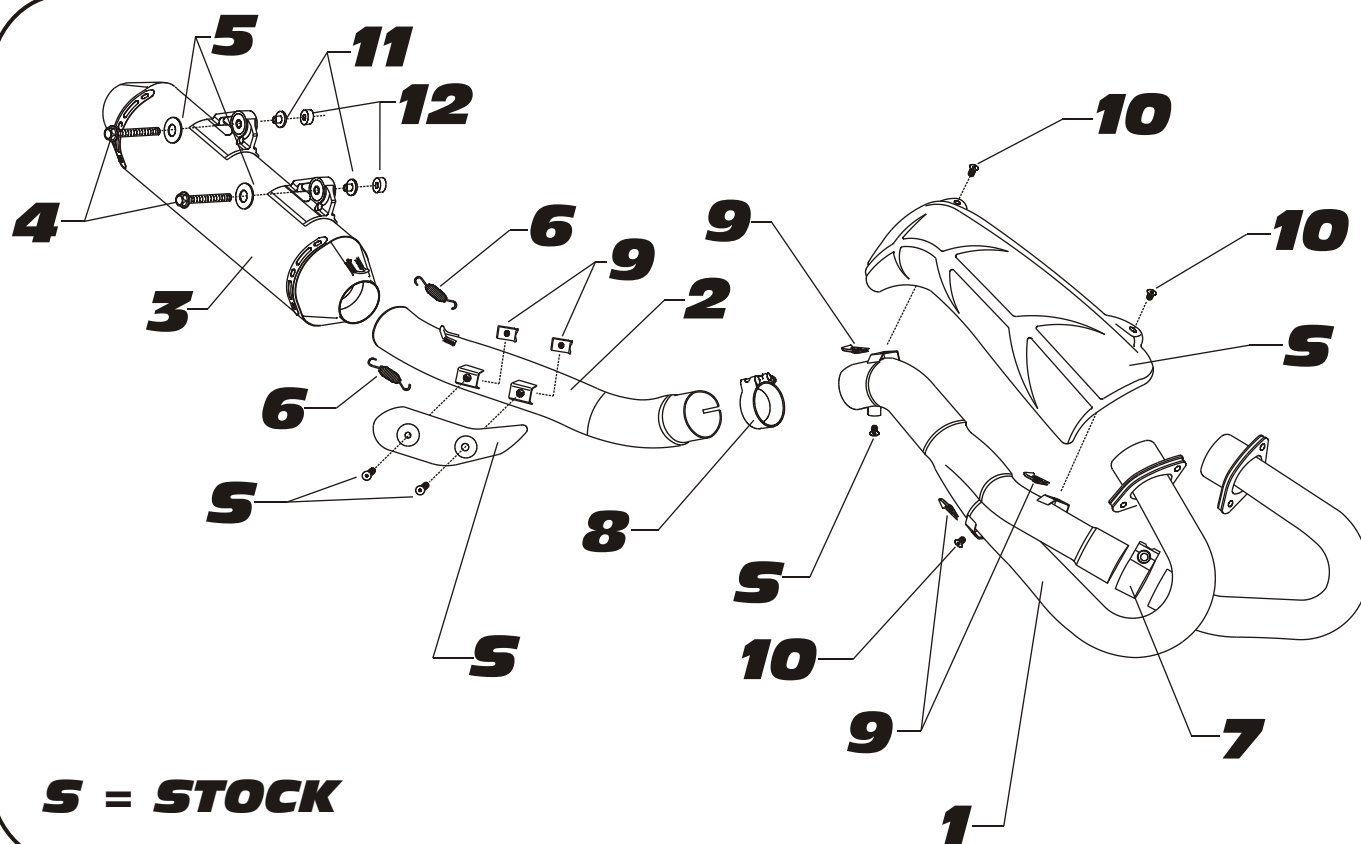


Fig. 4

- 6 Slide supplied exhaust clamp over the inlet of the Yoshimura tailpipe and install Yoshimura tailpipe and muffler onto Yoshimura header.
- 7 Mount muffler to chassis using supplied bolts, washers, and spacers (see Parts Diagram on page 4).
- 8 Torque muffler mounting bolts to 2.5 kg-m (18 lb-ft).
- 9 Torque exhaust clamp to 1.25 kg-m (9 lb-ft).
- 10 Install stock rear heatshield onto tailpipe using stock bolts and supplied heatshield mounting clips (stock heatshield washers are not used).
- 11 It is recommended that the slip-on system be wiped down with rubbing alcohol to remove oil and fingerprints. This will help prevent tarnishing of the finish after the exhaust is heated up.
- 12 Before starting engine check for proper clearance between new exhaust system and chassis body work or any moving parts. (i.e. rear brake, frame, tire, bodywork etc.) If any problem is found, please carefully follow through the installation steps again. If problem still persists, please call Yoshimura technical department at (800)634-9166, in CA (909)628-4722.

NOTE: After starting motorcycle, it is normal for new exhaust system and muffler to emit smoke until oil residue burns off.

#2388513

S = STOCK

Parts Diagram

NO.	DESCRIPTION	QTY	PART #
1	Yoshimura Stainless Steel Header	1	2388-101
2	Yoshimura Stainless Steel Tailpipe	1	2388-144-A
3	Yoshimura RS-2 Muffler	1	2388513-RMA
4	8mm x 45mm Flange Hex Bolt	2	M8X45H
5	Large Washer	2	8MMWASHERL
6	Medium Exhaust Spring	2	RACE-SPS-1
7	Stainless Steel Header Clamp	1	22053
8	Stainless Steel Exhaust Clamp	1	20060
9	Heatshield Mounting Clips	5	M6X1U
10	6mm x 12mm Button Head Bolt	3	M6X12BHS
11	Aluminum Insert for Rubber Grommet	2	ALS-001
12	Aluminum Muffler Mount Spacers	2	8X10SPC
**	Rubber Grommet for Muffler Mount	2	011257-00
**	Yoshimura Spring Puller Tool	1	ST-200
**	Yoshimura Vinyl Sticker	1	17029



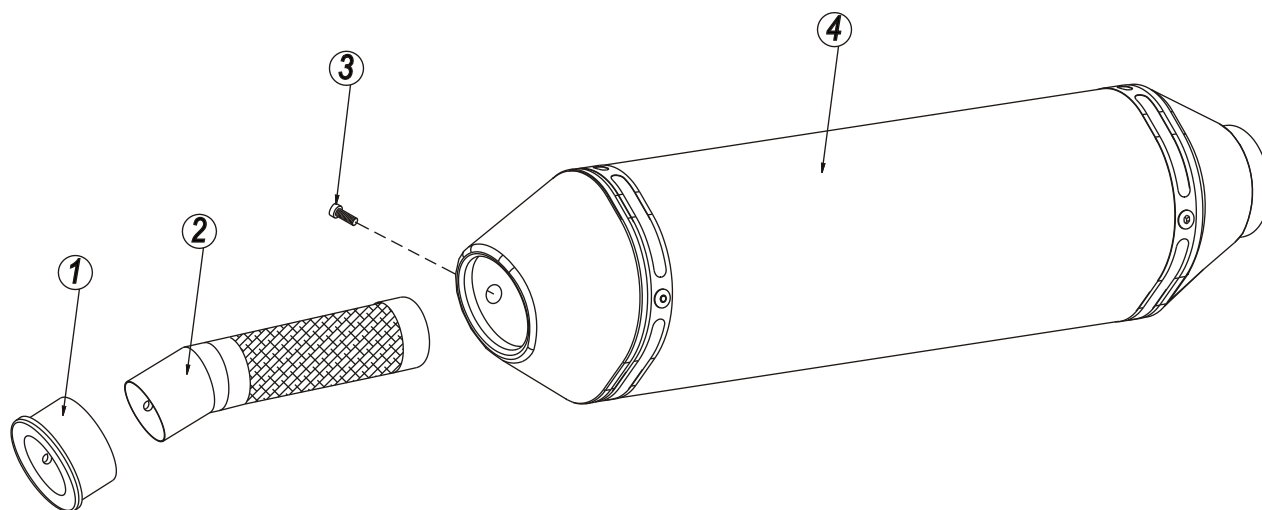
YOSHIMURA

RESEARCH & DEVELOPMENT OF AMERICA, INC.

5420 DANIELS STREET SUITE A, CHINO, CA 91710 · (800)634-9166 · (909)628-4722 · FACSIMILE (909)591-2198

www.yoshimura-rd.com

Spark Arrester Cleaning Information



Parts Diagram

Caution: *Muffler can be extremely hot. Let muffler cool down before removing spark arrester.*

Note: *Read through all instructions before beginning disassembly.*

Tools Needed:

3mm Allen Key
Wire Brush
Pair of Gloves
Safety Glasses

Cleaning Steps:

- 1 Using a 3mm Allen key, remove the bolt that secures the aluminum ring and spark arrester to the muffler (see Parts Diagram for location).
- 2 Remove the spark arrester from the muffler.

NO.	DESCRIPTION	QTY
1	Aluminum Ring	1
2	Spark Arrester	1
3	Spark Arrester Securing Bolt	1
4	Muffler Assembly	1

- 3 Using a wire brush, remove carbon deposits from spark arrester screen. Inspect the screen for excessive wear or damage. If spark arrester is excessively worn or damaged, the spark arrester must be replaced. Cleaning and inspection should be performed after every 60 hours of use.

CAUTION: *Gloves and safety glasses should be worn while cleaning spark arrester.*

- 4 Re-install spark arrester and aluminum ring. Torque the spark arrester securing bolt to 1.0 kg-m (7.3 lb-ft).

NOTE: *It is recommended that a low strength "Loc-tite" is used on the spark arrester securing bolt.*