



YOSHIMURA

RESEARCH & DEVELOPMENT OF AMERICA, INC.

5420 DANIELS STREET STE A, CHINO CA, 91710 · (800)634-9166 · (909)628-4722 · FACSIMILE (909)591-2198

www.yoshimura-rd.com

YOSHIMURA PERFORMANCE EXHAUST SYSTEM 2008 YAMAHA RHINO 700

2362500

YOSHIMURA STAINLESS STEEL FULL SYSTEM



**THIS PRODUCT IS DESIGNED FOR USE IN CLOSED COURSE
RACING AND IS NOT INTENDED FOR ANY OTHER USE.**



CAUTION: The muffler packing on this system **MUST** be replaced every 6-8 hours of use, or after each moto. Failure to follow recommended muffler re-packing interval can cause muffler damage and may void the warranty.



NOTE: IN THE STATE OF CALIFORNIA, IT IS ILLEGAL TO MODIFY THE EMISSION CONTROL SYSTEM, WHICH INCLUDES THE CARBURETORS OF ANY VEHICLE.

Caution: Exhaust system can be extremely hot. Let vehicle cool down before beginning installation. Always wear hand and eye protection and take precautionary measures to avoid injury.

Note: Read through all instructions before beginning installation.

Tools Needed:

Metric Socket Set

Ratchet and extension

Metric wrench Set

Torque wrench

Drill

1/4" and 11/16" drill bits (or step drill bit)

Installation Steps:

1. Remove the bed.
2. Remove the stock heatshield by removing the four bolts that hold it in place.
3. Remove stock exhaust springs. (Fig. 1)
4. Remove tailpipe U-bend and exhaust mounting bolts.
5. Remove muffler.
6. Remove stock header.
7. Remove front and rear muffler mounts from chassis. (Fig. 1)
8. Install Yoshimura headers using stock nuts. Install right header first, then left. Do not torque at this time.

NOTE: Left header should cross over the right header. (Fig. 2)

9. Install Yoshimura muffler mounting bracket to chassis using only the center mounting bolt and nut. (See parts diagram for orientation). Torque bolt to 9 lb-ft (12.15 Nm).
10. Insert aluminum muffler spacer into muffler mounting bracket. (Fig. 3)
11. Insert right muffler into tailpipe. While inserting muffler into tailpipe, align muffler bracket with chassis mounting bracket. Do the same for left muffler.
12. Bolt mufflers together using supplied button head cap screw.

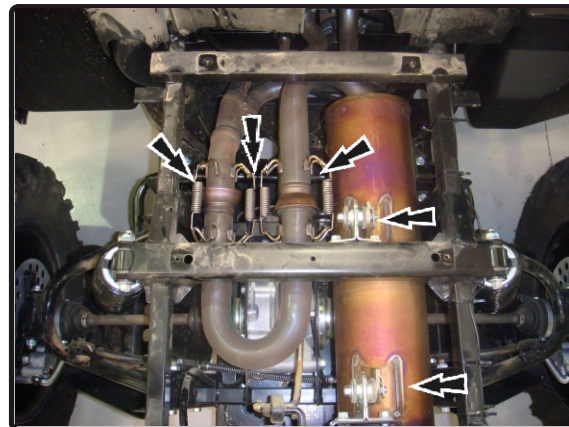


Fig 1



Fig 2

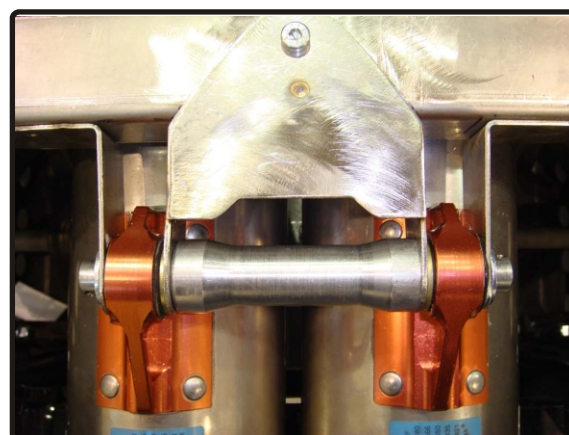


Fig 3

13. Bolt mufflers to chassis mounting bracket using supplied bolts. Do not torque at this time.

14. Torque header nuts to 14 lb-ft (18.9 Nm).

15. Torque muffler mounting bolts to 16.5 lb-ft (23 Nm).

NOTE: It is recommended that the muffler and tailpipe be wiped down with rubbing alcohol to remove oil and fingerprints. This will help prevent tarnishing of the finish after the exhaust is heated up.

16. Reinstall stock heatshield over Yoshimura muffler bracket using supplied bolts. Bolt front of heatshield to chassis using stock bolts. Torque bolts to 9 lb-ft (12.15 Nm).

17. Reinstall bed.

18. Before starting vehicle, check for proper clearance between new exhaust system and rear suspension (i.e. tire, swing-arm, brake, rear shock etc). If any problem is found, please carefully follow through the installation steps again. If problem still persists, please call Yoshimura technical department at (800) 634-9166 / in CA (909) 628-4722 .

**** NOTE:** After starting the vehicle, it is normal for a new exhaust system and muffler to emit smoke until oil residue burns off.

Fuel Injection Mapping Suggestions:

For maximum performance, fuel injection mapping is recommended for competition use only.

Note: It is illegal to modify the fuel injection system of any vehicle in the state of California.

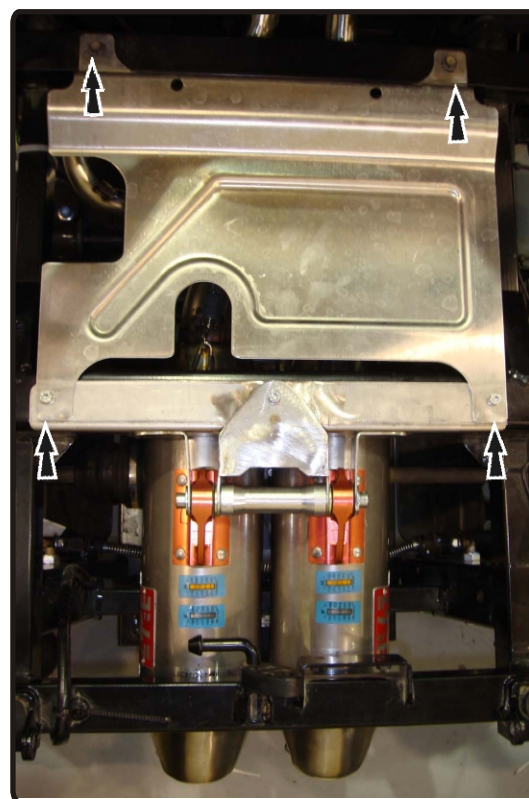
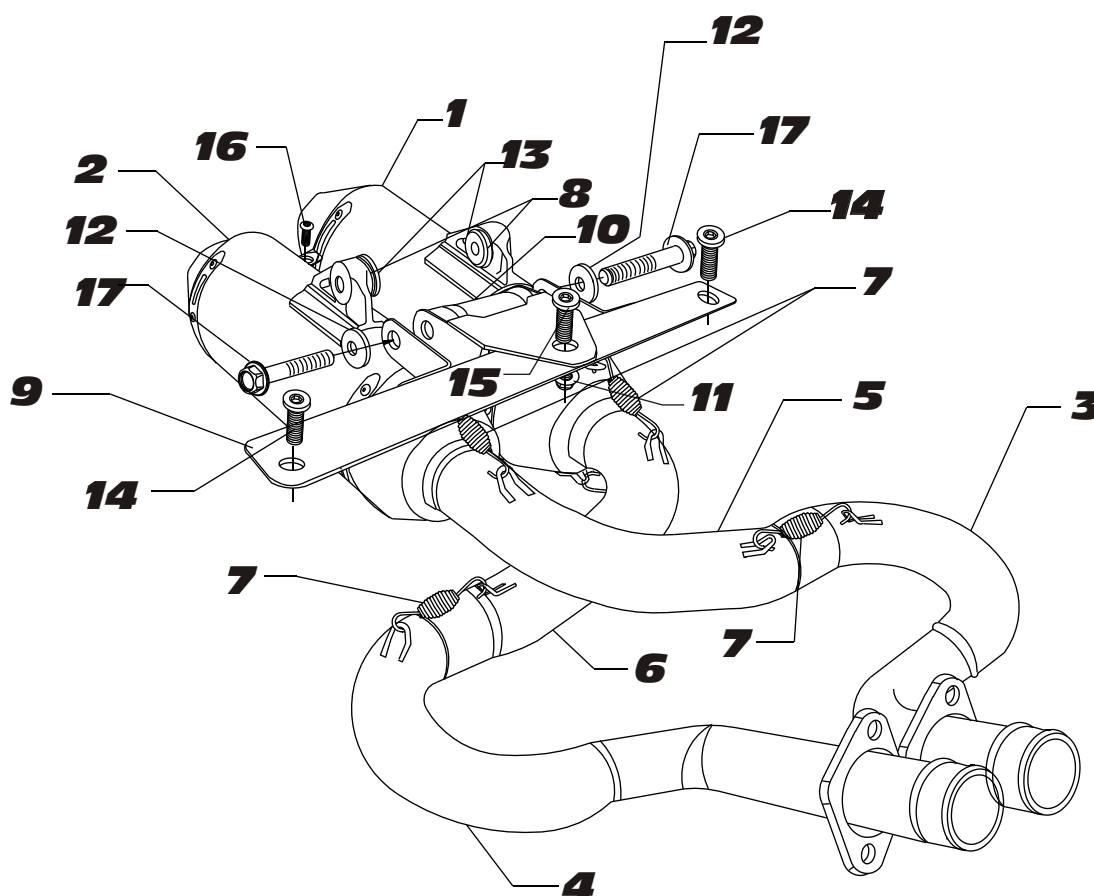


Fig 4

2362500



S=STOCK

NO.	DESCRIPTION	QTY	PART #
1	Yoshimura Muffler (Left)	1	2361500-LMA
2	Yoshimura Muffler (Right)	1	2361500-RMA
3	Yoshimura Stainless Steel Header (Left)	1	2362-102
4	Yoshimura Stainless Steel Header (Right)	1	2362-103
5	Yoshimura Stainless Steel Tailpipe (Left)	1	2362-146
6	Yoshimura Stainless Steel Tailpipe (Right)	1	2362-147
7	Medium Exhaust Spring	8	RACE-SPS-1
8	Rubber Bushing for Muffler Brackets	2	011257-00
9	Muffler Bracket	1	2362-BRKT-00
10	Muffler Bracket Spacer	1	2362SPC-00
11	6mm Hex Nut	1	6MMNUT
12	8mm Washer Large	2	8MMWASHERL
13	Aluminum Spacer	2	ALS-001
14	6mmX16mm Socket Head Cap Screw	2	M6X16L
15	6mmX20mm Socket Head Cap Screw	1	M6X20L
16	M6X6 Button Head Screw	1	M6X6BHS
17	8mmX35mm Flanged Hex Bolt	2	M8X35H
18	Offroad Endcap Plug	1	347PLUG
19	Spring Puller Tool	1	ST-200
20	Yoshimura Vinyl Sticker	1	17029



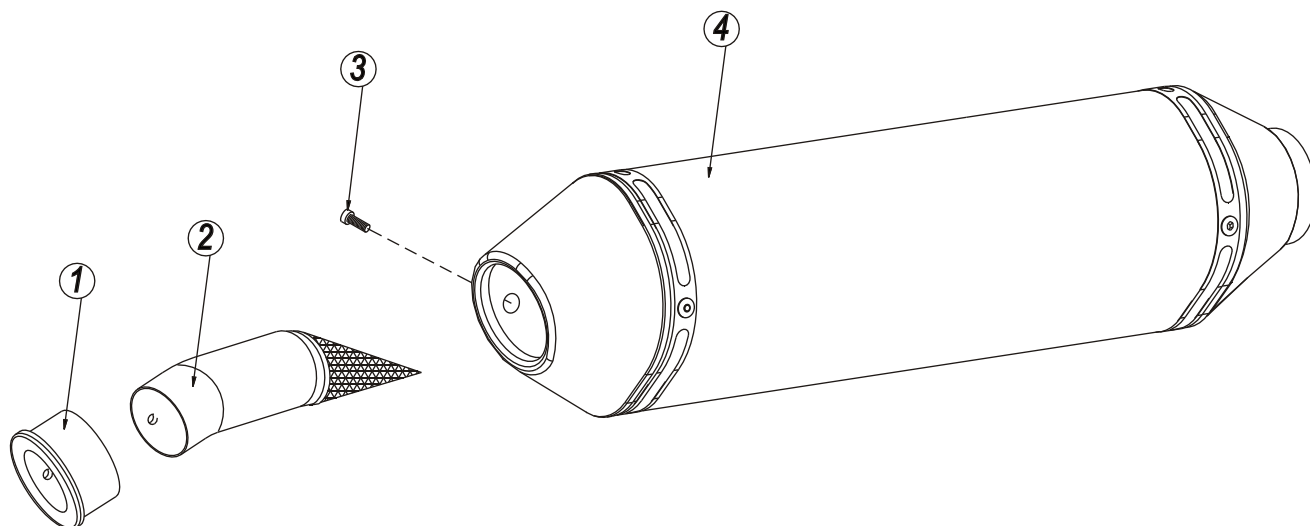
YOSHIMURA

RESEARCH & DEVELOPMENT OF AMERICA, INC.

5420 DANIELS STREET SUITE A, CHINO, CA 91710 · (800)634-9166 · (909)628-4722 · FACSIMILE (909)591-2198

www.yoshimura-rd.com

Spark Arrester Cleaning Information



Parts Diagram

Caution: *Muffler can be extremely hot. Let muffler cool down before removing spark arrester.*

Note: *Read through all instructions before beginning disassembly.*

Tools Needed:

4mm Allen Key
Wire Brush
Pair of Gloves
Safety Glasses

Cleaning Steps:

- 1 Using a 4mm Allen key, remove the bolt that secures the aluminum ring and spark arrester to the muffler (see Parts Diagram for location).
- 2 Remove the spark arrester from the muffler.

NO.	DESCRIPTION	QTY
1	Aluminum Ring	1
2	Spark Arrester	1
3	Spark Arrester Securing Bolt	1
4	Muffler Assembly	1

- 3 Using a wire brush, remove carbon deposits from spark arrester screen. Inspect the screen for excessive wear or damage. If spark arrester is excessively worn or damaged, the spark arrester must be replaced. Cleaning and inspection should be performed at the same time as muffler repacking. Repacking is recommended every 8-10 hours of riding or 2 motos, whichever comes first.

CAUTION: Gloves and safety glasses should be worn while cleaning spark arrester.

- 4 Re-install spark arrester and aluminum ring. Torque the spark arrester securing bolt to 1.0 kg-m (7.3 lb-ft).

NOTE: It is recommended that a low strength "Loc-tite" is used on the spark arrester securing bolt.