



YOSHIMURA

RESEARCH & DEVELOPMENT OF AMERICA, INC.

5420 DANIELS STREET STE A, CHINO CA, 91710 · (800)634-9166 · (909)628-4722 · FACSIMILE (909)591-2198

www.yoshimura-rd.com

OFF-ROAD PERFORMANCE EXHAUST SYSTEM

Honda
2006-2008
TRX450R

2276713

STAINLESS STEEL SLIP-ON SYSTEM WITH ALUMINUM SLEEVE



THIS PRODUCT IS DESIGNED FOR USE IN CLOSED COURSE RACING AND IS NOT INTENDED FOR ANY OTHER USE.



CAUTION: The muffler packing on this system **MUST** be replaced every 6-8 hours of use, or after each moto. Failure to follow recommended muffler re-packing interval can cause muffler damage and may void the warranty.



NOTE: IN THE STATE OF CALIFORNIA, IT IS ILLEGAL TO MODIFY THE EMISSION CONTROL SYSTEM, WHICH INCLUDES THE CARBURETORS OF ANY VEHICLE.

Caution: Exhaust system can be extremely hot. Let motorcycle cool down before beginning installation.

Note: Read through all instructions before beginning installation.

Tools Needed:

11mm and 12mm Sockets
Ratchet and Extension
Torque Wrench

Installation Steps:

- 1 Unbolt and remove stock muffler (see Fig. 1 for bolt locations).
 - 2 Install supplied rubber grommet into aluminum muffler mounting bracket. Install aluminum insert into rubber grommet (make sure shoulder of aluminum insert faces toward the frame, see Fig. 2).
 - 3 Remove stock rubber grommet and stock metal insert from subframe and install supplied aluminum spacers (2276-SPCB) into subframe.
 - 4 Slide supplied exhaust clamp over the inlet of the Yoshimura tailpipe and install Yoshimura tailpipe and muffler onto stock header.
- NOTE:** Stock gasket between header and tailpipe is NOT used with Yoshimura slip-on system.
- 5 Mount muffler and tailpipe to stock mounting locations using supplied bolts, washers, and aluminum spacers (see Parts Diagram on Page 3).
 - 6 Torque exhaust clamp to 1.25 kg-m (9 lb-ft).
 - 7 Torque muffler and tailpipe mounting bolts to 2.5 kg-m (18 lb-ft).
 - 8 It is recommended that the exhaust system be wiped down with rubbing alcohol to remove oil and fingerprints. This will help prevent tarnishing of the finish after the exhaust is heated up.
 - 9 Before starting engine check for proper clearance between new exhaust system and chassis body work or any moving parts. (i.e. rear brake, frame, tire, bodywork etc.) If any problem is found, please carefully follow through the installation steps again. If problem still persists, please call Yoshimura technical department at (800)634-9166, in CA (909)628-4722.

NOTE: After starting motorcycle, it is normal for new exhaust system and muffler to emit smoke until oil residue burns off.



Fig. 1

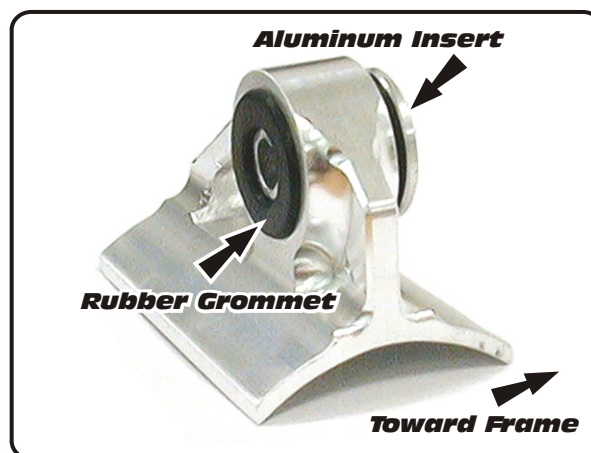
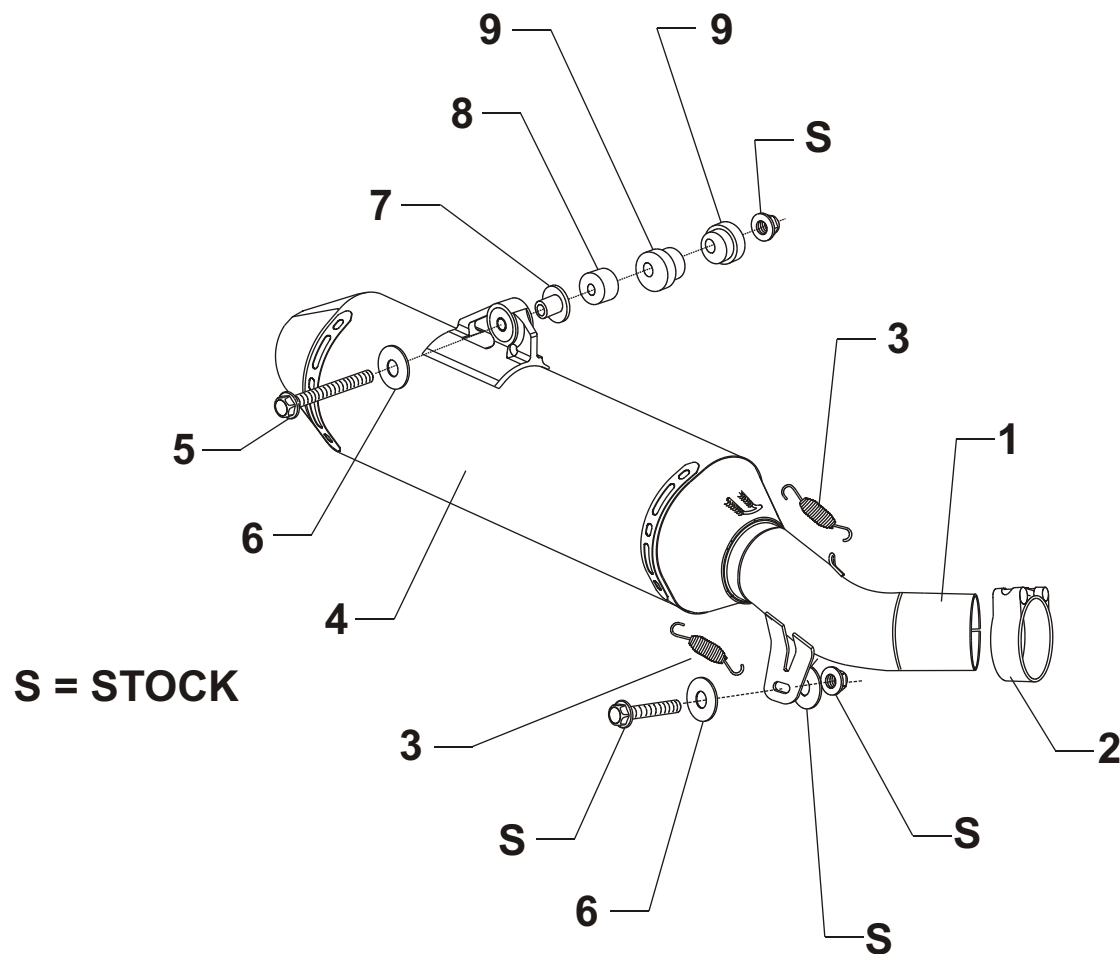


Fig. 2

#2276713



Parts Diagram

NO.	DESCRIPTION	QTY	PART #
1	Yoshimura Tailpipe	1	2276-152-A
2	Collector Clamp	1	22059
3	Medium Race Spring	2	RACE-SPS-1
4	Yoshimura Muffler Assembly	1	2276513-RMA
5	8mm X 95mm Flange Head Bolt	1	M8X100H
6	Large Washer	2	8MMWASHERL
7	Aluminum Insert for Rubber Grommet	1	ALS-001
8	8mm x 17mm Aluminum Spacer	1	8X22SPC
9	Aluminum Insert for Stock Subframe	2	2276-SPCB
**	Rubber Grommet for Muffler Mount	1	011257-00
**	Spring Puller Tool	1	ST-200
**	Yoshimura Vinyl Sticker	1	17029



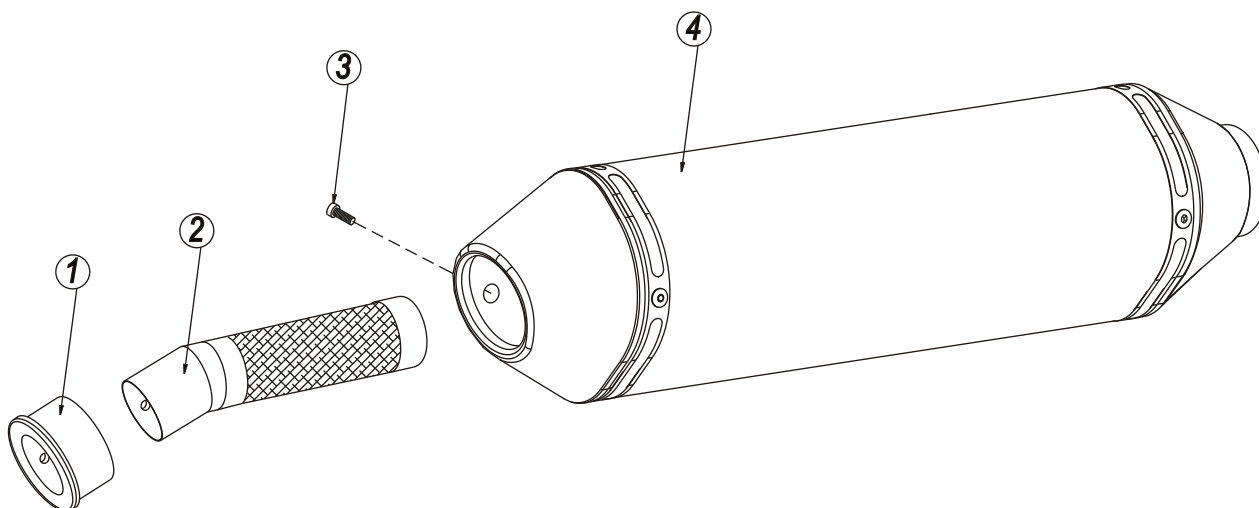
YOSHIMURA

RESEARCH & DEVELOPMENT OF AMERICA, INC.

5420 DANIELS STREET SUITE A, CHINO, CA 91710 · (800)634-9166 · (909)628-4722 · FACSIMILE (909)591-2198

www.yoshimura-rd.com

Spark Arrester Cleaning Information



Parts Diagram

Caution: *Muffler can be extremely hot. Let muffler cool down before removing spark arrester.*

Note: *Read through all instructions before beginning disassembly.*

Tools Needed:

3mm Allen Key
Wire Brush
Pair of Gloves
Safety Glasses

Cleaning Steps:

- 1 Using a 3mm Allen key, remove the bolt that secures the aluminum ring and spark arrester to the muffler (see Parts Diagram for location).
- 2 Remove the spark arrester from the muffler.

NO.	DESCRIPTION	QTY
1	Aluminum Ring	1
2	Spark Arrester	1
3	Spark Arrester Securing Bolt	1
4	Muffler Assembly	1

- 3 Using a wire brush, remove carbon deposits from spark arrester screen. Inspect the screen for excessive wear or damage. If spark arrester is excessively worn or damaged, the spark arrester must be replaced. Cleaning and inspection should be performed after every 60 hours of use.

CAUTION: *Gloves and safety glasses should be worn while cleaning spark arrester.*

- 4 Re-install spark arrester and aluminum ring. Torque the spark arrester securing bolt to 1.0 kg-m (7.3 lb-ft).

NOTE: *It is recommended that a low strength "Loc-tite" is used on the spark arrester securing bolt.*