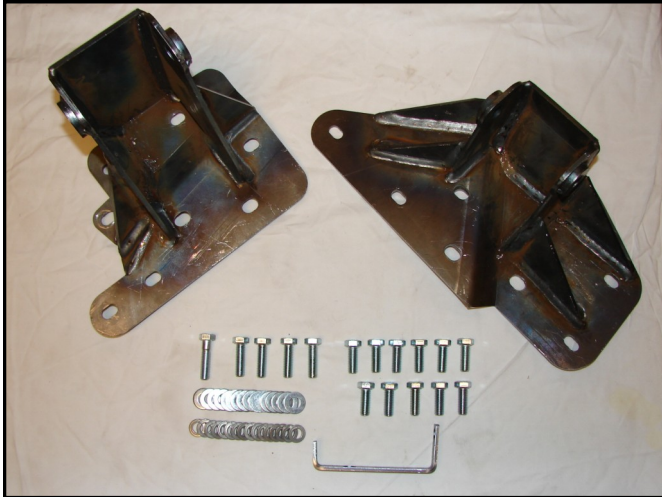




MOUNTAIN OFF ROAD ENTERPRISES, LLC.  
P.O. BOX 690 DELTA COLORADO 81416  
PHONE: 877-533-7229  
FAX: 888-698-5337  
E-mail: info@mountainoffroad.com

## INSTALLATION INSTRUCTIONS for BBTJ0006 BombProof™ BLOCK BRACKETS



### HARDWARE KIT:

- 1– DS Block Bracket
- 1– PS Block Bracket
- 11– 3/8-16x1 Bolt
- 4– 3/8-16x1-1/4 Bolt
- 1– 3/8-16x1-1/2 Bolt
- 16– 3/8" Flat Washers
- 16– 3/8" Lock Washers
- 1– AC Bracket

Please read and understand all instructions before beginning the installation of these motor mounts. Please read the terms and policies on the back of these instructions.

The **BBTJ0006** Block Brackets are designed to fit the following Jeep® vehicles: 2000-2006 TJ, LJ Wranglers equipped with 6-cylinder engines (4.0L ). These Brackets will work with the OEM motor mounts along with most Aftermarket Motor Mounts.

**STEP 1:** With the Jeep® on flat level ground, apply the parking brake, block the tires so it cannot move. Put the transmission in neutral. Using a jack, place a block of wood between the jack and the oil pan. Apply a slight amount of pressure on the oil pan. We recommend doing one side at a time.

**STEP 2:** On the drivers side remove the through bolt, lower nut and bolt on the motor mount and then remove the motor mount. Save this hardware! remove the OEM block bracket and the bracket that attaches to the block and to the AC compressor ( see figure 3 ). The new Block Bracket will reattach to the block using the original three holes plus five additional threaded holes on the block. We recommend cleaning the new holes with a 3/8"x16 tap. ( see figure 1)

**STEP 3:** Install the new DS Block Bracket and motor mount together, attach the block bracket using the supplied hardware using loc-tite on the bolts, ( See Figure 2 for bolt locations). On the hole where the AC bracket you removed in step 2 was, is where you will install the new supplied bracket, this bracket goes behind the block bracket ( see figure 4 ). Do not tighten the bolts yet. Reinstall the original motor mount bolts and nuts and check to see if the motor mount is in the same location as before, if not the block bracket can be moved slightly to realign the mount to the frame bracket. After the alignment is correct tighten the block bracket bolts and the bolt and nut on the motor mount. **Do not Tighten the through bolt on the motor mount at this time.**

**STEP 4:** On the Passenger side Remove the through bolt, lower nut and bolt on the motor mount and then remove the motor mount. Save this hardware! remove the OEM block bracket. The new Block Bracket will reattach to the block using the original three holes plus five additional threaded holes on the block. We recommend cleaning the new holes with a 3/8"x16 tap and the. ( see figure 3 )

FIGURE 1

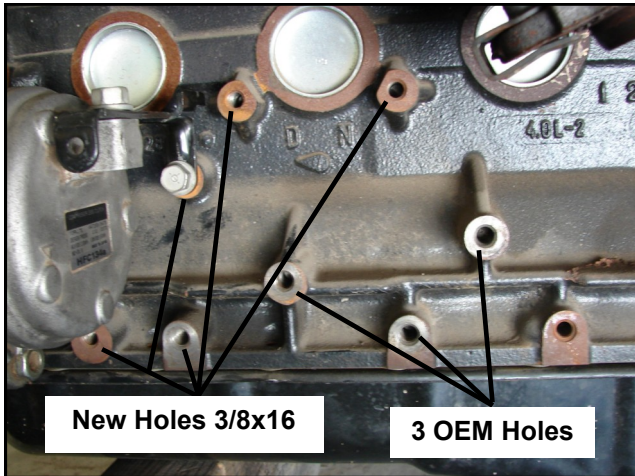
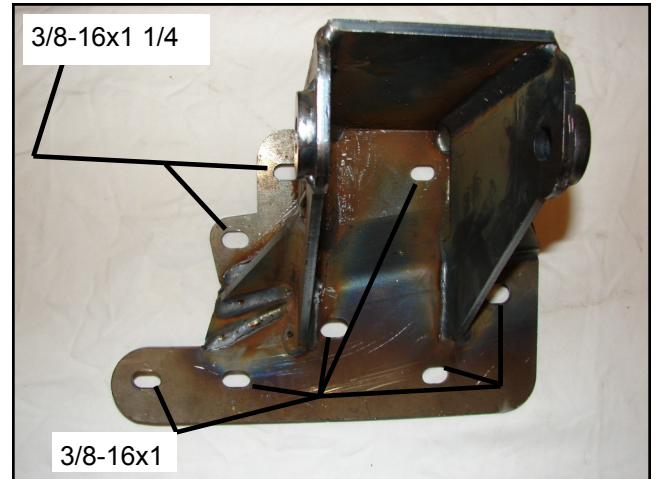
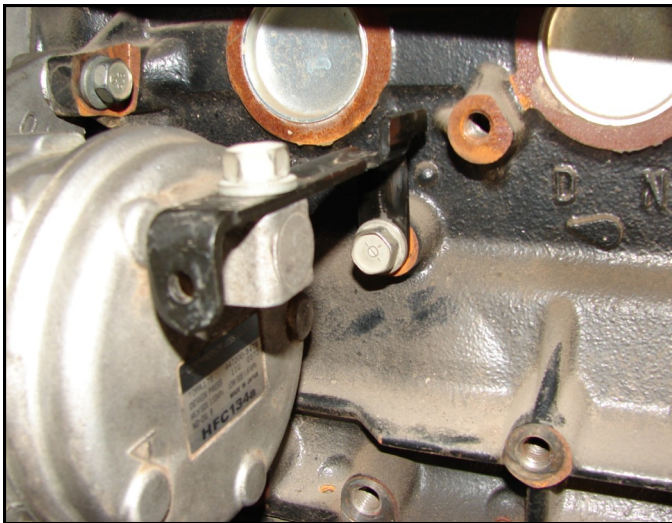


FIGURE 2



**STEP 5:** Install the new PS Block Bracket and the Motor mount together, attach the block bracket using the supplied hardware using loc-tite on the bolts, ( See Figure 5 for bolt locations). Do not tighten the bolts yet. Reinstall the motor mount and check to see if the motor mount is in the same location as before, if not the block bracket can be moved slightly to realign the mount to the frame bracket. The DS bracket has a slotted hole for the through hole on the motor mount this is to help align the mounts side to side. After the alignment is correct tighten the block bracket bolts and the bolts and nut on the motor mount. **Go back and tighten the DS through bolt.**

FIGURE 3



**DS Block Bracket Installed**

FIGURE 4

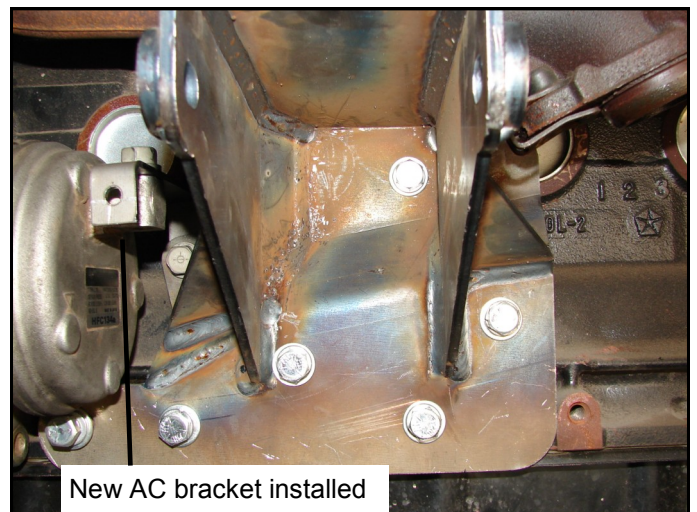
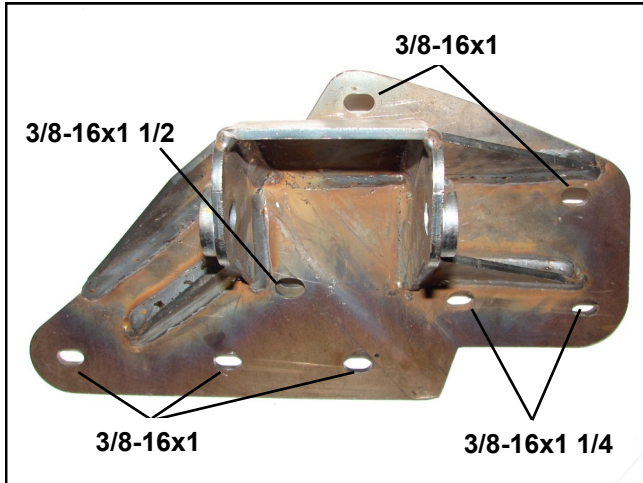


FIGURE 5



PS Block Bracket Installed



TERMS-POLICIES:

**FIT** and **TOLERANCES**: These Motor Mounts are the results of countless hours of research, testing, fitting and refining. Jeep® frames have a wide tolerance on bolt hole centers from frame to frame. This is why M.O.R.E.™ has installed “slots” in which to mount them. In addition to the factory tolerances, most people install other than factory equipment such as suspension lift kits, skid plates, different transfer cases etc. M.O.R.E.™ has done the best job we can to insure that our parts fit with all of the possibilities. However, you may find it necessary to grind, elongate, bend, or force these parts to fit on your rig. Please use common sense when installing these parts and let us know how we can improve them.

**DAMAGE CLAIMS**: All orders are carefully packed, however, mishandling by the carrier can result in damage. The carrier has the responsibility for the shipment from the time it leaves our warehouse until it is delivered to you. All claims for lost or damaged goods should be reported to the carrier, not to **M.O.R.E.™** LLC.

**RETURNS**: No returns will be accepted without prior permission from **M.O.R.E.™** LLC. After you receive a Return Goods Authorization (RGA) number, merchandise must be returned prepaid and insured. A claim must be made within 30 days from receipt of merchandise. The original invoice or a copy with the RGA number written on must accompany all returns. A 20% restocking fee will be charged on all parts returned for credit or refund unless merchandise is proven to be defective or was shipped wrong by **M.O.R.E.™** LLC. *No merchandise will be issued credit or refund if it has been installed, modified, used in any way or is in unsalable condition.*

**WARRANTY**: All merchandise is warranted to be free from defects in materials and workmanship prior to installation. Any alteration or improper use will void this warranty. Because all parts we sell are intended for use in heavy-duty applications it is not possible to warrantee or guarantee the performance of any items. **M.O.R.E.™** LLC. products and the products manufactured by others, which we sell may be subject to an infinite variety of conditions due to the manner in which they are used, serviced and/or installed. Purchasers and users of such products rely upon their own judgment as to the suitable use selection, service and installation of such products.

**PRODUCT DISCLAIMER**: Modification of your vehicle to enhance performance with parts sold by **M.O.R.E.™** LLC. may create a dangerous condition which could cause serious bodily injury, and the buyer hereby expressly assumes all risks associated with any such modifications. All parts sold by **M.O.R.E.™** LLC. are for racing or off road use only. Mountain Off Road Enterprises LLC. will not accept responsibility for personal injury or property damage arising from the failure of any parts manufactured or sold by **M.O.R.E.™** LLC.

**Specifications are subject to change without notice.**

**Jeep®, AMC®, CJ®, YJ®, TJ®, LJ®, Wrangler®**, are registered trademarks of DaimlerChrysler. **M.O.R.E.™** is not affiliated with DaimlerChrysler.

**M.O.R.E.™, BombProof™, S.R.S.™, SlipLoc™, DoubleJointed™, RockProof™**, are trademarks used by **Mountain Off Road Enterprises, LLC**. These instructions and the M.O.R.E.™ logo are copyright©, 1999-2008.