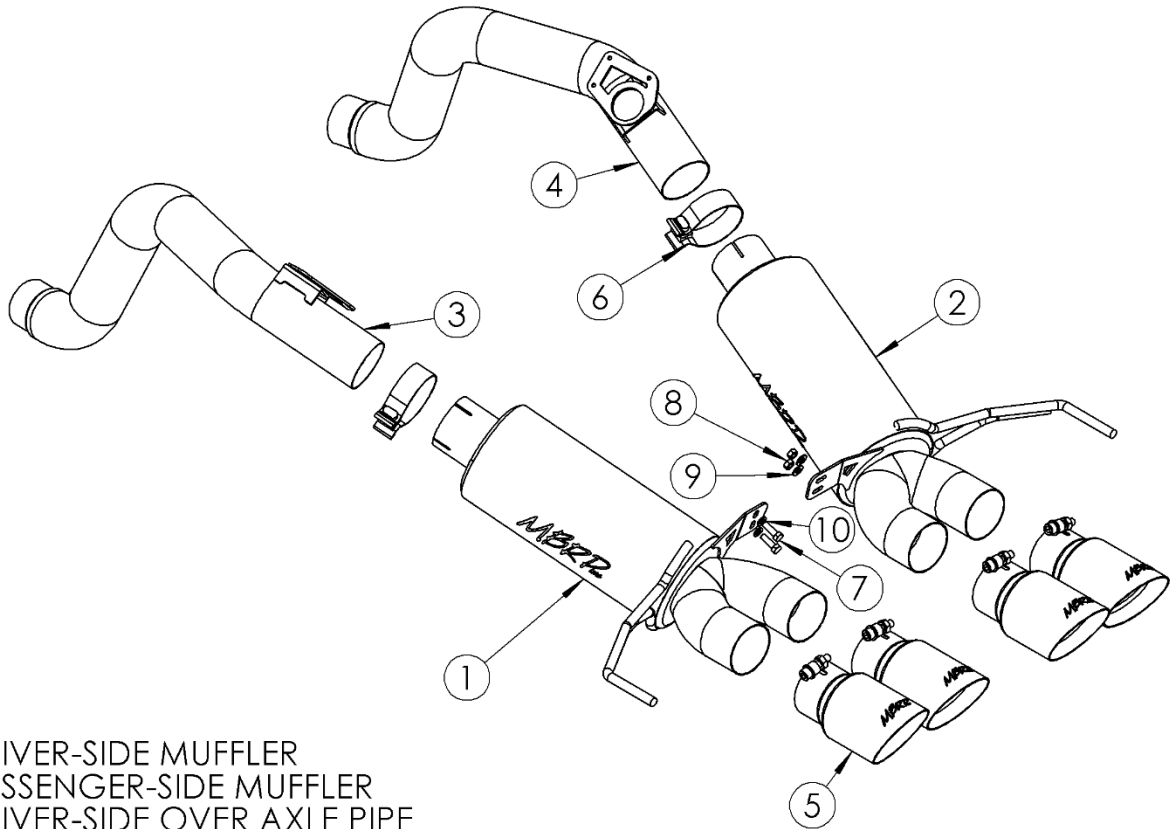


# S7030

2014-16 CHEVROLET CORVETTE AXLE  
BACK DUAL, WITH QUAD TIPS, 2017-UP  
TUNING MAY BE REQUIRED

**MBRP**  
INC.  
PERFORMANCE EXHAUST



1. DRIVER-SIDE MUFFLER
2. PASSENGER-SIDE MUFFLER
3. DRIVER-SIDE OVER AXLE PIPE
4. PASSENGER-SIDE OVER AXLE PIPE
5. EXHAUST TIP (4PCS)
6. 3" CLAMP (2PCS)
7. HEX BOLT 5/16" X 1" (2PCS)
8. HEX NUT 5/16" (2PCS)
9. FLAT WASHER 5/16" (2PCS)
10. LOCKING WASHER 5/16" (2PCS)

## PLEASE READ BEFORE STARTING INSTALLATION

While MBRP Inc. has made every effort to ensure that all components of this system are of superior quality and properly packaged, it is the installer's responsibility to ensure the following before removal of the factory exhaust:

- that ALL components shown above are present.
- that ALL mating components fit together.
- that there are no damaged components.
- that the system you have purchased is appropriate for your vehicle year, model and configuration.
- that the system will not interfere with any modifications previously installed or planned.
- that you have read and understand these instructions.

If you have any questions or are uncertain about any aspect of the installation of this system to your vehicle please contact your dealer before commencing installation.

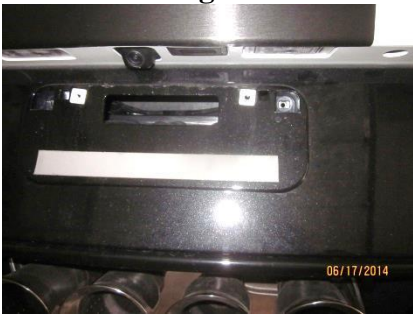
## Removal of Stock System



**Figure 1**



**Figure 2**



**Figure 3**



**Figure 4**



- 1 The lower fascia needs to be removed. Remove the ten bolts that secure the bottom corners of the lower fascia (5 per side) using a 7mm socket. **Refer to Figure 1.**
2. Remove the two bolts above the tip location using a 10mm socket. **Refer to Figure 2.**
3. Unscrew and remove the license plate to enable access to the two upper center mounting bolts for the rear. **Refer to Figure 3.**
4. Remove the two lower mesh inserts on each side of the lower fascia. Each one is snapped in place using six tabs, they can be pushed out from the inside of the fascia. **Refer to Figure 4.**
5. Remove the two reflective lenses. Each reflector is snapped in place using three tabs, which can be pushed out from inside the fascia. Below each of them there is an additional two bolts a 10 mm socket is required. **Figure 4.**
6. Unsnap each lower rear corner of the rear fascia by pushing the end of the tab inwards while pushing the rear fascia up and then backwards. **Figure 5.**

**Figure 5**



7. Unplug the motors that control the exhaust valves, some cars will have an additional set that operate valves for the outside tips. All cars will have the motors located just in front of the mufflers.

**Refer to Figures 6 & 7.**

**Figure 6**



8. Loosen the band clamps located just forward of the rear axle. The band clamps will be reused for your new exhaust. Remove the two bolts holding the stock mufflers together. **Refer to Figure 6.**

**Figure 7**



9. Beginning on the passenger side, remove the two bolts securing the rear muffler hanger. Set aside the hanger bolts to be reused during the installation process. Remove the passenger-side muffler assembly from the vehicle. Repeat for the driver-side muffler assembly. **Refer to Figures 6 & 7.**

10. Remove the exhaust valves motors from the stock exhaust assemblies retain the parts and hardware for installation.

**Refer to Figure 8.**

### Installation of MBRP Inc. Performance Exhaust

**Note: 2017-up models may require tuning**

**Figure 8**



1. Install the valve motors to the **Passenger-side** and **Driver-side Over Axle Pipes** using the stock hardware. Note: the valve assembly will just be held in place and plugged back in. There is no exhaust valve in the MBRP system but by reinstalling the valve motor no warning lights will appear. The valves are not actually used in any mode other than the Economy mode. The economy mode is not recommended to be used with your performance exhaust.

**Figure 9**

2. Install the **Passenger-Side Over Axle Pipe** and **Driver-side Over Axle Pipe** using the existing band clamp. Leave the clamps loose enough for some adjustment. Reattach the wiring harness to the valve motors.

3. Install the **Driver-Side Muffler** using the **3" Band Clamp** and the rear muffler hanger assembly that was removed in step 9.

4. Repeat step 3 for the **Passenger-Side Muffler**.

**Figure 10**







**Figure 11**

5. Attach the mufflers together with the hardware provided. Leave loose enough for some adjustment. Install the **Exhaust Tips** to the 4 muffler outlets. Check spacing & height of the tips, they should be evenly spaced. Adjustments can be made by rotating the **Over Axle Pipes** and by tightening the hardware between the mufflers. **Refer to Figure 12.**



**Figure 12**

6. Reinstall fascia and check the alignment. Tighten all clamps and hardware. Check along the whole length of the new exhaust system to ensure that there is adequate clearance around the fascia, fuel and brake lines or any wiring. If any interference is detected relocate or adjust. Make sure you tighten all the bolts in the bumper fascia. Reinstall the marker lights, grills & license plate.



**Congratulations!** You are ready to begin experiencing the improved performance and driving pleasure of your **MBRP Inc.** performance exhaust system. We know *you will enjoy your purchase.*