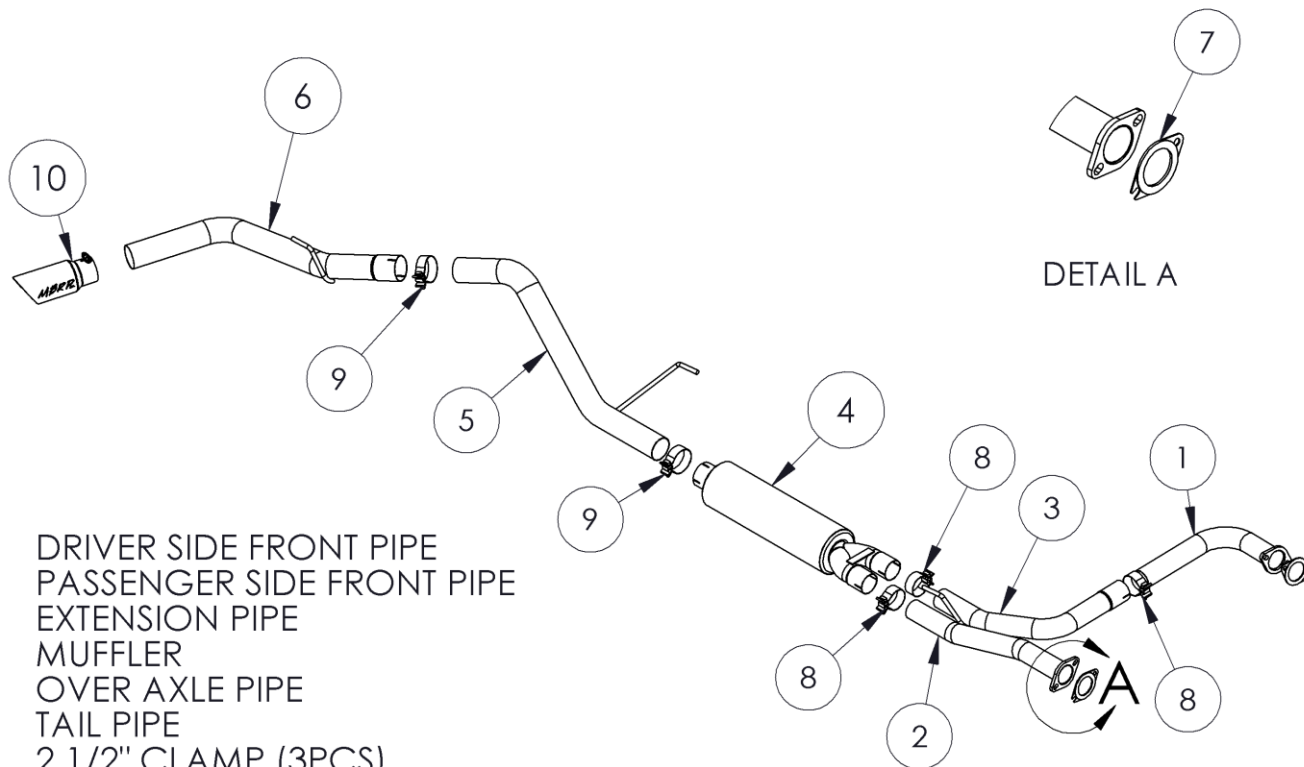


S5406

05-UP NISSAN FRONTIER, 4.0L, CAT BACK,
3" SINGLE SIDE

MBRP
INC.
PERFORMANCE EXHAUST



1. DRIVER SIDE FRONT PIPE
2. PASSENGER SIDE FRONT PIPE
3. EXTENSION PIPE
4. MUFFLER
5. OVER AXLE PIPE
6. TAIL PIPE
7. 2 1/2" CLAMP (3PCS)
8. 3" CLAMP (2PCS)
9. GASKET (2PCS)
10. EXHAUST TIP

NOTE: SADDLE CLAMPS USED IN ALUMINIZED SYSTEMS

PLEASE READ BEFORE STARTING INSTALLATION

While MBRP Inc. has made every effort to ensure that all components of this system are of superior quality and properly packaged, it is the installer's responsibility to ensure the following before removal of the factory exhaust:

- that ALL components shown above are present.
- that ALL mating components fit together.
- that there are no damaged components.
- that the system you have purchased is appropriate for your vehicle year, model and configuration.
- that the system will not interfere with any modifications previously installed or planned.
- that you have read and understand these instructions.

If you have any questions or are uncertain about any aspect of the installation of this system to your vehicle please contact your dealer before commencing installation.



Figure 1

Removal of Stock System:

1. Apply a penetrating lubricant liberally to all exhaust fasteners, hangers and rubber insulators.

2. Remove nuts from the exhaust flanges behind the catalytic converters. **Refer to Figure 1 and 2.**



Figure 2

3. Remove existing exhaust hanger by removing the two bolts on the hanger. Keep for reinstallation. **Refer to Figure 3.**

4. Lubricate then remove hardware from the rearmost exhaust hanger. Keep for reinstallation. **Refer to Figure 4.**



Figure 3

5. Loosen slip joint behind muffler. Remove the hanger from the rubber insulator. Remove the exhaust from the vehicle. **Refer to Figure 5.**



Figure 4

Installation of MBRP Inc. Performance Exhaust:



Figure 5

1. Install the **Driver Side Extension Pipe** using one of the provided **Gaskets** and existing hardware. Leave hardware loose enough for some adjustment. **Refer to Figure 5.**



Figure 6

2. Slide a **2 ½” Clamp** over the **Extension Pipe** and install it to the **Driver Side Front Pipe**. **Refer to Figure 6.**

3. Slide the existing factory hanger onto the **Extension Pipe** and reattach to the vehicle. **Refer to Figure 6.**



Figure 7

4. Install the **Passenger Side Front Pipe** using a **Gasket** and existing hardware. Leave the hardware loose enough for adjustment. **Refer to Figure 7.**

5. Slide two **2 ½” Clamps** onto the **Muffler** and attach to the **Passenger Side Front Pipe** and the **Extension Pipe**. Leave the **2 ½” Clamps** loose enough for some adjustment. **Refer to Figure 8.**

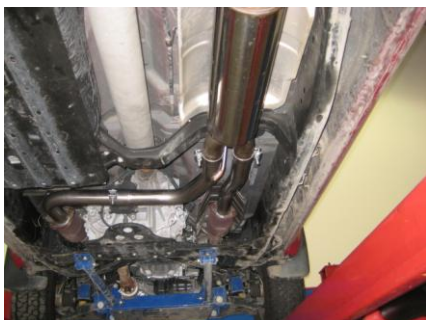


Figure 8



Figure 9

6. Slide a **3" Clamp** over the outlet side of the **Muffler**. Position the **Over Axle Pipe** over the axle and loosely attach it to the **Muffler**. Install the **Over Axle Pipe** hanger into the factory rubber insulator. **Refer to Figure 9.**



Figure 10

7. Slide a **3" Clamp** over the **Tail Pipe** and install onto the **Over Axle Pipe**. **Refer to Figure 10.**

8. Slide the **Tail Pipe** hanger into the rearmost rubber insulator and reattach to the frame. **Refer to Figure 10.**

9. Install and adjust the **Exhaust Tip** to suit. Using an 8mm Allen wrench, tighten the lock bolt located on the **Exhaust Tip**. **Refer to Figure 11.**



Figure 11

10. Check along the whole length of the exhaust system to ensure that there is adequate clearance around the spare tire, fuel and brake lines or any wiring. If any interference is detected relocate or adjust.



Congratulations! You are ready to begin experiencing the improved power, sound and driving excitement of your MBRP Inc. performance exhaust system. We know you will enjoy your purchase.