



## *Installation Instructions*



***6" Suspension System***  
***FTS25005BK / FTS25006BK***  
***2006-2015 Nissan Frontier 2wd/4wd***  
***SHORT BED ONLY***

***Fabtech Motorsports***  
***4331 Eucalyptus Ave. Chino, CA 91710***  
***Tech Line 909-597-7800 Fax 909-597-7185 Web [www.fabtechmotorsports.com](http://www.fabtechmotorsports.com)***



**Tool List: (not included)**

- Floor Jack & Jack Stands
- Assorted Metric & S.A.E Sockets & Wrenches
- Torque Wrench
- Die Grinder With Cut Off Wheel & Grinding Wheel
- Heavy Duty Ratchet Strap

**READ ALL INSTRUCTIONS THOROUGHLY FROM START TO FINISH BEFORE BEGINNING INSTALLATION! IF THESE INSTRUCTIONS ARE NOT PROPERLY FOLLOWED, SEVERE FRAME, DRIVELINE AND / OR SUSPENSION DAMAGE MAY RESULT.**

**CHECK ALL PARTS INCLUDED IN THIS KIT TO THE PARTS LIST ABOVE BEFORE BEGINNING INSTALLATION OF THIS KIT. IF ANY PARTS ARE MISSING, CONTACT FABTECH AT 909-597-7800.**

**NOTE- PRIOR TO THE INSTALLATION OF THIS SUSPENSION SYSTEM, A FRONT END ALIGNMENT MUST BE PERFORMED AND RECORDED. DO NOT INSTALL THIS SYSTEM IF THE VEHICLE ALIGNMENT IS NOT WITHIN FACTORY SPECIFICATIONS. CHECK FOR FRAME AND SUSPENSION DAMAGE PRIOR TO INSTALLATION. THIS SUSPENSION SYSTEM DOES NOT REQUIRE WELDING FOR INSTALLATION. DO NOT WELD ANY OF THESE COMPONENTS.**

**VEHICLES THAT WILL RECEIVE OVERSIZED TIRES SHOULD CHECK BALL JOINTS, TIE RODS ENDS AND RACK & PINION EVERY 2500-5000 MILES FOR WEAR AND REPLACE AS NEEDED.**

**DO NOT ALTER THE FINISH OF THESE COMPONENTS, EXAMPLE- CHROMING, ZINC PLATING OR PAINTING. CHANGING THE FINISH CAN CAUSE STRUCTURAL FATIGUE OF COMPONENTS.**

**THIS SYSTEM MUST BE INSTALLED WITH FABTECH SHOCK ASBORBERS TO PREVENT POSSIBLE BALL JOINT & CV DAMAGE.**

**THE INSTALLATION OF THIS SUSPENSION SYSTEM SHOULD BE PERFORMED BY TWO PROFESSIONAL MECHANICS.**

**A LARGER TIRE CANNOT BE INSTALLED ON THE O.E.M WHEEL. FABTECH RECOMMEND'S A 17X8 WHEEL WITH A 5" BACK SPACING WITH A 315/70R17 TIRE.**

**CAN NOT USE OEM WHEEL AND TIRE**

**THIS INSTRUCTION SHEET COVERS THE INSTALLATION OF THE COILOVER EXTENSIONS (included in FTS25006BK Box 2 kit) IN THE BASIC KIT. FOLLOW THE APPROPRIATE STEPS FOR THE KIT YOU HAVE PURCHASED.**

**VERIFY DIFFERENTIAL FLUID IS AT MANUFACTURES RECOMMENDED LEVEL PRIOR TO KIT INSTALLATION. INSTALLATION OF THE KIT WILL RE-POSITION THE DIFFERENTIAL AND THE FILL PLUG HOLE MAY BE IN A DIFFERENT POSITION. (FOR EXAMPLE, IF THE MANUFACTURE RECOMMENDS 3 QUARTS OF FLUID, MAKE SURE THE DIFF HAS 3 QUARTS OF FLUID). CHECK YOUR SPECIFIC MANUAL FOR CORRECT AMOUNT OF FLUID.**



*Parts List*

| <b>FTS25005B<br/>K</b> |               |                          | <b>Box 1 Nissan<br/>Frontier</b> |               |                             |
|------------------------|---------------|--------------------------|----------------------------------|---------------|-----------------------------|
| <b>Qty</b>             | <b>Part #</b> | <b>Description</b>       | <b>Qty</b>                       | <b>Part #</b> | <b>Description</b>          |
| 1                      | FT60029D      | Driver Spindle           | 2                                | FT60026       | Alignment Cams              |
| 1                      | FT60029P      | Pass. Spindle            | 2                                | FT60033       | Frnt. Brake Hose Tab        |
| 2                      | FT60030       | Tie Rod End              | 4                                | FT60034       | Alum. Shock Insert          |
| 1                      | FT60031BK     | Frnt. Bump Stop Drv.     | 1                                | FT97150-6-106 | Spacer                      |
| 1                      | FT60032BK     | Frnt. Bump Stop Pass     | 2                                | FT25006i      | Instructions                |
| 1                      | FT60008BK     | Frnt. Diff Skid Plate    | 1                                | FT60046       | Pass. Rear Brake Line Brkt  |
| 2                      | FT60014       | Bump Stop Nut Tab        | 1                                | FT60045       | Driver Rear Brake Line Brkt |
| 2                      | FT60020       | Frnt. Brake line Nut Tab | 2                                | FT70014       | Rear Brake Line Brkt        |
| 1                      | FT60037       | Sway Bar Brkt Drv.       | 1                                | FT1044        | Bushing Kit                 |
| 1                      | FT60038       | Sway Bar Brkt Pass.      |                                  |               |                             |
| 1                      | FT60066       | Hardware 1               |                                  |               |                             |
|                        |               |                          |                                  |               |                             |
| <b>FTS25006B<br/>K</b> |               |                          | <b>Box 2 Nissan<br/>Frontier</b> |               |                             |
| <b>Qty</b>             | <b>Part #</b> | <b>Description</b>       |                                  |               |                             |
| 1                      | FT60047BK     | Front Crossmember        |                                  |               |                             |
| 1                      | FT60048BK     | Rear Crossmember         |                                  |               |                             |
| 2                      | FT70011BK     | Impact Tubes             |                                  |               |                             |
| 2                      | FT30064       | Impact Tube Brackets     |                                  |               |                             |
| 4                      | FT60035BK     | Shock Ext. Upper         |                                  |               |                             |
| 2                      | FT60036BK     | Shock Ext. Lower         |                                  |               |                             |
| 2                      | FTBK4         | Rear Lift Block          |                                  |               |                             |
| 4                      | FT1500U       | Rear U-Bolt              |                                  |               |                             |
| 1                      | FT60049       | Hdwr Sub-Assembly        |                                  |               |                             |
|                        |               |                          |                                  |               |                             |



*Hardware*

| <b>FT60066</b> |                        | <b>Hardware Kit</b>    |
|----------------|------------------------|------------------------|
| <b>Qty</b>     | <b>Description</b>     | <b>Location</b>        |
| 6              | 9/16"-12 x 4 1/2" Bolt | Crossmembers           |
| 9              | 9/16"-12 C-Lock Nut    |                        |
| 24             | 9/16" SAE Flat Wshr    |                        |
| 2              | 1/4"-20 X 3/4" Bolt    | Brk Line @ Bumpstop    |
| 2              | 1/4"-20 C-Lock Nut     |                        |
| 14             | 1/4" SAE Flat Wshr     |                        |
| 6              | 3/8"-16 X 1-1/4" Bolt  | Bstp To Crsmmbr&Frm    |
| 4              | 3/8"-16 C-Lock Nut     |                        |
| 10             | 3/8" SAE Flat Wshr     |                        |
| 2              | 3/8" Split Washer      | w/ nut tab             |
| 2              | 1/4"-20 x 1 1/4" Bolt  | Brk Ln @ frm w/nut tab |
| 6              | 1/4" SAE Flat Wshr     |                        |
| 6              | 1/4" Split Washer      |                        |
| 8              | 5/16"-18 x 1-1/2" Bolt | Shock brackets         |
| 8              | 5/16"-18 C-Lock Nut    |                        |
| 16             | 5/16" SAE Flat Wshr    |                        |
| 4              | 1/2"-13 x 3 1/2" Bolt  | Shock Extensions       |
| 10             | 1/2"-13 C-Lock Nut     |                        |
| 21             | 1/2" SAE Flat Wshr     |                        |
| 5              | 1/2"-13 x 1 3/4" bolt  | Str Stop/Sway Bar Brkt |
| 1              | 1/2" Split Washer      |                        |
| 2              | 1/2"-13 x 2-1/4" bolt  |                        |
| 2              | 1/8" x 2 Cotter Pin    | Upr BJ & Tie Rod End   |
| 2              | 3/16" x 2" Cotter Pin  | C.V. Nut               |
| 8              | 8" Zip Ties            |                        |
| 2              | 1/4"-20 Nylock Nut     |                        |
| 4              | 1/4"-20 x 1 1/4" Bolt  |                        |
| 2              | 5/16"-18 x 1" Bolt     |                        |
| 8              | 7/16" SAE Flat Wshr    |                        |
| 4              | 7/16"-14 C-Lock Nut    |                        |
| 4              | 7/16"-14 x 3 1/2" Bolt |                        |
| 1              | 9/16"-12 x 4" Bolt     |                        |
| 2              | 9/16"-12 x 1-1/4" Bolt |                        |
| 8              | 9/16"-18 Nylock Nut    |                        |
| 4              | Rubber Clamp           |                        |
| 2              | Thread locking         |                        |

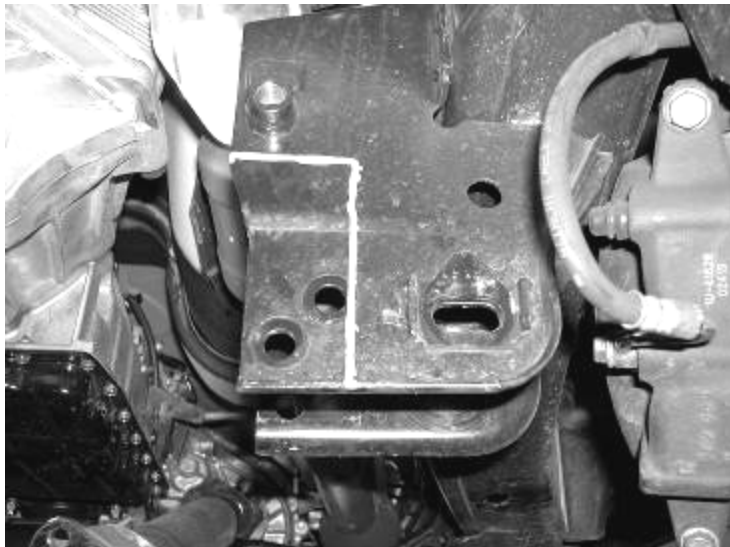
## **INSTALLATION INSTRUCTIONS:**

1. Disconnect the negative terminal on the battery. With the vehicle on level ground set the emergency brake and block the rear tires. Jack up the front end of the truck and support the frame rails with jack stands. **NEVER WORK UNDER AN UNSUPPORTED VEHICLE!** Remove the front tires.
2. Remove the factory differential skid plate and discard. If the truck is equipped with the optional **ALUMINUM** bumper to crossmember skid plate, remove it and save along with the hardware. If it is equipped with factory black **STEEL** skid plate, remove and discard, it will not go back onto the vehicle.
3. Disconnect the tie rod ends from the steering knuckle by striking the knuckle to dislodge the tie rod end (loosen the jam nut before removing from the knuckle). **USE CARE NOT TO DAMAGE THE THREADS ON THE TIE ROD END WHEN REMOVING.** Save the hardware.
4. Locate the sway bar end links and remove from the factory lower control arms, do not remove from the sway bar. Save the end links hardware.
5. Working from the driver side of the truck, remove the brake caliper and place it next to the frame. **DO NOT HANG THE BRAKE CALIPER FROM THE BRAKE HOSE.** Retain the hardware for reinstallation. Remove the brake rotor and save. Unplug the ABS wire at the plug next to the upper control arm and remove all the ABS line clips. Remove the ABS line bracket from the backside of the spindle and save along with the hardware. **USE CARE WHEN DISCONNECTING THE ABS SENSOR FROM THE FACTORY KNUCKLE.**
6. Remove the cotter pin and nut from the C.V. Axle at the spindle and save the nut and discard the cotter pin.
7. Remove both upper and lower ball joint nuts and save. Using a large hammer strike the spindle to dislodge the ball joints from the spindle. Remove the spindle from the upper ball joint first than the C.V. axle from the hub bearing, than from the lower ball joint. **USE CARE TO NOT DAMAGE THE THREADS ON THE BALL JOINTS WHEN REMOVING.**
8. Remove the hub assembly from the stock spindle and save along with the hardware. Discard the spindle.
9. Remove the three upper strut assembly bolts from the truck and save. Remove the lower shock bolt and save. Remove the strut assembly from the truck and save. **The factory shock assembly will be reused with the 6" Basic System.**
10. Remove the C.V. Shaft from the differential. Save the shaft and the hardware.
11. Remove the lower control arm from the factory pivots and discard the factory alignment cams.
12. Repeat steps five through eleven on the passenger side of the truck.
13. Working on both sides of the truck, remove the factory rear crossmember from the truck and discard the crossmember and hardware. SEE PHOTO BELOW.

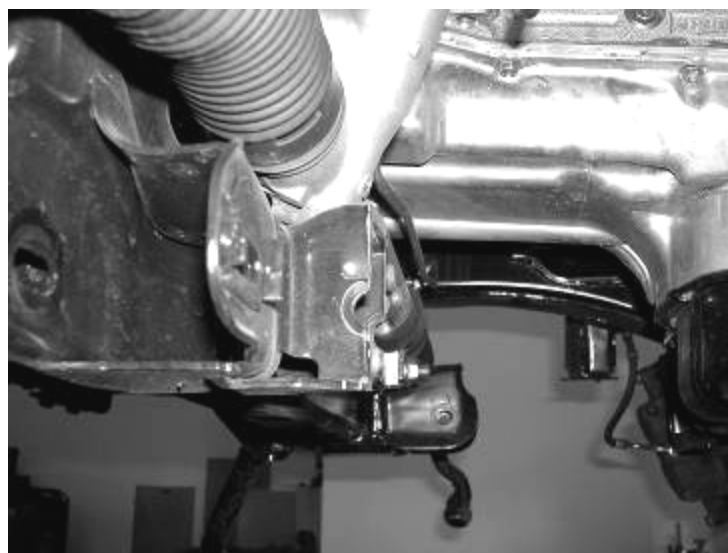
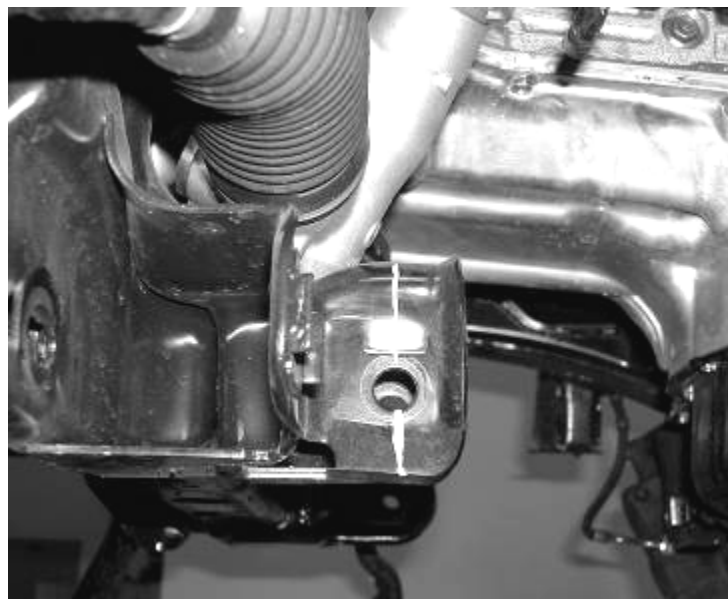


14. Disconnect the front drive shaft from the front differential and save the hardware. Disconnect the vent hose from differential.
15. Remove the front differential from the truck and discard the factory hardware.
16. Locate the factory differential mount next to the driver side rear lower control arm pocket. Cut a 4 ½" by 2" section of

the frame mount from the truck. **(this cut must be made on 4wd and 2wd trucks)** SEE THE PHOTOS BELOW & ON NEXT PAGE FOR EXACT LOCATION.



17. Locate the driver side front differential mount and cut 1" off the end of the mount on the frame. SEE PHOTOS BELOW



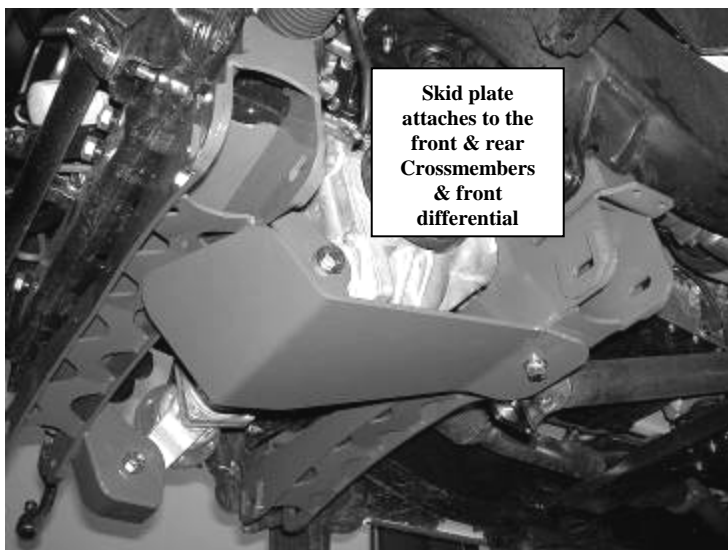
18. Locate FT60047 Front Crossmember. Using the supplied 9/16" x 4 1/2" bolts, nuts, and washer attach the crossmember to the factory front lower control arm pockets. Leave loose at this time.
19. Reinstall the front differential back into the truck attaching the two front differential mounts on the differential to the new crossmember using the supplied 9/16" x 4" bolts, nuts, and washers on the passenger side diff mount and the supplied 9/16" x 4 1/2" bolt, nut, and washer on the driver side. Leave loose at this time. Using a HEAVY DUTY ratchet strap to support the rear of the differential as high as possible into the truck at this time.
20. Locate FT60048 Rear crossmember and attach to factory lower control arm pockets using the supplied 9/16" x 4 1/2" bolts, nuts, and washer. Leave loose at this time.
21. Lower the rear of the front differential down into the rear mount of the new rear crossmember. Attach the rear differential to the crossmember using the supplied 9/16" x 4

½” bolt, nut, and washers and FT97150-6-106 spacer. The spacer will be placed to the rear of the factory differential mount. Leave loose at this time. Remove the ratchet strap from the truck. SEE THE DIAGRAM ON THE LAST PAGE.

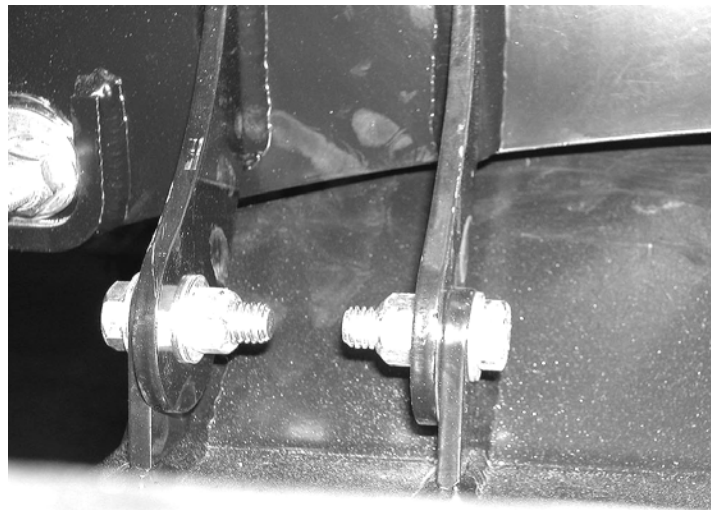
**FOR 4WD TRUCKS, FOLLOW STEP #22**

**FOR 2WD TRUCKS, FOLLOW STEP # 23**

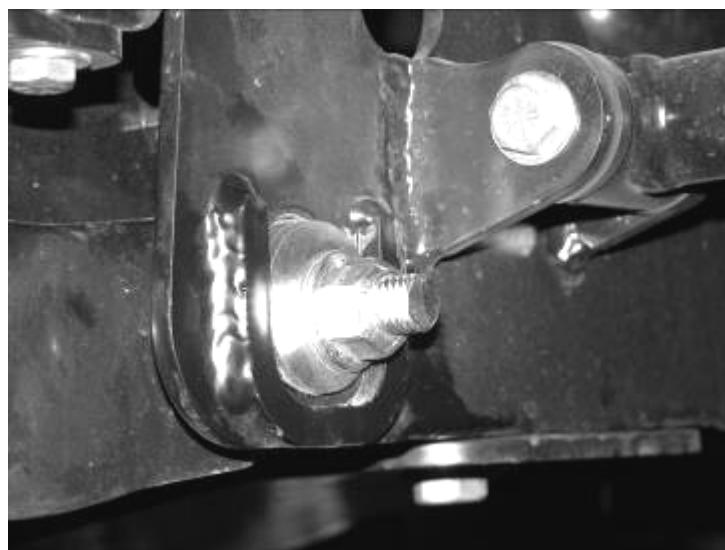
22. Remove the previously installed driver front differential bolt. Locate FT60008 skid plate and install over the driver front differential mount and reattach using the same 9/16” bolt. Attach the rear of the skid plate to the rear crossmember using the supplied ½” x 1 ½” bolt, split washer, and flat washer. SEE PHOTO BELOW.



23. Locate FT60008 skid plate and install over the driver front differential mount and attach using the two supplied 9/16” x 1 ¼” bolts and hardware. Attach the rear of the skid plate to the rear crossmember using the supplied ½” x 1 ½” bolt, split washer, and flat washer. SEE PHOTO BELOW



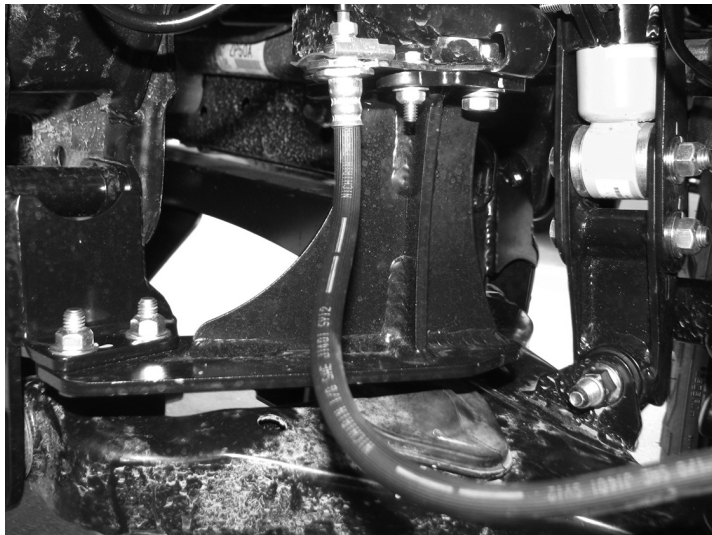
24. Locate the previously removed factory lower control arms. Attach them to the new crossmembers using the Supplied FT60026 alignment cams. When installing the alignment cams make sure they are in the middle of their adjustment. Once the cams are installed into the crossmember and tighten. SEE PHOTO BELOW.



25. Torque the differential mount bolts to 90 ft. lbs. Torque the crossmember to frame bolts to 90 ft. lbs. Torque the ½” bolt on the skid plate to 55 ft. lbs. Reattach the front drive shaft to the differential and torque the bolts to 65 ft. lbs. Use a small amount of the supplied thread locking compound on the drive shaft bolts.
26. Locate FT60032 passenger & FT60031 driver bump stop mount. Using the supplied 3/8” x 1 ¼” bolt, nuts, and washers attach the mount to the rear crossmember. Once attached, mark the upper hole where the bump stop bracket meets the frame and drill a 3/8” hole. Using the supplied FT60014 nut tab and 3/8”x 1 ¼” bolts, flat washer, and split washer, attach the bump stop to the frame. Torque bolts to 30 ft-lbs. SEE PHOTOS BELOW



Picture showing where to install the nut tab into the frame



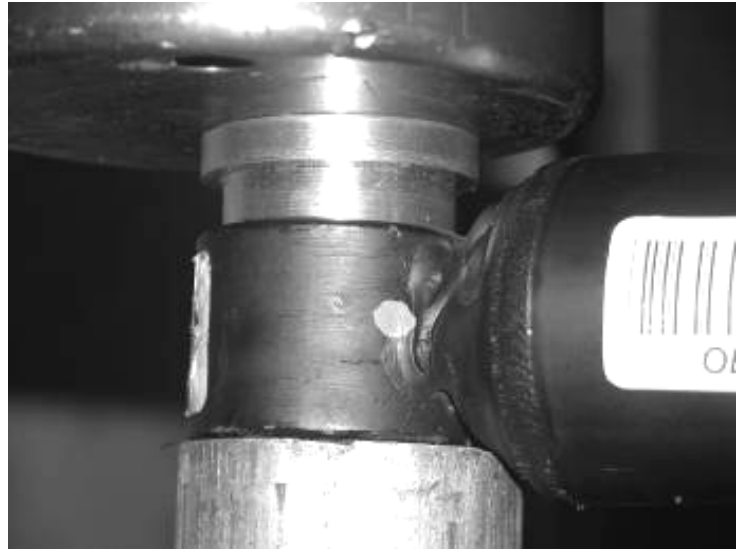
27. Working from the driver side of the truck, locate the previously removed C.V. shaft and attach to the differential.
28. Locate the factory coilovers. Using a press, CAREFULLY press out the sleeve and the bushing from the bottom of the coilover and save. SEE PHOTOS ON NEXT PAGE



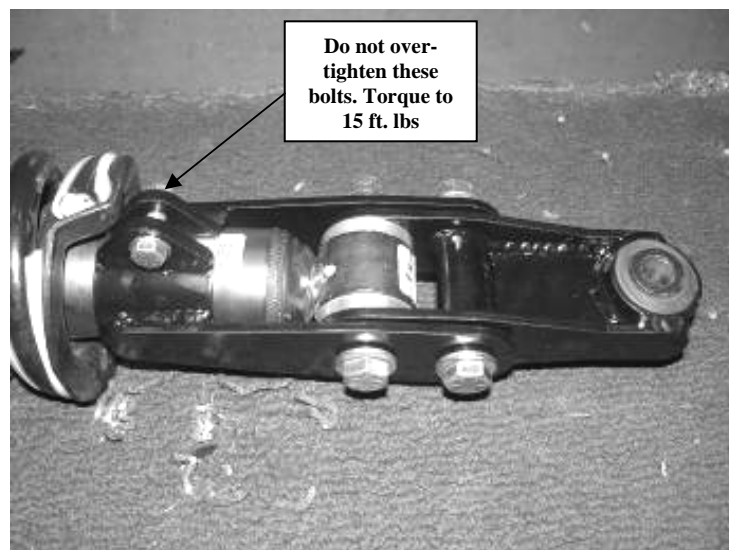




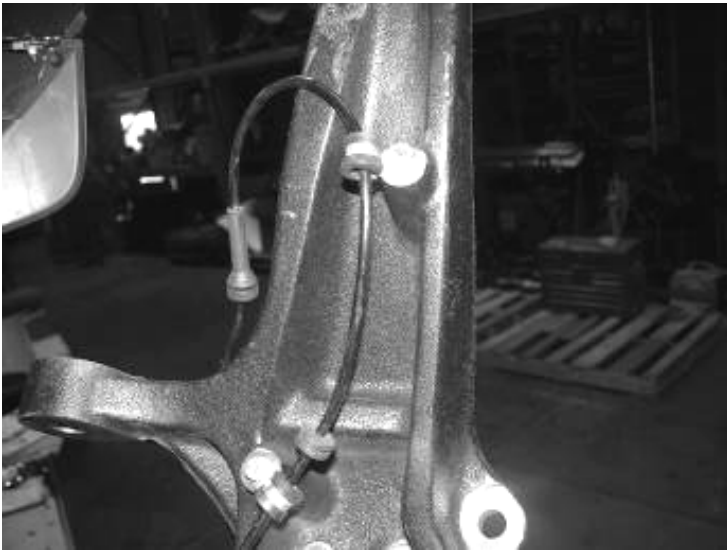
29. Locate FT60035 Shock Extensions upper & FT60036 Shock Extensions lower, FT60034 Aluminum Bushings, & Hardware Kit. Using a press, press the factory bushings and sleeves (with the provided lube) into the lower shock extension. Next, use the press to insert the Aluminum Bushings into the bottom of the factory shock. SEE PHOTOS BELOW & ON NEXT PAGE



30. Place the Shock Brackets around the bottom of the shock and align with the aluminum sleeves. Position the shock extension over the brackets and also align with the aluminum sleeves. Locate the supplied  $\frac{1}{2}$ " x 3- $\frac{1}{2}$ " bolts and hardware and install through the aluminum bushing and the shock mount. Leave loose. Locate the  $\frac{5}{16}$ " x 1- $\frac{1}{2}$ " bolts and hardware and install into the shock brackets. Tighten the  $\frac{5}{16}$ " hardware so the brackets are evenly spaced on the shock. Torque to 20 ft-lbs. Torque the  $\frac{1}{2}$ " hardware to 75 ft-lbs. SEE PHOTOS BELOW & ON NEXT PAGE.



31. Install the complete shock assembly into the truck attaching the three upper bolts first using the original hardware, leave loose. Rotate the bottom of the shock to align with the lower mount on the lower control.
32. Locate FTS60029D steering knuckle and install the previously removed bearing assembly using the original hardware along with a small amount of the supplied thread locking compound on each of the bolts. Torque the bearing bolts to 90 ft. lbs. Make sure the hub assembly with the dust shield is in the same position as it was on the factory knuckle.
33. Attach the steering knuckle (with the bearing assembly installed) to the truck, first attaching it to the lower ball joint using the original hardware. Then rotate the knuckle upwards to insert the CV axle shaft and attach the shock assembly to the stock mount on the lower control arm with the factory hardware. Attach to the upper ball joint using the original hardware. Torque the lower ball joint nut to 70 ft. lbs and the upper ball joint nut to 58 ft. lbs. Use one of the supplied small cotter pins to secure the upper ball joint nut. **When installing the knuckle onto the truck make sure to push the C.V. axle end through the bearing assembly before attaching the upper ball joint.**
34. Using the original C.V. Axle nut attach the axle to the bearing assembly. Torque to 160 ft. lbs. Using one of the supplied larger cotter pin to secure the bolt.
35. Working from both sides of the truck, route the ABS line up the back of the knuckle and attach using the supplied adel clamps &  $\frac{1}{4}$ " hardware, then up to the ABS bracket on the frame, then finally connect it to the plug on the frame. SEE PHOTO BELOW.



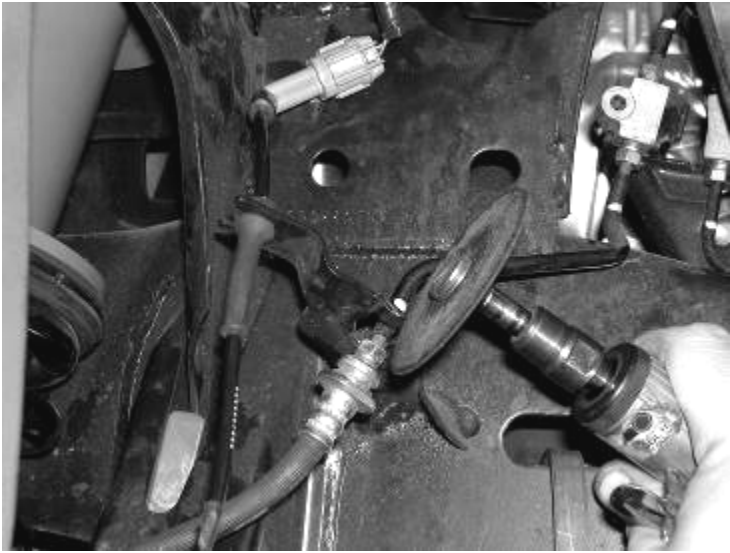
36. Working from the driver side, FT60037 Sway Bar Extension Mount and provided 1/2" hardware. Place the on the lower control arm with the sway bar bracket on the inside of the arm where the factory end link was attached and attach it with the 1/2" hardware. Torque to 75 ft. lbs. SEE PHOTOS BELOW.



37. Locate the factory Sway Bar End Link and install to the new extension bracket as shown in the photo. SEE PHOTO IN NEXT COLUMN.

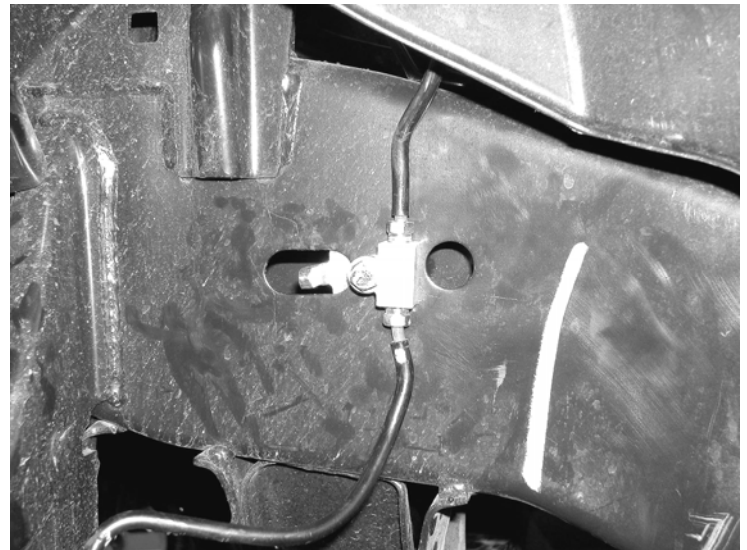
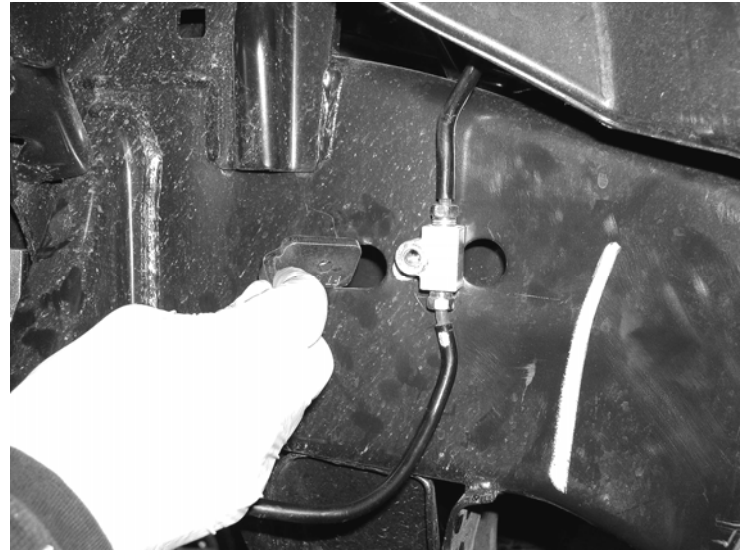


38. Repeat step thirty-five & thirty-six on passenger side of vehicle.
39. Locate the brass brake line union mounted on top of the frame. Remove the bolt attaching to the frame mount and discard the bolt. CAREFULLY pull the hard line 4" down on the frame
40. Locate the brake line tab where the soft line meets the hard line. Remove the clip that attaches the line to the frame and discard. Using a die grinder with a cut off wheel CAREFULLY cut the tab so the line can be removed from the mount. SEE PHOTO BELOW.



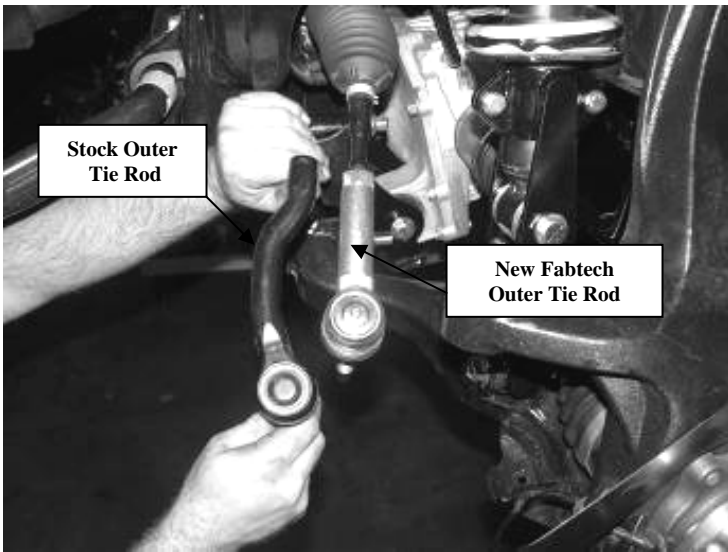
41. Reinstall the original brake rotor, followed by the brake caliper. Use a small amount of the supplied thread lock compound on the caliper bolts and torque to 100 ft. lbs.

42. Locate FT60033 Front Brake Hose Tab, and supplied 1/4" hardware. Using the supplied 1/4" x 1" bolt & hardware, attach the brake hose tab to the Fabtech bump stop mount. Then attach the brake hose to the new tab with the factory clip. SEE PHOTO ON NEXT PAGE.



43. Using a drill with a 1/4" drill bit, drill a 1/4" hole into the frame just behind the large oval hole in the frame. Locate FT60020 Brake Line nut tab and attach the brake line union to the frame using the supplied 1/4" x 1 1/4" bolt and flat washer. SEE PHOTOS BELOW.

44. Locate FT60030 outer tie rods. Remove the factory outer tie rods and discard, leaving the factory jam nut on the inner tie rod. Install the new outer tie rod onto the inner tie rod until it makes contact with the jam nut. Attach new tie rod end to the knuckle with the supplied nut and torque to 40 lbs. (**This is just a starting point; a final alignment must be performed upon completion of suspension system**). SEE PHOTO BELOW.



45. Locate FT70011 Impact tubes and install two bushings and one sleeve into each end on the impact tube. Using the supplied 7/16" x 3 1/2" bolts, nuts, and washers attach the impact tubes to the rear crossmember. Leave loose at this time.

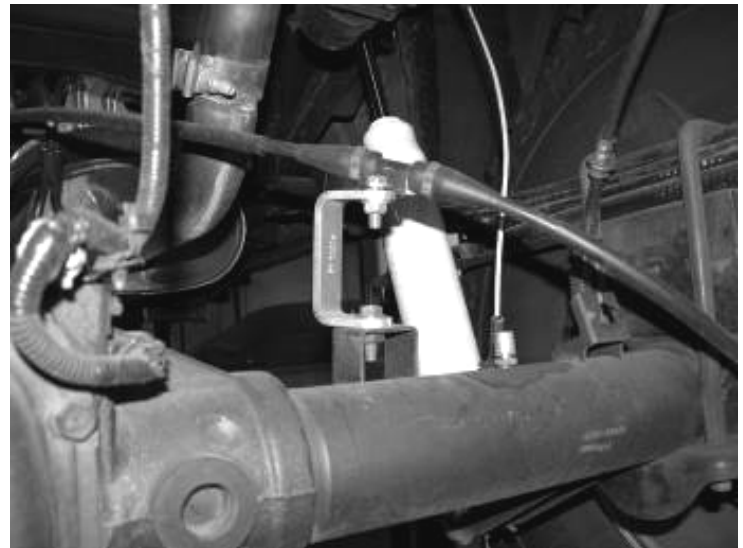
46. Locate FT30064 Impact tube mounts and attach them to the other end of the impact tubes using the supplied 7/16" x 3 1/2" bolts, nuts, and washers. Raise the impact tube with the mount up to the transmission crossmember and mark the hole. Using a drill with a 1/2" drill bit, drill completely through the crossmember. Using the supplied 1/2" x 2 1/2" bolts, nuts, and washers attach the mounts to the frame. SEE PHOTO BELOW.

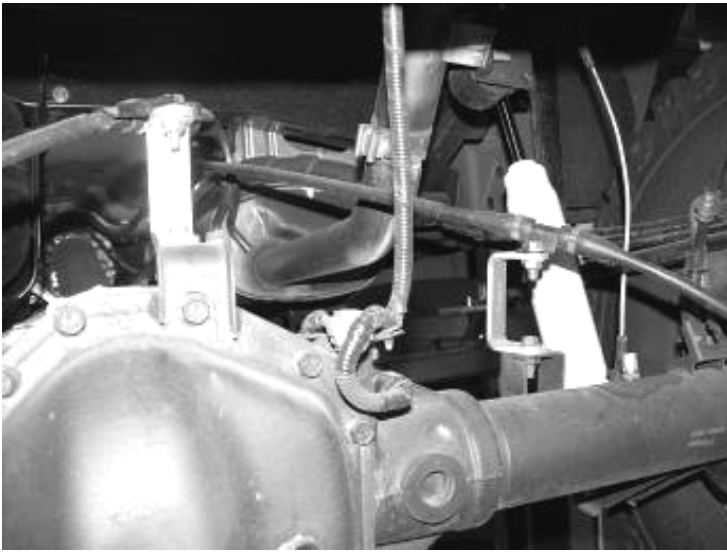


**Double Check All Nuts And Bolts Are Now Tight Before Proceeding To The Rear.**

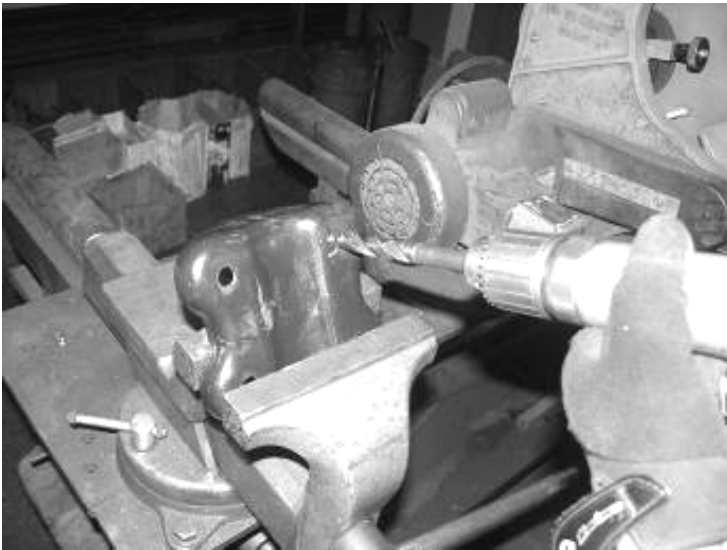
## REAR SUSPENSION INSTRUCTIONS:

47. Jack up the rear end of the vehicle and support the frame rails with jack stands. Block the front wheels. Release the parking brake at this time. Supporting the rear differential with a floor jack, do not allow the axle to hang freely. Remove both of the rear brake lines from their brackets.
48. Locate the two factory brake line mounts on the axle. Remove the factory cover bracket and discard. Remove the brake line bracket from the axle and discard the hardware. Locate the supplied brake line brackets FT70014 and attach to the axle using the factory hardware. Using the supplied 1/4" x 1 1/4" bolts, nuts, and washers, attach the brake line to the new Fabtech bracket. Using one of the supplied zip ties attach the ABS line as shown below. Check the ABS line on the other side of the truck for proper clearance at this time also. SEE PHOTOS IN NEXT COLUMN.





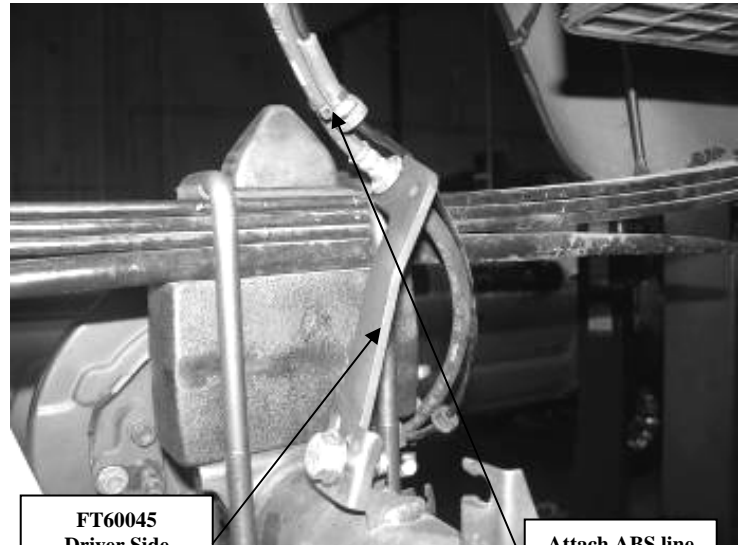
49. Remove the rear shocks and u-bolts, and lower the axle down. **USE CARE NOT TO OVER EXTEND THE BRAKE LINES.** Discard the stock shocks and u-bolts. The factory leaf spring saddles will need to be drilled out to 9/16" to accommodate the new U-Bolts. SEE PHOTO BELOW.



50. Locate and install the 4" rear lift blocks. The short end of the block should face to the front of the vehicle. Using the provided U bolts, nuts, and washers align axle, lift blocks, and springs, stock bump stop and torque the U-Bolts to 90lbs.
51. Install the new Fabtech shocks (not included with the kit) and Torque to 65 lbs using factory hardware on the upper and the supplied 1/2" hardware on the lower mounts.

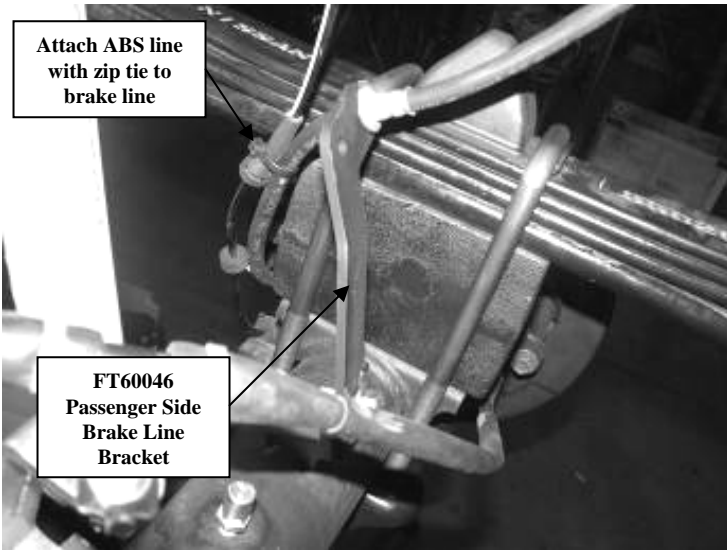
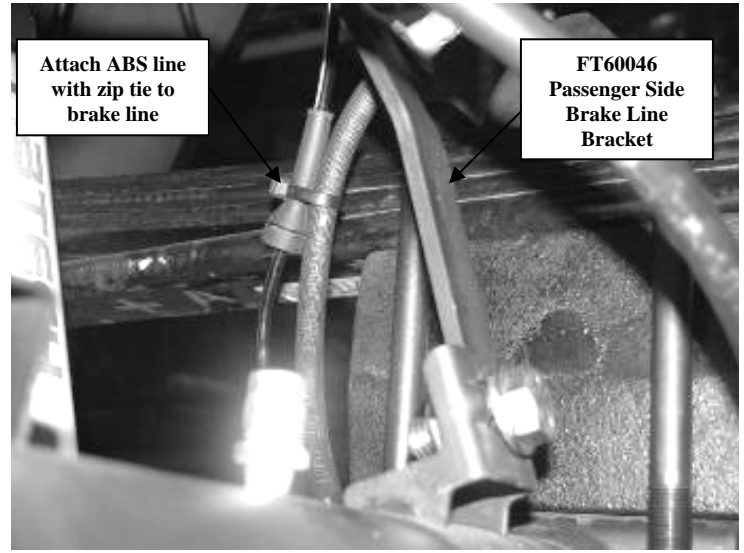
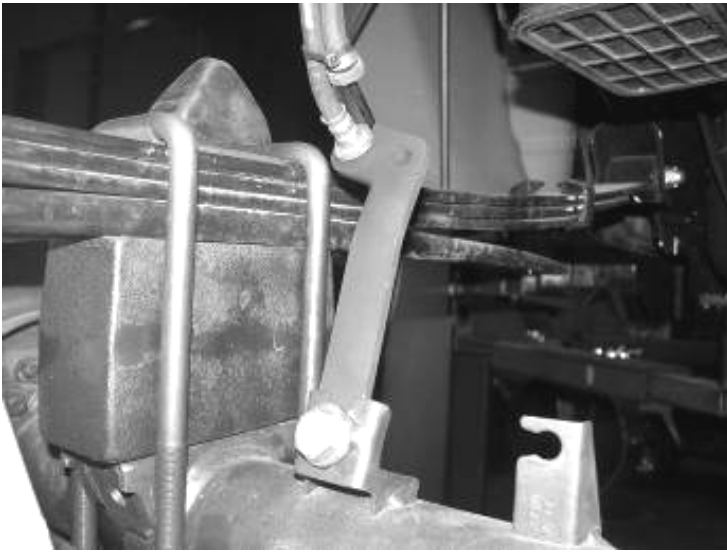


52. Locate FT60045 (drv) & FT60046 (pass) Rear Brake Line Bracket and the supplied 1/2" hardware. Position the bracket in the factory line mount and attach the new bracket with the 1/2" hardware (with the bracket mounted, the bent part of the bracket faces toward the front of the truck). Insert the brake line and secure it with the factory c-clip. Attach the ABS line to the brake hose with the supplied zip ties. SEE PHOTOS BELOW & IN NEXT COLUMN.



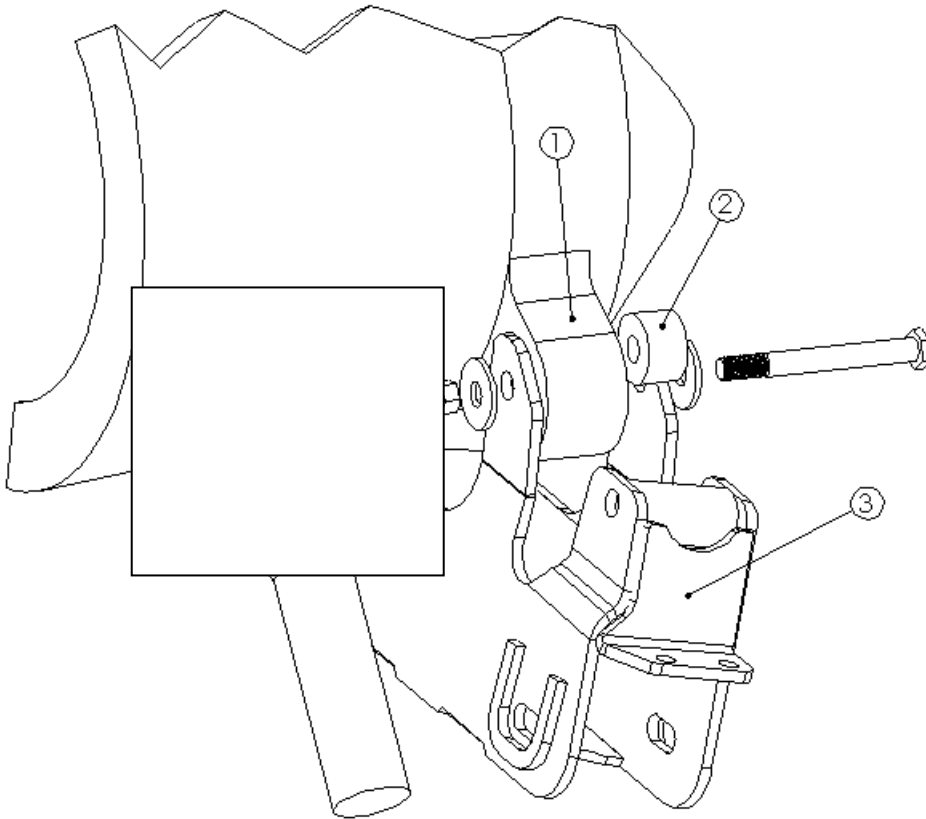
**FT60045  
Driver Side  
Brake Line  
Bracket**

**Attach ABS line  
with zip tie to  
brake line**



53. Recheck all bolts for proper torque. Recheck the front and rear brake hoses and ABS lines for proper clearances.
54. Install tires and wheels and torque lug nuts to wheel manufacturer's specifications. Turn front tires left to right and check for appropriate tire clearance. Note-Some oversized tires may require trimming of the bumper and valance.
55. Check the front-end alignment and set to the factory specifications. Torque ALL control arm bolts to 75ft. lbs.
56. Check front differential fluid level due to CV Shaft removal.
57. Adjust the front headlights to the proper angle.

| ITEM# | QTY. | DESCRIPTION          |
|-------|------|----------------------|
| 1     | 1    | FRONT DIFFERENTIAL   |
| 2     | 1    | FT97150-6-106 SPACER |
| 3     | 1    | FT60003 CROSSMEMBER  |



**RETORQUE ALL NUTS, BOLTS AND LUGS AFTER 50 MILES AND PERIODICALLY THEREAFTER.**

For technical assistance call: 909-597-7800

**Product Warranty and Warnings-**

Fabtech provides a Limited Lifetime Warranty to the original retail purchaser who owns the vehicle, on which the product was originally installed, for defects in workmanship and materials.

The Limited Lifetime Warranty excludes the following Fabtech items; bushings, bump stops, ball joints, tie rod ends, limiting straps, cross shafts, heim joints. These parts are subject to wear and are not considered defective when worn. They are warranted for 60 days from the date of purchase for defects in workmanship.

Take apart shocks are considered a serviceable shock with a one year warranty on leakage only. Service seal kits are available separately for future maintenance. All other shocks are covered under our Limited Lifetime Warranty.

Fabtech does not warrant any product for finish, alterations, modifications and/or installation contrary to Fabtech's instructions. Alterations to the finish of the parts including but not limited to painting, powdercoating, plating and/or welding will void all warranties. Some finish damage may occur to parts during shipping which is considered normal and is not covered under warranty.

Fabtech products are not designed nor intended to be installed on vehicles used in race applications or for racing purposes or for similar activities. (A "RACE" is defined as any contest between two or more vehicles, or any contest of one or more vehicle against the clock, whether or not such contest is for a prize). This warranty does not include coverage for police or taxi vehicles, race vehicles, or vehicles used for government or commercial purposes. Also excluded from this warranty are sales outside of the United States of America.



Installation of most suspension products will raise the center of gravity of the vehicle and will cause the vehicle to handle differently than stock. It may increase the vehicle's susceptibility to a rollover, on road and off road, at all speeds. Extreme care should be taken to operate the vehicle safely at all times to prevent rollover or loss of control resulting in serious injury or death. Fabtech front end Desert Guards may impair the deployment or operation of vehicles equipped with supplemental restraining systems/air bag systems and should not be installed if the vehicle is equipped as so.

Fabtech makes every effort to ensure suspension product compatibility with all vehicles listed in the catalog, but due to unknown auto manufacturers production changes and/or inconsistencies by the auto manufacturer, Fabtech cannot be responsible for 100% compatibility, including the fitment of tire and wheel sizes listed. The Tire and Wheel sizes listed in Fabtech's catalog are only a guideline for street driving with noted fender trimming. Fabtech is not responsible for damages to the vehicle's body or tires.

Fabtech's obligation under this warranty is limited to the repair or replacement, at Fabtech option, of the defective product only. All costs of removal, installation or re-installation, freight charges, incidental or consequential damages are expressly excluded from this warranty. Fabtech is not responsible for damages and/or warranty of other vehicle parts related or non related to the installed Fabtech product. This warranty is expressly in lieu of all other warranties expressed or implied. This warranty shall not apply to any product that has been subject to accident, negligence, alteration, abuse or misuse as determined by Fabtech.

Fabtech suspension components must be installed as a complete system including shocks as shown in our current catalog. All warranties will become void if Fabtech parts are combined and/or substituted with other aftermarket suspension products. Combination and/or substitution of other aftermarket suspension parts may cause premature wear and/or product failure resulting in an accident causing injury or death. Fabtech does not warrant products not manufactured by Fabtech.

Installation of Fabtech product may void the vehicles factory warranty; it is the consumer's responsibility to check with their local vehicle's dealer for warranty disposition before the installation of the product.

It is the responsibility of the distributor and/or the retailer to review all warranties and warnings of Fabtech products with the consumer prior to purchase.

Fabtech reserves the right to supercede, discontinue, change the design, finish, part number and, or application of parts when deemed necessary without written notice. Fabtech is not responsible for misprints or typographical errors within the catalog or price sheet.