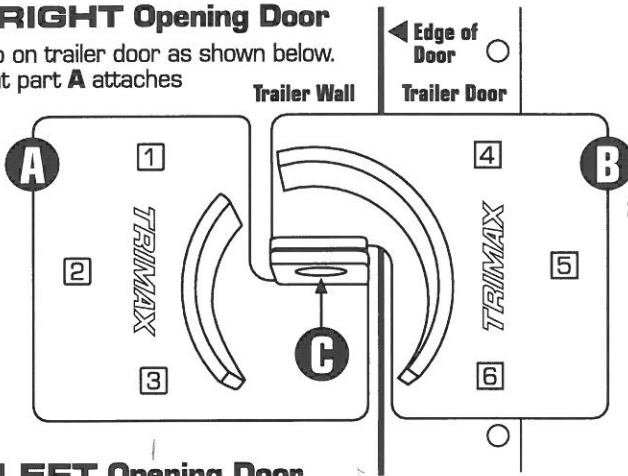


Installing To A RIGHT Opening Door

1. Align 2 piece hasp on trailer door as shown below. It is important that part **A** attaches to trailer wall and part **B** attaches to the door.

NOTE: Reversing **A** & **B** will interfere with the opening and closing of the door.



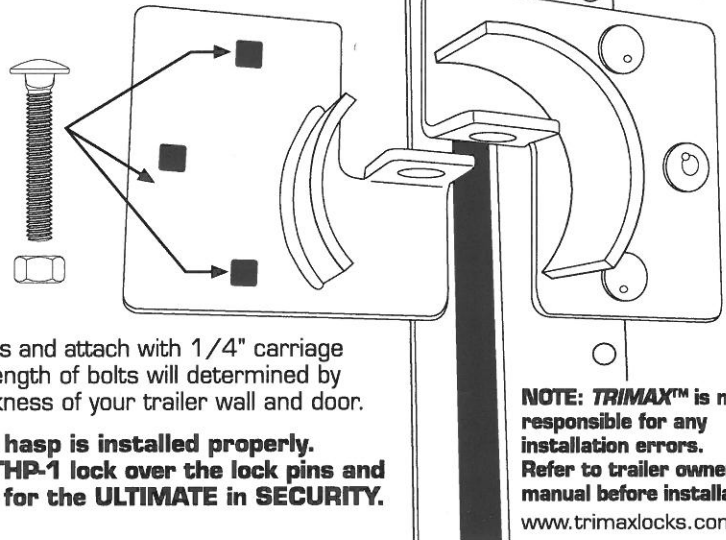
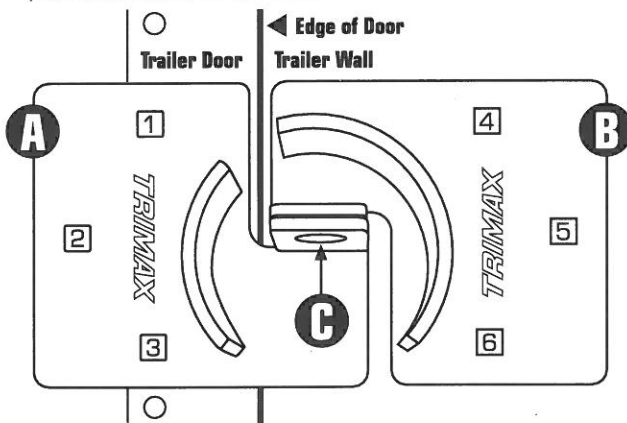
MODEL #
THSP2C

2. When hasps **C** are aligned, mark all 6 holes for drilling.

If hasps are not aligned when the door is closed, the Internal Shackle of the THP-1 Hockey Puck Lock will not be able to close.

Installing To A LEFT Opening Door

1. Align 2 piece hasp on trailer door as shown below. It is important that part **B** attaches to trailer wall and part **A** attaches to the door.



3. Drill holes and attach with 1/4" carriage bolts. Length of bolts will determined by the thickness of your trailer wall and door.

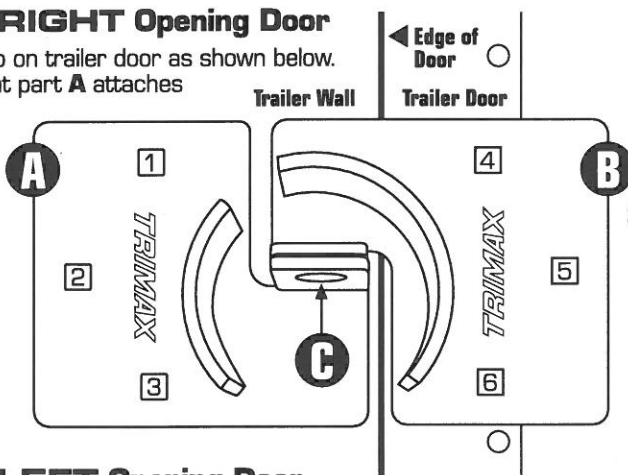
When the hasp is installed properly. Slide the THP-1 lock over the lock pins and close lock for the **ULTIMATE** in SECURITY.

NOTE: TRIMAX™ is not responsible for any installation errors. Refer to trailer owners manual before installation.
www.trimaxlocks.com

Installing To A RIGHT Opening Door

1. Align 2 piece hasp on trailer door as shown below. It is important that part **A** attaches to trailer wall and part **B** attaches to the door.

NOTE: Reversing **A** & **B** will interfere with the opening and closing of the door.



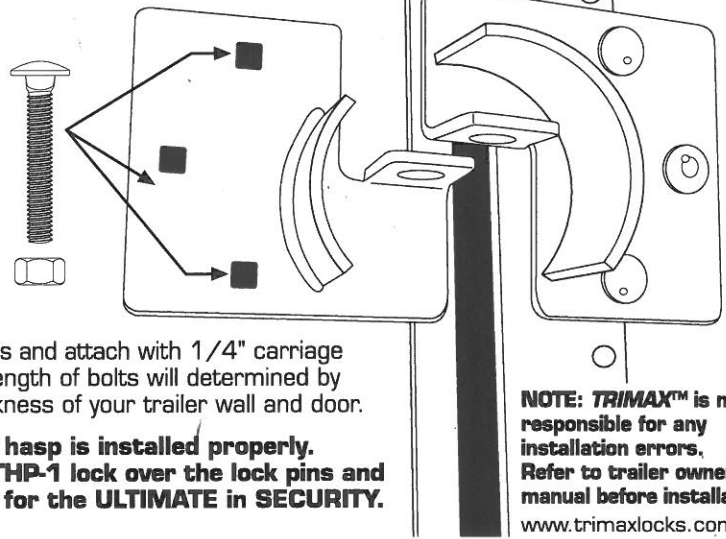
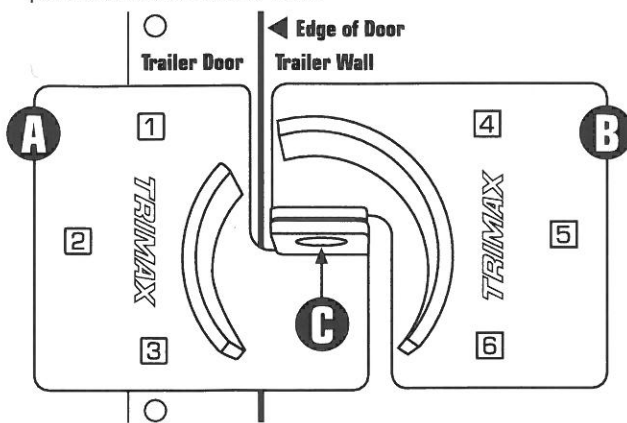
MODEL #
THSP2C

2. When hasps **C** are aligned, mark all 6 holes for drilling.

If hasps are not aligned when the door is closed, the Internal Shackle of the THP-1 Hockey Puck Lock will not be able to close.

Installing To A LEFT Opening Door

1. Align 2 piece hasp on trailer door as shown below. It is important that part **B** attaches to trailer wall and part **A** attaches to the door.



3. Drill holes and attach with 1/4" carriage bolts. Length of bolts will determined by the thickness of your trailer wall and door.

When the hasp is installed properly. Slide the THP-1 lock over the lock pins and close lock for the **ULTIMATE** in SECURITY.

NOTE: TRIMAX™ is not responsible for any installation errors. Refer to trailer owners manual before installation.
www.trimaxlocks.com