



# Rock Crawler Front

## Grille Guard Black

Part No. J002T

Fits: 2007 - Current

Jeep Wrangler JK (2 Door)

2007 - Current

Jeep Wrangler JK Unlimited (4 Door)



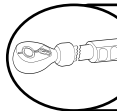
Without Hitch Receiver



REMOVE CONTENTS FROM BOX. VERIFY ALL PARTS ARE PRESENT.



READ INSTRUCTIONS CAREFULLY BEFORE STARTING INSTALLATION.



DO NOT OVER TORQUE. STANDARD OPERATING LOAD FOR TIGHTEN BODY MOUNT NUTS & BOLTS VARIES FROM 45 TO 65 FOOT POUND.



120-240 min



Cutting Not Required



Drilling Not Required

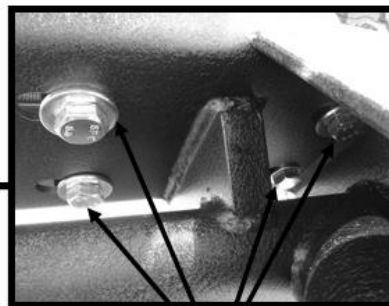


### PARTS LIST:

Qty	Part Description	Qty	Part Description
1	Front Rock Crawler Bumper	8	12mm lock Nuts
8	12-1.75mm x 35mm Hex Head Bolts	16	12mm Flat Washers

### INSTALLATION PROCEDURE

1. Remove the four bolts on the passenger side and the four bolts on the driver side securing factory bumper to the frame. Disconnect any wiring from the bumper and remove completely. **NOTE:** Use a zip tie to secure wiring under the hood.
2. Position the Rock Crawler Bumper onto vehicle and line up the holes on the bumper with holes on the frame.
3. Secure bumper to frame by using the included (8) 12-1.75mm Hex Head Bolts, (8) 12mm lock Nuts, and (16) 12mm Flat Washers (Figure 1). Do not fasten bolts at this time.
4. Level and adjust Front Bumper, then fasten all hardware at this time.
5. Do periodic inspections to the installation to make sure that all hardware is secure and tight.



12mm Hex Bolts,  
12mm Flat Washers,  
and 12mm lock Nuts

## PRODUCT CARE

- Periodically check the product to ensure all fasteners are tight and components are intact.
- Regular waxing is recommended to protect the finish of the product.
- **Use ONLY Non-Abrasive automotive wax.** Use of any soap, polish or wax that contains an abrasive is detrimental and can scratch the finish leading to corrosion.
- Aluminum polish may be used to polish small scratches and scuffs for **Stainless Steel finish.**
- Mild soap may be used to clean the product for both **Stainless Steel and Black finish.**

## FAQ's

**1. Hardware's are not of correct size.**

*In GMC / Chevrolet truck model 2006 & up, customer needs to reuse the factory body bolts to install the bracket. If your vehicle is not GMC / Chevrolet 2006 & up, ensure that holes are not partially covered with any plastic grommet or rust? If it is, remove the plastic grommet & rust from the thread holes & re-try the installation.*

**2. Mounting Bracket are not getting Installed properly.**

*In some cases Illustration images shown in Installation manual may not be the exactly same as per actual vehicle images ,also if Driver / Passenger side mounting brackets are very identical in the design, suggest referring Parts Identification guide to avoid fitment issue.*

**3. Products are thumping / rattling after installation.**

*Ensure that all required mounting brackets / hardware's are installed & tighten correctly. Suggest using white lithium / regular grease between the metal to metal contact surfaces.*

**4. Side Bar is not aligning with vehicle / Step Pads are not aligning with vehicle doors.**

*Side bar may be interchanged or mounting brackets are not installed at the correct position in the vehicle. Refer Parts identification guide.*

**5. Missing / Excess Hardware.**

*Recheck hardware count as per the part list.*

**6. Product not installing properly.**

*Ensure make model year, cab length and bed size of your vehicle is listed in the application. All installation steps are followed correctly.*