



# Advanced Gauge Display Monitor

## Instruction Manual P/N: 77-91001



### **DISTRACTED DRIVING AWARENESS:**

**DISTRACTED DRIVING IS UNLAWFUL. ALWAYS DRIVE IN ACCORDANCE WITH TRAFFIC LAWS AND IN A MANNER THAT IS APPROPRIATE AND SAFE FOR ROAD AND TRAFFIC CONDITIONS. ANY INTERACTION WITH THIS DEVICE SHOULD ONLY BE DONE WHILE YOUR MOTOR VEHICLE IS NOT IN MOTION AND IN A LOCATION PERMITTED BY LAW.**

**AFEPOWER IS NOT RESPONSIBLE FOR ANY INJURIES OR PROPERTY DAMAGE THAT MAY OCCUR AS A RESULT OF THE IMPROPER USE OF THIS DEVICE.**

Display  
Monitor



Magnetic  
Base



OBDII  
Plug



Windshield  
Mount



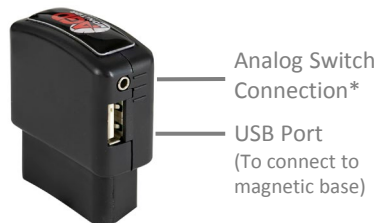
(2x) Cable  
Ties



2m USB Cable  
(To connect magnetic  
base to OBDII Plug)



1m USB Cable  
(To connect screen to  
computer for updates)



\* All ports may not be used depending on vehicle application and accessories.

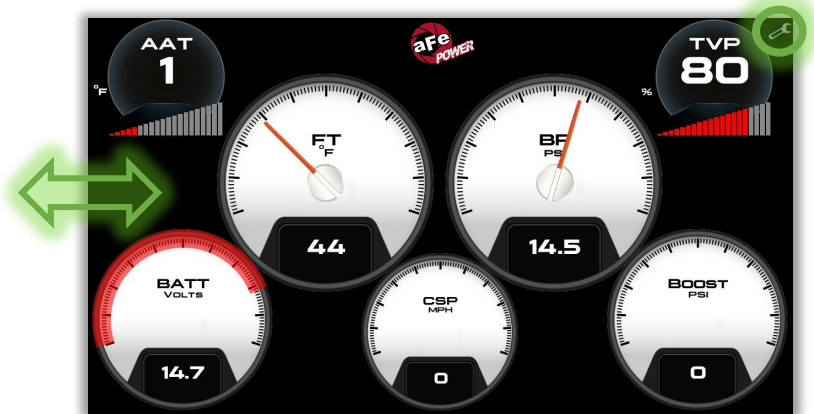
 We recommend to perform the installation while the vehicle is turned off.

1. Install the windshield mount in your desired location. Make sure it will not block or hinder your view in any way while driving.
2. Attach the magnetic base on the windshield mount. Connect the 2m USB cable to the magnetic base's Mini USB port.
3. Place the display monitor on the magnetic base.
4. Locate the OBDII data port under the dash and connect the OBDII plug.
5. Route the 2m USB cable from the magnetic base down to the OBDII plug.
6. Connect the 2m USB cable to the OBDII Plug. If necessary, use the supplied cable ties to secure the cable and to get it out of the way of any possible interference.
7. Verify all connections are secure. The installation of your AGD Monitor is now complete.



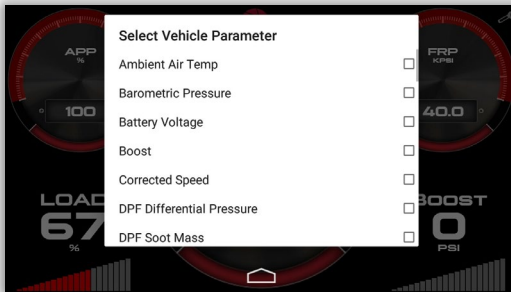
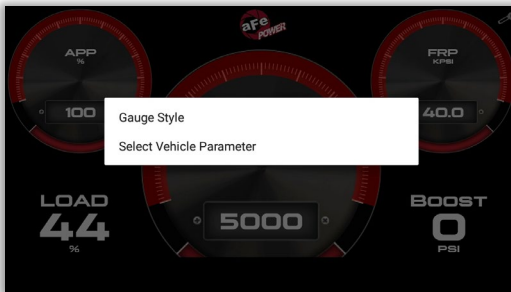
Your new AGD Monitor will turn on once you start your vehicle. The AGD Monitor will check and verify your VIN and then main screen will be displayed.

Tap the top right corner of the screen to access the Options menu.



Swipe left or right anywhere on the screen to change the screen layout.

Touch and hold the gauge you would like to change until the menu pops up, then select either the style or parameter you would like to adjust.



Swipe the screen left or right until you get to the Performance Screen layout.

With the vehicle at a complete stop, select the desired performance test (0 - 60 MPH / 0 - 100 MPH) located at the top of the screen

Once the vehicle starts moving, the test will start automatically and will stop once the target speed is reached.

(The two gauges on the right of the screen may be changed to show the desired vehicle parameters.)







Swipe the screen left or right until you get to the Driving Coach Screen layout.

The Driving Coach Screen will display your instantaneous fuel mileage so you can monitor your driving style to help maximize your fuel mileage.

(The three gauges at the bottom can be changed to show desired vehicle parameters.)

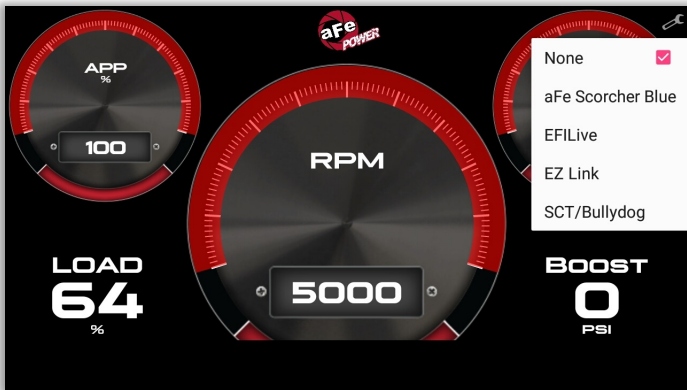


The Driving Coach Screen is only available on select vehicles.



## aFe Scorcher Blue and Third Party Tuners

Go to the Options menu and select Switch Setup. Select the aFe Scorcher Blue or the third-party tuner you have installed on your vehicle.



Note: Any tuner that needs to be wired into the ECM or sensors will still need to be connected with our adjustable switch cable (sold separately).

77-90006: aFe switch cable for EFILive - GM Diesel Truck 07.5-10 LMM

77-90007: aFe switch cable for EFILive - GM Diesel Truck 11-16 LML

Go to Options menu and select the Tire Size Calibrator (this will allow you to adjust your speedometer to read correctly when you are running different tire sizes).

Input the stock tire size that came on your vehicle, then input the new tire size. Once complete, tap the Confirm button.

The vehicle parameter “Corrected Speed” will now display your actual vehicle speed, while “Vehicle Speed” will show the uncorrected speed.”

A screenshot of the "Tire Size Calibrator" interface. The title "Tire Size Calibrator" is at the top. On the left is the AGD MONITOR logo. The interface has two rows of input fields. The first row is labeled "Stock Tire Size" and contains three input boxes with the values "235", "/65", and "R15". The second row is labeled "New Tire Size" and contains three input boxes with the values "255", "/70", and "R17". Below these is an example "(EX: 315 / 75 R 16)". On the right side, there are three stacked buttons: "Confirm", "Cancel", and "Units".

Tire Size Calibrator

AGD MONITOR

Stock Tire Size

235 /65 R15

New Tire Size

255 /70 R17

(EX: 315 / 75 R 16)

Confirm

Cancel

Units



Page left blank intentionally.

### **What should I do if my AGD will not power on?**

- Verify all connections, including the connection of the Display Monitor to the Magnetic Base as well as the OBDII Plug to the vehicle.

### **What should I do if my AGD stops working or if the display goes black?**

- Reboot the Display Monitor by pressing and holding the Power Button for three (3) seconds.

### **What should I do if my AGD powers off all of a sudden?**

- Verify all connections then reboot the Display Monitor by pressing and holding the Power Button for three (3) seconds.

### **What should I do if my AGD is stuck polling for my VIN?**

- Pull the Monitor off the magnetic base and reconnect.
- Verify connection to the USB cable.
- Disconnect OBDII Plug and connect again.

### **What should I do if a gauge becomes frozen?**

- Swipe left or right on the screen and go back to the original screen layout. The screen should reconnect.

For Tech Support  
Call 812-518-1220 (8am – 5pm CST)  
Or Email [Tech@afepower.com](mailto:Tech@afepower.com) (if possible, include photos or videos)



aFe POWER warrants the included hardware product and accessories against defects in materials and workmanship for one year from the date of original retail purchase. This warranty applies only to the original purchaser of the product and is non-transferrable. Proof of purchase of the aFe POWER product is required for all warranty claims. Warranty is valid provided aFe POWER instructions for installation and/or cleaning were properly followed. Proper maintenance with regular inspections of product is required to insure warranty coverage. Damage due to improper installation, failure to provide proper care and maintenance, accident, abuse, misuse, normal wear and tear, unauthorized repair or alteration is not warranted.

Additionally, Incidental or consequential damages or cost, including installation and removal of part, incurred due to failure of aFe POWER product is not covered under this warranty. All warranty is limited to the repair and/or replacement of the aFe POWER product. Incidental or consequential damage means any loss, expense, or other damage that cannot be remedied by either repairing any defect in the aFe POWER product or by replacing the aFe POWER product. Some states do not allow the exclusion or limitation of incidental or consequential damages, so the above limitations or exclusions may not apply to you. Furthermore, no individual or entity other than aFe POWER possesses the authority to alter the obligations, limitations, disclaimers, or exclusions under this warranty.

To request Return Goods Authorization (“RGA”), contact aFe POWER by completing and submitting the online technical support form at <https://afepower.com/contact/tech-warranty> or call +1(951)493-7100. Upon receipt of the RGA, you must return the product to the address provided in the RGA, freight prepaid and accompanied with a dated proof of purchase and the RGA. Upon receipt of the defective product and upon verification of proof of purchase, aFe POWER will either repair or replace the defective product within a reasonable time, not to exceed thirty days. aFe POWER has the right to deny any warranty believed to be false, altered or purchased through an unauthorized dealer.



**advanced FLOW engineering, inc.**

252 Granite Street, Corona, CA 92879

MAIN TEL: 951.493.7100 TECH: 812-518-1220

E-Mail: [Tech@aFepower.com](mailto:Tech@aFepower.com)