

INSTALLATION INSTRUCTIONS

2007-13 JEEP JK REAR ALUMINUM TUBULAR DOORS

PART# 25009

PARTS LIST:

Qty	Description	Qty	Description
1	Driver/Left Door	4	8mm Flat Washers
1	Passenger/right Door	2	Rubber Bushing
4	8mm Lock Nuts	2	Philips Head Sheet Metal Screws



PROCEDURE:

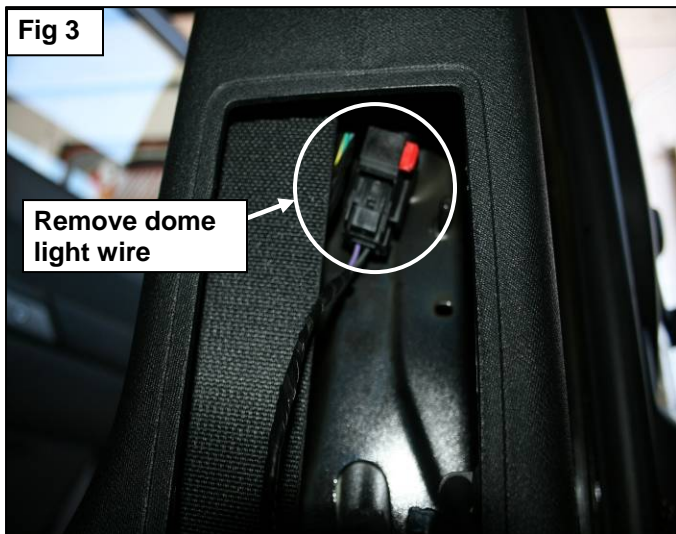
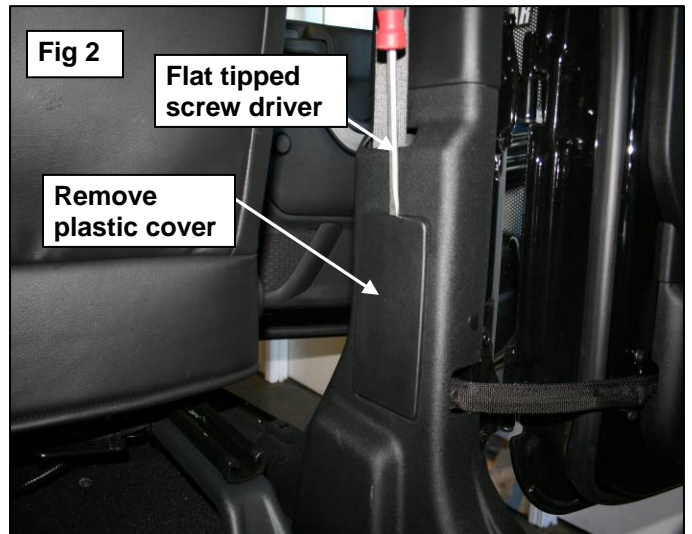
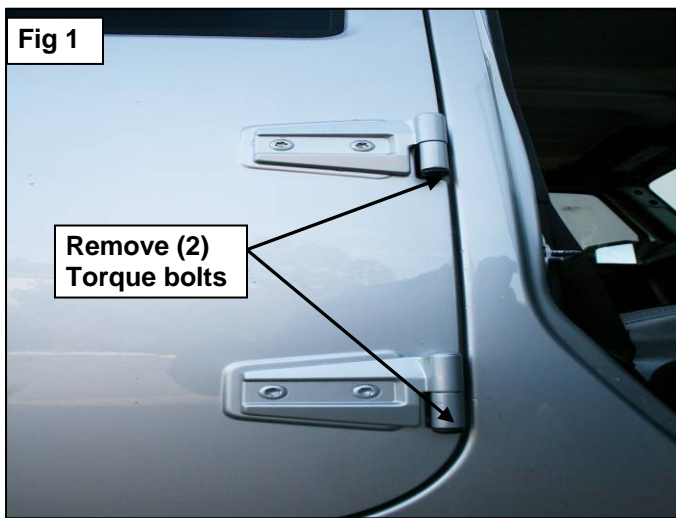
- 1. REMOVE CONTENTS FROM BOX. VERIFY ALL PARTS ARE PRESENT. READ INSTRUCTIONS CAREFULLY BEFORE STARTING INSTALLATION. NOTE:**
- Starting on the Rear Passenger side of vehicle remove the (2) factory 50mm Torque bolts securing the doors onto the hinges, as seen below in **(Fig 1)**. Locate the lower kick panel as seen in **(Fig 2)** remove the plastic cover with a flat tipped screw driver exposing the dome light wire harness disconnect wire by pulling the red clip back and unplugging the dome light wire from the harness as seen in **(Fig 3)** followed by removing the swing out safety strap, seen in **(Fig 4)**. Once removed lift off the door and place it off to the side.
- With the factory door removed select your new passenger/right side tubular door slide the door pins into the factory hinges & secure the doors with (2) 8mm Flat washers & (2) 8mm Lock Nuts as seen in **(Fig 5)** Snug the hardware but do not tighten at this time, before closing the door select the rubber bushing and attach to the inner tube with the Philips head sheet metal screw where the inner latch is on the door jam seen in **(Fig 6)**, check the alignment of the locking door latch with the striker plate inside the door jam of the vehicle seen in **(Fig 7)** (this may need to be adjusted so that the door closes completely) if it needs adjustment loosen the torque bolts on the door jam of the Jeep and align with the door latch on the tubular doors, once in alignment tighten the torque fasteners check to see that the door completely locks before continuing to the next step.

4. Repeat steps 2 through 3 for Driver/left side installation.
5. Do periodic inspections to the installation to make sure that all hardware is secure and tight.

To protect your investment, wax this product after installing. Regular waxing is recommended to add a protective layer over the finish. Do not use any type of polish or wax that may contain abrasives that could damage the finish.

For gloss black finishes: Mild soap may be used to clean the Product.

Passenger side shown



Passenger side shown

Fig 5



Fig 6

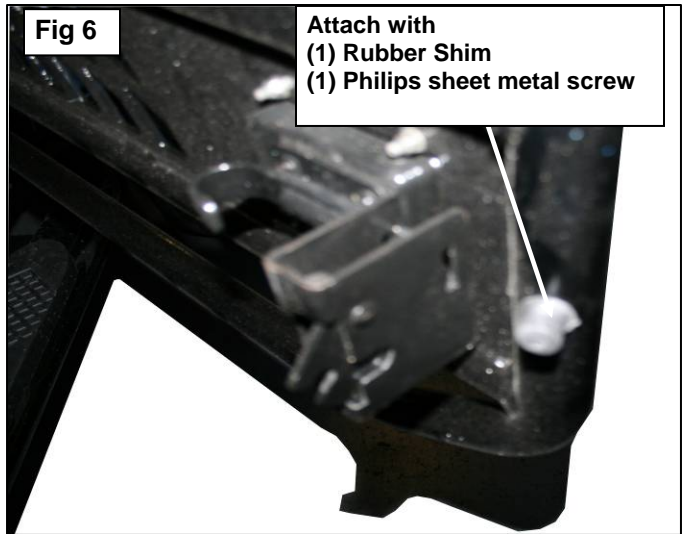
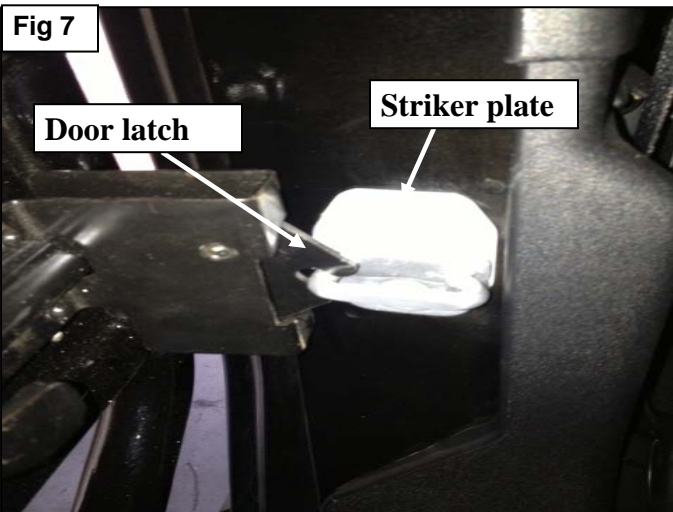


Fig 7



Complete installation

