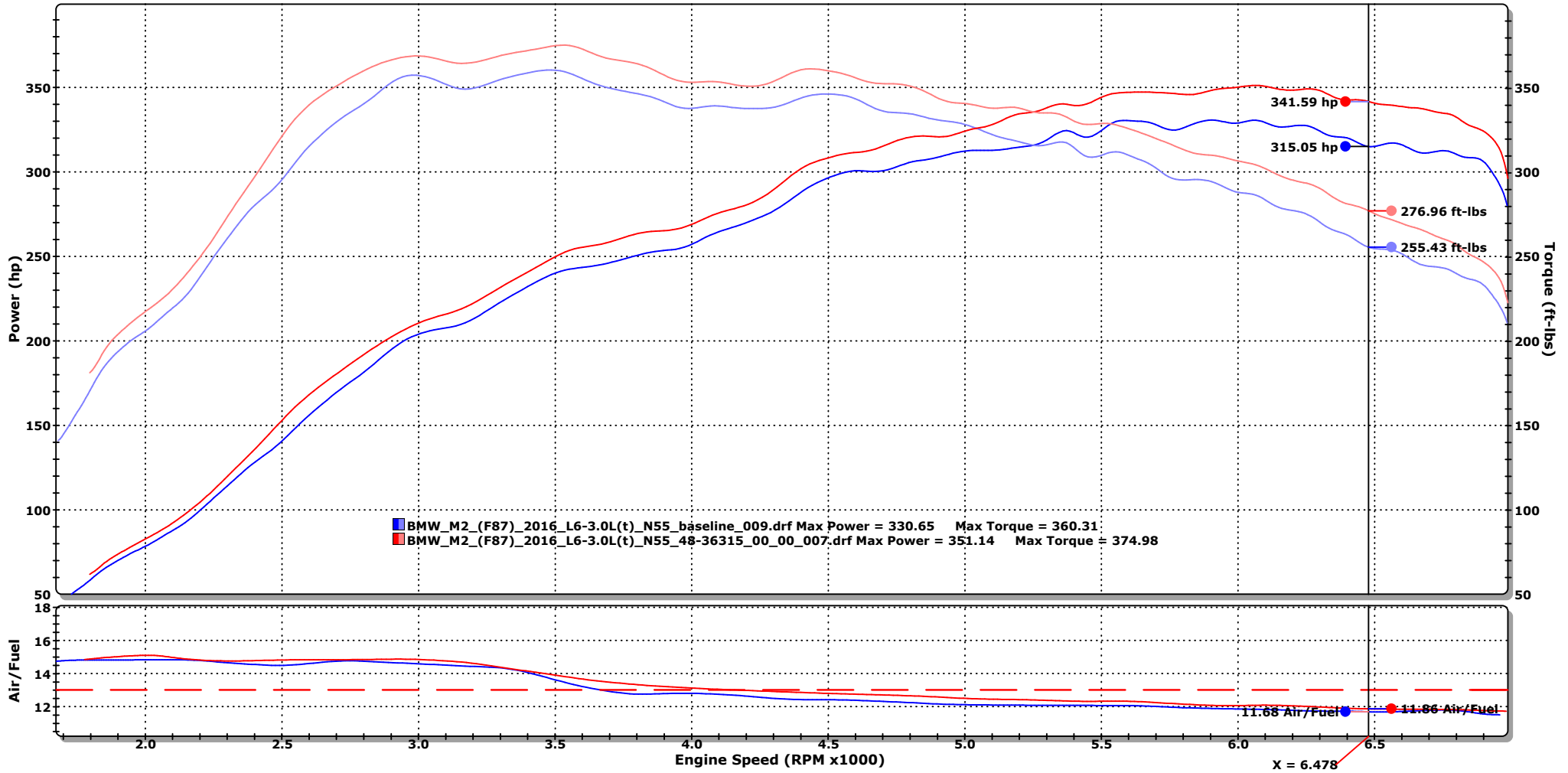




# ENGINEERED ADRENALINE

DYNOJET RESEARCH

CF: SAE Smoothing: 5



■ BMW\_M2\_(F87)\_2016\_L6-3.0L(t)\_N55\_baseline\_009.drf - 7/19/2016 9:29:54 AM Run Type: RO Run Conditions: 83.68 °F, 29.42 in-Hg, Humidity: 39%, SAE: 1.02  
 OE AIS, OE Exh  
 Max Power = 330.65 Max Torque = 360.31  
 OE Intake, OE Down Pipe, OE Exh, OE Wheels, Blower, Hood closed, Mode Sport +, 4th gear

■ BMW\_M2\_(F87)\_2016\_L6-3.0L(t)\_N55\_48-36315\_00\_00\_007.drf - 8/19/2016 2:00:55 PM Run Type: RO Run Conditions: 94.62 °F, 29.29 in-Hg, Humidity: 19%, SAE: 1.03  
 48-36315-HC  
 Max Power = 351.14 Max Torque = 374.98  
 OE Intake, aFe Down Pipe, OE Exh, OE Wheels, Blower, Hood closed, Mode Sport +, 4th Gear