



YOSHIMURA

RESEARCH & DEVELOPMENT OF AMERICA, INC.

5420 DANIELS STREET STE A, CHINO CA., 91786 · (800)634-9166 · (909)628-4722 · FACSIMILE (909)591-2198

www.yoshimura-rd.com

TRS OFF-ROAD PERFORMANCE EXHAUST

KAWASAKI / SUZUKI

03-05

KLX125 / DRZ125

2440500-SA STAINLESS STEEL FULL SYSTEM



THIS PRODUCT IS DESIGNED FOR USE IN CLOSED COURSE RACING AND IS NOT INTENDED FOR ANY OTHER USE.



CAUTION: The muffler packing on this system **MUST** be replaced every 6-8 hours of use, or after each moto. Failure to follow recommended muffler re-packing interval can cause muffler damage and may void the warranty.



NOTE: IN THE STATE OF CALIFORNIA, IT IS ILLEGAL TO MODIFY THE EMISSION CONTROL SYSTEM. WHICH INCLUDES THE CARBURETORS OF ANY VEHICLE.

Caution: Exhaust system can be extremely hot. Let motorcycle cool down before beginning installation.

Note: Read through all instructions before beginning installation.

Tools Needed:

10mm and 12mm Sockets
Ratchet and Extension
6mm Allen Socket
Torque Wrench

Installation Steps:

- 1 Remove right rear number plate. (See Fig. 1)
- 2 Remove muffler mount bolt. (See Fig. 2)
- 3 Loosen clamp and remove chassis mount bolt while supporting the muffler. Remove stock muffler from motorcycle. (See Fig. 3)
- 4 Remove header bolts and remove stock header from motorcycle. (See Fig. 4)
- 3 Install Yoshimura header using stock header bolts.

Note: Do not tighten header bolts at this time.

- 4 Slide Yoshimura tailpipe over the header and install stock chassis mount bolt.

Note: Do not tighten chassis mount bolt at this time.



Fig. 1



Fig. 2

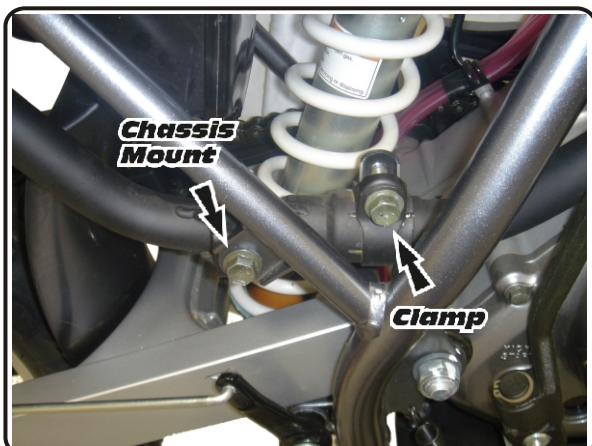


Fig. 3

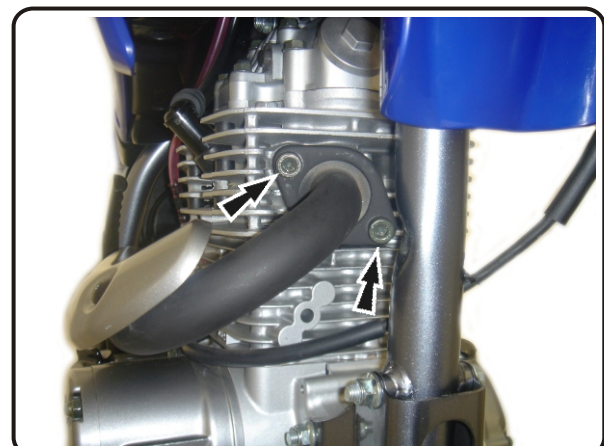


Fig. 4

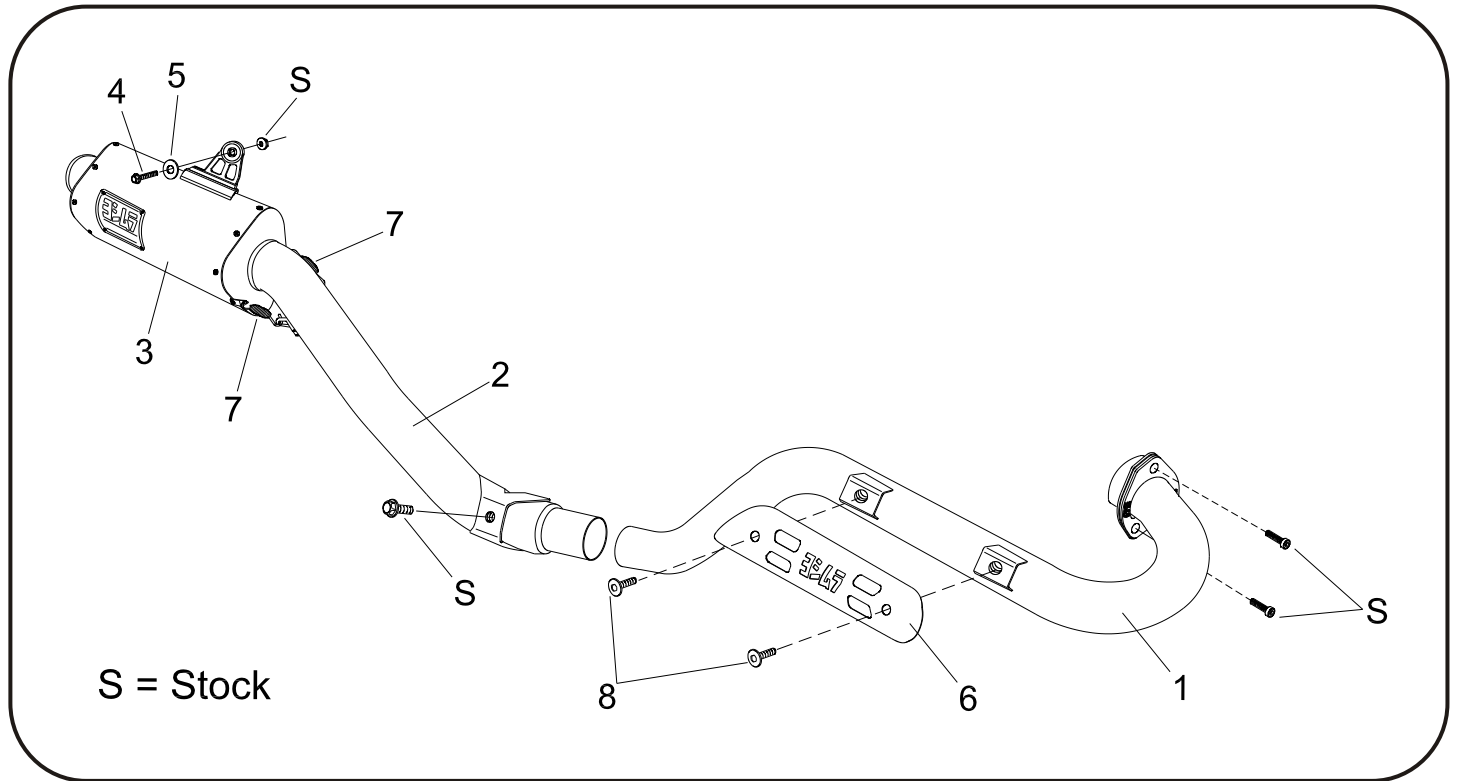
- 7 *Mount muffler to stock muffler mount location using the supplied bolt, supplied washer, supplied spacer, and stock locking nut.*

Note: The supplied 4mm spacer goes between the aluminum Yoshimura muffler bracket and the stock muffler mount location on the motorcycle's frame. This spacer is necessary for proper clearance between the muffler and rear tire.

- 8 *Torque muffler mount bolt to 2.5 kg-m (18 lb-ft).*
- 9 *Torque chassis mount bolt to 2.5 kg-m (18 lb-ft).*
- 10 *Torque header bolts and nut to 1.0 kg-m (7.3 lb-ft).*
- 11 *Remove stock heat shield bolts from stock header.*
- 12 *Install Yoshimura heat shield onto Yoshimura header using the supplied heat shield bolts.*
- 13 *It is recommended that the muffler and tailpipe be wiped down with rubbing alcohol to remove oil and fingerprints. This will help prevent tarnishing of the finish after the exhaust is heated up.*
- 14 *Reinstall right rear number plate.*
- 15 *Before starting motorcycle, check for proper clearance between new exhaust system and rear suspension (i.e. tire, swing-arm, brake, etc). If any problem is found, please carefully follow through the installation steps again. If problem still persists, please call Yoshimura tech. dept. at (800)634-9166 / in CA (909)628-4722.*

NOTE: *After starting motorcycle, it is normal for new exhaust system and muffler to emit smoke until oil residue burns off.*

#2440500-SA

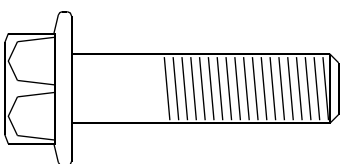


S = Stock

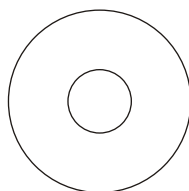
Parts Diagram

NO.	DESCRIPTION	QTY	PART #
1	Yoshimura Competition Header	1	2440-101
2	Yoshimura Competition Tailpipe	1	2440-144
3	Tri-Oval Muffler Assembly	1	**
4	8mm x 35mm Flange Head Bolt	1	M8X35H
5	Large 8mm Washer	1	8MMWASHERL
6	Yoshimura Heat Shield	1	2205-HS
7	Short Spring w/Insulator	2	RACE-SPX-1
8	Heat Shield Bolts	2	RC116HSB
**	Rubber Grommet	1	011257-00
**	Aluminum Grommet Insert	1	ALS-001
**	Yoshimura Vinyl Sticker	2	17028-BLK

Nuts and Bolts Guide (Actual Size):



8mm x 35mm
Flange Hex Bolt



8mm Large Flat Washer



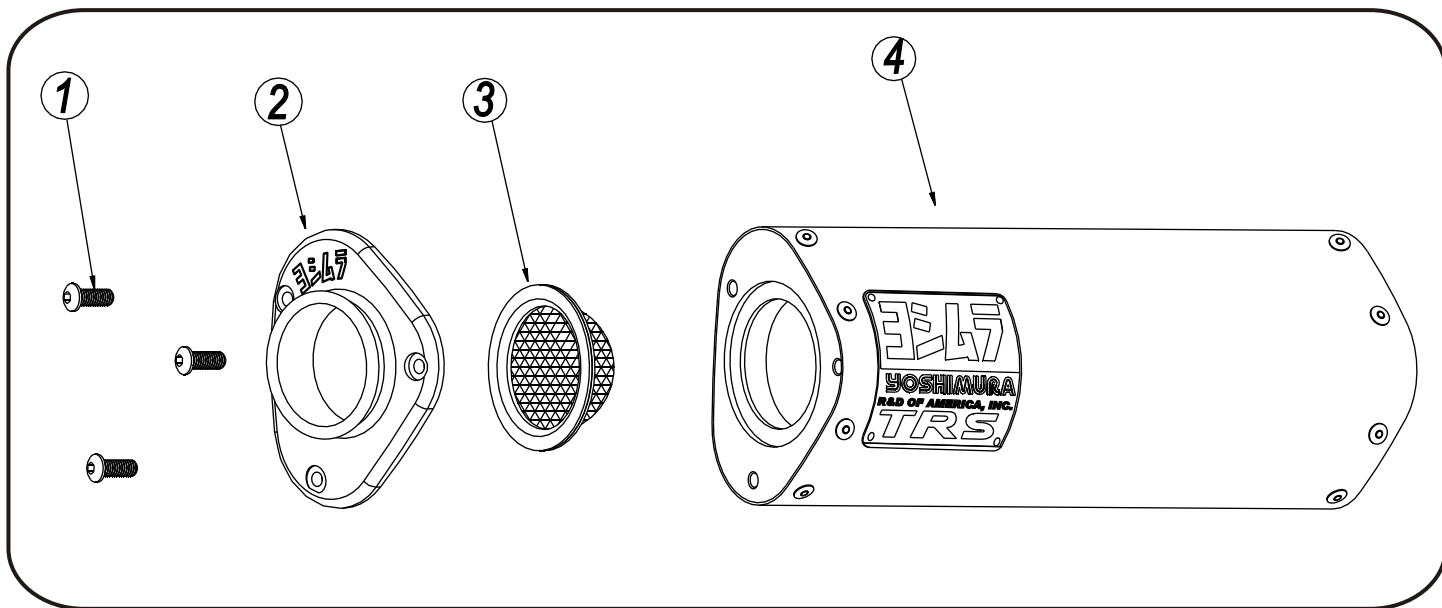
YOSHIMURA

RESEARCH & DEVELOPMENT OF AMERICA, INC.

4555 CARTER COURT, CHINO CALIF. 91710 · (800)634-9166 · (909)628-4722 · FACSIMILE (909)591-2198

www.yoshimura-rd.com

TEC-SA Spark Arrester Cleaning Information



Parts Diagram

Caution: Muffler can be extremely hot. Let muffler cool down before removing spark arrester.

Note: Read through all instructions before beginning disassembly.

NO.	DESCRIPTION	QTY
1	6 x 1.0mm x 16mm Button Head Screw	3
2	Mini YRD TEC End Cap, Cover	1
3	TEC Spark Arrester Insert	1
4	Muffler Assembly	1

Tools Needed:

4mm Allen Key
Wire Brush
Pair of Gloves
Safety Glasses

Cleaning Steps:

1 Using a 4mm Allen key remove the three 6mm x 16mm Button Head Screws located in the muffler end cap. (See Parts Diagram for location)

2 Remove the end cap, gasket and spark arrester from the muffler.

3 Using a wire brush remove carbon deposits from spark arrester screen. Once clean inspect the screen for excessive wear or damage, if any is found the spark arrester must be replaced. Cleaning and inspection should be performed after every 60 hours of use.

(Caution: Gloves and Safety Glasses should be worn while cleaning spark arrester.)

4 Re-install spark arrester, gasket, end cap and 6mm x 16mm screws into muffler assembly. Torque screws to 1.0 kg-m (7.3 lb-ft)

(Note: It is recommended that a low strength "Loctite" is used on the screws.)