



YOSHIMURA

RESEARCH&DEVELOPMENT OF AMERICA, INC.

5420 DANIELS STREET STE A, CHINO CA 91710 · (800)634-9166 · (909)628-4722 · FACSIMILE (909)591-2198

WWW.YOSHIMURA-RD.COM

RS-2 PERFORMANCE EXHAUST SYSTEM

Kawasaki
2003-2012
KLR 650

2435703

RS2 Stainless Steel Slip-on with Stainless Steel Sleeve

NOTE: THIS SYSTEM IS DESIGNED FOR USE IN CLOSED COURSE COMPETITION AND IS NOT INTENDED FOR ANY OTHER USE.



THIS PRODUCT IS DESIGNED FOR USE IN CLOSED COURSE RACING AND IS NOT INTENDED FOR ANY OTHER USE.



CAUTION: The muffler packing on this system MUST be replaced every 6-10 hours of use, or every 1-2 motos. Failure to follow recommended muffler re-packing interval can cause muffler damage and may void the warranty.



Exhaust system and/or components should be installed by a qualified mechanic. If there is any questions contact Yoshimura technical support before attempting installation (800)634-9166 / in CA. (909)628-4722. Yoshimura cannot be held responsible for damage/s incurred from improper installation.

NOTE: IN THE STATE OF CALIFORNIA, IT IS ILLEGAL TO MODIFY THE EMISSION CONTROL SYSTEM, WHICH INCLUDES THE CARBURETORS OF ANY VEHICLE.

Caution: Exhaust system can be extremely hot. Let motorcycle cool down before beginning installation. Always wear hand and eye protection and take precautionary measures to avoid injury.

Note: Read through all instructions before beginning installation.

Tools Needed:

Metric Socket Set
Metric Wrench Set
Torque Wrench
Torque Wrench

Installation Steps:

1. Remove muffler cover panel
 - Remove (2) bolts holding cover panel to subframe (Fig 1)
 2. Remove rear brake reservoir cover and reservoir
 - Remove (2) Phillips head bolts holding cover to frame (A in Fig 2).
 - Remove (1) bolt holding reservoir to frame.
 3. Remove muffler
 - Loosen muffler tailpipe clamp, behind rear brake reservoir.
 - Remove (2) bolts and (1) nut holding muffler and tailpipe assembly to subframe (B in Fig 2).
 - Loosen exhaust clamp and slide forward onto header.
 - Remove muffler mounting bolt and remove muffler. (Fig. 2)
 - Remove exhaust clamp from header.
 4. Install Yoshimura Muffler
 - Slide supplied tailpipe clamp onto Yoshimura tailpipe.
 - Slide muffler assembly with tailpipe onto OEM header.
- NOTE:** No gasket is used between OEM header and Yoshimura tailpipe.
- Install washer, spacer, and grommet components for muffler mounting brackets as shown in Parts Diagram.
 - Tighten tailpipe clamp to 7.0 lb-ft (10 Nm).
 - Tighten muffler mount bolts to 16.5 lb-ft (23 Nm).



Fig. 1

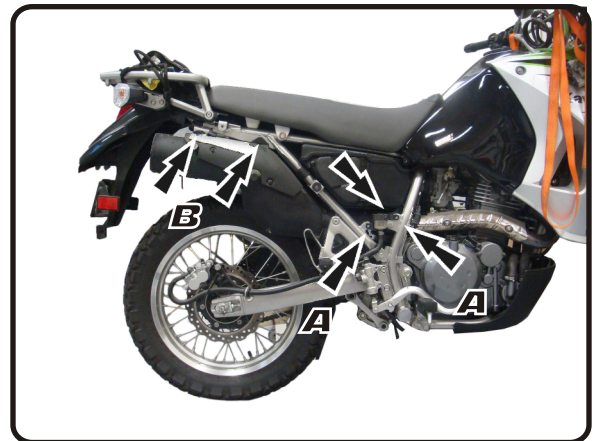


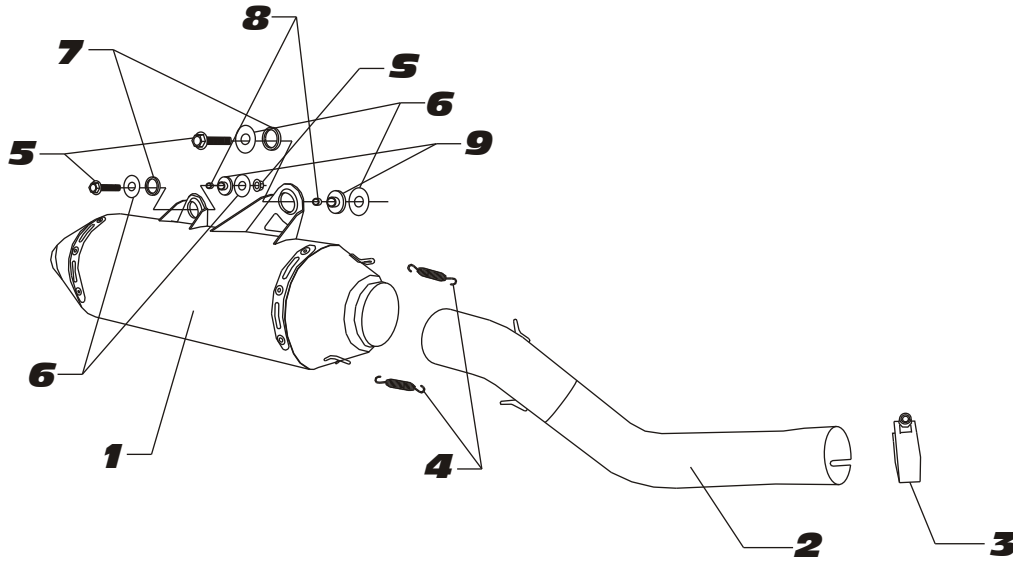
Fig. 2

5. *Reinstall muffler cover panel, reservoir, and reservoir cover.*
6. *It is recommended that the muffler and tailpipe be wiped down with rubbing alcohol to remove oil and fingerprints. This will help prevent tarnishing of the finish after the exhaust is heated up.*
7. *Before starting motorcycle, check for proper clearance between new exhaust system and rear suspension (i.e. tire, swingarm, brake, rear shock, etc). If any problem is found, please carefully follow through the installation steps again. If problem still persists, please call Yoshimura tech department at (800) 634-9166 / in CA (909) 628-4722.*

NOTE: *After starting motorcycle, it is normal for new exhaust system and muffler to emit smoke until oil residue burns off.*

#2435703

S-STOCK



Parts Diagram

NO.	DESCRIPTION	QTY	PART #
1	Yoshimura RS2 Muffler Stainless Steel Muffler Assembly	1	2435703-RMA
2	Yoshimura Stainless Tailpipe	1	2435-152
3	Stainless Steel Tailpipe Clamp	1	22059
4	Short Spring w/ Insulator	2	RACE-SPX-1
5	8mm x 35mm Flange Head Hex Bolt	2	M8X35H
6	8mm x 38mm Flat Washer	4	8X38WSH
7	Rubber Grommet, Muffler Mount	2	Z1030
8	Grommet Spacer, 16mm	2	Z1031-SP
9	Rubber Grommet, Muffler Mount	2	Z1031
**	Spring Puller Tool	1	ST-200
**	Yoshimura Offroad Endcap Plug	1	347PLUG
**	Yoshimura Vinyl Sticker	1	17029
**	8mm x 55mm Flange Head Hex Bolt Use for '10-'11 Model in place of M8X35H	2	M8X55H



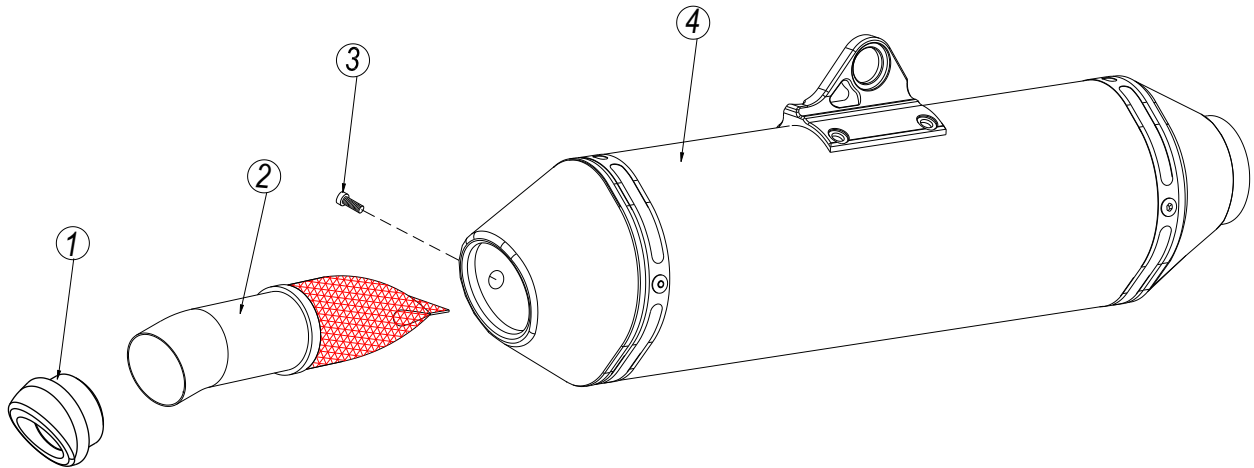
YOSHIMURA

RESEARCH & DEVELOPMENT OF AMERICA, INC.

5420 DANIELS STREET SUITE A, CHINO, CA 91710 · (800)634-9166 · (909)628-4722 · FACSIMILE (909)591-2198

www.yoshimura-rd.com

Spark Arrester Cleaning Information



Parts Diagram

Caution: *Muffler can be extremely hot. Let muffler cool down before removing spark arrester.*

Note: *Read through all instructions before beginning disassembly.*

Tools Needed:

4mm Allen Key
Wire Brush
Pair of Gloves
Safety Glasses

Cleaning Steps:

- 1 Using a 4mm Allen key, remove the bolt that secures the aluminum ring and spark arrester to the muffler (see Parts Diagram for location).
- 2 Remove the spark arrester from the muffler.

NO.	DESCRIPTION	QTY
1	Aluminum Ring	1
2	Spark Arrester	1
3	Spark Arrester Securing Bolt	1
4	Muffler Assembly	1

- 3 Using a wire brush, remove carbon deposits from spark arrester screen. Inspect the screen for excessive wear or damage. If spark arrester is excessively worn or damaged, the spark arrester must be replaced. Cleaning and inspection should be performed after every 60 hours of use.

CAUTION: *Gloves and safety glasses should be worn while cleaning spark arrester.*

- 4 Re-install spark arrester and aluminum ring. Torque the spark arrester securing bolt to 1.0 kg-m (7.3 lb-ft).

NOTE: *It is recommended that a low strength "Loc-tite" is used on the spark arrester securing bolt.*