



YOSHIMURA

RESEARCH & DEVELOPMENT OF AMERICA, INC.

5420 DANIELS STREET STE A, CHINO CA. 91786 · (800)634-9166 · (909)628-4722 · FACSIMILE (909)591-2198

www.yoshimura-rd.com

RS-2 OFF-ROAD PERFORMANCE EXHAUST SYSTEM

HONDA

04-12 CRF250X

2280513

STAINLESS STEEL COMPETITION SYSTEM WITH ALUMINUM SLEEVE

04-05 CRF250R



THIS PRODUCT IS DESIGNED FOR USE IN CLOSED COURSE RACING AND IS NOT INTENDED FOR ANY OTHER USE.



CAUTION: The muffler packing on this system **MUST** be replaced every 6-8 hours of use, or after each moto. Failure to follow recommended muffler re-packing interval can cause muffler damage and may void the warranty.



NOTE: IN THE STATE OF CALIFORNIA, IT IS ILLEGAL TO MODIFY THE EMISSION CONTROL SYSTEM. WHICH INCLUDES THE CARBURETORS OF ANY VEHICLE.

Caution: Exhaust system can be extremely hot. Let motorcycle cool down before beginning installation.

Note: Read through all instructions before beginning installation.

Tools Needed:

Metric Socket Set
Ratchet Wrench and Extension
Torque Wrench

Installation Steps:

- 1 Remove right rear number plate (see Fig. 1 for fastener locations).
- 2 Remove stock exhaust system and exhaust port gasket.
- 3 Install new exhaust port gasket (not supplied).
- 4 Install Yoshimura header using stock nuts (leave loose).
- 5 Install supplied rubber grommet and aluminum insert into muffler mounting bracket (see direction of aluminum insert in Fig. 3).

NOTE: Spray glass cleaner or use soapy water on rubber grommet and aluminum insert to ease installation.

- 6 Install tailpipe with muffler onto header. Make sure the tailpipe is fully seated onto the header.
- 7 Line up tailpipe chassis mounting bolt position (see Fig. 2 for chassis mount location) and install supplied chassis mount bolt and aluminum spacer (leave loose).
- 8 Bolt muffler to stock muffler mounting point using supplied bolt and washer. Hand tighten bolt only at this point.
- 9 Check exhaust for proper position and clearance, adjust exhaust as necessary.
- 10 Torque header nuts to 1.0 kg-m (7.3 lb-ft).
- 11 Torque muffler mount bolt to 2.5 kg-m (18 lb-ft).
- 12 Torque chassis mount bolt to 2.5 kg-m (18 lb-ft).



Fig. 1



Fig. 2

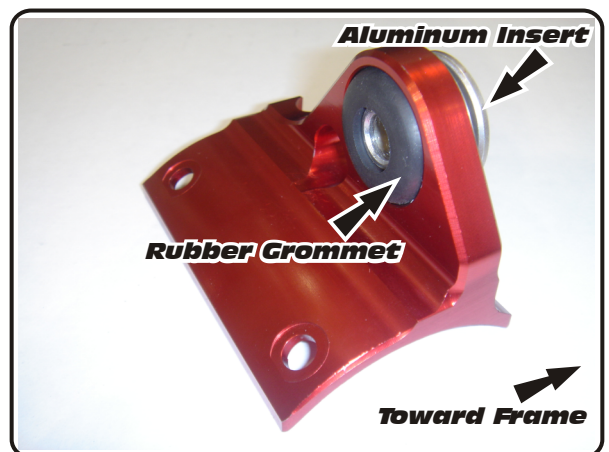
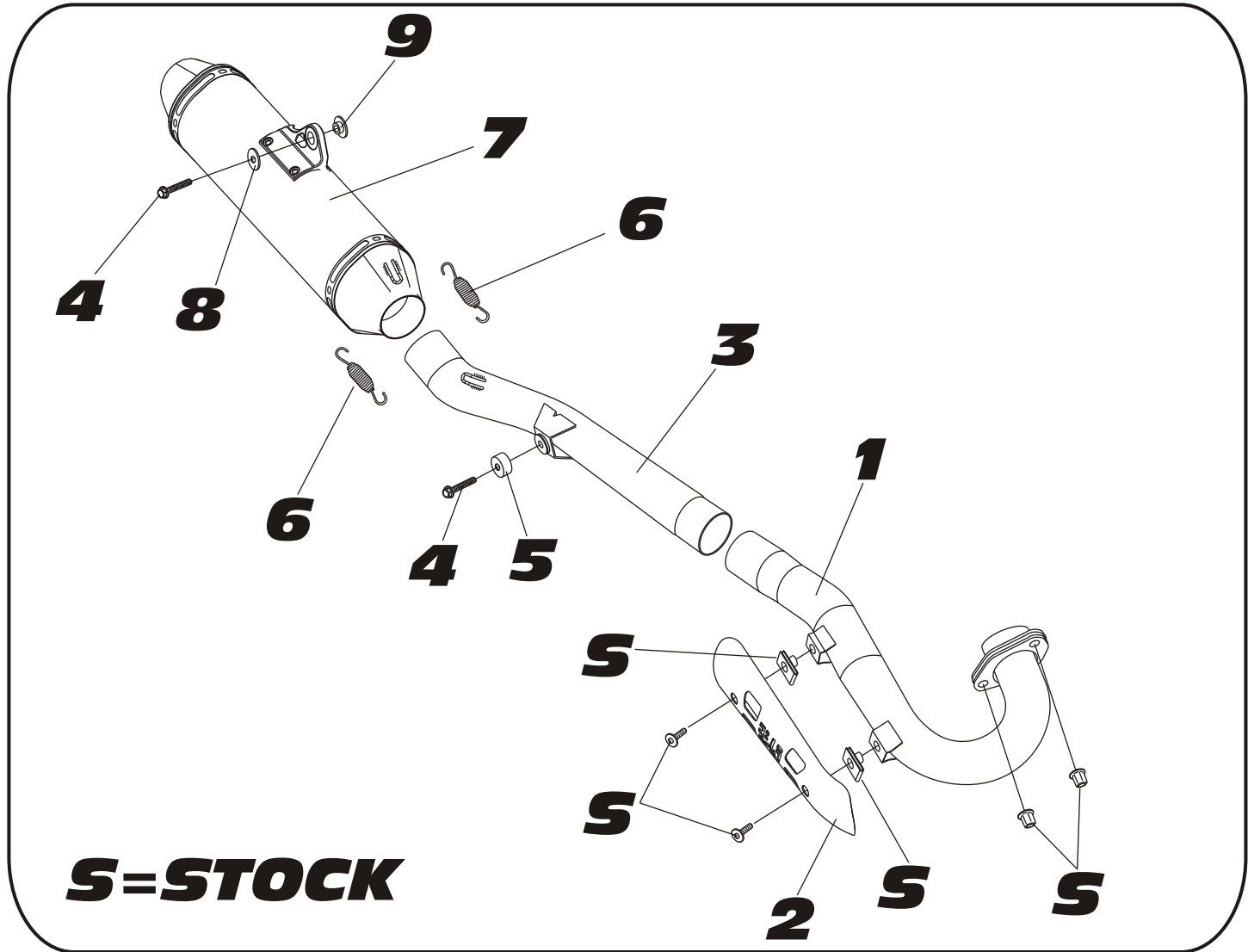


Fig. 3

- 13 *Install Yoshimura heatshield onto Yoshimura header using stock heatshield mounting bolts and stock heatshield mounting nuts.*
- 14 *It is recommended that the muffler and tailpipe be wiped down with rubbing alcohol to remove oil and fingerprints. This will help prevent tarnishing of the finish after the exhaust is heated up.*
- 15 *Before starting motorcycle, check for proper clearance between new exhaust system and rear suspension (i.e. tire, swing-arm, brake, rear shock etc). If any problem is found, please carefully follow through the installation steps again. If problem still persists please call the Yoshimura technical department at (800) 634-9166, in California (909) 628-4722.*
- 16 *Reinstall number plate.*

NOTE: *After starting motorcycle, it is normal for new exhaust system and muffler to emit smoke until oil residue burns off.*

#2280513



S=STOCK

Parts Diagram

NO.	DESCRIPTION	QTY	PART #
1	Yoshimura Header	1	2282-101
2	Yoshimura Heatshield	1	2180-HS
3	Yoshimura Tailpipe	1	2280-144-A
4	8mm x 30mm Bolt	2	M8X30H
5	8mm x 10mm Spacer	1	8X10SPC
6	Medium Exhaust Spring	2	RACE-SPS-1
7	Yoshimura Muffler	1	2280513-RMA
8	Large Washer	1	8MMWASHERL
9	Aluminum Insert for Rubber Grommet	1	ALS-003
**	Muffler Mount Rubber Grommet	1	Z1022
**	Yoshimura Spring Puller	1	ST-200
**	Offroad Endcap Plug	1	347PLUG
**	Yoshimura Vinyl Sticker	1	17029



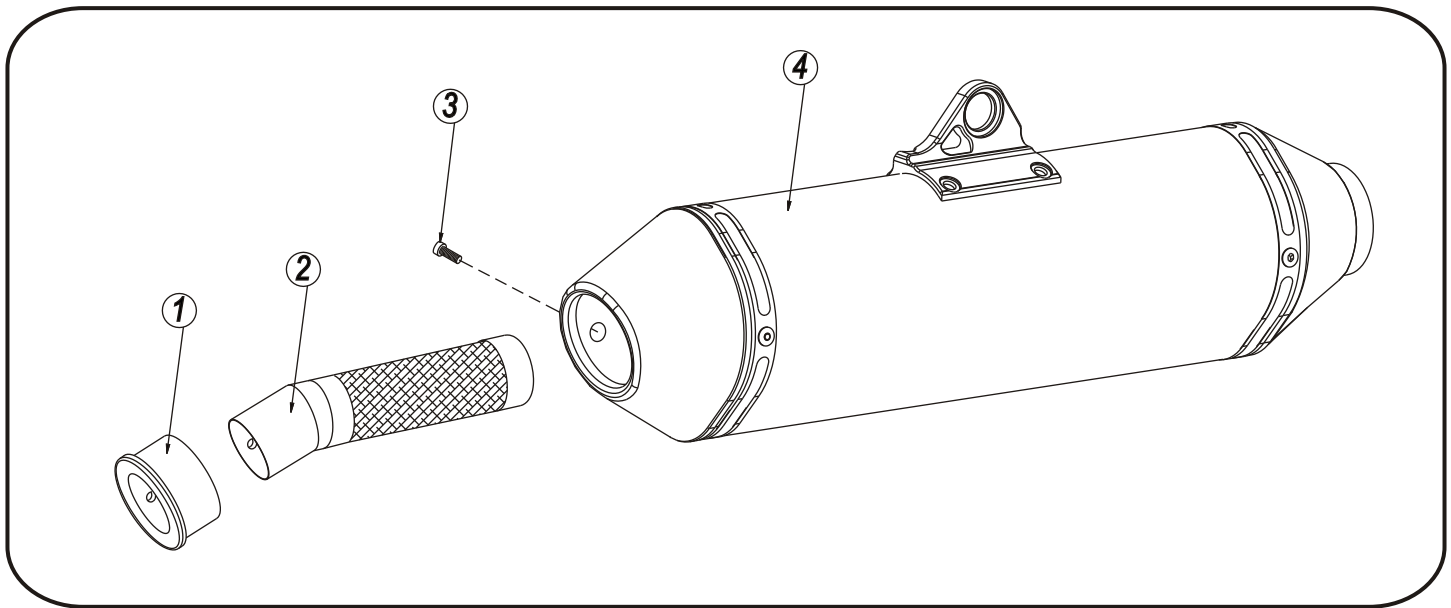
YOSHIMURA

RESEARCH & DEVELOPMENT OF AMERICA, INC.

5420 DANIELS STREET SUITE A, CHINO, CA 91710 · (800)634-9166 · (909)628-4722 · FACSIMILE (909)591-2198

www.yoshimura-rd.com

Spark Arrester Cleaning Information



Parts Diagram

Caution: *Muffler can be extremely hot. Let muffler cool down before removing spark arrester.*

Note: *Read through all instructions before beginning disassembly.*

Tools Needed:

- 3mm Allen Key
- Wire Brush
- Pair of Gloves
- Safety Glasses

Cleaning Steps:

- Using a 3mm Allen key, remove the bolt that secures the aluminum ring and spark arrester to the muffler (see Parts Diagram for location).
- Remove the spark arrester from the muffler.

NO.	DESCRIPTION	QTY
1	Aluminum Ring	1
2	Spark Arrester	1
3	Spark Arrester Securing Bolt	1
4	Muffler Assembly	1

- Using a wire brush, remove carbon deposits from spark arrester screen. Inspect the screen for excessive wear or damage. If spark arrester is excessively worn or damaged, the spark arrester must be replaced. Cleaning and inspection should be performed after every 60 hours of use.

CAUTION: *Gloves and safety glasses should be worn while cleaning spark arrester.*

- Re-install spark arrester and aluminum ring. Torque the spark arrester securing bolt to 1.0 kg-m (7.3 lb-ft).

NOTE: *It is recommended that a low strength "Loc-tite" is used on the spark arrester securing bolt.*