



# YOSHIMURA

RESEARCH & DEVELOPMENT OF AMERICA, INC.

5420 DANIELS STREET STE A, CHINO CA. 91786 · (800)634-9166 · (909)628-4722 · FACSIMILE (909)591-2198

[www.yoshimura-rd.com](http://www.yoshimura-rd.com)

## **TRS "MINI" PERFORMANCE EXHAUST SYSTEM**

**HONDA  
2001-2005  
XR 70**

**2210500-SA**

STAINLESS STEEL COMPETITION SYSTEM



**THIS PRODUCT IS DESIGNED FOR USE IN CLOSED COURSE RACING AND IS NOT INTENDED FOR ANY OTHER USE.**



**CAUTION:** The muffler packing on this system **MUST** be replaced every 6-8 hours of use, or after each moto. Failure to follow recommended muffler re-packing interval can cause muffler damage and may void the warranty.



NOTE: IN THE STATE OF CALIFORNIA, IT IS ILLEGAL TO MODIFY THE EMISSION CONTROL SYSTEM. WHICH INCLUDES THE CARBURETORS OF ANY VEHICLE.

**Caution:** Exhaust system can be extremely hot. Let motorcycle cool down before beginning installation.

**Note:** Read through all instructions before beginning installation.

**Tools Needed:**

8mm,10mm,11mm (7/16") and 12mm sockets  
Ratchet and extension  
Torque wrench

**Installation Steps:**

- 1 Remove right rear cowling (See Fig.1)
- 2 Remove stock exhaust system and exhaust port gaskets.
- 3 Install new exhaust port gaskets.  
(Honda part no. 18291-KZ1-670)
4. Install rubber grommet and aluminum insert into Yoshimura muffler. Bolt muffler to stock position with supplied bolt and washer. Do not tighten at this time.
- 5 Install Yoshimura header/tailpipe with muffler assembly. Install stock header nuts loosely, then install supplied springs, bolt and washer to stock muffler mount position.
- 6 Torque header nuts to 2.0 kg-m (14.6 lb-ft).
- 7 Torque muffler bolt to 2.5 kg-m (18 lb-ft).
- 8 Install Yoshimura heat shield to header with supplied bolts.
- 10 It is recommended that the muffler and tailpipe be wiped down with rubbing alcohol to remove oil and fingerprints. This will help prevent tarnishing of the finish after the exhaust is heated up.
- 11 Check for proper clearance between new exhaust system and rear suspension (i.e. tire, swing-arm, brake, etc). If any problem is found, please carefully follow through the installation steps again. If problem still persists, please call Yoshimura tech. Dept. at (800)634-9166 / in CA (909) 628-4722
- 12 Reinstall cowlings.
- 13 Check for proper clearance between new exhaust system and number plate.

**NOTE:** After starting motorcycle, it is normal for new exhaust system and muffler to emit smoke until oil residue burns off.



Fig. 1



Fig. 2

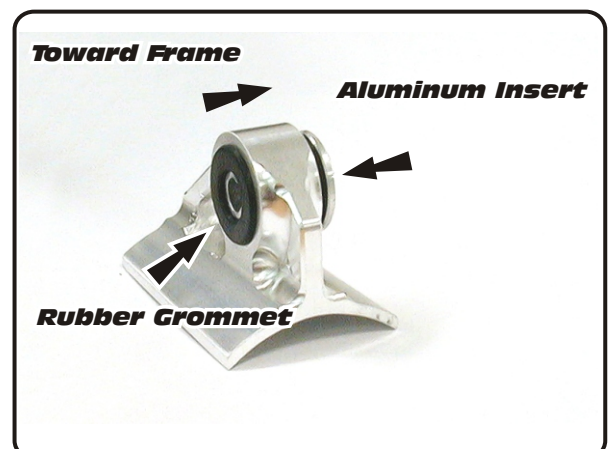
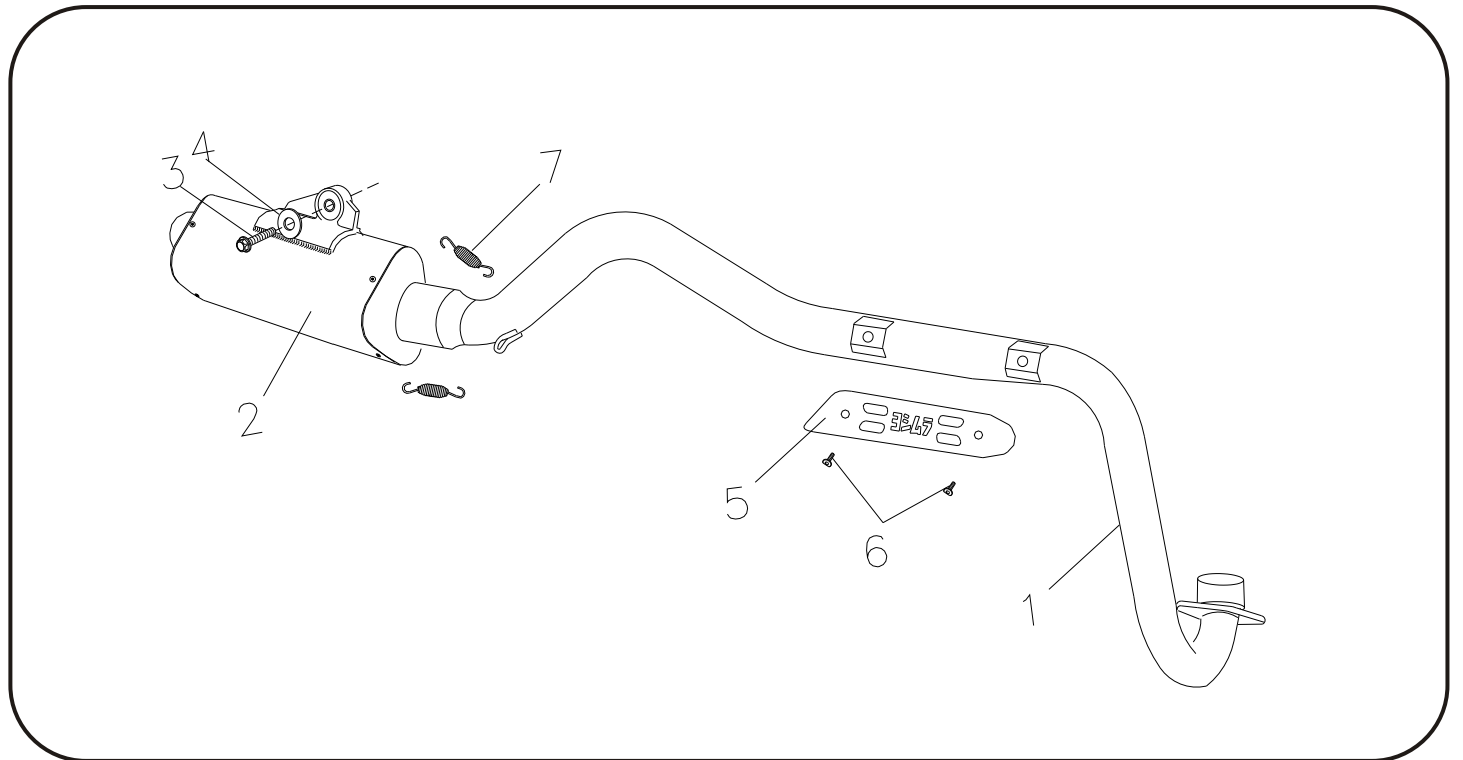


Fig. 3

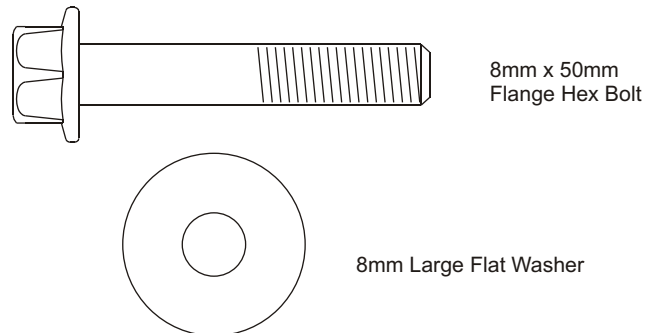
**#2210500-SA**



Parts Diagram

NO.	DESCRIPTION	QTY	PART #
1	Yoshimura Header & Tailpipe Stainless Steel Competition	1	2210-101
2	YRD Muffler Assembly	1	**
3	8mm X50mm Flange Bolt	1	M8X50H
4	8mm Large Washer	1	8MMWASHERL
5	Yoshimura Heat Shield	1	2205-HS
6	Heat Shield Bolts	2	RC116HSB
7	Springs	2	RACE-SPX-1
**	Rubber Grommet	1	011257-00
**	Aluminum Grommet Insert	1	ALS-006
**	Yoshimura Spring Puller	1	ST-200
**	Yoshimura Vinyl Sticker	2	17028-BLK

**Nut and Bolt Guide (Actual Size):**



8mm x 50mm  
Flange Hex Bolt

8mm Large Flat Washer



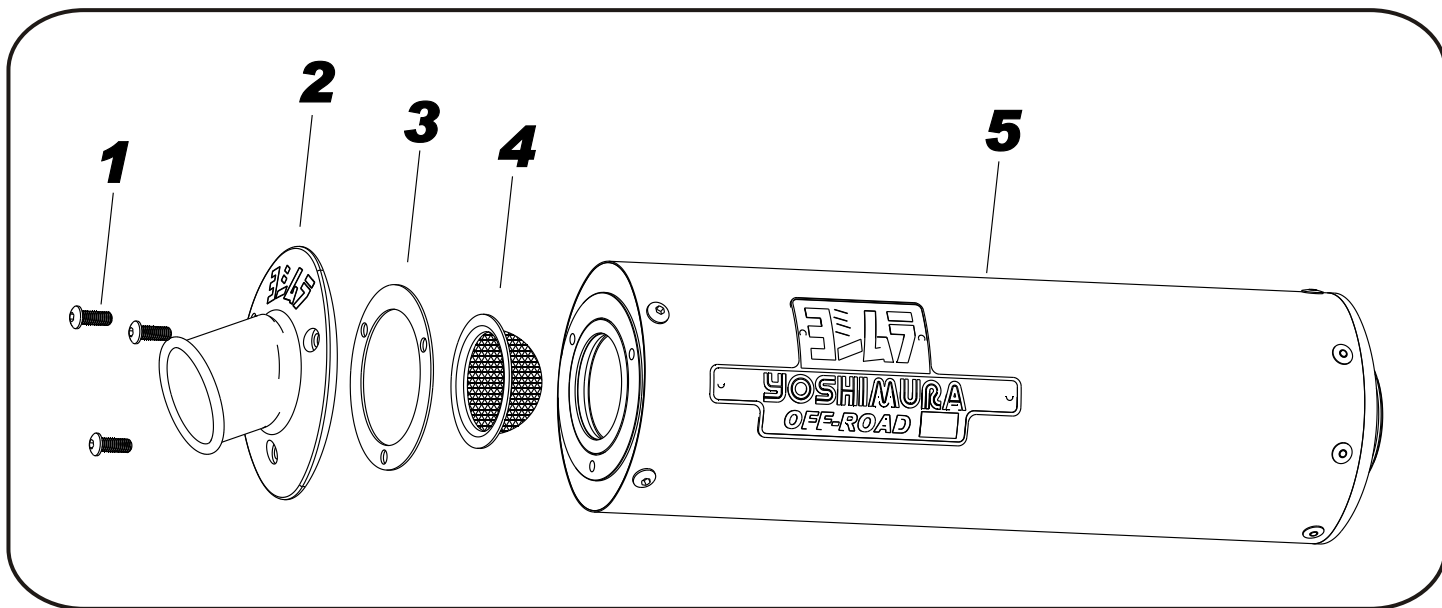
# YOSHIMURA

RESEARCH&DEVELOPMENT OF AMERICA, INC.

4555 CARTER COURT, CHINO CALIF. 91710 · (800)634-9166 · (909)628-4722 · FACSIMILE (909)591-2198

[www.yoshimura-rd.com](http://www.yoshimura-rd.com)

## TEC-SA Spark Arrester Cleaning Information



Parts Diagram

**Caution:** *Muffler can be extremely hot. Let muffler cool down before removing spark arrester.*

**Note:** *Read through all instructions before beginning disassembly.*

NO.	DESCRIPTION	QTY
1	6 x 1.0mm x 16mm Button Head Screw	3
2	4.0" YRD End Cap, Cover	1
3	T.E.C. End Cap, Gasket	1
4	T.E.C. End Cap, Spark Arrester	1
5	Muffler Assembly	1

### Tools Needed:

4mm Allen Key  
Wire Brush  
Pair of Gloves  
Safety Glasses

### Cleaning Steps:

1 Using a 4mm Allen key remove the three 6mm x 16mm Button Head Screws located in the muffler end cap. (See Parts Diagram for location)

2 Remove the end cap, gasket and spark arrester from the muffler.

3 Using a wire brush remove carbon deposits from spark arrester screen. Once clean inspect the screen for excessive wear or damage, if any is found the spark arrester must be replaced. Cleaning and inspection should be performed after every 60 hours of use.

(Caution: Gloves and Safety Glasses should be worn while cleaning spark arrester.)

4 Re-install spark arrester, gasket, end cap and 6mm x 16mm screws into muffler assembly. Torque screws to 1.0 kg-m (7.3 lb-ft)

(Note: It is recommended that a low strength "Loctite" is used on the screws.)