



YOSHIMURA

RESEARCH&DEVELOPMENT OF AMERICA, INC.

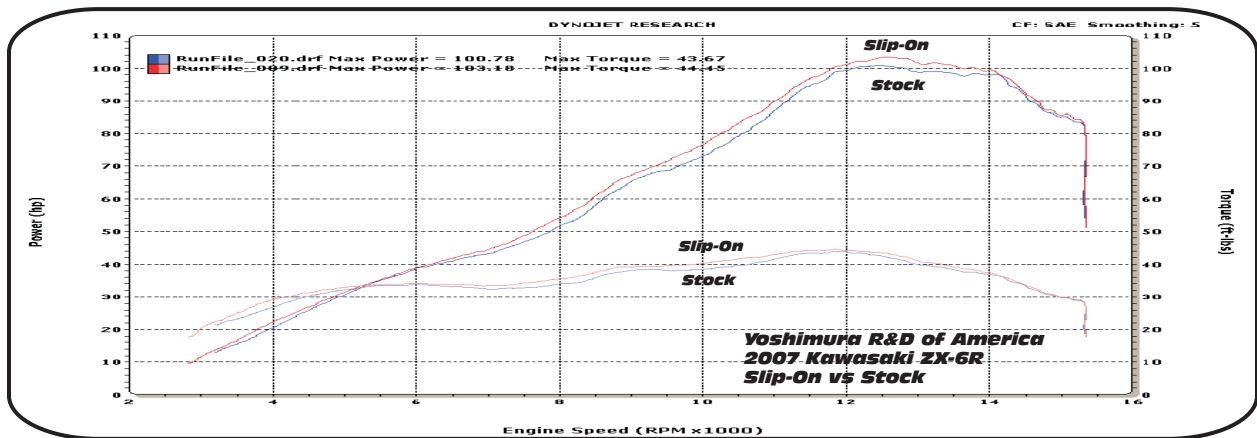
5420 DANIELS STREET STE A, CHINO CA. 91710 · (800)634-9166 · (909)628-4722 · FACSIMILE (909)591-2198

www.yoshimura-rd.com

RS-5 PERFORMANCE EXHAUST SYSTEM

**Kawasaki
2007-2008
ZX6R/RR**

1463272	RACE ONLY SLIP-ON SYSTEM WITH CARBON FIBER SLEEVE
1463275	RACE ONLY SLIP-ON SYSTEM WITH STAINLESS STEEL SLEEVE
1463277	RACE ONLY SLIP-ON SYSTEM WITH TITANIUM SLEEVE



Note: Dyno graphs are for comparison use only. Actual results may vary depending on operating and motorcycle condition.



THIS PRODUCT IS DESIGNED FOR USE IN CLOSED COURSE RACING AND IS NOT INTENDED FOR HIGHWAY USE.



NOTE: IN THE STATE OF CALIFORNIA, IT IS ILLEGAL TO MODIFY THE EMISSION CONTROL SYSTEM, WHICH INCLUDES THE FUEL INJECTION OF ANY VEHICLE.

Caution: Exhaust system can be extremely hot. Let motorcycle cool down before beginning installation.

Note: Read through all instructions before beginning installation.

Tools Needed:

8mm, 10mm, and 12mm Sockets

Ratchet

12mm Wrench

4mm and 5mm Allen Wrench

Torque Wrench

Scissors & Pen

Installation Steps:

- 1 Remove right and left black plastic tank side panels by removing the bolts on each side, then remove the rider seat and plastic heat shield with bolts. Remove passenger seat.
- 2 Carefully remove Rear Cowling by removing the 4 bolts as indicated in Figure 1.

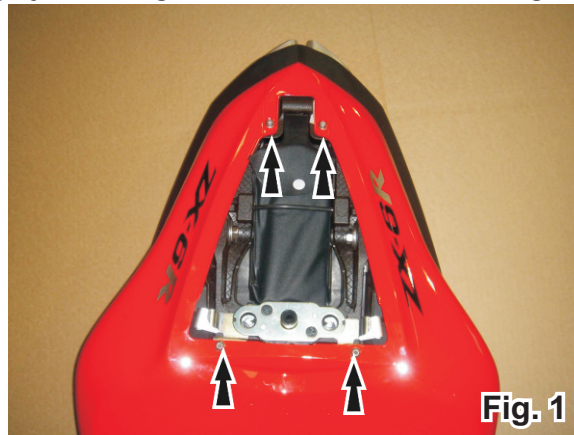


Fig. 1

- 3 Remove the black plastic trim piece at the tip of the tail section by removing the 4 bolts shown in Figure 2. Unplug electrical connections to taillight, turn signals, and license plate light.

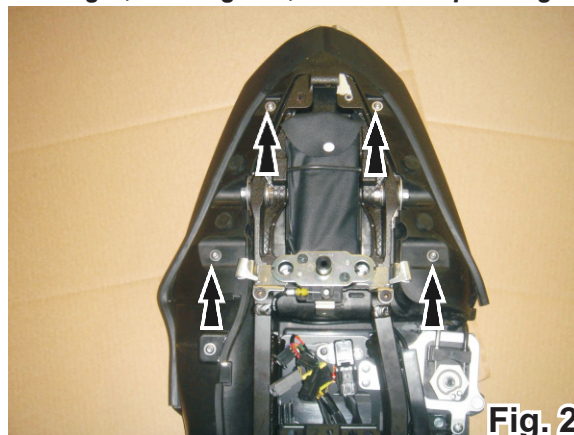


Fig. 2

- 4 Remove rear turn signals by removing the 3 bolts on each side as shown in Figure 3. Remove Fender Cover by removing the 2 two plastic clips as shown in Figure 4. Remove rear fender and taillight assembly by removing the 2 bolts on each side as shown in Figure 5.

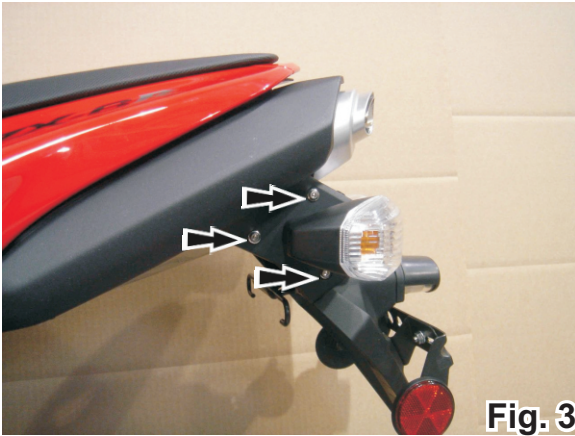


Fig. 3

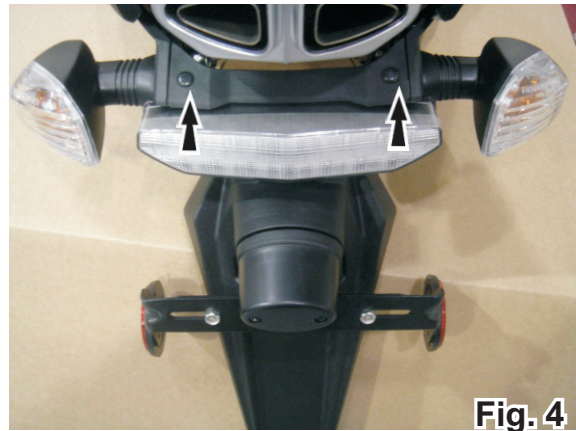


Fig. 4

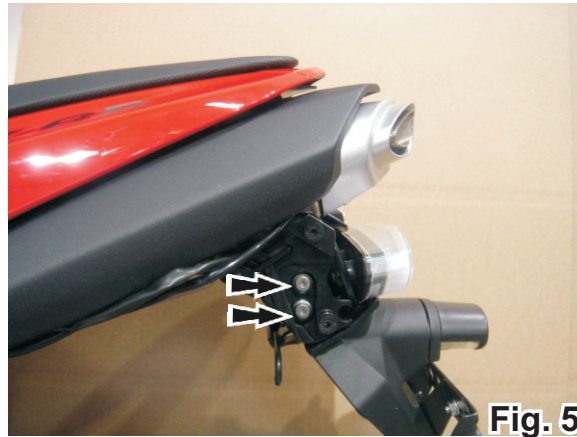


Fig. 5

- 5 Remove Exhaust Valve Cover shown in Figure 6.

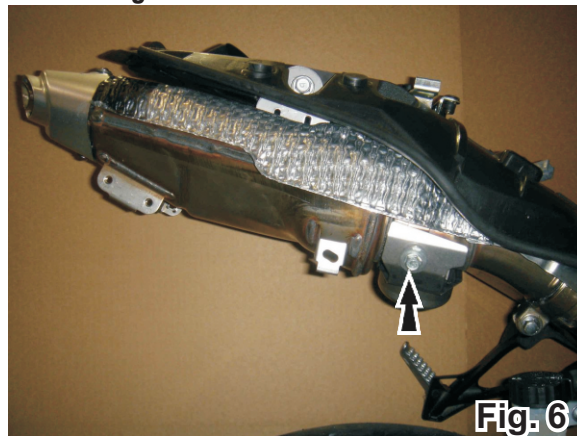
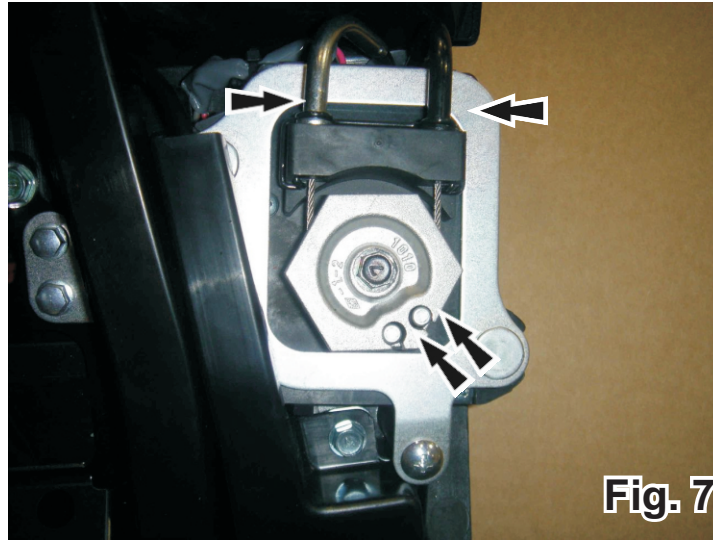


Fig. 6

- 6 Completely remove exhaust valve cables by removing metal clip and removing cables from servo motor (Fig. 7).

NOTE: Do **NOT** unplug or remove electronic servo motor. The servo motor must remain connected and operational. **ONLY** remove the exhaust valve cables.



- 7 **Remove stock muffer:** Loosen midpipe to tailpipe collector clamp. Remove the two muffer mounting bolts shown while supporting the weight of the muffer (Caution: The muffer is heavy). Remove muffer. Do not remove stock midpipe to tailpipe collector clamp or stock exhaust gasket as they will be used during reinstallation. If stock exhaust gasket is damaged, replace with a new stock exhaust gasket. (Fig. 8 and Fig. 9).

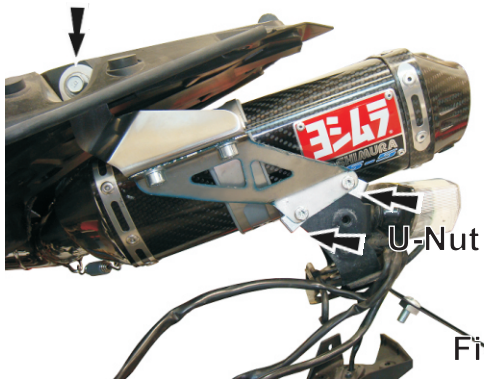


- 8 **Trace the supplied Heatshield Template onto the Aluminum Heatshield by taping or firmly holding the template to the adhesive side of the heatshield. Note orientation and adhesive side. Trim the heatshield using scissors or a sharp cutting blade. Keep excess pieces as it will be used later. Use rubbing alcohol to clean area where heatshield will be applied.**
- 9 **Remove adhesive backing and apply to underside of rear fender assembly (Fig. 10).**

NOTE: Take a moment to examine how the heatshield lines up with the features of the undertail plastic before you begin.

**Fig. 10**

- 10 After the heatshield is installed use the remaining pieces to patch or cover any open areas.
- 11 Slide Yoshimura tailpipe into stock midpipe using stock collector clamp and stock exhaust gasket.
- 12 Install Yoshimura exhaust hangers to stock muffler mounting location. Do not tighten bolts.
- 13 Attach 4 U-nuts to stock mounting position on fender. Attach rear fender, brake light, and left and right turn signals to Yoshimura rear fender brackets (Fig. 11).

**Fig. 11****Fig. 12**

- 14 Install supplied rubber muffer clamp heatshield to inside of muffer clamp. Slide muffer clamp onto muffer and mount muffer and stock rear fender using the supplied exhaust hangers and fender bracket. Fitting of rubber clamp heatshield may be eased by using a lubricant.
- 15 Check alignment of exhaust, then torque collector clamp to 1.25 kg-m (9 lb-ft). Exhaust orientation should be as shown in Figure 13.

**Fig. 13**

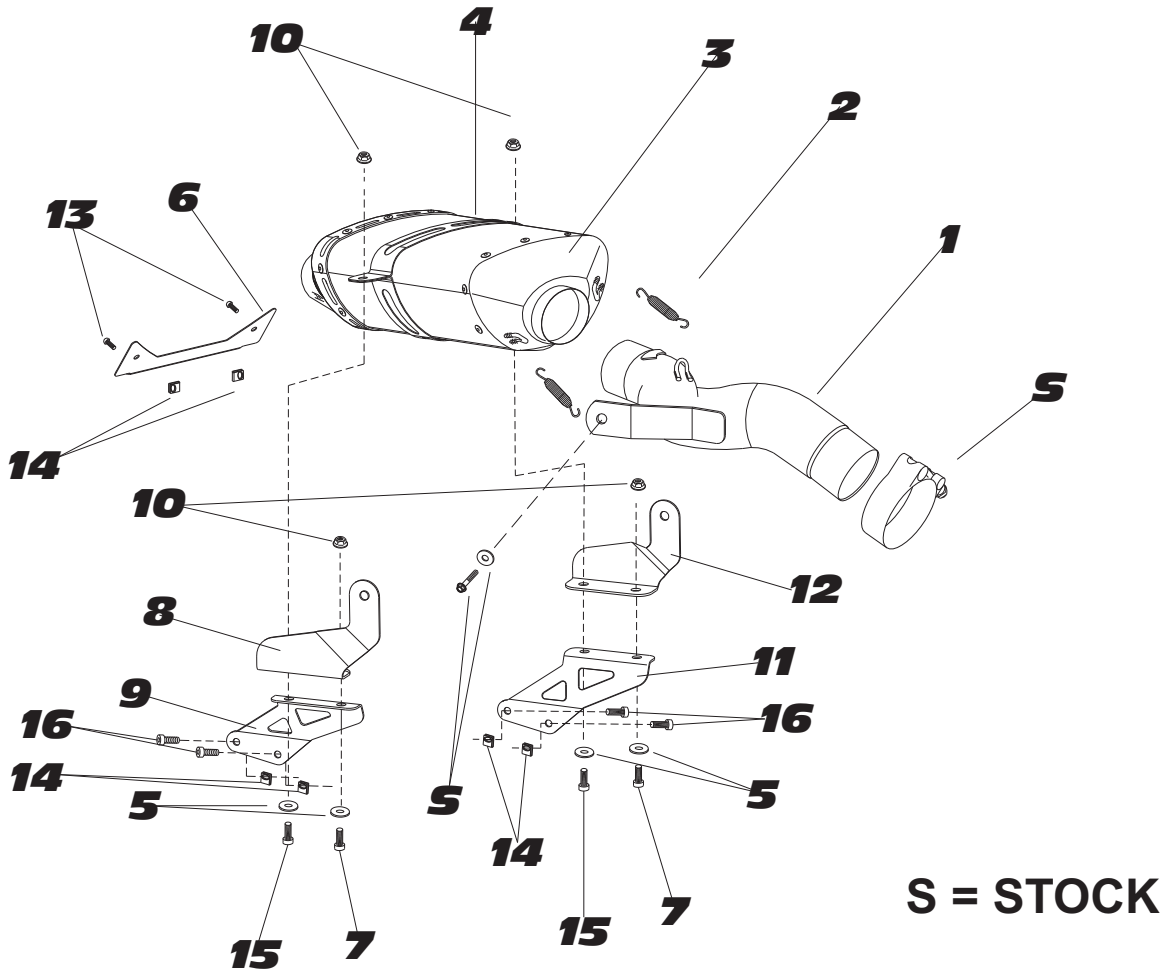
- 16 Torque muffler clamp bolts and nuts to 2.5 kg-m (18 lb-ft).
- 17 Using supplied button head bolts, attach the supplied Aluminum Heatshield 1463-LT as shown in Figure 14.

**Fig. 14**

- 18 Reinstall midpipe heat shield, rear cowling, and seats in reverse order of disassembly. Check for proper operation of tail light, brake light, and turn signals before operation of motorcycle.
- 19 It is recommended that the muffler and tailpipe be wiped down with rubbing alcohol to remove oil and fingerprints. This will help prevent tarnishing of the finish after the exhaust is heated up.
- 20 Check for proper clearance between new exhaust system and motorcycle (i.e. subframe, bodywork, etc.). If any problem is found, please carefully follow through the installation steps again. If problem still persists, please call Yoshimura technical department at (800)634-9166 or (909)628-4722 in California.

Note: After starting motorcycle, it is normal for new exhaust system and muffler to smoke until oil residue burns off.

146327(2,5,7)



S = STOCK

Parts Diagram

NO.	DESCRIPTION	QTY	PART #
1	Yoshimura Stainless Steel tailpipe	1	1463-435
2	Medium Exhaust Spring	2	RACE-SPS-1
3	RS-5 Muffler Assembly	1	**
4	Stainless Steel Muffler Clamp Stainless Steel or Titanium Sleeve use Carbon Fiber Sleeve use	1	1463-MPCX 1463-MPC
5	8mm Washer	4	8MMWASHER
6	Aluminum Heatshield	1	1463-LT
7	8mm x 20mm Socket Head Bolt	2	M8X20
8	Exhaust Hanger (Right)	1	1463-HNG-R
9	Fender Bracket (Right)	1	1463-FNBKT-R
10	8mm Nut	4	8MMNUT
11	Fender Bracket (Left)	1	1463-FNBKT-L
12	Exhaust Hanger (Left)	1	1463-HNG-L
13	6x12mm Button Head Screw	2	M6X12BHS
14	6mm U-Nut	6	M6x1U
15	8mm x 25mm Socket Head Bolt	2	M8X25
16	6mm x 16mm Bolt	4	M6X16L
**	Muffler Clamp Heat Insulator	1	HT SHLD5
**	Adhesive Foil Heat Shield (8" x 16")	1	1225-00-01
**	Adhesive Foil Heat Shield Template	1	**
**	Low Volume Insert	1	INS-09-K
**	Yoshimura Spring Puller Tool	1	ST-200
**	Yoshimura Vinyl Sticker	1	17029