



YOSHIMURA

RESEARCH&DEVELOPMENT OF AMERICA, INC.

5420 DANIELS STREET STE A, CHINO CA., 91710 · (800)634-9166 · (909)628-4722 · FACSIMILE (909)591-2198

www.yoshimura-rd.com

YOSHIMURA PERFORMANCE EXHAUST SYSTEM

**2008-2011
HONDA
CBR1000RR
w/o ABS
W/ ABS**

12030021	R-77 FULL SYSTEM WITH CARBON FIBER SLEEVE
12030051	R-77 FULL SYSTEM WITH STAINLESS STEEL SLEEVE
12030061	R-77 FULL SYSTEM WITH SS SLEEVE & SS ENDCAP
12030071	R-77 FULL SYSTEM WITH TITANIUM SLEEVE



THIS PRODUCT IS DESIGNED FOR USE IN CLOSED COURSE RACING AND IS NOT INTENDED FOR HIGHWAY USE.



NOTE: IN THE STATE OF CALIFORNIA, IT IS ILLEGAL TO MODIFY THE EMISSION CONTROL SYSTEM FOR HIGHWAY OR OFF-HIGHWAY USE, WHICH INCLUDES THE FUEL INJECTION SYSTEM OR CARBURETOR OF ANY VEHICLE.

Caution: Exhaust system can be extremely hot. Let motorcycle cool down before beginning installation. Always wear hand and eye protection and take precautionary measures to avoid injury. Note: Read through all instructions before beginning installation.

Tools Needed:

Metric Socket Set
Ratchet and Extension Set
Metric Combination Wrench Set
Metric Allen Wrench Set
Torque Wrench

Installation Steps:

1. Remove stock exhaust system.

-Remove left, right and lower fairings. (Fig. 1) (Refer to factory service manual for detailed instructions.)

-Remove small undertail cover to expose exhaust control valve servo. (Fig. 2) Mark servo cam position. Turn servo clockwise to loosen cable tension. Remove cable from cam. Return cam to original position. The cam must be returned to its original position to prevent check engine light. (Note: Cable will be removed with muffler.)

-Loosen muffler clamp bolt.

-Remove muffler mounting bolt.

-Loosen right rearset mounting bolts.

-Remove muffler.

-Remove header. (Note: Removal of lower radiator mounting bracket may ease removal)

-Remove stock exhaust gaskets. (They will not be used with Yoshimura system.)

-Remove lower radiator bracket. (Fig. 3)

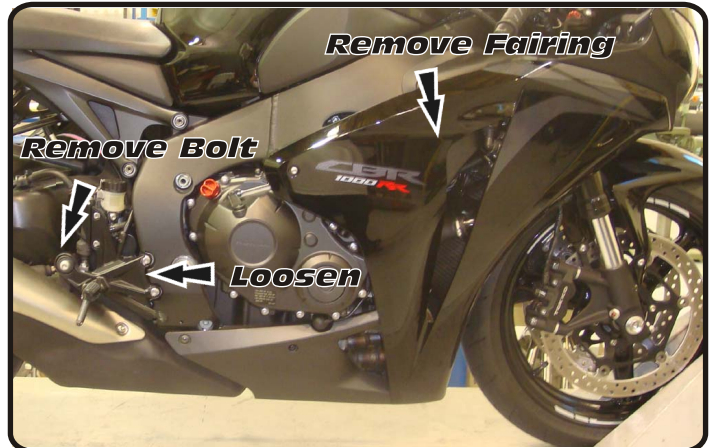


Fig. 1

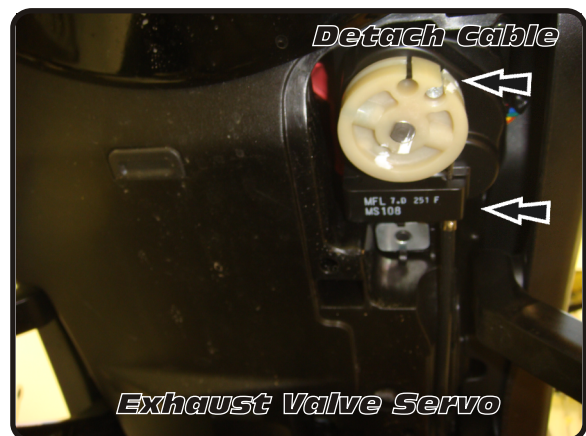


Fig. 2

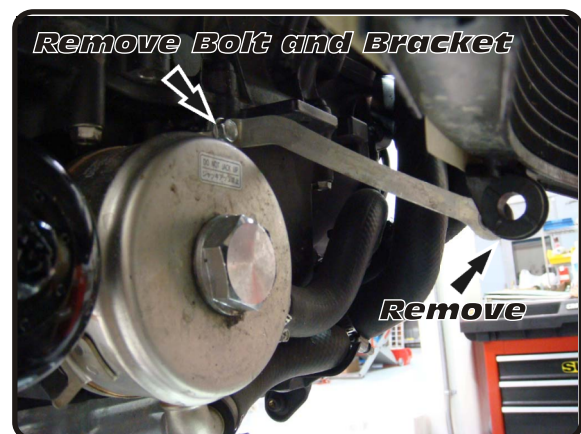


Fig. 3

2. Install Yoshimura header.

-Install Yoshimura manifolds and flanges using stock nuts. Do not torque at this time. (Fig. 4)

Note: Leave manifolds loose to ease fitment of headers.

-Install springs onto flanges, noting spring hook locations of header.

-Install header from one end of the engine to the other. Slip one tube at a time into manifolds.

Install springs using supplied spring puller tool. Note: Make sure that header tubes are seated fully into the exhaust manifolds. You may need to lightly tap the header tubes with a plastic mallet for proper fit.

-Bolt Yoshimura header to stock chassis location using stock bolt, heatshield bracket, washers and rubber grommet.

Note: Insert heatshield bracket tab into slot on Yoshimura tailpipe mount. (See Fig. 7)

3. Install Yoshimura muffler onto tailpipe.

Note: Use a small amount of anti-seize on slip joints.

-Install supplied exhaust springs.

-Bolt muffler to stock location on right rearset (See Fig. 5 for orientation). Do not torque at this time.

4. Torque header bolts to 9.0 lb-ft (12 N-m).

5. Reinstall lower radiator mounting bracket. Torque to factory specifications.

6. Tighten header chassis mount bolt. Torque to 16.0 lb-ft (22 N-m).

7. Tighten rearset bolts. Torque to 29 lb-ft (37 N-m). (Fig. 6)

8. Torque muffler mount bolt to 16.5 lb-ft (23 N-m).

NOTE: It is recommended that the muffler, tailpipe, and header be wiped down with rubbing alcohol to remove oil and fingerprints. This will help prevent tarnishing of the finish after the exhaust is heated up.

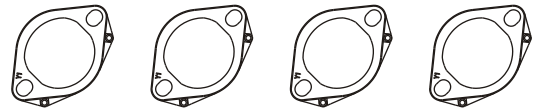
9. If O2 sensor is not to be used, install supplied bolt and crush washer in O2 sensor bung on Yoshimura tailpipe. Torque to 16.5 lb-ft (23 N-m).

10. Reinstall fairings and exhaust valve servo cover.

11. Check for proper clearance between new exhaust system and rear suspension (i.e. tire, swing-arm, brake, rear shock etc). There should be about a 4mm gap between the muffler and swingarm. Adjustment of tailpipe and/or muffler may be necessary to achieve desired fit. If any problem is found, please carefully follow through the installation steps again. If problem still persists, please call Yoshimura technical department at (800) 634-9166 / in CA (909) 628-4722

NOTE: After starting the vehicle, it is normal for a new exhaust system and muffler to emit smoke until oil residue burns off.

Exhaust Flange Orientation



View From Front

Fig. 4

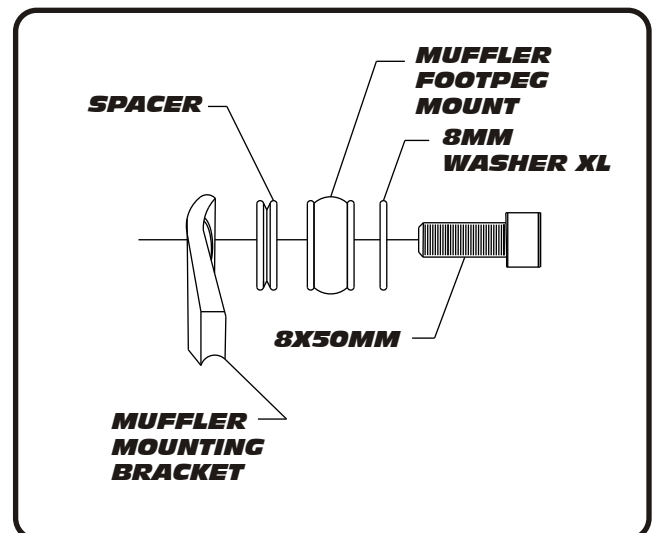


Fig. 5



Fig. 6

Heatshield Installation:

1. Install heatshield bracket to fairing mount using stock bolt.

-See Fig. 8 for location.

-Leave bracket loose to ease alignment of heatshield with heatshield bracket. The bracket should be tightened in a horizontal position, as shown.

2. Install Yoshimura heatshield using supplied heatshield bolts. Torque to 8 lb-ft.

-Note: Use of blue threadlock or "loc-tite" is recommended.

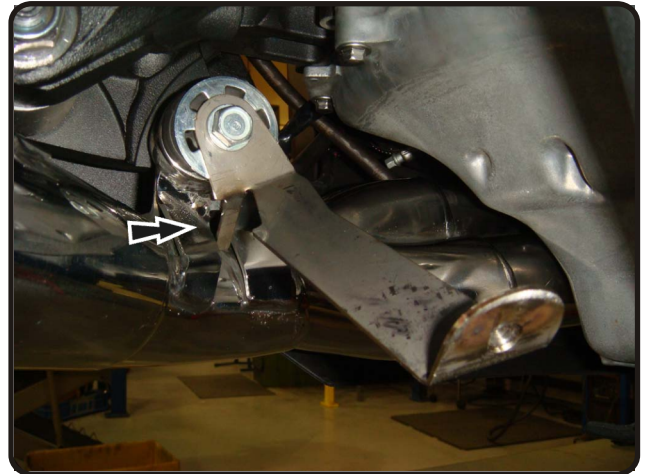


Fig. 7

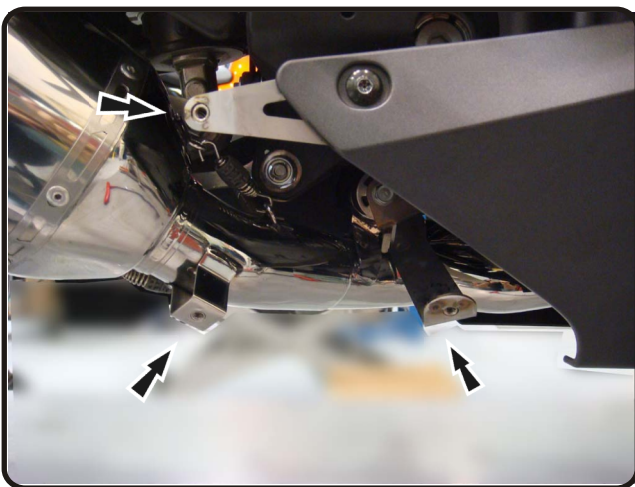


Fig. 8



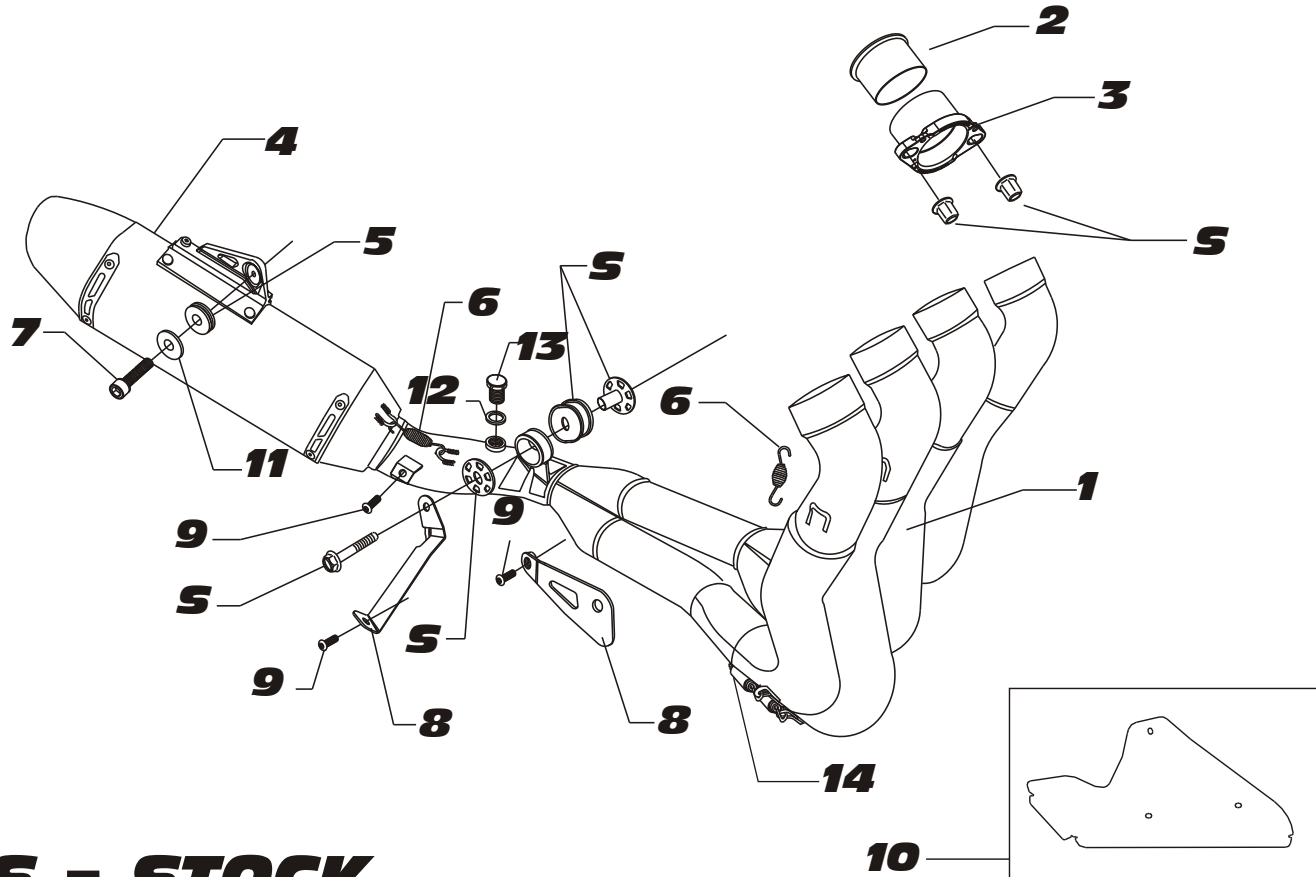
Fig. 9

NOTE: The Yoshimura header includes an adapter for the O2 sensor bung to be used with the M12X1.25 OEM O2 sensor. In the case that an aftermarket O2 sensor is utilized requiring an M18X1.5 thread pitch, remove the adapter shown in Fig. 10 to reveal the M18X1.5 bung.



Fig. 10

#120300(21,51,61,71)



S = STOCK

Parts Diagram

NO.	DESCRIPTION	QTY	PART #
1	Yoshimura Stainless Steel Header	1	1201-404B
2	Yoshimura Manifold	4	1201SMT
3	Yoshimura Flange	4	1201SDY
4	R-77 Muffler Assembly	1	
	Carbon Fiber Sleeve with Carbon Fiber Endcap		1201202-RMA
	Stainless Steel Sleeve with Carbon Fiber Endcap		1201205-RMA
	Stainless Steel Sleeve with Stainless Endcap		1201206-RMA
	Titanium Sleeve with Carbon Fiber Endcap		1201207-RMA
5	8mm X 7mm Aluminum Spacer	1	8X7SPC
6	Small Exhaust Springs	6	RACE-SPX-1
7	8mmX50mm Socket Head Cap Screw	1	M8X50
8	120100X SS Heatshield Bracket Set	1	1201-HSBRKT-00
9	Heatshield Bolts	3	RC116HSB-BK
10	120100X Aluminum Heatshield for R77	1	1201-HS-00
11	8mm Washer X-Large	1	8MMWASHERXL
12	M12 Copper Crush Washer	1	12MMCW
13	12mmX8mm Flanged Hex Head Bolt	1	M12X8H
14	Medium Exhaust Springs	4	RACE-SPS-1
**	Yoshimura Sound Insert Kit		
	SS Endcap		INS-03-K
	CF Endcap	1	INS-04-K
**	Yoshimura Spring Puller Tool	1	ST-200
**	Yoshimura Vinyl Sticker	1	17029