



# YOSHIMURA

RESEARCH&DEVELOPMENT OF AMERICA, INC.

5420 DANIELS STREET STE A, CHINO CA., 91710 · (800)634-9166 · (909)628-4722 · FACSIMILE (909)591-2198

**[www.yoshimura-rd.com](http://www.yoshimura-rd.com)**

## **YOSHIMURA PERFORMANCE EXHAUST SYSTEM**

**2008-2009  
HONDA  
CBR1000RR**

|                |   |
|----------------|---|
| <b>1202202</b> | R-77 SLIP-ON SYSTEM WITH CARBON FIBER SLEEVE    |
| <b>1202205</b> | R-77 SLIP-ON SYSTEM WITH STAINLESS STEEL SLEEVE |
| <b>1202206</b> | R-77 SLIP-ON SYSTEM WITH SS SLEEVE & SS ENDCAP  |
| <b>1202207</b> | R-77 SLIP-ON SYSTEM WITH TITANIUM SLEEVE        |



**THIS PRODUCT IS DESIGNED FOR USE IN CLOSED COURSE  
RACING AND IS NOT INTENDED FOR HIGHWAY USE.**



NOTE: IN THE STATE OF CALIFORNIA, IT IS ILLEGAL TO MODIFY THE EMISSION CONTROL SYSTEM, WHICH INCLUDES THE FUEL INJECTION SYSTEM.

**Caution:** Exhaust system can be extremely hot. Let motorcycle cool down before beginning installation. Always wear hand and eye protection and take precautionary measures to avoid injury.

## Tools Needed:

Metric Socket Set  
3/8" Ratchet and Extension  
Metric Combination Wrench Set  
Metric Allen Wrench Set  
Torque Wrench

## Installation Steps:

1. Remove Stock Muffler
  - Remove rear bolt on lower left cowl.
  - Remove exhaust valve control cover (Located under tail).
  - Detach cable from servo motor. (See Fig. 1)  
Note: Cable will be removed with muffler.
  - Loosen muffler clamp.
  - Remove muffler mounting bolt.
  - Loosen right rearset bolts. (Fig. 2)
  - Remove muffler.
2. Install Heatshield bracket.
  - Remove lower header chassis mount bolt. (Fig. 3)
  - Install Yoshimura heatshield bracket.
  - Note: Insert heatshield bracket tab into slot in stock header mounting bracket. Torque to factory specifications.
3. Insert supplied clamp onto Yoshimura tailpipe and install tailpipe onto stock header.  
Note: Stock gasket is NOT used. It is recommended to use an anti-seize compound on header to tailpipe connection surface.
4. Install Yoshimura muffler onto tailpipe.
5. Torque to right rearset bolts to factory specifications.
6. Torque muffler clamp bolt to 9.5 Lb-ft (13 Nm). Install exhaust springs using supplied spring puller tool.
7. Bolt muffler to stock mounting location using supplied bolt, stock washer and supplied spacer. Torque to 9.5 Lb-ft (13 Nm). (See parts diagram for orientation)

**NOTE:** It is recommended that the muffler and tailpipe be wiped down with rubbing alcohol to remove oil and fingerprints. This will help prevent tarnishing of the finish after the exhaust is heated up.

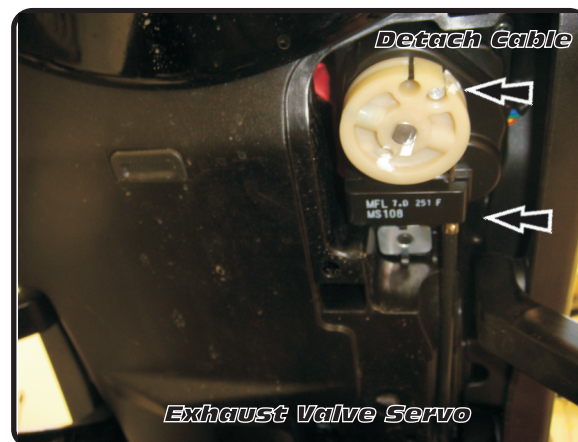


Fig. 1



Fig. 2

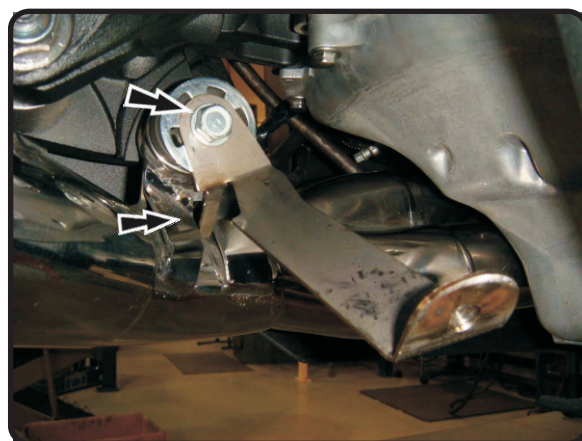


Fig. 3

8. Reinstall lower left cowl bolt and exhaust valve control cover.
9. Check for proper clearance between new exhaust system and rear suspension (i.e. tire, swing-arm, brake, rear shock etc).

*Adjustment of tailpipe and/or muffler may be necessary to achieve desired fit.*

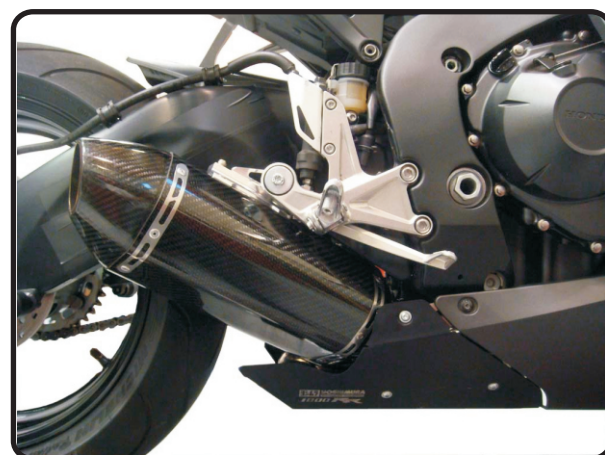
*Note: If bike does not come with O2 sensor install supplied 12mm bolt and crush washer into Yoshimura tailpipe.*

*If any problem is found, please carefully follow through the installation steps again. If problem still persists, please call Yoshimura technical department at (800) 634-9166 / in CA (909) 628-4722 .*

**\*\* NOTE:** After starting the vehicle, it is normal for a new exhaust system and muffler to emit smoke until oil residue burns off.



**Fig. 4**



**Fig. 5**

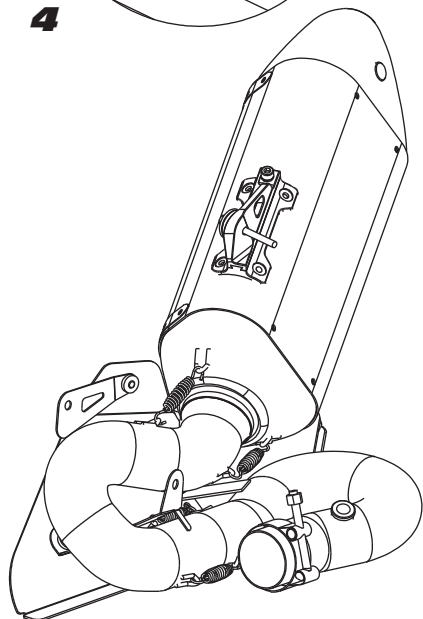
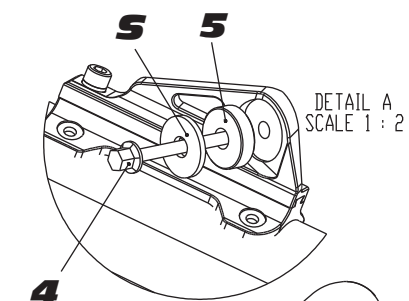
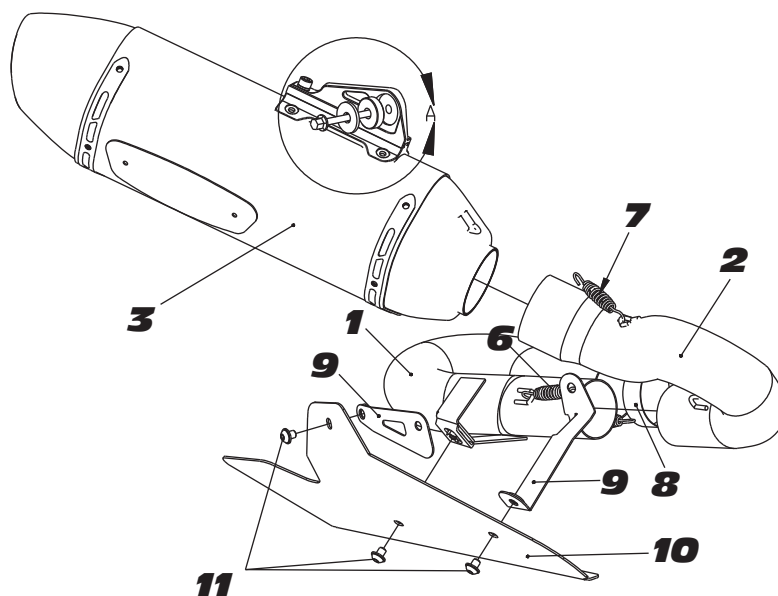
### **Heatshield Installation:**

1. Install heatshield bracket to fairing mount using stock bolt.
  - See Fig. 4 for location.
  - Leave bracket loose to ease alignment of heatshield with heatshield bracket.

2. Install Yoshimura heatshield using supplied heatshield bolts. Torque to 8 lb-ft.

*-Note: Use of blue threadlock or "loc-tite" is recommended.*



**#120220(2,5,6,7)**

**S = STOCK**


Parts Diagram

| NO. | DESCRIPTION                                     | QTY | PART #      |
|-----|---|-----|-------------|
| 1   | Yoshimura Stainless Steel Tailpipe              | 1   | 1201-435-A  |
| 2   | Yoshimura Stainless Steel Tailpipe              | 1   | 1201-436    |
| 3   | R-77 Muffler Assembly                           | 1   |             |
|     | Carbon Fiber Sleeve with Carbon Fiber Endcap    |     | 1201202-RMA |
|     | Stainless Steel Sleeve with Carbon Fiber Endcap |     | 1201205-RMA |
|     | Stainless Steel Sleeve with Stainless Endcap    |     | 1201206-RMA |
|     | Titanium Sleeve with Carbon Fiber Endcap        |     | 1201207-RMA |
| 4   | 8mmX50mm Socket Head Screw                      | 1   | M8X50       |
| 5   | Aluminum Spacer                                 | 1   | 8X7SPC      |
| 6   | Small Exhaust Springs                           | 2   | RACE-SPX-1  |
| 7   | Medium Exhaust Springs                          | 2   | RACE-SPS-1  |
| 8   | Collector Clamp                                 | 1   | 20060       |
| 9   | Yoshimura Heatshield Bracket Set                | 1   | 1201-HSBRKT |
| 10  | Yoshimura Heatshield                            | 1   | 1201-HS-00  |
| 11  | Yoshimura Heatshield Bolts                      | 3   | RC116HSB-BK |
| **  | 12mmX8mm Flanged Hex Head Bolt                  | 1   | M12X8H      |
| **  | M12 Copper Crush Washer                         | 1   | M12CWSH     |
| **  | Yoshimura Spring Puller Tool                    | 1   | ST-200      |
| **  | Yoshimura Quiet Insert Kit                      | 1   | INS-04-K    |
| **  | Yoshimura Vinyl Sticker                         | 1   | 17029       |

