



YOSHIMURA

RESEARCH&DEVELOPMENT OF AMERICA, INC.

5420 DANIELS STREET STE A, CHINO CA., 91710 · (800)634-9166 · (909)628-4722 · FACSIMILE (909)591-2198

www.yoshimura-rd.com

YOSHIMURA PERFORMANCE EXHAUST SYSTEM

SUZUKI
2009-2010
GLADIUS 650

1140272	STAINLESS STEEL SLIP-ON WITH CARBON FIBER TRC
1140275	STAINLESS STEEL SLIP-ON WITH STAINLESS STEEL TRC AND CF ENDCAP
1140277	STAINLESS STEEL SLIP-ON WITH TITANIUM SLEEVE AND CF ENDCAP



THIS PRODUCT IS DESIGNED FOR USE IN CLOSED COURSE RACING AND IS NOT INTENDED FOR HIGHWAY USE.



NOTE: IN THE STATE OF CALIFORNIA, IT IS ILLEGAL TO MODIFY THE EMISSION CONTROL SYSTEM, WHICH INCLUDES THE FUEL INJECTION OF ANY VEHICLE.

Caution: Exhaust system can be extremely hot. Let motorcycle cool down before beginning installation. Always wear hand and eye protection and take precautionary measures to avoid injury.

Note: Read through all instructions before beginning installation.

Tools Needed:

Metric Socket Set

Ratchet and Extension

Metric Combination Wrench Set

Metric Allen Wrench Set

Torque Wrench

Installation Steps:

1. Loosen collector clamp.
2. Remove muffler mounting bolt and remove muffler. (Note: If gasket did not come off with muffler remove from tailpipe.)
3. Install rubber heatshield into Yoshimura muffler clamp.
4. Install Yoshimura muffler clamp over Yoshimura muffler.
5. Remove nut from supplied collector clamp and install onto Yoshimura tailpipe.
6. Install Yoshimura muffler/tailpipe assembly using stock hardware.
7. Standing at the back of the motorcycle, check for proper alignment of the muffler. Adjust if necessary.

NOTE: To adjust fitment, it may be necessary to rotate the tailpipe or the muffler independently until proper alignment of the muffler is achieved.

NOTE: We will be installing a securing rivet into the tailpipe to prevent the tailpipe from rotating while the motorcycle is in operation.

8. Drill a 13/64" hole through the outlet of the stock underbelly muffler, using the securing hole located near the Yoshimura tailpipe inlet as your guide.
- CAUTION:** Always wear eye protection when using any power tools.
9. Insert securing rivet into drilled hole, slide supplied stainless steel collector clamp over rivet. Reinstall nut and torque clamp to 1.25 kg-m (9 lb-ft).
 10. Torque muffler mounting bolt to 16.5 lb-ft (2.27 kg-m).
 11. Install Yoshimura tailpipe heatshield using supplied bolts.

12. Check for proper clearance between new exhaust system and motorcycle. (i.e. Swing-arm, body work, etc.) If any problem is found, please carefully follow through the installation steps again. If problem still persists, please call Yoshimura technical department at (800)634-9166 / in CA (909)628-4722.



Fig. 1



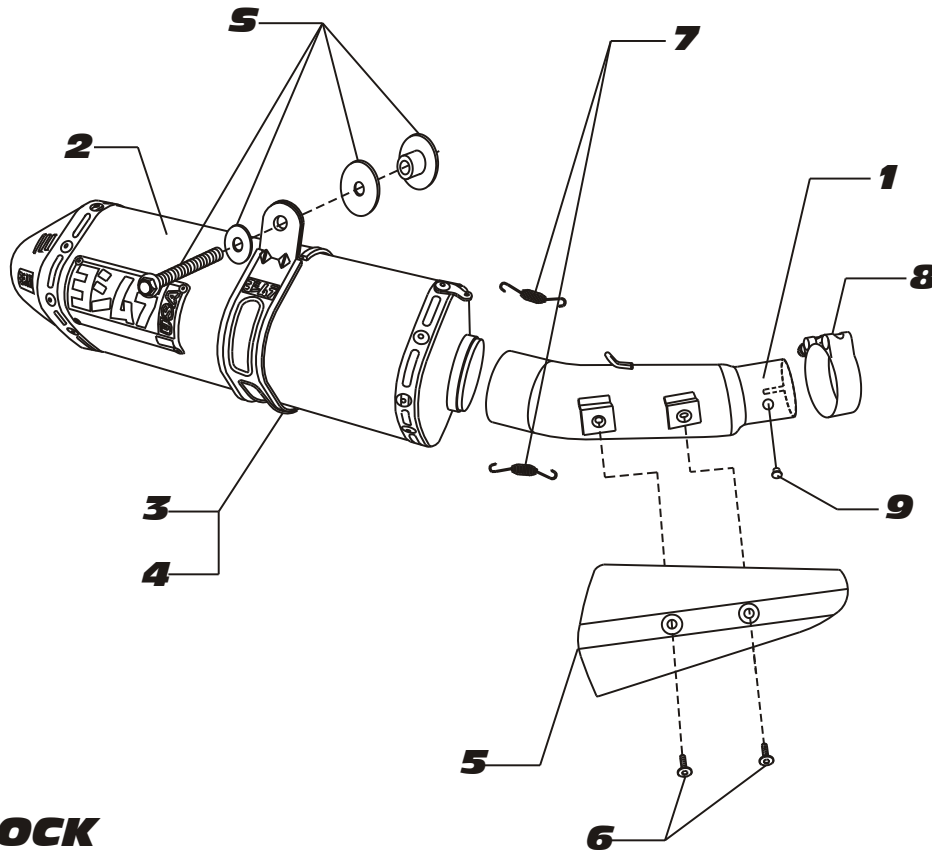
Fig. 2



Fig. 3

Note: After starting motorcycle, it is normal for new exhaust system and muffler to smoke until oil residue burns off.

#114027(2,5,7)



S=STOCK

Parts Diagram

NO.	DESCRIPTION	QTY	PART #
1	Yoshimura Tailpipe	1	1140-435
2	Yoshimura R55 Muffler with Carbon Fiber TRC with Stainless Steel TRC with Titanium TRC	1	1140272-RMA 1140275-RMA 1140277-RMA
3	TRS Muffler Clamp for Carbon Fiber for Stainless and Titanium	1	CTS081 CTS081X
4	Heatshield for Muffler Clamp	1	HT SHLDR77
5	Yoshimura Heatshield	1	1406272-HS
6	Heatshield Mounting Bolts	2	RC116HSB
7	Small Exhaust Spring	2	RACE-SPX-1
8	Exhaust Collector Clamp	1	20057
9	Securing Rivet	1	S-RIVET
**	Spring Puller Tool	1	ST-200
**	Low Volume Insert	1	TRC-INS-K
**	Yoshimura Vinyl Sticker	1	17029