



YOSHIMURA

RESEARCH&DEVELOPMENT OF AMERICA, INC.

5420 DANIELS STREET STE A, CHINO CA., 91710 · (800)634-9166 · (909)628-4722 · FACSIMILE (909)591-2198

www.yoshimura-rd.com

YOSHIMURA PERFORMANCE EXHAUST SYSTEM

SUZUKI
2007-2008
GSX-R1000

1117002	R77 FULL SYSTEM WITH CARBON FIBER SLEEVE
1117005	R77 FULL SYSTEM WITH STAINLESS SLEEVE
1117006	R77 FULL SYSTEM WITH SS SLEEVE AND SS ENDCAP
1117007	R77 FULL SYSTEM WITH TITANIUM SLEEVE



THIS PRODUCT IS DESIGNED FOR USE IN CLOSED COURSE RACING AND IS NOT INTENDED FOR HIGHWAY USE.



NOTE: IN THE STATE OF CALIFORNIA, IT IS ILLEGAL TO MODIFY THE EMISSION CONTROL SYSTEM, WHICH INCLUDES THE FUEL INJECTION OF ANY VEHICLE.

Caution: Exhaust system can be extremely hot. Let motorcycle cool down before beginning installation.

Note: Read through all instructions before beginning installation.

Tools Needed:

Metric Socket Set
3/8" ratchet and extension
Metric Combination Wrench Set
Metric Allen Wrench Set
Torque Wrench
Small Flat Head Screwdriver

Installation Steps:

- 1 Remove stock right side tailpipe heatshield (see Fig. 1).
 - 2 Loosen left and right stock collector clamps (see Fig. 2 and 3).
 - 3 Unbolt and remove left and right stock mufflers from passenger foot rest mounts.
 - 4 Remove left and right fairings. Remove underbelly muffler and underbelly muffler mounting brackets.
 - 5 Completely remove exhaust valve cables. Do not remove or unplug exhaust valve servo motor. Only the exhaust valve cables are to be removed. Unscrew O2 sensor. Remove stock header and exhaust port gaskets.
- NOTE:** This Yoshimura full system is designed to be installed without exhaust port gaskets. If exhaust port gaskets are used, there may be insufficient clearance between the header and radiator.
- 6 Drain oil and remove oil cooler and oil lines from motorcycle as one unit. Remove lower radiator bracket and tilt radiator forward.
 - 7 Install Yoshimura manifolds and flanges into exhaust ports using stock header nuts (see Fig. 4 for flange orientation).
 - 8 Torque header nuts to 1.0 kgf-m (7.3 lb-ft).
 - 9 Install Yoshimura header from one end of the engine to the other by slipping one tube at a time onto manifolds.
 - 10 Connect header to flanges using the supplied springs.
 - 11 Bolt header to chassis mount using stock bolt and supplied spacer, washer, and nut (see Parts Diagram on the last page).
 - 12 Install chassis mount bolt but do NOT tighten. Install stock O2 sensor into Yoshimura header.

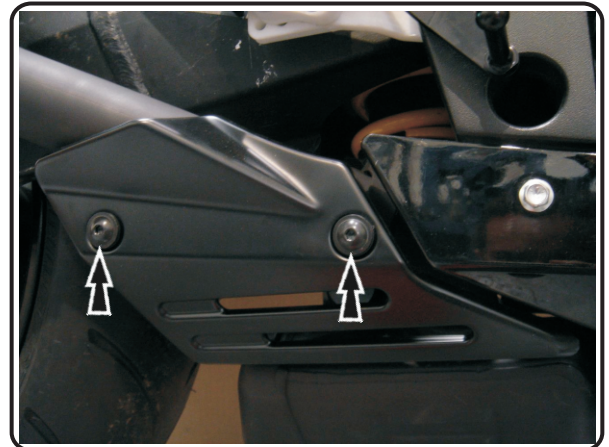


Fig. 1



Fig. 2

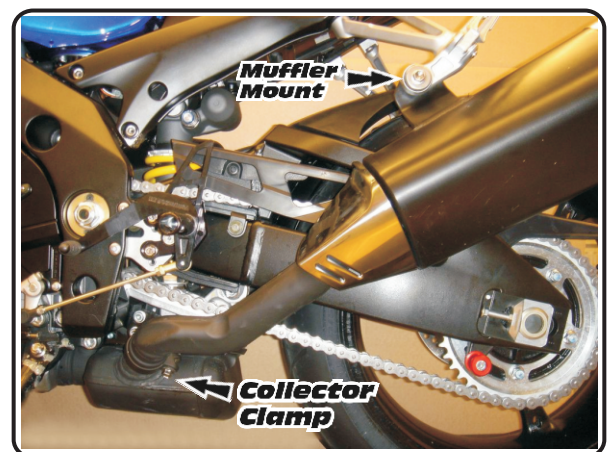
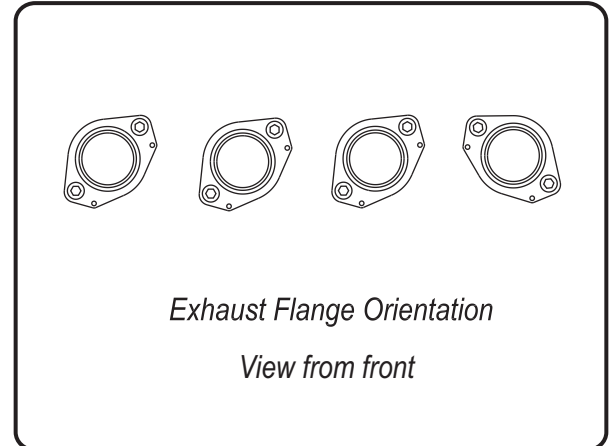


Fig. 3

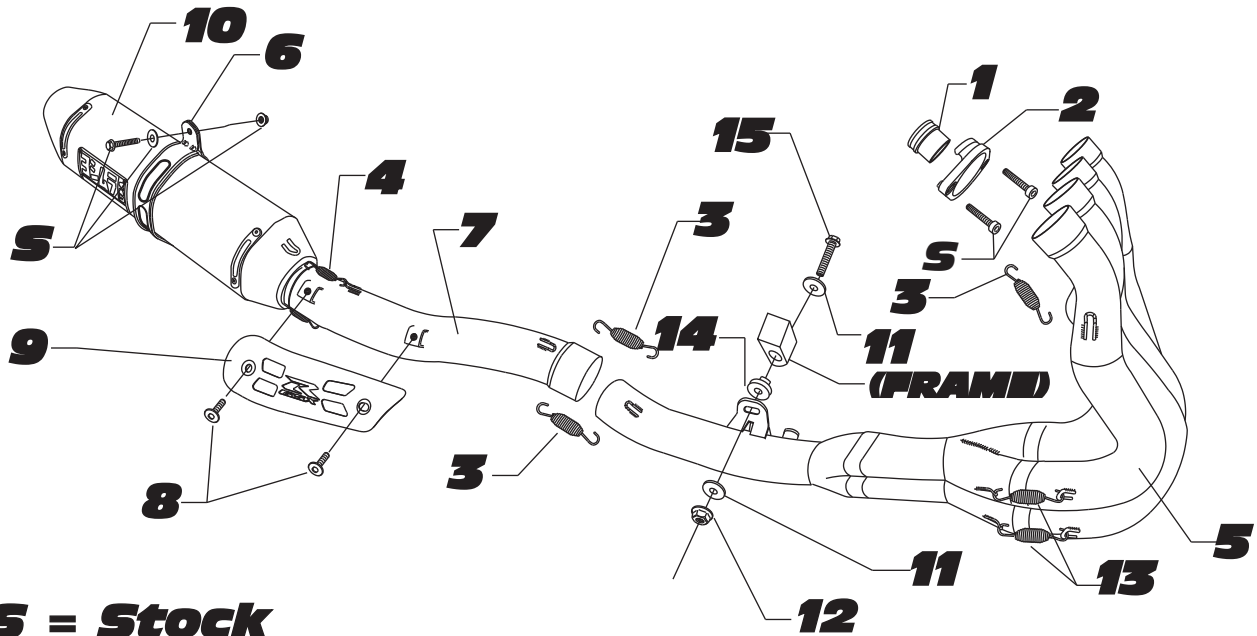
- 13 *Install rubber heat insulator to inside of muffler clamp.*
- 14 *Slip Yoshimura muffler and tailpipe onto the Yoshimura header.*
- 15 *Mount muffler to stock muffler mounting location using stock hardware.*
- 16 *Torque muffler mount bolt to 2.3 kgf-m (16.5 lb-ft).*
- 17 *Check header and position by adjusting header so that chassis mount bolt lines up. Check for clearance between muffler and swingarm. Torque chassis mount bolt to 2.3 kg-m (16.5 lb-ft). Reinstall lower radiator bracket, oil cooler, oil cooler lines, and replace engine oil to proper level.*
- 18 *Make necessary wiring changes as described on page 4 and 5.*

NOTE: *Failure to perform the needed wiring changes will result in the motorcycle running in a performance restricted safe mode.*
- 19 *Reinstall the left and right side fairings.*
- 20 *Install Yoshimura heatshield onto Yoshimura tailpipe using the supplied hardware. (NOTE: Not used with Carbon Fiber System)*
- 21 *It is recommended that the muffler and tailpipe be wiped down with rubbing alcohol to remove oil and fingerprints. This will help prevent tarnishing of the finish after the exhaust is heated up.*
- 22 *Check for proper clearance between new exhaust system and motorcycle. (i.e. Swing-arm, body work, etc.) If any problem is found, please carefully follow through the installation steps again. If problem still persists, please call Yoshimura technical department at (800)634-9166 / in CA (909)628-4722.*

Note: *After starting motorcycle, it is normal for new exhaust system and muffler to smoke until oil residue burns off.*

**Fig. 4**

#111700(2,5,6,7)



Parts Diagram

NO.	DESCRIPTION	QTY	PART #
1	Yoshimura Stainless Steel Manifold	4	1117SDM
2	Yoshimura Stainless Steel Flange	4	YZ117SDR-01
3	Medium Race Spring	8	RACE-SPS-1
4	82MM Race Spring	2	RACE-82MM
5	Yoshimura Header	1	1117-404
6	Stainless Steel Muffler Clamp Stainless Steel or Titanium Sleeve use Carbon Fiber Sleeve use	1	1121-MPCAX 1121-MPCA
7	Yoshimura Tailpipe	1	1117-419
8	Heatshield Bolts	2	RC116HSB
9	Yoshimura Heatshield	1	1117-HSR
10	Yoshimura R77 Muffler with Carbon Fiber Sleeve with Stainless Steel Sleeve with SS Sleeve and SS Endcap with Titanium Sleeve	1	CRR77146W SRR77146W SRR77146W-SS TRR77146W
11	Large 8mm Washer	2	8MMWASHERL
12	8mm Nut	1	8MMNUT
13	Small Race Spring	4	RACE-SPX-1
14	Aluminum Spacer	1	ALS-014
15	8mmX45 Flanged Hex Head Bolt	1	M8X45H
**	Muffler Clamp Heat Insulator	1	HT SHLDR77
**	Spring Puller Tool	1	ST-200
**	Yoshimura Sticker Kit Sheet	1	17029