



YOSHIMURA

RESEARCH&DEVELOPMENT OF AMERICA, INC.

5420 DANIELS STREET STE A, CHINO CA., 91710 · (800)634-9166 · (909)628-4722 · FACSIMILE (909)591-2198

www.yoshimura-rd.com

YOSHIMURA PERFORMANCE EXHAUST SYSTEM

SUZUKI
2006-2007
GSX-R600/750

1104288	R55 SLIP-ON SYSTEM WITH CARBON FIBER ENDCAP
1104286	R55 SLIP-ON SYSTEM WITH STAINLESS STEEL ENDCAP



THIS PRODUCT IS DESIGNED FOR USE IN CLOSED COURSE RACING AND IS NOT INTENDED FOR HIGHWAY USE.



NOTE: IN THE STATE OF CALIFORNIA, IT IS ILLEGAL TO MODIFY THE EMISSION CONTROL SYSTEM. WHICH INCLUDES THE CARBURETORS OF ANY VEHICLE.

Caution: Exhaust system can be extremely hot. Let motorcycle cool down before beginning installation.

Note: Read through all instructions before beginning installation.

Tools Needed:

11 and 12mm socket
3/8" ratchet and extension
12mm wrench
4mm and 6mm allen wrench
Torque wrench

Installation Steps:

- 1 Remove left and right side fairings (see Fig. 1 and Fig. 2).
- 2 Remove stock muffler and stock muffler gasket (see Fig. 3 and Fig. 4).
- 3 Remove stock rear muffler bracket.

- 4 Slide supplied collector clamp over inlet of Yoshimura oval muffler and slide oval muffler onto stock header outlet (see Parts Diagram on page 4).

NOTE: Stock gasket is not re-used between oval muffler and stock header.

- 5 Install oval muffler and Yoshimura tailpipe using stock muffler mount bolts, supplied nuts, supplied large washer, rubber grommet, small aluminum insert, and springs (see Parts Diagram on page 4).
- 6 Unbolt stock right rearset from stock right adjustable mounting plate.
- 7 Unhook spring from rear brake light switch.
- 8 Sandwich Yoshimura R55 aluminum muffler bracket between the stock right rearset and stock right adjustable rearset mounting plate using stock bolts (see Fig.5).
- 9 Torque stock right rearset bolts to 2.8 kgf-m (20 lb-ft).

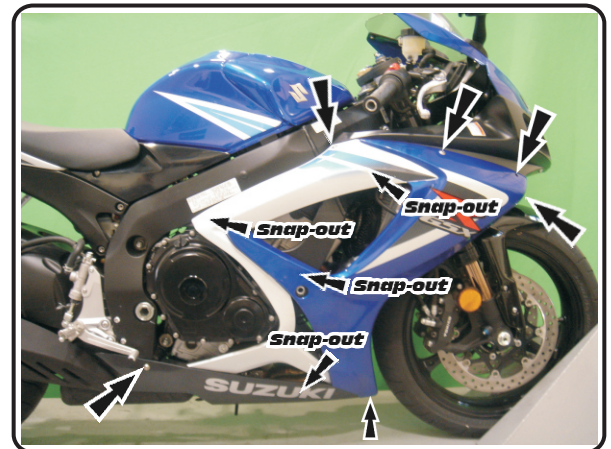


Fig. 1



Fig. 2

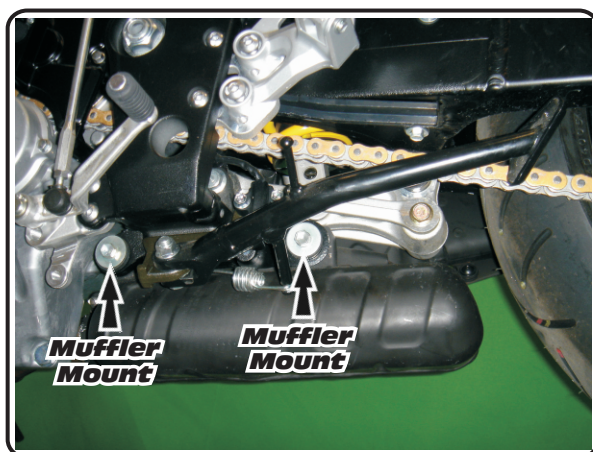


Fig. 3

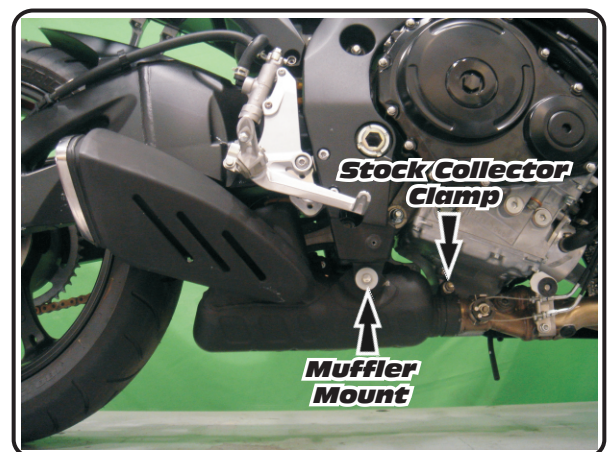


Fig. 4

- 10 Reinstall rear brake light switch spring.
- 11 Slide Yoshimura R55 muffler onto Yoshimura tailpipe. Connect R55 muffler to tailpipe using the supplied exhaust springs (see Parts Diagram on page 4).
- 12 Mount R55 muffler to R55 mounting bracket using the supplied bolt, small washer, and spacer nut (see Parts Diagram on page 4).
- 13 Torque muffler mount bolt to 2.3 kgf-m (16.5 lb-ft).
- 14 Torque supplied collector clamp to 1.1 kgf-m (8 lb-ft).
- 15 Reinstall left and right side fairings.
- 16 It is recommended that the muffler and tailpipe be wiped down with rubbing alcohol to remove oil and fingerprints. This will help prevent tarnishing of the finish after the exhaust is heated up.
- 17 Check for proper clearance between new exhaust system and motorcycle (i.e. Swing-arm, body work, etc.). If any problem is found, please carefully follow through the installation steps again. If problem still persists, please call Yoshimura technical department at (800)634-9166 / in CA (909)628-4722.

Note: After starting motorcycle, it is normal for new exhaust system and muffler to smoke until oil residue burns off.

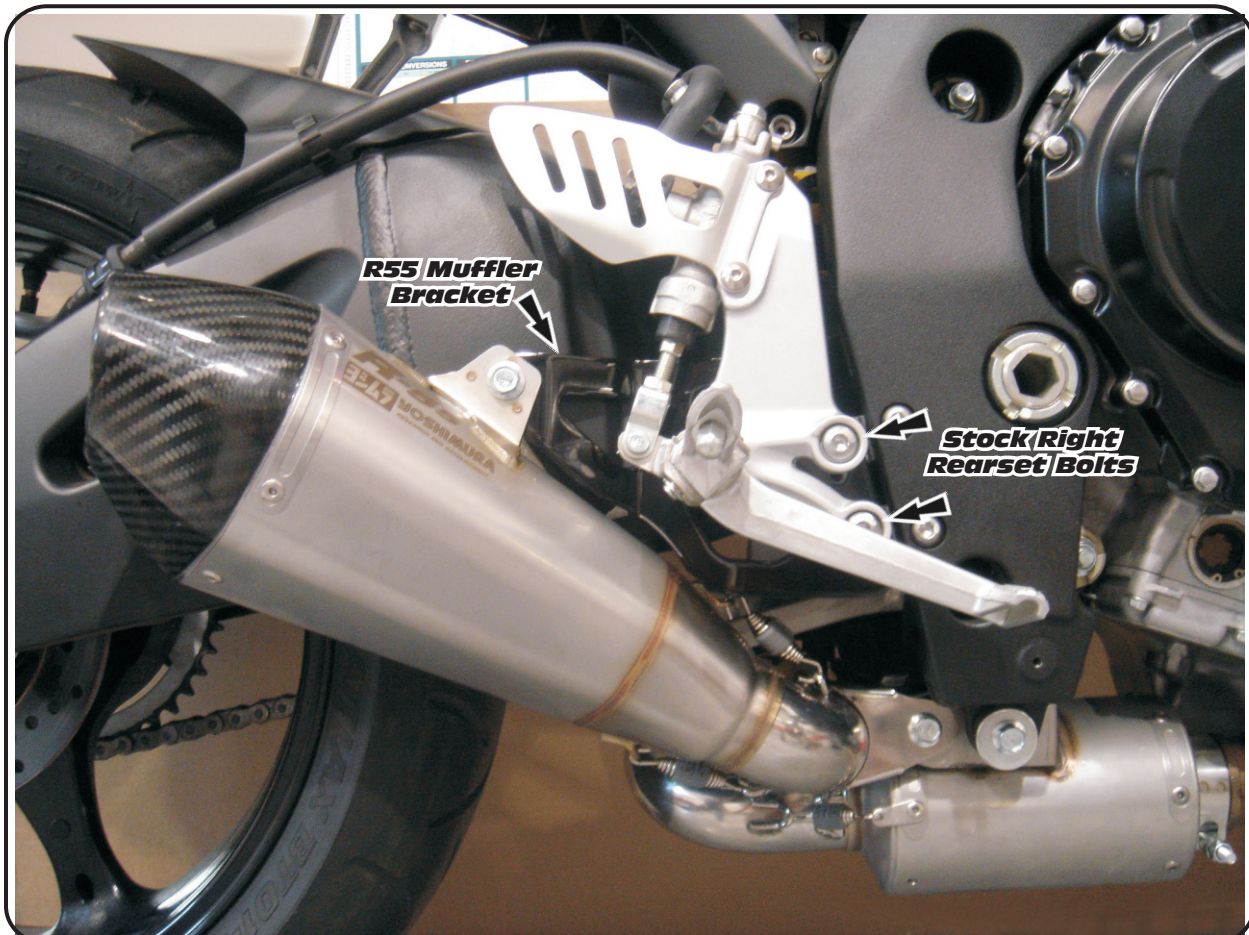
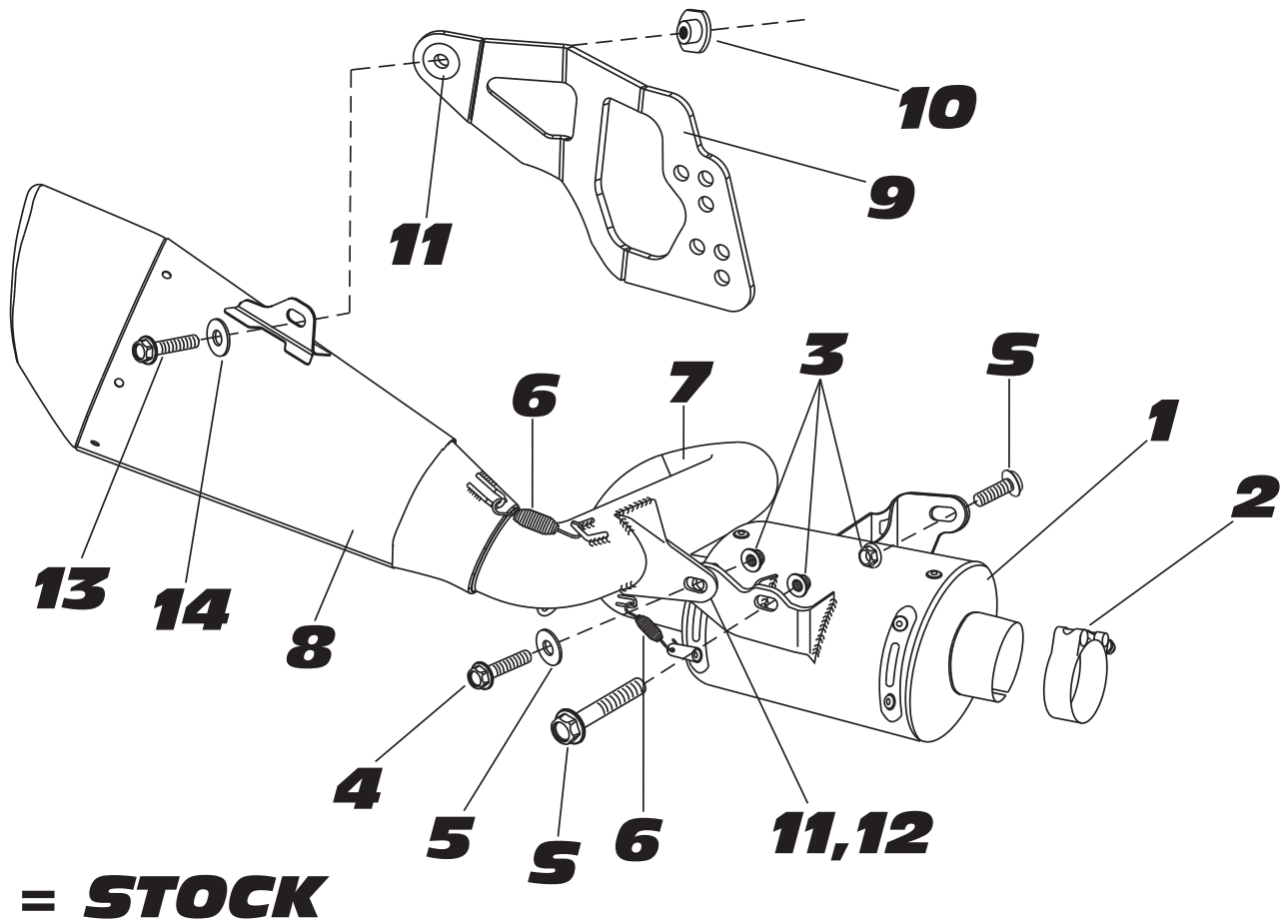


Fig. 5

#110428(6,8)



Parts Diagram

NO.	DESCRIPTION	QTY	PART #
1	Yoshimura Oval Muffler	1	1104275-CMA
2	Exhaust Collector Clamp	1	20060
3	Flanged 8mm Nut	3	8MMNUT
4	8mm x 30mm Hex Head Bolt	1	M8X30H
5	Large Washer	1	8MMWASHERL
6	Small Race Spring	4	RACE-SPX-1
7	Yoshimura Tailpipe	1	1104-439
8	Yoshimura R55 Muffler with Carbon Fiber Endcap with Stainless Steel Endcap	1	1104288-RMA 1104286-RMA
9	R55 Muffler Hanger	1	1104MBR55-B
10	Spacer Nut	1	SPCR-NUT-B
11	Rubber Grommet	2	Z1022
12	Aluminum Insert For Rubber Grommet	1	8X127SP
13	8mm x 20mm Button Head Bolt	1	M8X20BHS
14	Small Washer	1	8MMWASHER-SS
**	Spring Puller Tool	1	ST-200
**	Yoshimura Vinyl Sticker	1	17029