



YOSHIMURA

RESEARCH&DEVELOPMENT OF AMERICA, INC.

5420 DANIELS STREET STE A, CHINO CA., 91710 · (800)634-9166 · (909)628-4722 · FACSIMILE (909)591-2198

www.yoshimura-rd.com

YOSHIMURA PERFORMANCE EXHAUST SYSTEM

2006-2007

SUZUKI

GSX-R600

GSX-R750

1104272

TRC SLIP-ON SYSTEM WITH CARBON FIBER SLEEVE

1104275

TRC SLIP-ON SYSTEM WITH STAINLESS SLEEVE

1104277

TRC SLIP-ON SYSTEM WITH TITANIUM SLEEVE



THIS PRODUCT IS DESIGNED FOR USE IN CLOSED COURSE RACING AND IS NOT INTENDED FOR HIGHWAY USE.



NOTE: IN THE STATE OF CALIFORNIA, IT IS ILLEGAL TO MODIFY THE EMISSION CONTROL SYSTEM. WHICH INCLUDES THE CARBURETORS OF ANY VEHICLE.

Caution: Exhaust system can be extremely hot. Let motorcycle cool down before beginning installation.

Note: Read through all instructions before beginning installation.

Tools Needed:

- 11 and 12mm socket
- 3/8" ratchet and extension
- 12mm wrench
- 4mm and 6mm allen wrench
- Torque wrench

Installation Steps:

- 1 Remove left and right side fairings (see Fig. 1 and Fig. 2).
 - 2 Remove stock muffler and stock muffler gasket (see Fig. 3 and Fig. 4).
 - 3 Loosen the stock header where it meets the cylinder head.
 - 4 Slide supplied collector clamp over inlet of Yoshimura oval muffler and slide oval muffler onto stock header outlet (see Parts Diagram on page 4).
- NOTE: Stock gasket is not used between oval muffler and stock header.
- 5 Install oval muffler using stock muffler mount bolts and supplied nuts.
 - 6 Slide Yoshimura tailpipe #1 into oval muffler. Connect Yoshimura tailpipe #1 to oval muffler using the supplied exhaust springs, bolt, washer, and nut (see Parts Diagram on page 4).
 - 7 Slide Yoshimura tailpipe #2 and Yoshimura TRC muffler over Yoshimura tailpipe #1. Connect tailpipe #1 to tailpipe #2 using the supplied exhaust springs.

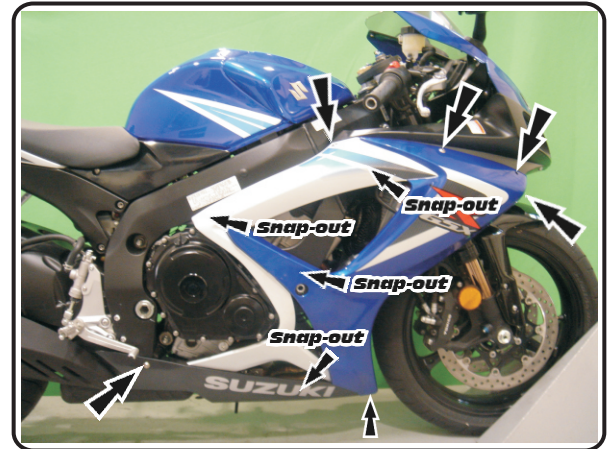


Fig. 1



Fig. 2

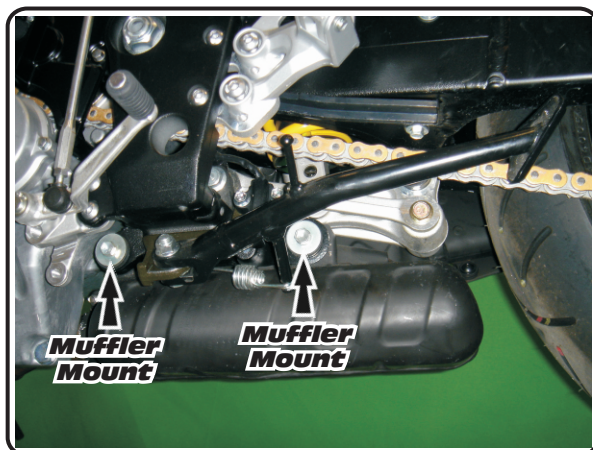


Fig. 3

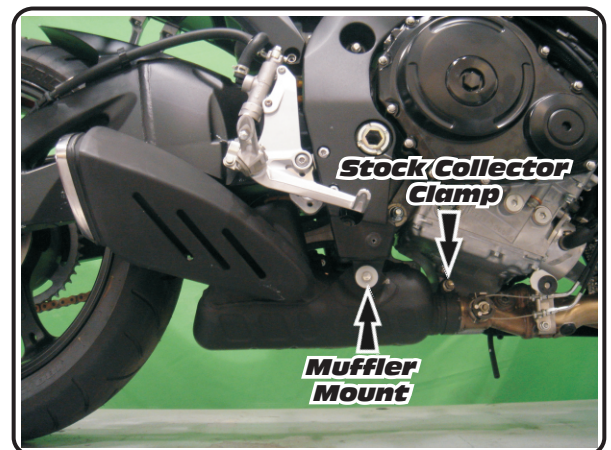
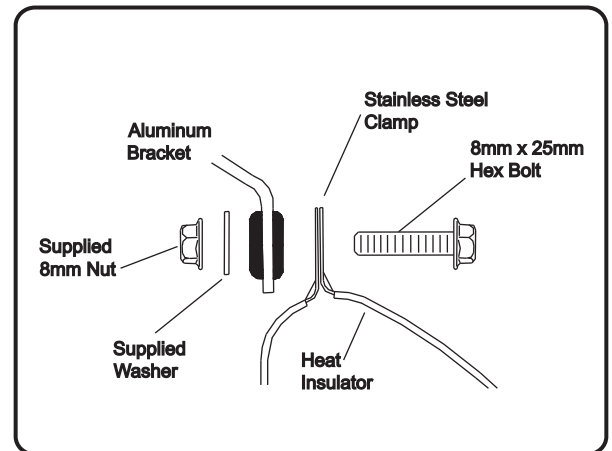


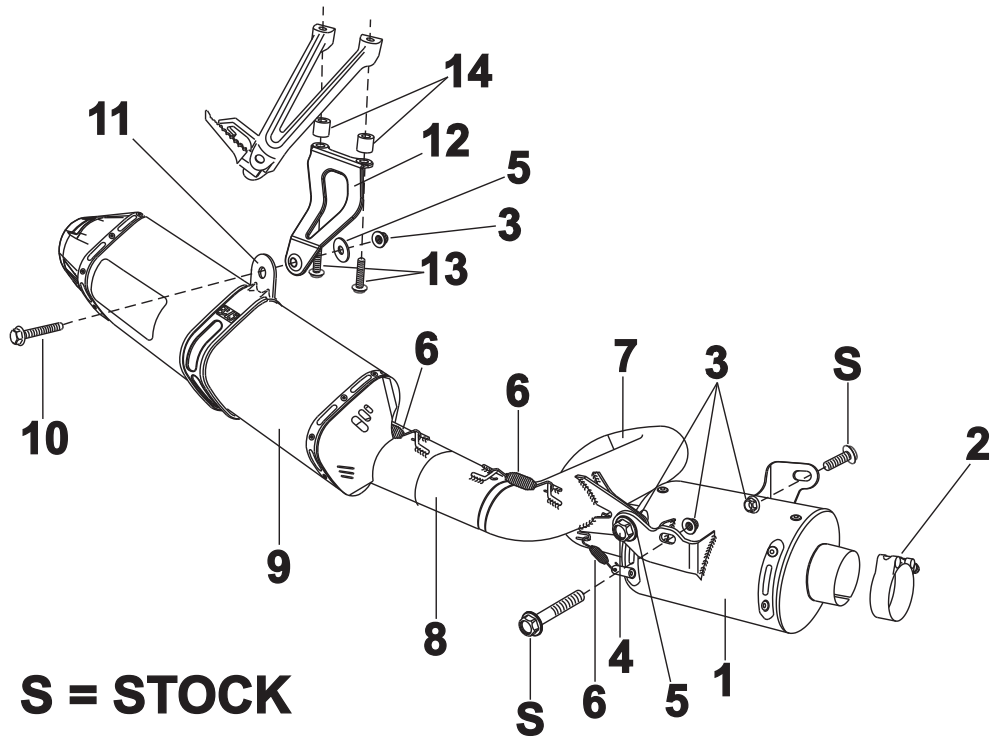
Fig. 4

- 8 Tighten and re-torque the headers to 1.0 kgf-m (7.3 lb-ft).
- 9 Remove right passenger footpeg bolts. Install the Yoshimura aluminum muffler bracket under the stock footpeg using the two supplied 8mm x 45mm long bolts and two supplied aluminum spacers (see Parts Diagram on page 4).
- 10 Mount TRC muffler to muffler bracket using the supplied bolt, washer, and nut (see Fig. 5 and Parts Diagram on page 4).
- 11 Torque all muffler mount bolts to 2.3 kgf-m (16.5 lb-ft).
- 12 Torque supplied collector clamp to 1.1 kgf-m (8 lb-ft).
- 13 Reinstall left and right side fairings.
- 14 It is recommended that the muffler and tailpipe be wiped down with rubbing alcohol to remove oil and fingerprints. This will help prevent tarnishing of the finish after the exhaust is heated up.
- 15 Check for proper clearance between new exhaust system and motorcycle. (i.e. Swing-arm, body work, etc.) If any problem is found, please carefully follow through the installation steps again. If problem still persists, please call Yoshimura technical department at (800)634-9166 / in CA (909)628-4722.

Note: After starting motorcycle, it is normal for new exhaust system and muffler to smoke until oil residue burns off.

**Fig. 5**

#110427(2,5,7)

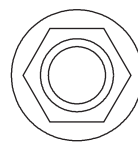


S = STOCK

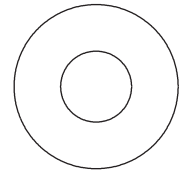
Parts Diagram

3	Flanged 8mm Nut	4	8MMNUT
4	8mm x 30mm Hex Head Bolt	1	M8X30H
5	Large Washer	2	8MMWASHERL
6	Small Race Spring	6	RACE-SPX-1
7	Yoshimura Tailpipe #1	1	1104-439
8	Yoshimura Tailpipe #2	1	1104-440
9	Yoshimura TRC Muffler with Carbon Fiber Sleeve with Stainless Steel Sleeve with Titanium Sleeve	1	CRTRC126W SRTRC126W TRTRC126W
10	8mm x 25mm Hex Head Bolt	1	M8X25H
11	Stainless Steel Muffler Clamp Stainless Steel or Titanium Sleeve use Carbon Fiber Sleeve use	1	CTS081X CTS081
12	Aluminum Muffler Bracket (Retains Passenger Peg)	1	1104AB2-B
13	8mm x 45mm Hex Head Bolt	2	M8X45H
14	Spacers for Aluminum Muffler Bracket	2	1104AB-SPC
**	Muffler Clamp Heat Insulator	1	HT SHLDTRS
**	Rubber Grommet	2	Z1022
**	Aluminum Insert For Rubber Grommet	2	8X127SP
**	Spring Puller Tool	1	ST-200
**	Yoshimura Vinyl Sticker	1	17029

Nuts and Bolts Guide (Actual Size):



8mm Flange Nut



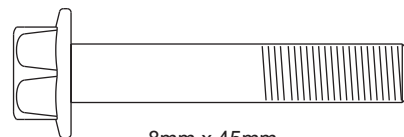
8mm Large Flat Washer



8mm x 30mm
Flange Hex Bolt



8mm x 25mm
Flange Hex Bolt



8mm x 45mm
Flange Hex Bolt