



YOSHIMURA

RESEARCH & DEVELOPMENT OF AMERICA, INC.

5420 DANIELS STREET STE A, CHINO CA 91710 · (800)634-9166 · (909)628-4722 · FACSIMILE (909)591-2198

WWW.YOSHIMURA-RD.COM

OFF-ROAD PERFORMANCE EXHAUST SYSTEM

Yamaha
2010-2012
YZ450F

234802D321

STAINLESS STEEL SLIP-ON SYSTEM WITH ALUMINUM SLEEVE RS4



THIS PRODUCT IS DESIGNED FOR USE IN CLOSED COURSE RACING AND IS NOT INTENDED FOR ANY OTHER USE.



CAUTION: The muffler packing on this system **MUST** be replaced every 6-8 hours of use, or after each moto. Failure to follow recommended muffler re-packing interval can cause muffler damage and may void the warranty.



NOTE: IN THE STATE OF CALIFORNIA, IT IS ILLEGAL TO MODIFY THE EMISSION CONTROL SYSTEM FOR HIGHWAY OR OFF-HIGHWAY USE, WHICH INCLUDES THE FUEL INJECTION SYSTEM OR CARBURETOR OF ANY VEHICLE.

Caution: Exhaust system can be extremely hot. Let motorcycle cool down before beginning installation. Always wear hand and eye protection and take precautionary measures to avoid injury.
Note: Read through all instructions before beginning installation.

Tools Needed:

Metric Socket Set
Ratchet Wrench and Extension
Torque Wrench

Installation Steps:

1. Stock exhaust removal.

- Remove bolts holding right side panel. (Fig. 1)
- Remove right side panel.
- Loosen the muffler clamp.
- Remove the 2 bolts that hold the muffler assembly to subframe. (See Fig. 2)
- Remove muffler with clamp.
Note: Make sure to remove the muffler gasket with the muffler, as this gasket will NOT be reused with the Yoshimura Exhaust system.

2. Yoshimura Slip-on system installation.

- Slide supplied muffler clamp over tailpipe and leave loose.
Note: Make sure clamp orientation is installed as shown in Fig. 3.
- Install supplied muffler bracket using the hardware provided in the kit. See diagram for orientation.
- Install Yoshimura muffler assembly onto stock tailpipe.
- Using supplied bolt, secure Yoshimura muffler to subframe. Torque both muffler bracket bolts to 16.5 lb-ft (23 N-m).
- Rotate muffler clamp as shown in Fig. 3 and tighten muffler clamp to 16.5 lb (23 N-m).



Fig. 1



Fig. 2

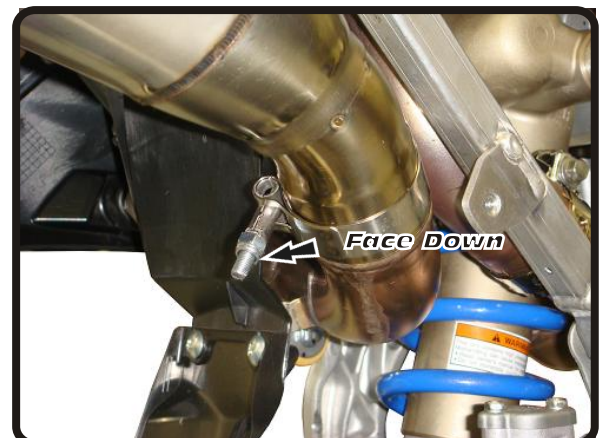


Fig. 3

3. *Reinstall stock side panel using the reverse steps of removal.*
4. *Before starting motorcycle, check for proper clearance between new exhaust system and rear suspension (i.e. tire, swing-arm, brake, rear shock, engine etc). If any problem is found, please carefully follow through the installation steps again. If problem still persists, please call Yoshimura Tech Department at (800) 634-9166 / in CA (909) 628-4722.*

It is recommended that the muffler and tailpipe be wiped down with rubbing alcohol to remove oil and fingerprints. This will help prevent tarnishing of the finish after the exhaust is heated up.

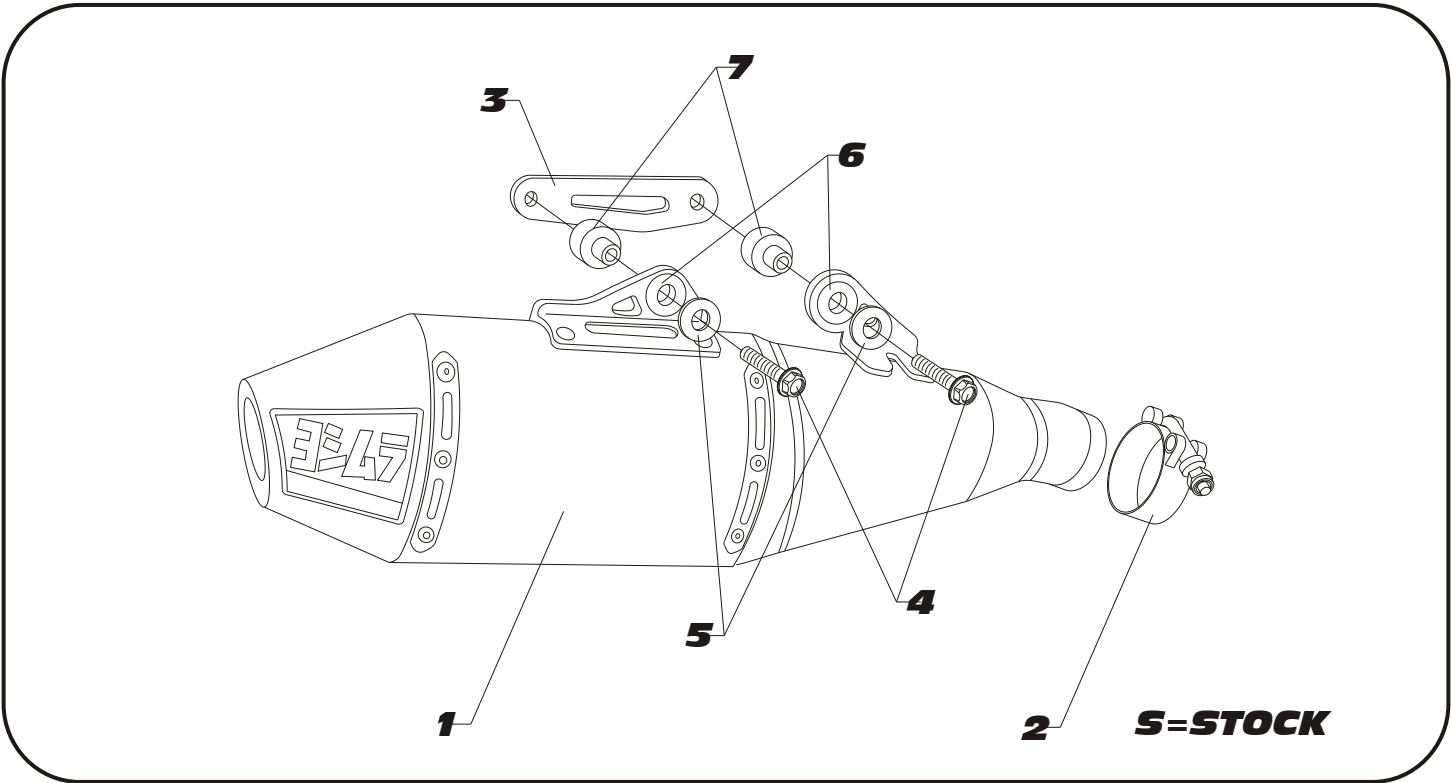
NOTE: *After starting motorcycle, it is normal for new exhaust system and muffler to emit smoke until oil residue burns off.*

Fuel Injection Mapping:

For best results and to extract the most performance out of the Yoshimura system fuel injection mapping is recommended for closed course competition use only.

Yoshimura R&D offers the PIM2 Fuel Injection controller kit with optional DATA Box. Please contact your dealer or Yoshimura R&D for details.

#234802D321



Parts Diagram

NO.	DESCRIPTION	QTY	PART #
1	Yoshimura RS4 Muffler Assembly	1	234802D321-RMA
2	Muffler Clamp	1	20062
3	Muffler Mount Bracket	1	2348-BRKT
4	8mm X 45mm Flanged Hex Head Bolt	2	M8X45H
5	8mm Flat Washer	2	8MMWASHERL
6	Rubber Mount Grommet	2	Z1022
7	Aluminum Spacer Insert	2	ALS-010
**	AMA 94dB Sound Insert (Installed)	1	INS-14-K
**	2m-MAX Sound Insert	1	INS-2M28-K
**	Offroad Endcap Plug	1	347PLUG
**	Yoshimura Vinyl Sticker	1	17029
OPTIONAL REPLACEMENT PARTS			
Spark Arrestor		SA-04-K	
Re-pack Kit		REPACK-RS4-PK11	



YOSHIMURA

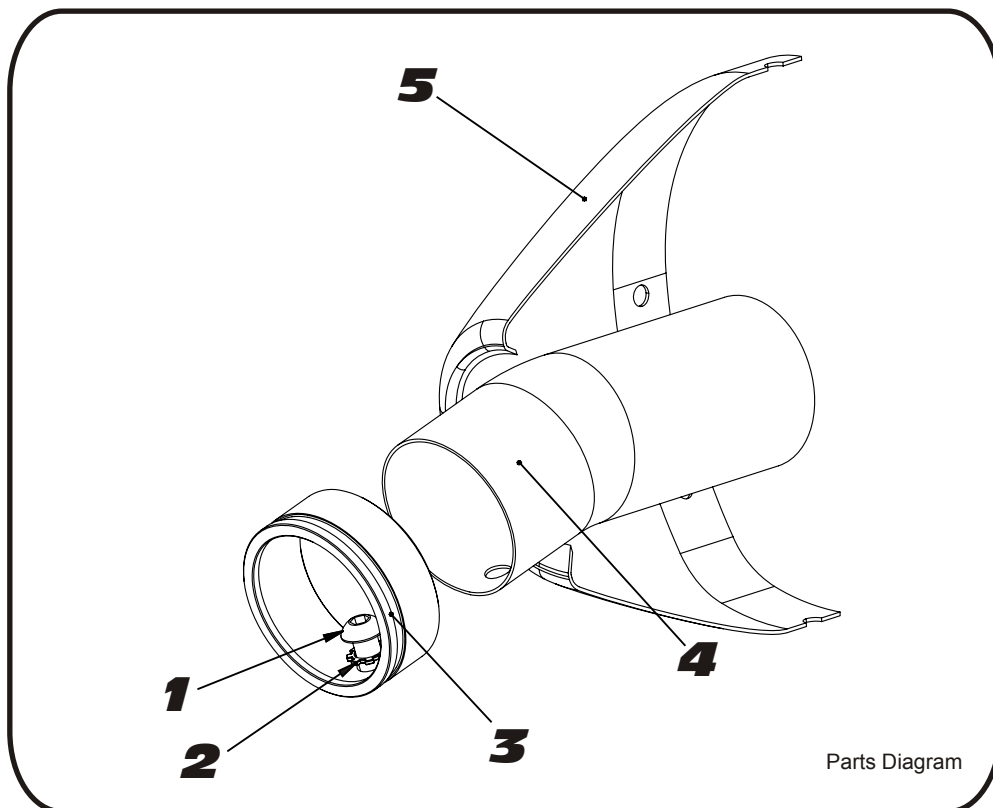
RESEARCH & DEVELOPMENT OF AMERICA, INC.

5420 DANIELS STREET SUITE A, CHINO, CA 91710 · (800)634-9166 · (909)628-4722 · FACSIMILE (909)591-2198

www.yoshimura-rd.com

INS-14-K

YOSHIMURA RS4 LOW VOLUME INSERT KIT



NO.	DESCRIPTION	QTY	PART #
1	6mm X 12mm Button Head Cap Screw	1	M6X12BHS
2	6mm Lock Washer	1	6MMLCKWSHR-TH
3	RS4 Spark Arrestor Ring 1.500"	1	RS4-RING-1500
4	AMA 94dB Sound Insert	1	INS-U
5	Yoshimura Exhaust	**	**

- 1 Using a 4mm Allen key, remove the bolt that secures the aluminum ring and sound insert to the muffler (see Parts Diagram for location).
- 2 Remove the sound insert from the muffler.
- 3 Inspect the sound insert for cracks or damage and replace if necessary.
- 4 Re-install sound insert and aluminum ring. Torque the sound insert securing bolt to 1.0 kg-m (7.3 lb-ft).
NOTE: It is recommended that a low strength "Loc-tite" is used on the sound insert securing bolt.