



YOSHIMURA

RESEARCH&DEVELOPMENT OF AMERICA, INC.

5420 DANIELS STREET STE A, CHINO CA 91710 · (800)634-9166 · (909)628-4722 · FACSIMILE (909)591-2198

WWW.YOSHIMURA-RD.COM

OFF-ROAD PERFORMANCE EXHAUST SYSTEM

Yamaha
2010-2013
YZ450F

234800D321

STAINLESS STEEL FULL SYSTEM WITH ALUMINUM SLEEVE RS4



THIS PRODUCT IS DESIGNED FOR USE IN CLOSED COURSE RACING AND IS NOT INTENDED FOR ANY OTHER USE.



CAUTION: The muffler packing on this system **MUST** be replaced every 6-8 hours of use, or after each moto. Failure to follow recommended muffler re-packing interval can cause muffler damage and may void the warranty.



NOTE: IN THE STATE OF CALIFORNIA, IT IS ILLEGAL TO MODIFY THE EMISSION CONTROL SYSTEM FOR HIGHWAY OR OFF-HIGHWAY USE, WHICH INCLUDES THE FUEL INJECTION SYSTEM OR CARBURETOR OF ANY VEHICLE.

Caution: Exhaust system can be extremely hot. Let motorcycle cool down before beginning installation. Always wear hand and eye protection and take precautionary measures to avoid injury.
Note: Read through all instructions before beginning installation.

Tools Needed:

- Metric Socket Set
- Ratchet Wrench and Extension
- Torque Wrench
- Metric Wrench Set

Installation Steps:

1. Stock exhaust system removal.

- Remove bolts holding right and left side panel. (Fig. 1)
- Remove right and left side panel.
- Loosen the muffler clamp.
- Remove the (2) bolts that hold the muffler assembly to subframe. (Fig. 2)
- Remove muffler with clamp.
- Remove stock rear fender assembly by removing 3 bolts beneath subframe (Fig. 3) and one bolt on each side of subframe.
- Remove stock tailpipe bolt. (Fig. 4) Loosen stock header clamp and remove tailpipe through opening in rear of subframe.
- Remove stock exhaust header by removing (3) nuts (Fig. 5). Pull header back off the exhaust port and rotate left side of header down. Remove header through opening on left side of the frame.
- Remove stock header gasket.



Fig. 1



Fig. 2

2. Yoshimura Full-System installation.

- Install supplied new header gasket onto exhaust port.
- Install Yoshimura header and secure using stock header nuts. Do not tighten at this time.
- Install supplied rubber grommet on tailpipe (Fig. 6).
- Install Yoshimura midpipe onto Yoshimura header through mudflap opening. Secure to subframe using supplied 8mm flange nut and stock bolt and washer. Leave loose temporarily.
- Re-install rear fender assembly using stock bolts and tighten to the following:
 - 2 upper bolts: 13 ft-lb (18 N-m)
 - 3 rear lower bolts: 5.1 ft-lb (7 N-m)

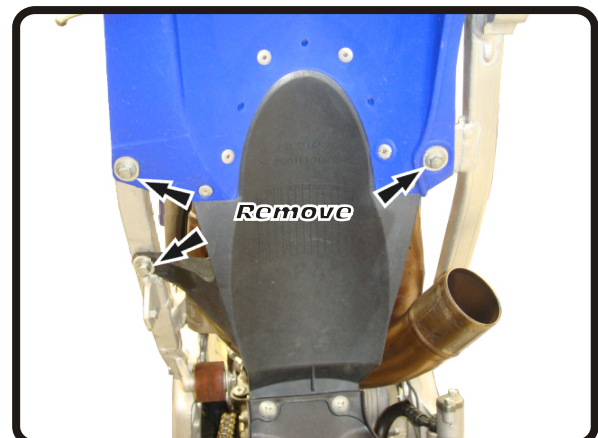


Fig. 3

- Install supplied muffler bracket using the stock bolt on the forward bolt location. Leave the bracket loose.
- Install Yoshimura muffler assembly onto Yoshimura midpipe.
- Using supplied bolt, secure Yoshimura muffler to subframe. Check clearances and orientation of midpipe and muffler. Tighten header nuts to 7.2 ft-lb (10 N-m). Tighten midpipe bolt to 14 ft-lb (20 N-m). Torque both muffler bracket bolts to 22 ft-lb (30 N-m).
- Install header to tailpipe and tailpipe to muffler springs.

3. Reinstall stock side panel using the reverse steps of removal and tighten to 5.1 ft-lb (7 N-m).
4. Before starting motorcycle, check for proper clearance between new exhaust system and rear suspension (i.e. tire, swing-arm, brake, rear shock, engine etc). If any problem is found, please carefully follow through the installation steps again. If problem still persists, please call Yoshimura Tech Department at (800) 634-9166 / in CA (909) 628-4722.

It is recommended that the muffler and tailpipe be wiped down with rubbing alcohol to remove oil and fingerprints. This will help prevent tarnishing of the finish after the exhaust is heated up.

NOTE: After starting motorcycle, it is normal for new exhaust system and muffler to emit smoke until oil residue burns off.



Fig. 4

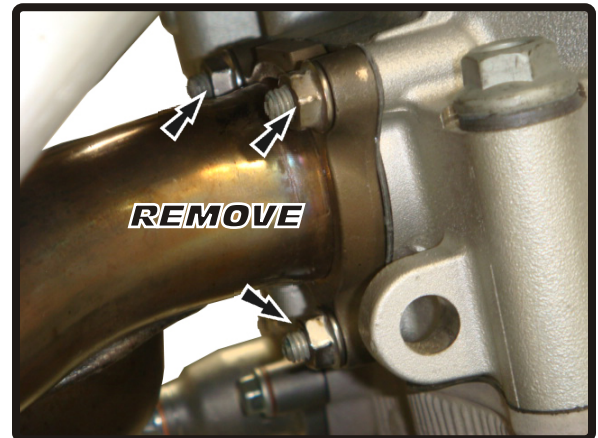
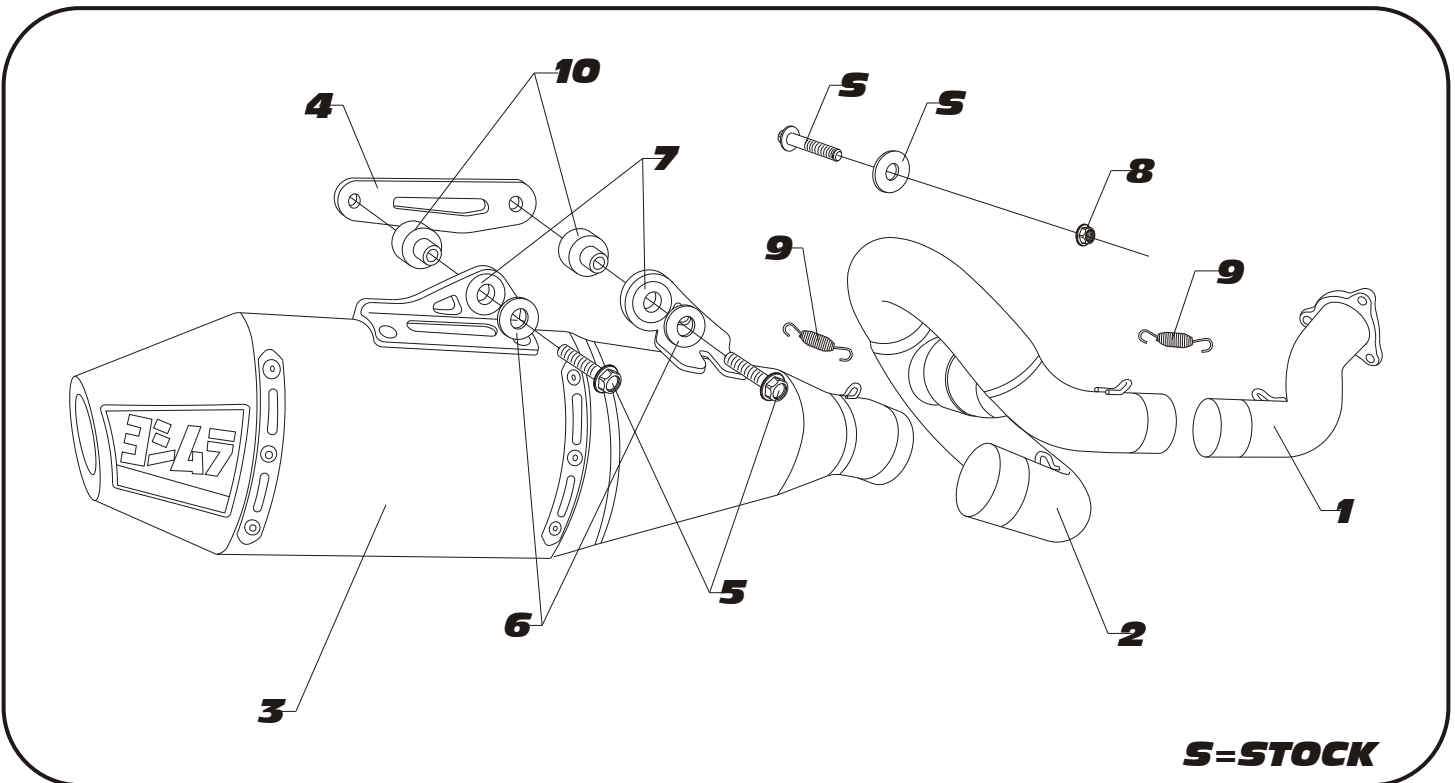


Fig. 5



Fig. 6

#234800D321



S=STOCK

Parts Diagram

NO.	DESCRIPTION	QTY	PART #
1	Yoshimura Stainless Steel Header	1	2348-101
2	Yoshimura Stainless Steel Midpipe	1	2348-140
3	Yoshimura RS4 Muffler Assembly Aluminum Sleeve	1	234800D321-RMA
4	Muffler Mount Bracket	1	2348-BRKT
5	8mm X 45mm Flanged Hex Head Bolt	2	M8X45H
6	8mm Flat Washer	2	8MMWASHERL
7	Rubber Mount Grommet	2	Z1022
8	8mm Flange Nut	1	8MMNUT
9	Exhaust Spring, Small	2	RACE-SPX-1
10	Aluminum Spacer Insert	2	ALS-010
**	Rubber Bumper Grommet	1	GRMT
**	Header Gasket	1	33D-14613-00-00
**	AMA 94dB Sound Insert (Installed)	1	INS-14-K
**	2m-MAX Sound Insert	1	INS-2M28-K
**	Spring Puller Tool	1	ST-200
**	Offroad Endcap Plug	1	347PLUG
**	Yoshimura Vinyl Sticker	1	17029
OPTIONAL REPLACEMENT PARTS			
Spark Arrestor Kit		SA-04-K	
Re-pack Kit		REPACK-RS4-PK11	

Fuel Injection Mapping:

For best results and to extract the most performance out of the Yoshimura system fuel injection mapping is recommended for closed course competition use only.

Yoshimura R&D offers the PIM2 Fuel Injection controller kit with optional DATA Box. Please contact your dealer or Yoshimura R&D for details.



YOSHIMURA

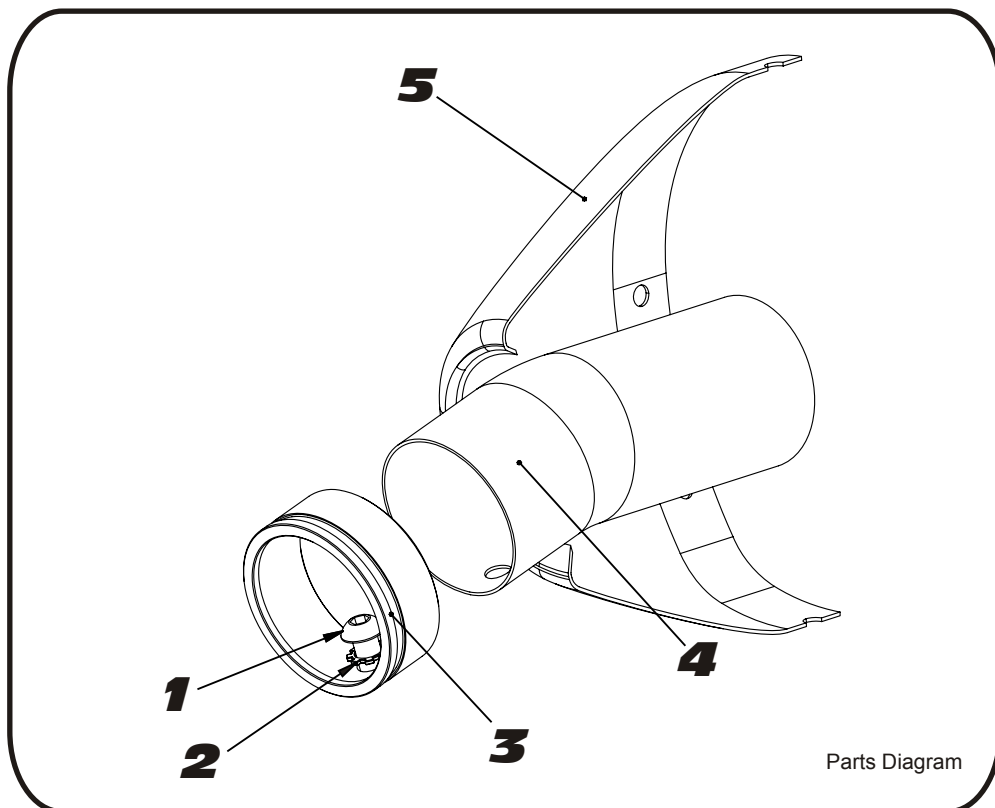
RESEARCH & DEVELOPMENT OF AMERICA, INC.

5420 DANIELS STREET SUITE A, CHINO, CA 91710 · (800)634-9166 · (909)628-4722 · FACSIMILE (909)591-2198

www.yoshimura-rd.com

INS-14-K

YOSHIMURA RS4 LOW VOLUME INSERT KIT



NO.	DESCRIPTION	QTY	PART #
1	6mm X 12mm Button Head Cap Screw	1	M6X12BHS
2	6mm Lock Washer	1	6MMLCKWSHR-TH
3	RS4 Spark Arrestor Ring 1.500"	1	RS4-RING-1500
4	AMA 94dB Sound Insert	1	INS-U
5	Yoshimura Exhaust	**	**

- 1 Using a 4mm Allen key, remove the bolt that secures the aluminum ring and sound insert to the muffler (see Parts Diagram for location).
- 2 Remove the sound insert from the muffler.
- 3 Inspect the sound insert for cracks or damage and replace if necessary.
- 4 Re-install sound insert and aluminum ring. Torque the sound insert securing bolt to 1.0 kg-m (7.3 lb-ft).
NOTE: It is recommended that a low strength "Loc-tite" is used on the sound insert securing bolt.