



YOSHIMURA

RESEARCH&DEVELOPMENT OF AMERICA, INC.

5420 DANIELS STREET STE A, CHINO CA 91710 · (800)634-9166 · (909)628-4722 · FACSIMILE (909)591-2198

WWW.YOSHIMURA-RD.COM

OFF-ROAD PERFORMANCE EXHAUST SYSTEM

HONDA
2009-2010
CRF450R

225702D320

STAINLESS STEEL SLIP ON WITH RS4 ALUMINUM SLEEVE



THIS PRODUCT IS DESIGNED FOR USE IN CLOSED COURSE RACING AND IS NOT INTENDED FOR ANY OTHER USE.



CAUTION: The muffler packing on this system **MUST** be replaced every 6-8 hours of use, or after each moto. Failure to follow recommended muffler re-packing interval can cause muffler damage and may void the warranty.



NOTE: IN THE STATE OF CALIFORNIA, IT IS ILLEGAL TO MODIFY THE EMISSION CONTROL SYSTEM, WHICH INCLUDES THE CARBURETORS OF ANY VEHICLE.

Caution: Exhaust system can be extremely hot. Let motorcycle cool down before beginning installation. Always wear hand and eye protection and take precautionary measures to avoid injury.

Note: Read through all instructions before beginning installation.

Tools Needed:

Metric Socket Set
5mm Allen Key
Ratchet Wrench and Extension
Torque Wrench
Spring Puller Tool

Installation Steps:

1. Stock exhaust removal.

- Remove right side panel. (Fig. 1)
- Loosen the muffler clamp on the tailpipe. Push clamp forward off tailpipe so it rests on the header.
- Remove the 2 bolts that hold the muffler assembly to subframe. (See Fig. 2)
- Remove muffler.
- Remove muffler clamp.
- Loosen header flange nuts (Fig. 3).
- Remove stock exhaust gasket. (Note: Exhaust gasket will not be used with Yoshimura system)

2. Yoshimura Slip-on installation.

- Insert supplied Yoshimura tailpipe clamp onto Yoshimura tailpipe.
- Carefully install Yoshimura muffler assembly onto stock header. (Note: Make sure that tailpipe is seated against the stopper on the header.)
- Bolt the tailpipe to front subframe mount using the stock bolt (Fig. 4). Get threads started by hand. Once bolt is started check that the muffler mounting bracket hole lines up with the muffler mounting hole on the subframe. If it does not the front tailpipe mount is designed to allow some vertical movement. (Note: If muffler does not want to move, thread the front bolt in more and lightly tap with soft faced mallet. This should free up the nut and allow the vertical adjustment needed to line up rear muffler mounting bolt hole.)
- Install muffler mounting bolt. Do not torque at this time.



Fig. 1



Fig. 2



Fig. 3

- Torque header nuts to 15 lb-ft (2.0 kg-m).
- Torque front tailpipe mounting bolt to 10 lb-ft (1.4 kg-m).
- Torque muffler mounting bolt to 18 lb-ft (2.5 kg-m).
- Torque tailpipe clamp bolt to 8 lb-ft (1.1 kg-m).

Note: Make sure tailpipe clamp is seated against the stopper on stock header.

3. Reinstall stock plastics using the reverse steps of removal.
4. Before starting motorcycle, check for proper clearance between new exhaust system and rear suspension (i.e. tire, swing-arm, brake, rear shock, engine etc). If any problem is found, please carefully follow through the installation steps again. If problem still persists, please call Yoshimura Tech Department at (800) 634-9166 / in CA (909) 628-4722.

It is recommended that the muffler and tailpipe be wiped down with rubbing alcohol to remove oil and fingerprints. This will help prevent tarnishing of the finish after the exhaust is heated up.

NOTE: After starting motorcycle, it is normal for new exhaust system and muffler to emit smoke until oil residue burns off.



Fig. 4

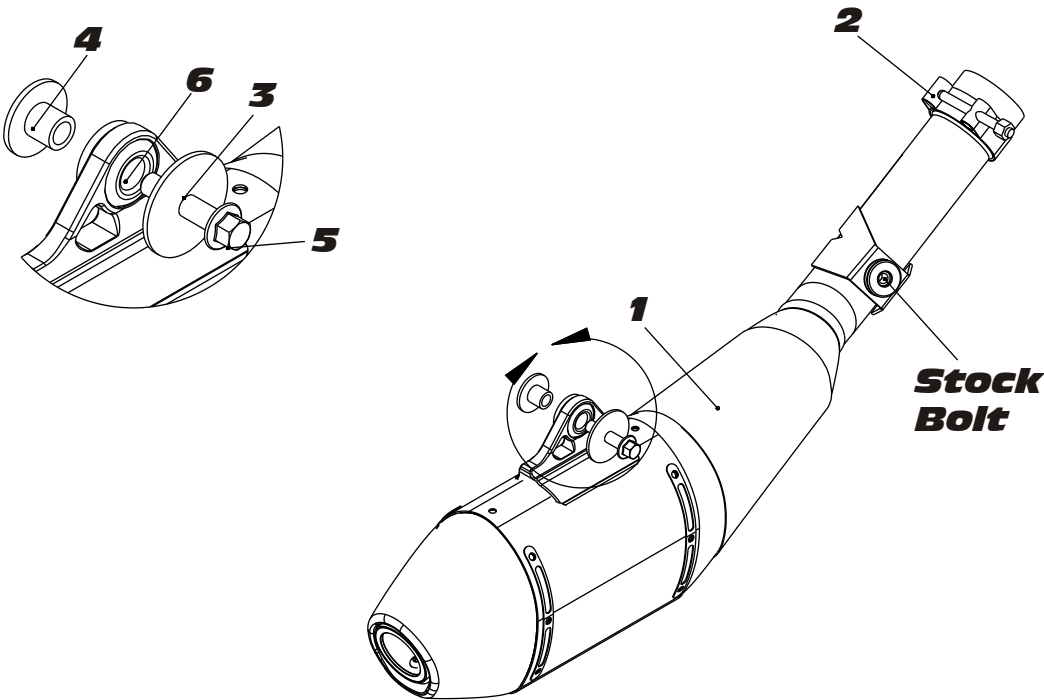
Fuel Injection Mapping:

For best results and to extract the most performance out of the Yoshimura system fuel injection mapping is recommended for closed course competition use only.

-It is recommended that idle be raised from 1800 rpm to 2000 rpm to prevent stalling.

Note: *It is illegal to modify the fuel injection system of any vehicle in the state of California.*

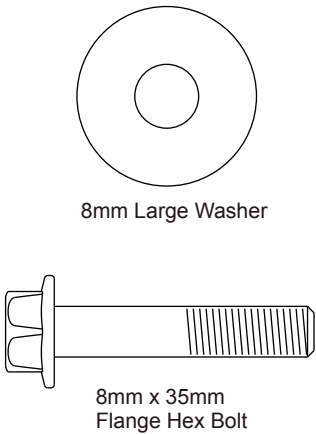
#225702D320



Parts Diagram

NO.	DESCRIPTION	QTY	PART #
1	Yoshimura Muffler Assembly	1	225702D320-RMA
2	Barrel Band Clamp	1	27-62MSH
3	8mm Washer Large	1	8MMWASHERL
4	Aluminum Spacer	1	ALS-003
5	8mm X 35mm Flanged Hex Head Bolt	1	M8X35H
6	Aluminum Bracket Rubber Grommet	1	Z1022
**	AMA 94dB Sound Insert (Installed)	1	INS-14-K
**	Offroad Endcap Plug	1	347PLUG
**	Spring Puller Tool	1	ST-200
**	Yoshimura Vinyl Sticker	1	17029
OPTIONAL REPLACEMENT PARTS			
Spark Arrestor		SA-04-K	
Re-pack Kit		REPACK-RS4-PK10	

Nuts and Bolts Guide (Actual Size):





YOSHIMURA

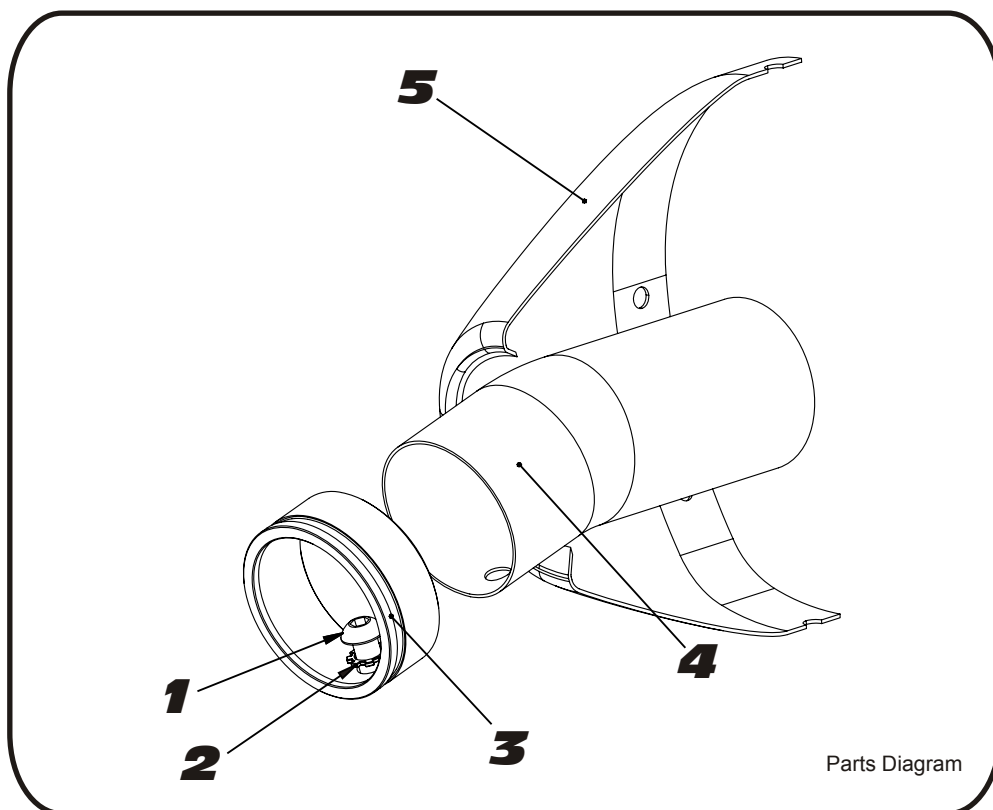
RESEARCH&DEVELOPMENT OF AMERICA, INC.

5420 DANIELS STREET SUITE A, CHINO, CA 91710 · (800)634-9166 · (909)628-4722 · FACSIMILE (909)591-2198

www.yoshimura-rd.com

INS-14-K

YOSHIMURA RS4 LOW VOLUME INSERT KIT



NO.	DESCRIPTION	QTY	PART #
1	6mm X 12mm Button Head Cap Screw	1	M6X12BHS
2	6mm Lock Washer	1	6MMLCKWSHR-TH
3	RS4 Spark Arrestor Ring 1.500"	1	RS4-RING-1500
4	AMA 94dB Sound Insert	1	INS-U
5	Yoshimura Exhaust	**	**

- 1 Using a 4mm Allen key, remove the bolt that secures the aluminum ring and sound insert to the muffler (see Parts Diagram for location).
- 2 Remove the sound insert from the muffler.
- 3 Inspect the sound insert for cracks or damage and replace if necessary.
- 4 Re-install sound insert and aluminum ring. Torque the sound insert securing bolt to 1.0 kg-m (7.3 lb-ft).
NOTE: It is recommended that a low strength "Loc-tite" is used on the sound insert securing bolt.