



# YOSHIMURA

RESEARCH & DEVELOPMENT OF AMERICA, INC.

5420 DANIELS STREET STE A, CHINO CA 91710 · (800)634-9166 · (909)628-4722 · FACSIMILE (909)591-2198

WWW.YOSHIMURA-RD.COM

## OFF-ROAD PERFORMANCE EXHAUST SYSTEM

**2008-2014**  
**Suzuki**  
**RMZ-450**

**219202D320**

STAINLESS STEEL SLIP-ON RS4 WITH ALUMINUM SLEEVE



THIS PRODUCT IS DESIGNED FOR USE IN CLOSED COURSE RACING AND IS NOT INTENDED FOR ANY OTHER USE.



CAUTION: The muffler packing on this system **MUST** be replaced every 6-8 hours of use, or after each moto. Failure to follow recommended muffler re-packing interval can cause muffler damage and may void the warranty.



NOTE: IN THE STATE OF CALIFORNIA, IT IS ILLEGAL TO MODIFY THE EMISSION CONTROL SYSTEM, WHICH INCLUDES THE CARBURETORS OF ANY VEHICLE.

**Caution:** Exhaust system may be extremely hot. Let motorcycle cool down before beginning installation.

**Note:** Read through all instructions before beginning installation.

## Tools Needed:

Metric Socket Set  
Ratchet Wrench and Extension  
Torque Wrench  
Spring Puller Tool

## Installation Steps:

### 1 Stock Exhaust Removal

- a. Remove right rear number plate (see Fig. 1 for fastener locations).
- b. Loosen stock muffler clamp.
- c. Remove stock muffler (see Fig. 2 for fastener locations).

### 2 Install Yoshimura Exhaust

- a. Slide supplied tailpipe clamp over Yoshimura tailpipe.
- b. Install supplied rubber grommet into aluminum muffler mounting bracket. Install aluminum insert into rubber grommet (make sure shoulder of aluminum insert faces toward the frame, see Fig. 4).
- c. Install Yoshimura tailpipe and muffler onto stock header.
- d. Install supplied muffler mount bolt and supplied washer. Install stock chassis mount bolt. Leave loose.
- e. Check exhaust for proper position and clearance and adjust if necessary.



Fig. 1

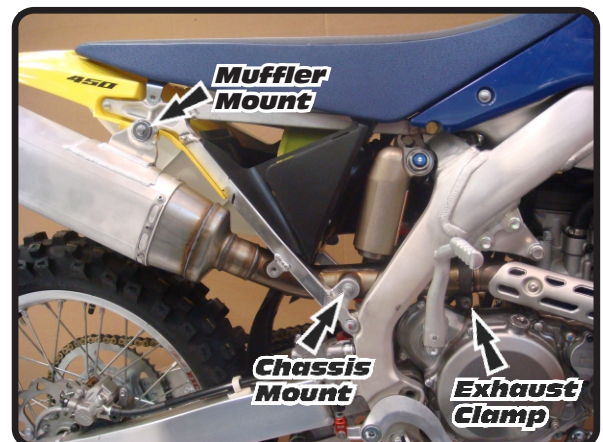


Fig. 2

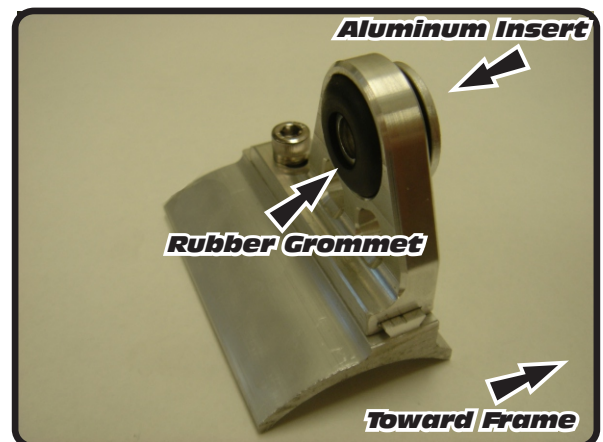
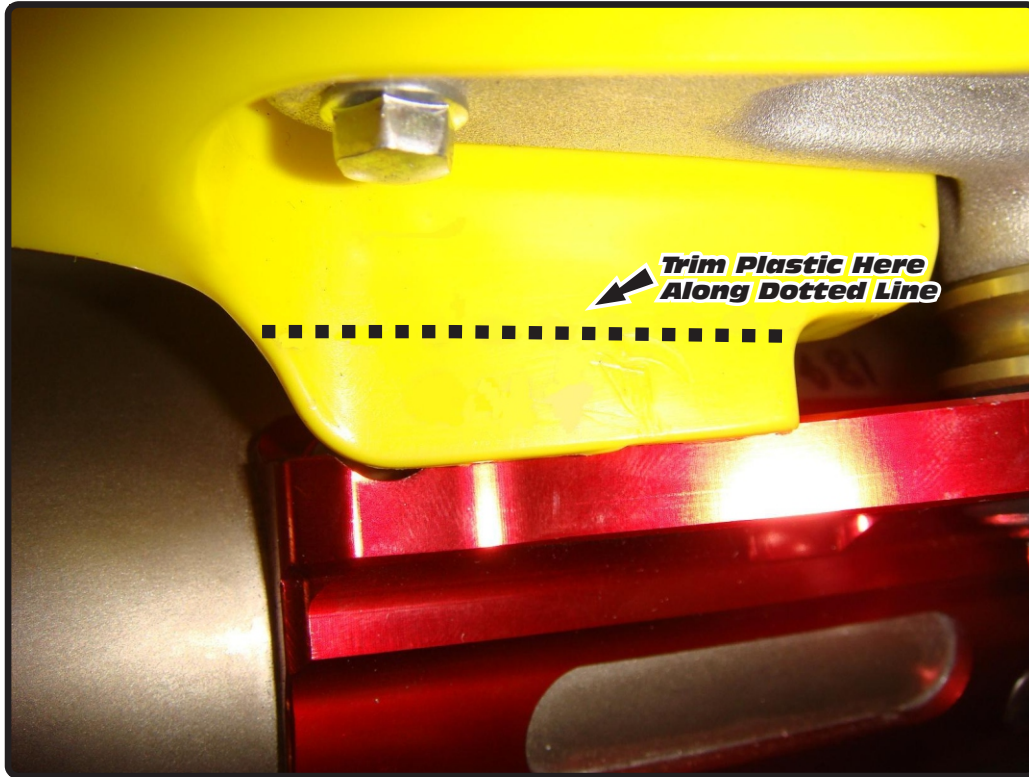


Fig. 4

**Fig. 5**

f. Torque chassis mount bolt and muffler mount bolt to 2.5 kg-m (18 lb-ft).

g. Torque muffler clamp to 2.5 kg-m (18 lb-ft).

h. It is recommended that the muffler and tailpipe be wiped down with rubbing alcohol to remove oil and fingerprints. This will help prevent tarnishing of the finish after the exhaust is heated up.

i. Trim the tail plastic as shown in figure 5. The dotted line in figure 5 shows where the plastic must be cut.

**NOTE:** Your Yoshimura exhaust system has been designed with weight centralization in mind. Trimming of the number plate is required in order to move the muffler as far forward as possible.

j. Apply the adhesive foil heatshield to the inside of the number plate as shown in figure 6. The adhesive foil heatshield will prevent the numberplate from discoloring and / or melting from the heat coming from the tailpipe and muffler.

### 3 Reinstall

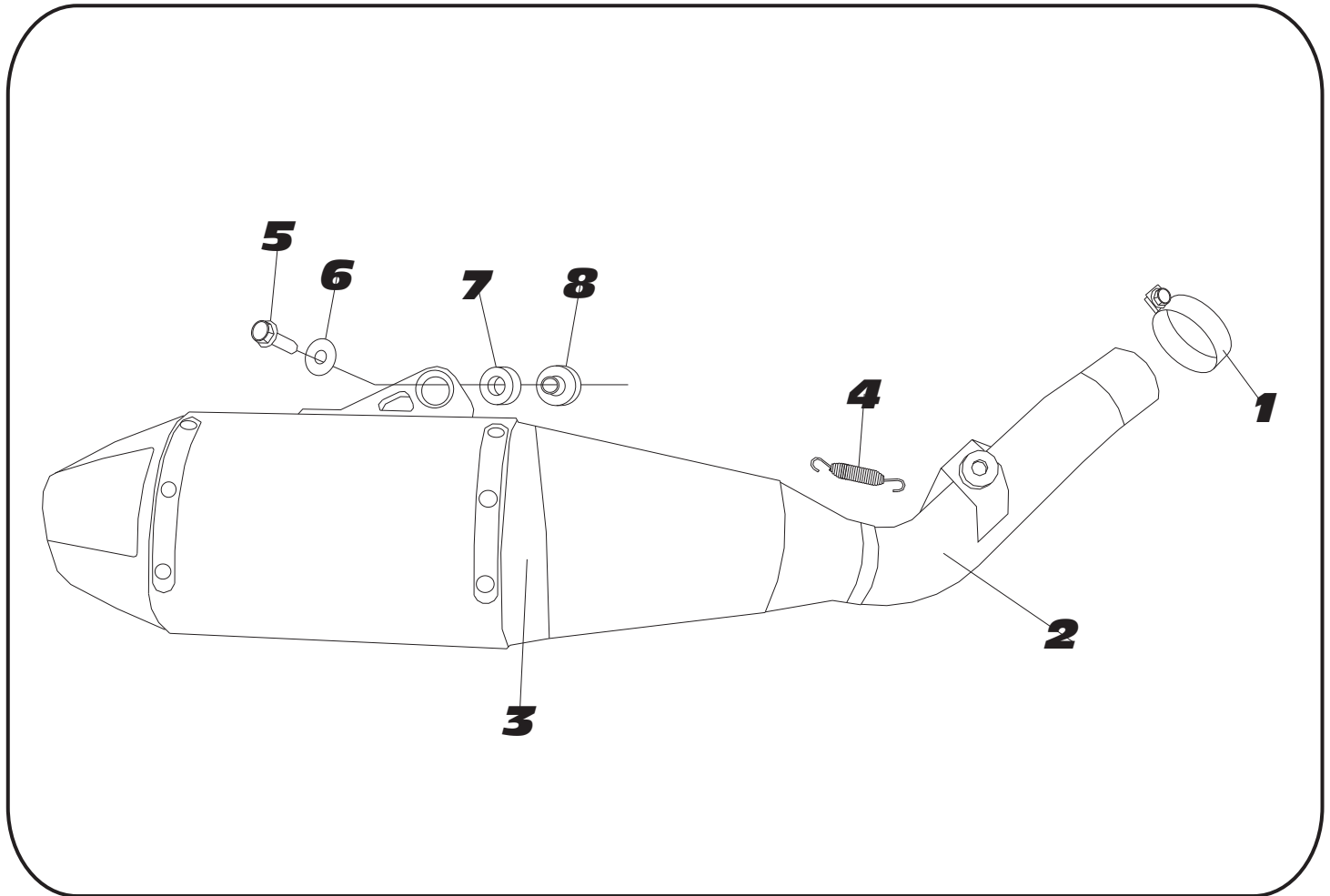
a. Reinstall number plate.

Before starting motorcycle, check for proper clearance between new exhaust system and rear suspension (i.e. tire, swingarm, brake, rear shock, etc). If any problem is found, please carefully follow through the installation steps again. If problem still persists, please call Yoshimura tech department at (800) 634-9166 / in CA (909) 628-4722.

**NOTE:** After starting motorcycle, it is normal for new exhaust system and muffler to emit smoke until oil residue burns off.

**Fig. 6**

**#219202D320**



Parts Diagram

<b>NO.</b>	<b>DESCRIPTION</b>	<b>QTY</b>	<b>PART #</b>
1	Stainless Steel Exhaust Clamp	1	22059
2	Yoshimura Tailpipe	1	2192-152
3	Yoshimura Race Muffler with Aluminum Sleeve	1	219202D320-RMA
4	Short Exhaust Spring	1	RACE-SPX-1
5	8mm x 40mm Flange Head Bolt	1	M8X40H
6	8mm Flat Washer, Large	1	8MMWASHERL
7	Muffler Mount Rubber Grommet	1	Z1022
8	Aluminum Insert	1	ALS-010
**	AMA 94dB Sound Insert (Installed)	1	INS-14-K
**	2m-MAX Sound Insert	1	INS-2M28-K
**	Adhesive Foil Heatshield	1	1200-00-01
**	Spring Puller Tool	1	ST-200
**	Yoshimura Vinyl Sticker	1	17029
**	Muffler Wash Plug	1	347PLUG
<b>OPTIONAL REPLACEMENT PARTS</b>			
	Spark Arrestor		SA-04-K
	Re-pack Kit		REPACK-RS4-PK11



# YOSHIMURA

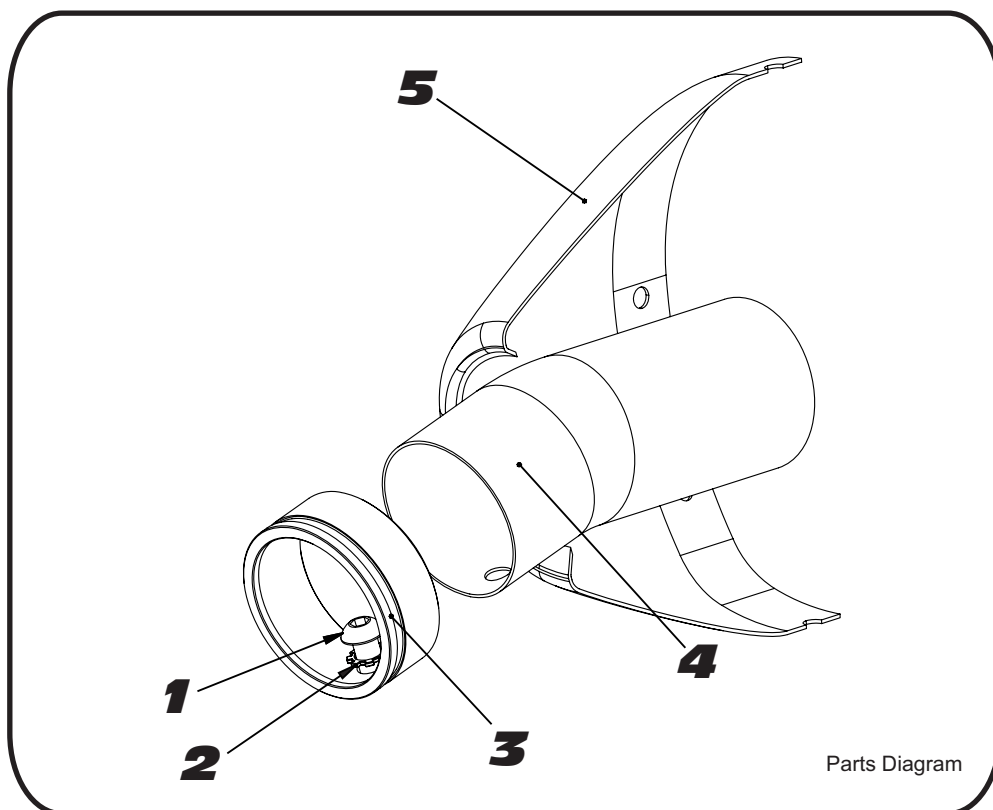
RESEARCH & DEVELOPMENT OF AMERICA, INC.

5420 DANIELS STREET SUITE A, CHINO, CA 91710 · (800)634-9166 · (909)628-4722 · FACSIMILE (909)591-2198

[www.yoshimura-rd.com](http://www.yoshimura-rd.com)

**INS-14-K**

**YOSHIMURA RS4 LOW VOLUME INSERT KIT**



NO.	DESCRIPTION	QTY	PART #
1	6mm X 12mm Button Head Cap Screw	1	M6X12BHS
2	6mm Lock Washer	1	6MMLCKWSHR-TH
3	RS4 Spark Arrestor Ring 1.500"	1	RS4-RING-1500
4	AMA 94dB Sound Insert	1	INS-U
5	Yoshimura Exhaust	**	**

- 1 Using a 4mm Allen key, remove the bolt that secures the aluminum ring and sound insert to the muffler (see Parts Diagram for location).
- 2 Remove the sound insert from the muffler.
- 3 Inspect the sound insert for cracks or damage and replace if necessary.
- 4 Re-install sound insert and aluminum ring. Torque the sound insert securing bolt to 1.0 kg-m (7.3 lb-ft).  
**NOTE:** It is recommended that a low strength "Loc-tite" is used on the sound insert securing bolt.