



PERFORMANCE EXHAUST SYSTEM

APPLICATION

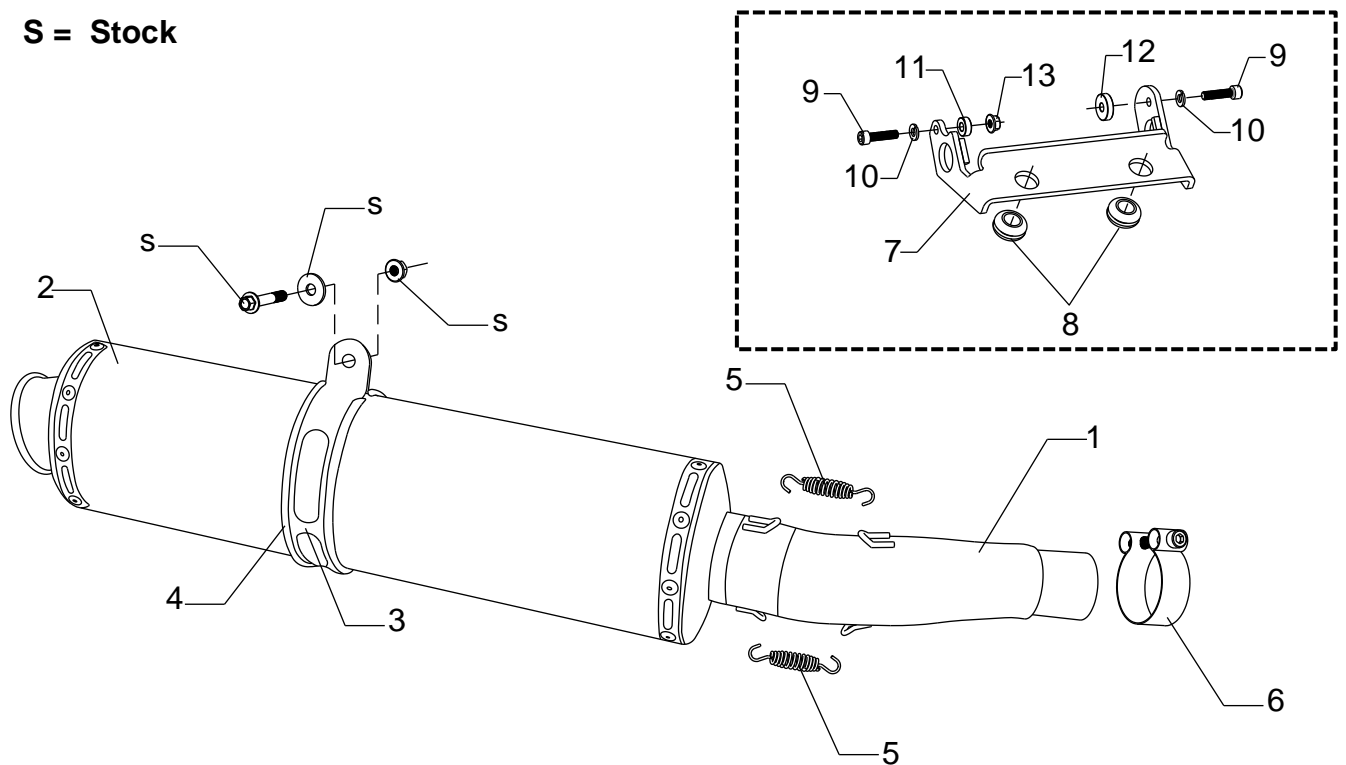
YEAR	MODEL
2013	Honda CB1100

PRODUCT

1211025200	RS3 Stainless Steel Slip-On Exhaust System with Carbon Fiber Sleeve
1211025500	RS3 Stainless Steel Slip-On Exhaust System with Stainless Steel Sleeve

!	This product is designed for use in closed course racing and is not intended for highway use. In the state of California, it is illegal to modify the emission control system, which includes the fuel injection of any vehicle.
!	You must know how to remove and replace your stock exhaust in order to install this product otherwise have it installed by a professional mechanic. Keep all stock parts from your existing system as some components may be necessary to install your new Yoshimura exhaust depending on the application.
!	Read through all instructions before beginning installation. Exhaust system can be extremely hot. Let motorcycle cool down before beginning installation. Always wear hand and eye protection and take precautionary measures to avoid injury.

S = Stock



No.	Part #	Description	Qty
1	12110-435	Yoshimura Tailpipe	1
2	CRRS3186W SRRS3186W	Yoshimura Muffler Assembly Carbon Fiber Sleeve Stainless Steel Sleeve	1
3	COS450S8BS COS450S8BSX	Muffler Clamp For Carbon Fiber Sleeve For Stainless Steel Sleeve	
4	HT SHLDTRS	Muffler Clamp Heatshield	1
5	RACE-SPX-1	Short Spring	2
6	27-58M	Exhaust Clamp	1
7	12110-SSTP	Center Stand Bracket	1
8	Z1022	Rubber Grommet	2
9	M6X25	6mm x 25mm Socket Head Cap Screw	2
10	6X10LW	6mm Split Lock Washer	2
11	6X14X5SPCR	Small Aluminum Spacer	1
12	6X20X5SPCR	Large Aluminum Spacer	1
13	6MMNUT	6mm Nut	1
**	RS3-INS-K	RS3 Low Volume Insert	1
**	ST-200	Spring Puller Tool	1
**	17029	Yoshimura Sticker Sheet	1

-TOOLS REQUIRED-

Metric Socket Set • Combination Wrench Set • Torque Wrench • Metric Allen Wrench Set

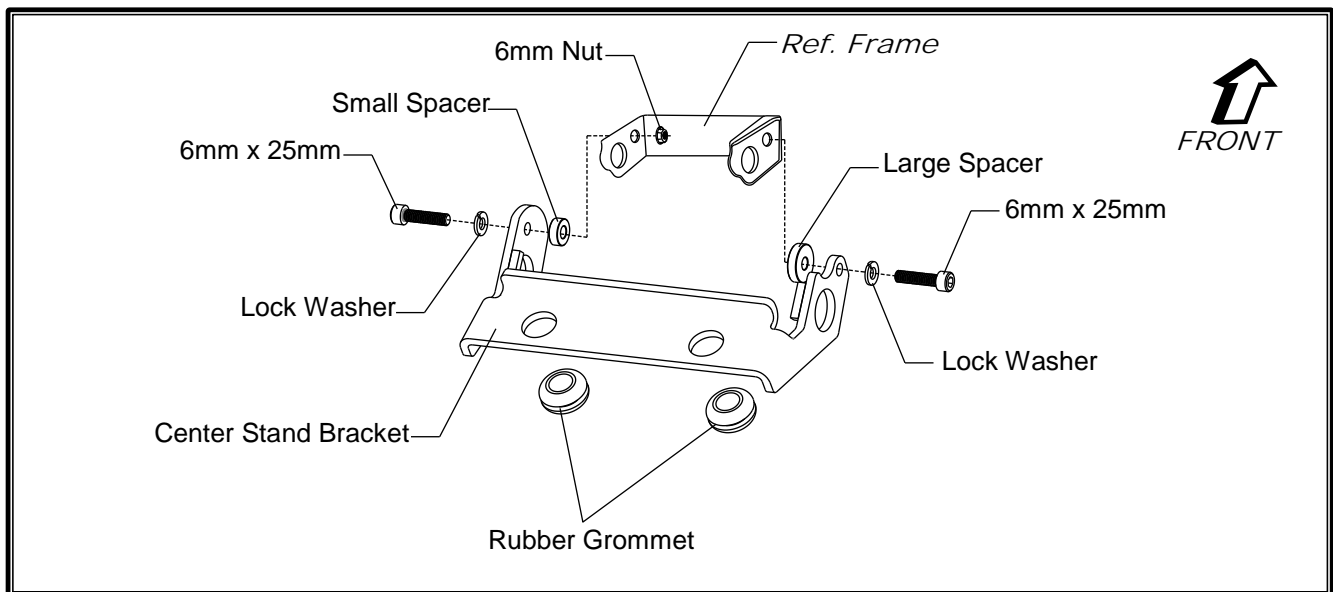
-REMOVAL-

1. Place bike on center stand and remove center stand shaft bolt. Do not remove center stand shaft.
2. Remove the muffler heatshield bolt and remove the stock heatshield by sliding toward the front of the bike.
3. Loosen stock exhaust clamp at header and muffler connection.
4. While securely supporting the stock muffler assembly remove the muffler mount bolt.
5. Slide the stock muffler off of header by sliding toward the rear of the bike.

Note: The stock exhaust gasket will not be used with the Yoshimura Slip-On Exhaust System.

-INSTALLATION-

1. Install rubber grommets onto Yoshimura center stand bracket.
2. Install Yoshimura center stand bracket to stock frame using the hardware provided in the kit. See diagram below for proper orientation and order of hardware.

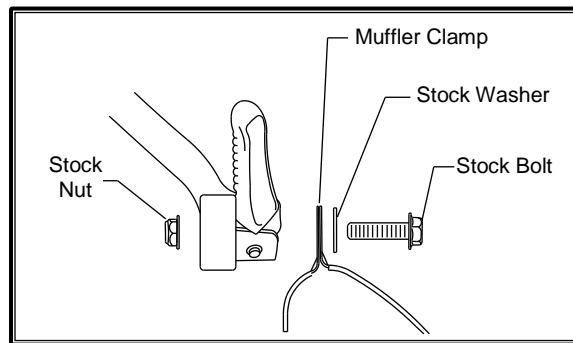


3. Install provided exhaust clamp over Yoshimura tailpipe inlet.
4. Install rubber heatshield onto muffler clamp and slide over muffler.
5. Install Yoshimura muffler assembly by sliding tailpipe over stock header outlet.
6. Align muffler clamp to muffler mount and secure using the stock bolt, washer, and nut.

Torque to factory specification.

Note¹: The muffler clamp mounts to the outside of the muffler mount. See diagram below.

Note²: It may be necessary to remove the exhaust springs to rotate the tailpipe and/or muffler independently to achieve desired alignment. Re-install exhaust springs after desired alignment is achieved.



7. ***Torque exhaust clamp to 13.5 Nm. (1.3 kg-m, 10 lb-ft)***
8. ***Before starting motorcycle, check for proper clearance between new exhaust system and rear suspension (i.e. tire, swing-arm, brake, rear shock, engine, and etc.) If any problem is found, please carefully follow through the installation steps again. If problem still persists, please call Yoshimura Tech Department at (800) 634-9166 / in CA (909) 628-4722.***
9. ***It is recommended that the muffler and tailpipe be wiped down with rubbing alcohol to remove oil and fingerprints. This will help prevent tarnishing of the finish after the exhaust is heated up.***
NOTE: After starting motorcycle, it is normal for new exhaust system and muffler to emit smoke until oil residue burns off.