



# YOSHIMURA

RESEARCH&DEVELOPMENT OF AMERICA, INC.

5420 DANIELS STREET STE A, CHINO CA., 91710 · (800)634-9166 · (909)628-4722 · FACSIMILE (909)591-2198

**[www.yoshimura-rd.com](http://www.yoshimura-rd.com)**

## **YOSHIMURA PERFORMANCE EXHAUST SYSTEM**

**SUZUKI**  
**2007-2012**  
**BURGMAN 400**

<b>1195002</b>	STAINLESS STEEL SLIP-ON WITH CARBON FIBER R77
<b>1195006</b>	STAINLESS STEEL SLIP-ON WITH STAINLESS STEEL R77 AND SS ENDCAP



**THIS PRODUCT IS DESIGNED FOR USE IN CLOSED COURSE  
RACING AND IS NOT INTENDED FOR HIGHWAY USE.**



NOTE: IN THE STATE OF CALIFORNIA, IT IS ILLEGAL TO MODIFY THE EMISSION CONTROL SYSTEM, WHICH INCLUDES THE FUEL INJECTION OF ANY VEHICLE.

**Caution:** Exhaust system can be extremely hot. Let motorcycle cool down before beginning installation. Always wear hand and eye protection and take precautionary measures to avoid injury.

**Note:** Read through all instructions before beginning installation.

## Tools Needed:

Metric Socket Set  
Ratchet and Extension  
Metric Combination Wrench Set  
Metric Allen Wrench Set  
Torque Wrench

## Installation Steps:

- 1 Remove right side footrest pads.
- 2 Remove bolts and push-type rivets to remove underbelly cowl. (Fig. 2)
- 3 Remove O2 sensor from stock header.
- 4 Remove header bolts.
- 5 Loosen header mounting bolt.
- 6 Remove muffler mounting bolt.
- 7 Remove tailpipe mounting bolt and remove stock exhaust.
- 8 Remove exhaust gaskets and replace with new.
- 9 Using stock hardware bolt Yoshimura to the stock muffler and tailpipe mounting points. Leave bolts loose to ease fitment of manifolds into exhaust ports.
- 10 Bolt Yoshimura header into the exhaust ports using stock bolts.
- 11 Torque header bolts to 14 lb-ft (18.9 Nm)
- 12 Torque tailpipe mount bolt to 18 lb-ft (24.3 Nm)
- 13 Torque muffler mounting bolt to 18 lb-ft (24.3 Nm)
- 14 Reinstall O2 sensor.
- 15 Reinstall underbelly cowl and right side footrest pads.
- 16 Check for proper clearance between new exhaust system and motorcycle. (i.e. Swing-arm, body work, etc.) If any problem is found, please carefully follow through the installation steps again. If problem still persists, please call Yoshimura technical department at (800)634-9166 / in CA (909)628-4722.

**Note:** After starting motorcycle, it is normal for new exhaust system and muffler to smoke until oil residue burns off.



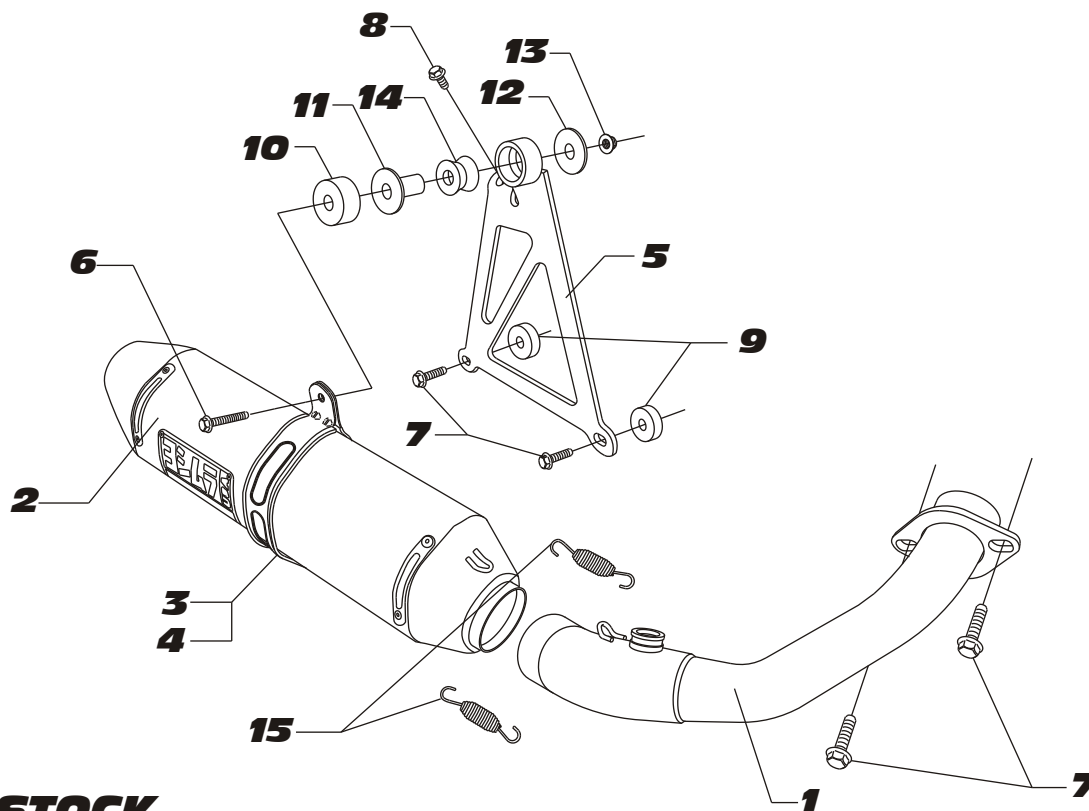
Fig. 1



Fig. 2



Fig. 3

**#119500(2,6)**

**S=STOCK**

Parts Diagram

NO.	DESCRIPTION	QTY	PART #
1	Yoshimura Header	1	1195-101
2	Yoshimura R77 Muffler with Carbon Fiber R77 with Stainless Steel R77 with SS Tip	1	1195002-RMA 1195006-RMA
3	R77 Muffler Clamp for Carbon Fiber for Stainless and Titanium	1	1121-MPCR 1121-MPCR-X
4	Heatshield for Muffler Clamp	1	HT SHLDR77
5	Muffler Bracket	1	1195-BKT
6	8mm X 45mm Flanged Hex Head Bolt	1	M8X45H
7	8mm X 20mm Flanged Hex Head Bolt	4	M8X20H
8	8mm X 12mm Flanged Hex Head Bolt	1	M8X12H
9	Aluminum Spacer	2	8X7SPC
10	Aluminum Spacer	1	8X10SPCR
11	Aluminum Spacer for Muffler Bracket	1	ALS-001
12	8mm Washer	1	8MMWASHERL
13	8mm Nut	1	8MMNUT
14	Rubber Grommet	1	011257-00
15	82mm Spring Medium	2	RACE-82MM
**	Spring Puller Tool	1	ST-200
**	Low Volume Insert for CF Endcap for SS Endcap	1	INS-04-K INS-03-K
**	Yoshimura Vinyl Sticker	1	17029