



# YOSHIMURA

RESEARCH & DEVELOPMENT OF AMERICA, INC.

5420 DANIELS STREET STE A, CHINO CA, 91710 · (800)634-9166 · (909)628-4722 · FACSIMILE (909)591-2198

[www.yoshimura-rd.com](http://www.yoshimura-rd.com)

## **YOSHIMURA PERFORMANCE EXHAUST SYSTEM 2008-2009 YAMAHA RHINO 700**

**337002G550** | RS8 SLIP ON WITH STAINLESS STEEL SLEEVE



THIS PRODUCT IS DESIGNED FOR USE IN CLOSED COURSE  
RACING AND IS NOT INTENDED FOR ANY OTHER USE.



CAUTION: The muffler packing on this system should be replaced every  
1,000 miles. Failure to follow recommended muffler re-packing interval can  
cause muffler damage and may void the warranty.



NOTE: IN THE STATE OF CALIFORNIA, IT IS ILLEGAL TO MODIFY THE EMISSION CONTROL SYSTEM, WHICH INCLUDES THE CARBURETORS OF ANY VEHICLE.

**Caution:** Exhaust system can be extremely hot. Let vehicle cool down before beginning installation. Always wear hand and eye protection and take precautionary measures to avoid injury.

**Note:** Read through all instructions before beginning installation.

### Tools Needed:

Metric Socket Set  
Ratchet and Extension  
Metric wrench Set  
Torque wrench  
Drill  
1/4" and 11/16" drill bits (or step drill bit)

### Installation Steps:

1. Remove the bed as per Factory Service Manual.
  2. Remove the stock heatshield by removing the four bolts that hold it in place.
  3. Remove stock exhaust springs. (Fig. 1)
  4. Remove tailpipe U-bend, exhaust mounting bolts, and exhaust mounts.
  6. Carefully remove the muffler.
  7. Reinstall stock tailpipe U-bend.
  8. Remove bracket shown in Fig. 1.
  8. Install Yoshimura tailpipe using stock exhaust springs and gasket.
  9. Insert supplied rubber grommet into front muffler bracket. Then insert Aluminum spacer to the inside of rubber grommet. (See Fig. 4). Install Yoshimura muffler.
  10. Reinstall stock rear muffler mounting brackets and tighten bolts to 14 lb-ft (19 N-m).
- Note:** Remove stock spacer on rear muffler mount and install on opposite side of mount. (See Fig 3)
11. Install Yoshimura muffler mounting brackets A & B as shown in parts diagram and Figure 2.
  12. Install exhaust springs from the tailpipe to the muffler using supplied spring puller tool.

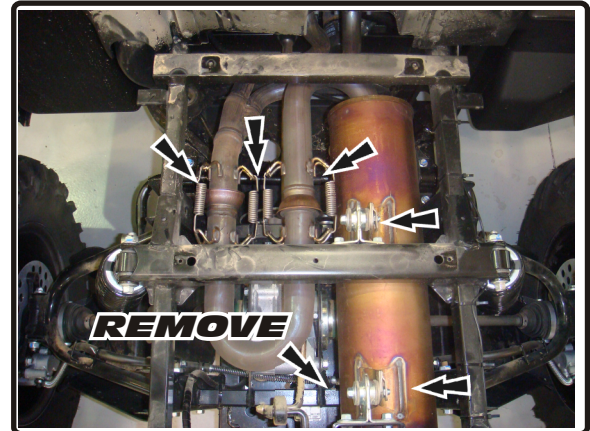


Fig 1

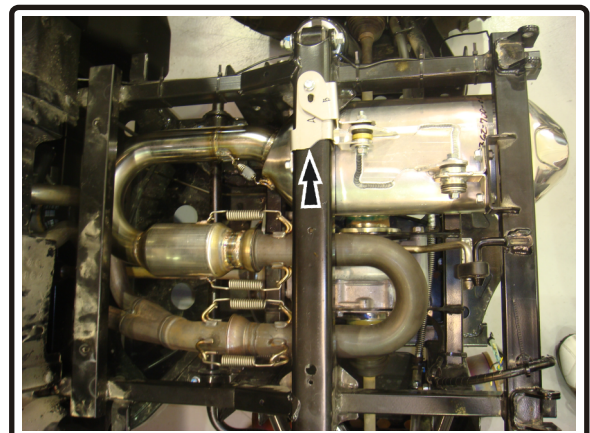


Fig 2

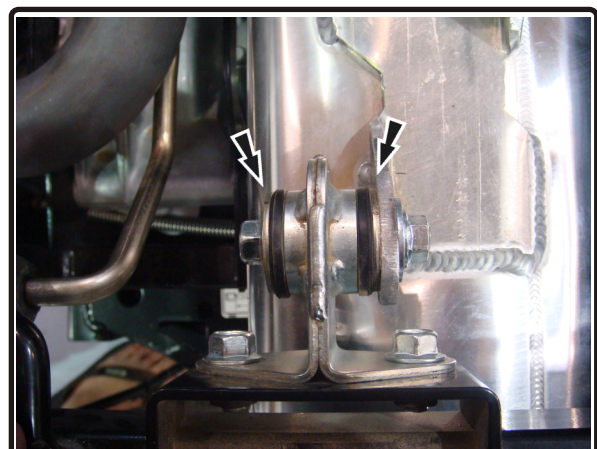


Fig 3



13. Install muffler using stock bolts and supplied hardware. Refer to parts diagram for orientation. Make sure alignment of the mufflers is correct and torque muffler mount nuts to 9.5 lb-Ft (13 N-m).

**NOTE:** It is recommended that the muffler and tailpipe be wiped down with rubbing alcohol to remove oil and fingerprints. This will help prevent tarnishing of the finish after the exhaust is heated up.

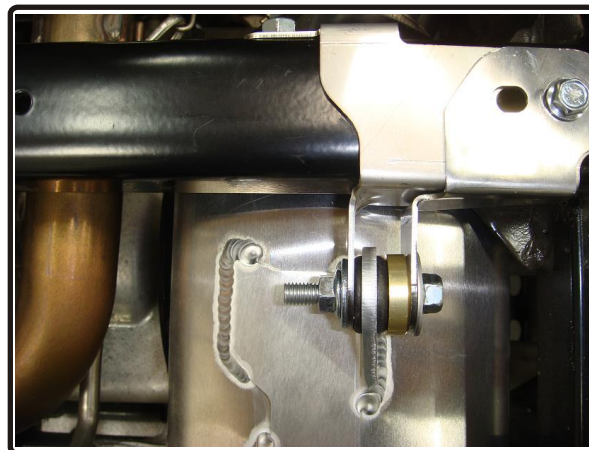
14. Drill holes in stock heatshield using the supplied template (see page 4 for drilling instructions).
15. Reinstall stock heatshield.
16. Reinstall bed using the reverse steps of removal.
17. Before starting vehicle, check for proper clearance between new exhaust system and rear suspension (i.e. tire, swing-arm, brake, rear shock etc). If any problem is found, please carefully follow through the installation steps again. If problem still persists, please call Yoshimura technical department at (800) 634-9166 / in CA (909) 628-4722 .

**\*\* NOTE:** After starting the vehicle, it is normal for a new exhaust system and muffler to emit smoke until oil residue burns off.

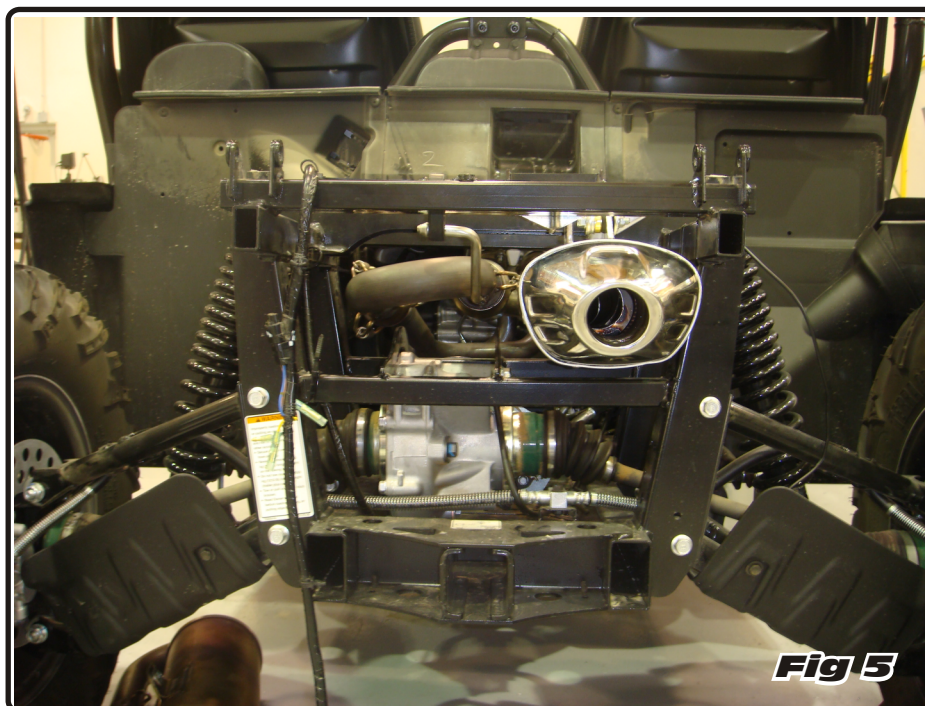
### Fuel Injection Mapping Suggestions:

For maximum performance, fuel injection mapping is recommended for competition use only.

**Note:** It is illegal to modify the fuel injection system of any vehicle in the state of California.

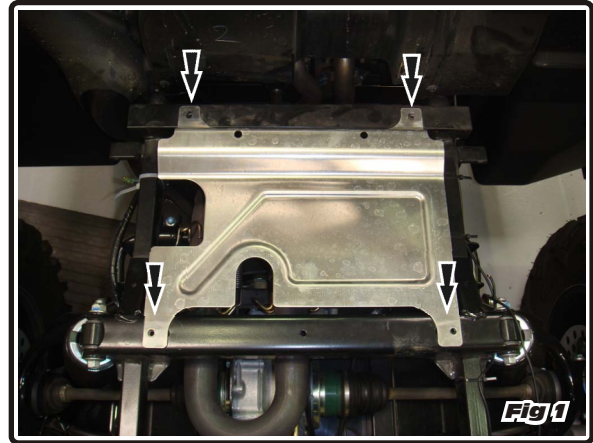


**Fig 4**



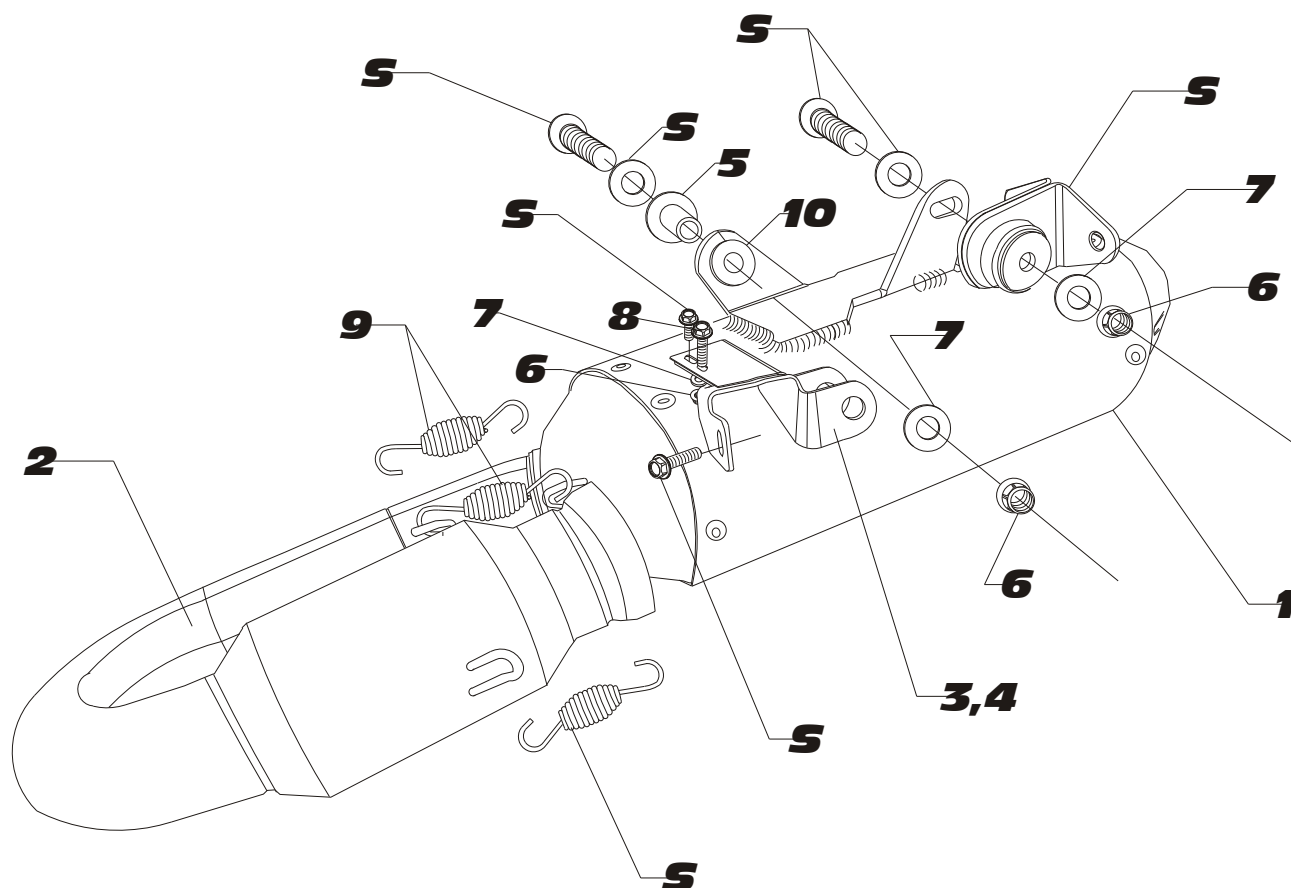
**Fig 5**

1. Cut template out using a pair of sharp scissors.
2. Lay the template out on the stock heatshield making sure that the templates up side is showing. Tape template in place.
3. Using a center punch, make a punch mark in the center of the circle.
4. Using a 1/4" drill bit drill a pilot hole first.
5. Using a 11/16" drill bit (or a step bit) finish drilling hole size to 11/16" (17.3mm).
6. After drilling make sure all bolt holes line up correctly.
7. Reinstall heatshield.





**PN: 337002G550**



**S=STOCK**

NO.	DESCRIPTION	QTY	PART #
1	Yoshimura RS8 Muffler	1	337002G550-CMA
2	Yoshimura Stainless Steel Tailpipe	1	2362-152
3	Muffler Chassis Mount A	1	2361500-BRKTA-R
4	Muffler Chassis Mount B	1	2361500-BRKTB-R
5	Aluminum Spacer	1	ALS-002
6	8mm Nut	3	8MMNUT
7	8mm Large Washer	3	8MMWASHERL
8	8mm x 25mm Bolt	1	M8X25H
9	Small Exhaust Springs	2	RACE-SPX-1
10	Rubber Grommet for Muffler Brackets	1	Z1022
**	Spring Puller Tool	1	ST-200
**	Stock Heatshield Hole Drilling Template	1	**
**	Offroad Endcap Plug	1	347PLUG
**	Yoshimura Vinyl Sticker	1	17029



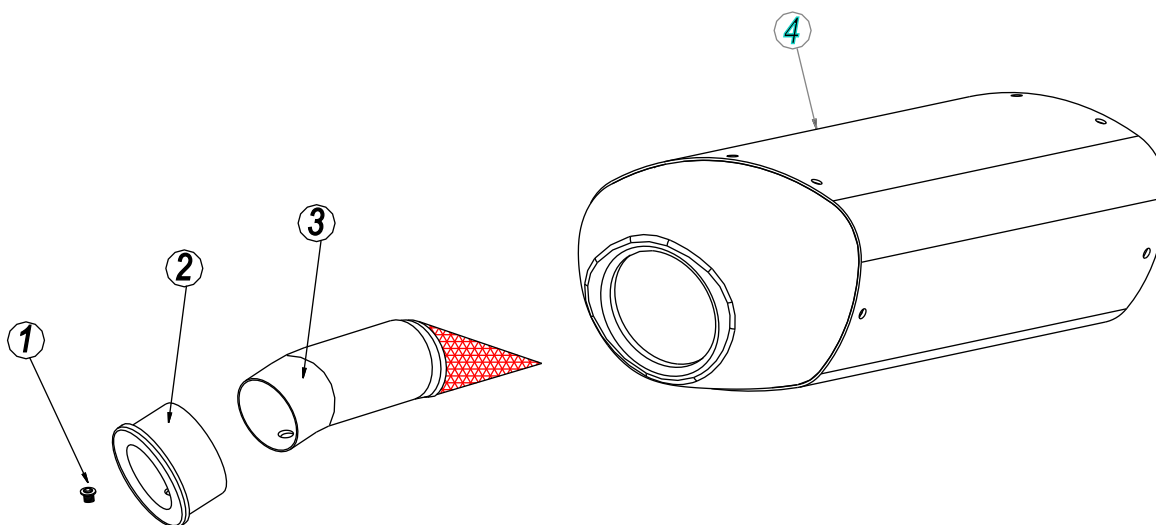
# YOSHIMURA

RESEARCH&DEVELOPMENT OF AMERICA, INC.

5420 DANIELS STREET SUITE A, CHINO, CA 91710 · (800)634-9166 · (909)628-4722 · FACSIMILE (909)591-2198

**[www.yoshimura-rd.com](http://www.yoshimura-rd.com)**

## ***Yoshimura Spark Arrester Cleaning Information***



Parts Diagram

**Caution:** *Muffler can be extremely hot. Let muffler cool down before removing spark arrester.*

**Note:** *Read through all instructions before beginning disassembly.*

### **Tools Needed:**

4mm Allen Key  
Wire Brush  
Pair of Gloves  
Safety Glasses

### **Cleaning Steps:**

- 1 Using a 4mm Allen key, remove the 6mm x 18mm Button Head Bolt located under the muffler exhaust tip. (See Parts Diagram for location)
- 2 Remove the spark arrester from the muffler.

NO.	DESCRIPTION	QTY	PART #
1	6mmX18mm Button Head Cap Screw	1	M6X12BHS
2	RS8 Spark Arrestor Ring 1.625"	1	RS8-RING-1625
3	Low Volume Insert for RS8	1	TEC-SD7
4	Yoshimura Muffler Assembly	1	**

- 3 Using a wire brush, remove carbon deposits from spark arrester screen. Inspect the screen for excessive wear or damage. If spark arrester is excessively worn or damaged, the spark arrester must be replaced. Cleaning and inspection should be performed at the same time as muffler repacking. Repacking is recommended every 1,000miles.

**CAUTION:** Gloves and Safety Glasses should be worn while cleaning spark arrester.

- 4 Re-install spark arrester and 6mm x 12mm bolt into muffler assembly. Torque bolt to 1.0 kg-m (7.3 lb-ft).

**NOTE:** It is highly recommended that a low strength "Loc-tite" is used on the bolt.

# Cut Out Template

Stock Hole

Drill New Hole

