



WWW.SMITTYBILT.COM

Installation Instructions

XRC Rocker Guards

Part # 76872, 76871, 76861, 76862

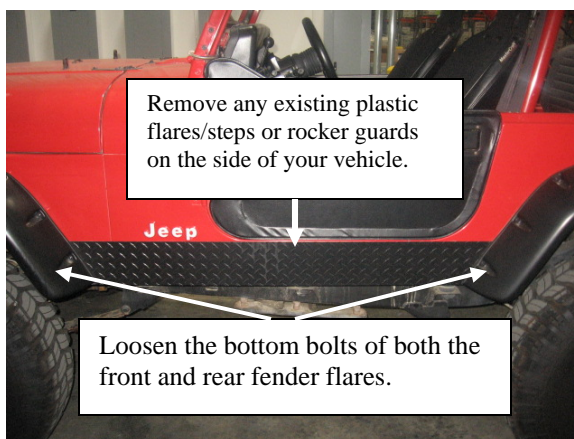
NOTE: Carefully read entire instructions thoroughly before attempting to install this part.

Parts Included	Qty
Driver Side Rocker Guard	1
Passenger Side Rocker Guard	1
3/8" Counter-sunk Bolt	10
3/8" Flat Washer	10
3/8" Lock Nut	10



Step 1: Take off and remove any existing flares or rocker guards that you may have on your vehicle. (Fig A) Make sure to clean the side of the vehicle before installing the guards.

Step 2: Loosen the lower bolts on each of the front and rear flares. (Fig A)



(Fig A)



(Fig B)

Step 3: Remove all of the body mount bolts on the passenger side (or which ever side you begin with) including the front one. **Note: Make sure vehicle is on a level surface.**

For Technical Support/Warranty Information please call 310-762-9944

Smittybilt, 400 West Artesia Blvd, Compton, CA 90220



WWW.SMITYBILT.COM

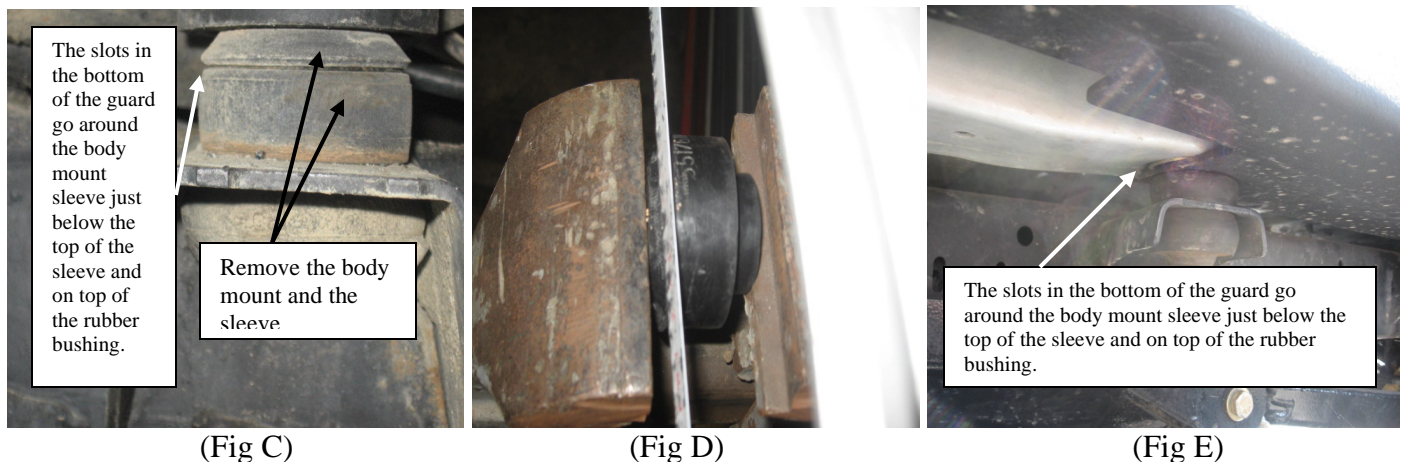
Installation Instructions

XRC Rocker Guards

Part # 76872, 76871, 76861, 76862

Step 4: Raise the body of the vehicle slightly using a floor jack. Be sure to lift near a body support to prevent any damage to your vehicle. (Fig B)

Step 5: Hold the guard up close to vehicle to identify which body mounts line up with the cut out slots on the bottom of your rocker guard. Set guard to the side and carefully remove the body mounts and sleeves that line up with the slots. (Fig C)



Step 6: Cut 3/16" off the top of each of bushings you removed using a hack saw, grinder or some other cutting tool.(Fig D)

Step 7: Insert bushing and sleeves back into previous frame locations.

Step 8: Position rocker guard up against vehicle, lining up the slots on the bottom of the guard with the body mount bushings. The slots go right under the top of the sleeve and above the rubber bushing. (Fig C, E) Slowly lower the body back down on the frame.

Step 9: Clamp the rocker guard to the body using quick clamps or something similar. Check to see if guard is level. Use a marker or scribe to mark the mounting location along the side of the vehicle. (Fig F)

Step 10: With care, remove the clamps and the rocker guard from the side of your vehicle. (You may have to lift the vehicle body with the floor jack again) Center punch all of the previously marked holes.

Step 11: **NOTE: Check to make sure there are no wires or other obstructions on the inside of the body before any drilling.** Drill out the marked holes using a 3/8" drill bit. (Fig G) After the holes are drilled clean off any burrs or debris. We recommend using some kind of touch up or clear coat to cover the exposed metal.

For Technical Support/Warranty Information please call 310-762-9944

Smittybilt, 400 West Artesia Blvd, Compton, CA 90220



WWW.SMITTYBILT.COM

Installation Instructions

XRC Rocker Guards

Part # 76872, 76871, 76861, 76862

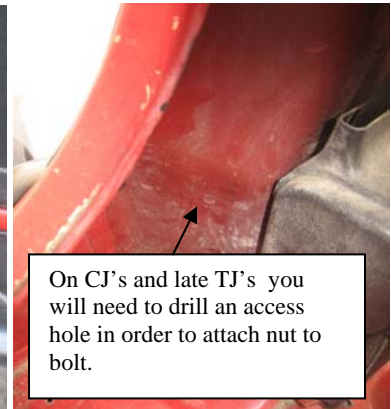
Note: On CJ's and late model TJ's an access hole will be needed to install the nut on the rear bolt on the corner guard. This can be done by using a 1" hole saw on the inside of the body near the lower seat belt mount.



(Fig F)



(Fig G)



On CJ's and late TJ's you will need to drill an access hole in order to attach nut to bolt.

(Fig H)

Step 12: Position the guard back on the vehicle. Hand start the body mount bolts and insert the counter sunk bolts through the rocker guards and attach with flat washer and lock nut on the inside of the vehicle. Once all hardware has been started go back and completely tighten each bolt including the body mount bolts. **Note:** Be sure to re-install the other body mount bolts that you removed from the side of the vehicle you are working on. Re-install fender flares if previously loosened. Installation is complete; follow same steps for the other side of your vehicle.

CARE AND MAINTENANCE

To protect your investment it is recommended to regularly wash and wax this part. Do not use any type of cleaners that contain abrasives that may damage the finish of your part.

LIMITED WARRANTY

Smittybilt (The Company) warrants to the original purchaser of this product that should the product or any part thereof, under normal use and conditions, be proven defective in material or workmanship within 5 years from the original date of purchase, such defect(s) will be repaired or replaced (At the Company's option) without charge for parts or labor.

To obtain repair or replacement within the terms of the warranty, the product is to be delivered with proof of warranty coverage (e.g. dated bill of sale, receipt), specification of defect, freight pre-paid with Returns Good Authorization Number from Smittybilt to place of purchase. Items returned to Smittybilt without a Returns Authorization Number will be refused and returned to sender at the sender's expense.

This warranty does not apply to any product or part thereof which, in the opinion of the Company, has suffered or been damaged through alteration, improper installation, mishandling, misuse, neglect accident or acts of nature. **THE EXTENT OF THE COMPANY'S LIABILITY UNDER THIS WARRANTY IS LIMITED TO THE REPAIR OR REPLACEMENT PROVIDED ABOVE AND, IN NO EVENT, SHALL THE COMPANY'S LIABILITY EXCEED THE PURCHASE PRICE PAID BY THE PURCHASER FOR THIS PRODUCT.**

This warranty is in lieu of all expressed warranties and liabilities. ANY IMPLIED WARRANTIES, INCLUDING ANY IMPLIED WARRANTY OF MERCHANTABILITY SHALL BE LIMITED TO THE DURATION OF THIS WRITTEN WARRANTY. ANY ACTION FOR BREACH OF ANY WARRANTY HEREUNDER INCLUDING ANY IMPLIED WARRANTY OF MERCHANTABILITY MUST BE BROUGHT WITHIN A PERIOD OF 90 DAYS FROM DATE OF ORIGINAL PURCHASE. IN NO CASE SHALL THE COMPANY BE LIABLE FOR ANY CONSEQUENTIAL OR INCIDENTAL DAMAGES FOR BREACH OF THIS OR ANY OTHER WARRANTY, EXPRESSED OR IMPLIED, WHATSOEVER. No person or representative is authorized to assume for the company any liability other than expressed herein in connection with the sale of this product. Some states do not allow limitations on how long an implied warranty lasts or the exclusion or limitation of incidental or consequential damage, therefore above limitations may not apply to you. This warranty gives the purchaser specific legal rights. The purchaser may have additional rights, which vary from state to state.

For Technical Support/Warranty Information please call 310-762-9944

Smittybilt, 400 West Artesia Blvd, Compton, CA 90220



WWW.SMITTYBILT.COM

Installation Instructions
XRC Rocker Guards
Part # 76872, 76871, 76861, 76862

For Technical Support/Warranty Information please call 310-762-9944

Smittybilt, 400 West Artesia Blvd, Compton, CA 90220



WWW.SMITTYBILT.COM

Installation Instructions
XRC Rocker Guards
Part # 76872, 76871, 76861, 76862

For Technical Support/Warranty Information please call 310-762-9944

Smittybilt, 400 West Artesia Blvd, Compton, CA 90220