



**INSTALLATION INSTRUCTIONS FOR 2011-2014
FORD 4WD SUPER DUTY F250-350
6" COIL SPRING SUSPENSION SYSTEM**

Requires the following parts for a complete installation:

- **DROP BRACKET KIT PART NUMBER (6861) – REQUIRES P/N 6861B, 6411H AND AAL6080B**
- **RADIUS ARM KIT PART NUMBER (6961) – REQUIRES P/N 6861B, 6412H, 6300A AND AAL6080B**

WARNING!!! READ AND UNDERSTAND ALL INSTRUCTIONS BEFORE PROCEEDING. MAKE SURE THAT YOU HAVE ALL TOOLS AND PARTS BEFORE BEGINNING THE INSTALLATION.

AS WITH ALL LIFT SYSTEMS, DRIVE SHAFT MODIFICATIONS MAY BE NECESSARY!!!

SPECIAL TOOLS REQUIRED:

- STEERING (PITMAN) ARM PULLER
- TIE ROD SEPARATING TOOL
- TORQUE WRENCH
- FORD SERVICE MANUAL

REVTEK SUSPENSION RECOMMENDS THAT RED LOCTITE BE USED ON ALL FASTENERS UNLESS OTHERWISE NOTED. IT IS ALSO RECOMMENDED TO HAVE THE FRONT END ALIGNMENT CHECKED AFTER INSTALLATION.

GENERAL NOTES:

1. THIS SYSTEM SHOULD ONLY BE INSTALLED BY A PROFESSIONAL.
2. Compare all contents of the boxes to the parts list before starting to insure all components are included.
3. Prior to installing the suspension system, inspect the vehicle's suspension components, alignment, and frame for damage, corrosion, or cracks. Correct any worn or damaged parts before beginning install.
4. Always wear safety glasses during installation
5. Unless otherwise noted, tighten all bolts to the torque specifications listed in the Torque Specification table included in these instructions. Use a torque wrench.
6. Estimated time to install this system is 4 hours.
7. Suspension components that use rubber or urethane bushings should be tightened with the vehicle at normal ride height. This will prevent premature failure of the bushing and maintain ride comfort.
8. Check off the step number at the beginning of each step when you finish it. Then when you stop during the installation, it will be easier to find where you need to continue from.

ATTENTION: Exhaust modification may be required on all 5.4 and V10 trucks at the front driveline.

Failure to determine if this modification is required may cause catalytic converter damage.

KIT CONTENTS INCLUDE:

- Instructions including parts list
- Product Safety Label (orange)
- Decals
- Warranty Information

| STANDARD BOLT TORQUE & IDENTIFICATION | | | | | | |
|--|--------------|--------------|----------------------|--------------|--------------|--------------|
| INCH SYSTEM | | | METRIC SYSTEM | | | |
| Bolt Size | Grade 5 | Grade 8 | Bolt Size | Class 9.8 | Class 10.9 | Class 12.9 |
| 5/16 | 15 ft. lbs. | 20 ft. lbs. | M6 | 5 ft. lbs. | 9 ft. lbs. | 12 ft. lbs. |
| 3/8 | 30 ft. lbs. | 35 ft. lbs. | M8 | 18 ft. lbs. | 23 ft. lbs. | 27 ft. lbs. |
| 7/16 | 45 ft. lbs. | 60 ft. lbs. | M10 | 32 ft. lbs. | 45 ft. lbs. | 50 ft. lbs. |
| 1/2 | 65 ft. lbs. | 90 ft. lbs. | M12 | 55 ft. lbs. | 75 ft. lbs. | 90 ft. lbs. |
| 9/16 | 95 ft. lbs. | 130 ft. lbs. | M14 | 85 ft. lbs. | 120 ft. lbs. | 145 ft. lbs. |
| 5/8 | 135 ft. lbs. | 175 ft. lbs. | M16 | 130 ft. lbs. | 165 ft. lbs. | 210 ft. lbs. |
| 3/4 | 185 ft. lbs. | 280 ft. lbs. | M18 | 170 ft. lbs. | 240 ft. lbs. | 290 ft. lbs. |

| | | | | | | |
|---|--|--|--|--|--|--|
| <p>1/2-13x1.75 HHCS</p> <p>D T L X</p> <p>Grade 5 Grade 8</p> <p>G= Grade Marking (bolt strength) L= Length (inches) D= Nominal Diameter (inches) X= Description (hex head cap screw) T= Thread Pitch (threads per inch)</p> | | | <p>M12-1.25x50 HHCS</p> <p>D T L X</p> <p>P= Property Class (bolt strength) L= Length (millimeters) D= Nominal Diameter (millimeters) X= Description (hex head cap screw) T= Thread Pitch (thread width, mm)</p> | | | |
|---|--|--|--|--|--|--|

**PRODUCT SAFETY LABEL MUST BE INSTALLED INSIDE CAB
IN PLAIN VIEW OF ALL OCCUPANTS**

KIT NUMBER 6961
W/RADIUS ARMS

| <u>HARDWARE KIT</u> | |
|--|------------|
| BOX 1 of 4 | |
| 6412H | <u>QTY</u> |
| TRACK BAR BRACKET | 1 |
| PITMAN ARM | 1 |
| 5" BLOCKS – FLAT | 2 |
| 5/8 X 3 1/4" X 17 1/2" SEMI ROUND TOP U-BOLT | 4 |
| 5/8" H/NUTS – PLAIN | 8 |
| 5/8" FLAT WASHER – PLAIN | 8 |
| CARRIER BEARING DROP BRACKET | 1 |
| SHOCK – REAR | 2 |
| SHOCK – FRONT | 2 |
| ZIP TIE | 6 |
| SWY BAR DRP BRKT R | 1 |
| SWY BAR DRP BRKT L | 1 |
| 10 X 1.5 X 35 BOLT | 4 |
| 10 X 1.5 FLANGE NUT | 2 |
| 10MM FLAT WASHER | 4 |
| OUTER BOX | 1 |

| <u>ADD-A-LEAFS</u> | |
|---------------------------|------------|
| BOX 3 OF 4 | |
| AAL6080B | <u>QTY</u> |
| 2" ADD-A-LEAF | 2 |
| PIN FOR ADD-A-LEAF | 2 |
| NUT FOR ADD-A-LEAF | 2 |

| <u>BOX KIT</u> | |
|-------------------------------------|------------|
| BOX 2 OF 4 | |
| 6861B | <u>QTY</u> |
| F250-350 SPRING | 2 |
| 2 DEGREE CASTER/CAMBER BUSHING | 2 |
| SHOCK STEM SPACER | 2 |
| EXT BRKT FOR BRAKE | 2 |
| 10 X 1.5 X 25 BOLT | 2 |
| 10 X 1.5 FLANGE NUT | 4 |
| 7/16-14 X 3 1/4" GRADE 8 HEX (ZINC) | 2 |
| SAE 7/16 FLAT WASHER (ZINC) | 2 |
| CARRIER BEARING DROP BRACKET | 1 |
| INSTRUCTION SHEET & SAFETY LABEL | 1 |
| 6.25 X 2 CLEAR MYLAR ITEM #705 | 4 |
| OUTER BOX | 1 |
| SWAY BAR BRKT | 2 |
| SWAY BAR POLY SLEEVE | 2 |
| SWAY BAR STEEL SLEEVE | 2 |
| 7/16-14 X 2 1/2" BOLT | 2 |
| 7/16-14 NYLOC NUT | 2 |
| 7/16 FENDER WASHER | 2 |
| 7/16 SAE FLAT WASHER | 2 |
| 3/8 U-BOLT | 2 |
| 3/8 FLANGE NUT | 4 |
| STEERING STAB SPACER | 1 |
| 12MM FLAT WASHER | 1 |
| 12 X 1.75 X 100 BOLT | 1 |
| BRAKE LINE BRACKET | 1 |
| 5/16" BOLT | 1 |
| 5/16" NUT | 1 |
| 5/16" WASHER | 2 |

| <u>RADIUS ARM BOX</u> | |
|------------------------------|------------|
| BOX 4 OF 4 | |
| 6300A | <u>QTY</u> |
| RADIUS ARM | 2 |
| RADIUS ARM BUSHING | 2 |
| M18 X 2.0 ALL METAL LOCKNUT | 1 |

KIT NUMBER 6861

| HARDWARE KIT | |
|--|------------|
| BOX 1 OF 2 | |
| 6411H | <u>QTY</u> |
| TRACK BAR BRACKET | 1 |
| PITMAN ARM | 1 |
| LEFT RADIUS ARM BRACKET | 2 |
| RIGHT RADIUS ARM BRACKET | 2 |
| RADIUS ARM SLEEVE | 4 |
| 3/4"X 5" NF BOLT GRADE 8 | 4 |
| GRADE "C" ALL METAL LOCKNUT 3/4" | 4 |
| 3/4" FLAT WASHER ZINC | 8 |
| 5" BLOCKS – FLAT | 2 |
| 5/8 X 3 1/4" X 17 1/2" SEMI ROUND TOP U-BOLT | 4 |
| 5/8" H/NUTS – PLAIN | 8 |
| 5/8" FLAT WASHER – PLAIN | 8 |
| CARRIER BEARING DROP BRACKET | 1 |
| SHOCK – REAR | 2 |
| SHOCK – FRONT | 2 |
| ZIP TIE | 6 |
| SWY BAR DRP BRKT R | 1 |
| SWY BAR DRP BRKT L | 1 |
| 10 X 1.5 X 35 BOLT | 4 |
| 10 X 1.5 FLANGE NUT | 2 |
| 10MM FLAT WASHER | 4 |
| OUTER BOX | 1 |

| ADD-A-LEAFS | |
|--------------------|------------|
| AAL6080B | |
| | <u>QTY</u> |
| 2" ADD-A-LEAF | 2 |
| PIN FOR ADD-A-LEAF | 2 |
| NUT FOR ADD-A-LEAF | 2 |

| BOX KIT | |
|-------------------------------------|------------|
| BOX 2 OF 2 | |
| 6861B | <u>QTY</u> |
| F250-350 SPRING | 2 |
| 2 DEGREE CASTER/CAMBER BUSHING | 2 |
| SHOCK STEM SPACER | 2 |
| EXT BRKT FOR BRAKE | 2 |
| 10 X 1.5 X 25 BOLT | 2 |
| 10 X 1.5 FLANGE NUT | 4 |
| 7/16-14 X 3 1/4" GRADE 8 HEX (ZINC) | 2 |
| SAE 7/16 FLAT WASHER (ZINC) | 2 |
| CARRIER BEARING DROP BRACKET | 1 |
| INSTRUCTION SHEET & SAFETY LABEL | 1 |
| 6.25 X 2 CLEAR MYLAR ITEM #705 | 4 |
| OUTER BOX | 1 |
| SWAY BAR BRKT | 2 |
| SWAY BAR POLY SLEEVE | 2 |
| SWAY BAR STEEL SLEEVE | 2 |
| 7/16-14 X 2 1/2" BOLT | 2 |
| 7/16-14 NYLOC NUT | 2 |
| 7/16 FENDER WASHER | 2 |
| 7/16 SAE FLAT WASHER | 2 |
| 3/8 U-BOLT | 2 |
| 3/8 FLANGE NUT | 4 |
| STEERING STAB SPACER | 1 |
| 12MM FLAT WASHER | 1 |
| 12 X 1.75 X 100 BOLT | 1 |
| BRAKE LINE BRACKET | 1 |
| 5/16" BOLT | 1 |
| 5/16" NUT | 1 |
| 5/16" WASHER | 2 |

FRONT OF VEHICLE – DISASSEMBLY AND ASSEMBLY

1. Park vehicle on level, hard (concrete) surface.
2. Block the rear wheels of the vehicle to prevent vehicle from moving in either direction. Set parking brake.
3. Remove the track bar bolt 30 mm (save for later use) on the driver side of the frame mount **Fig. 1** and the tie rod end from the pitman arm. Use 15/16 wrench.
4. Raise the front of vehicle and support with jack stands on the frame behind the front radius arm hangers. **Fig. 2**
5. Remove the front wheels.
6. Support the front axle with a floor jack.
7. Remove the brake line brackets from the lower spring buckets and loosen the upper sway bar end link nuts and bolts so that the sway bar can move freely **Fig. 3**
8. Free up the vacuum lines at both ends of the radius arms so that you can create enough “slack” in them to accommodate the lift. Leave them loose at this time. **Fig. 4**
9. Remove upper sway bar bolts that secure the sway bar to the frame and move the sway bar down out of the way. (Save bolts for later re-use.)
10. Remove front shocks (saving lower bolts for reinstallation).
11. Remove front brake lines from frame and save OE bolts for later re-use.
12. Stretch the hard lines very carefully so that you create about 4” of slack.
13. Install the Revtek bracket to the frame with the OEM bolt where the brake line was just fastened to the frame but do not fasten the hard line to the drop bracket until step 27. **Fig. 5**
14. Remove the track bar bracket. 21mm deep socket on passenger side (3 spots). 18mm socket on driver side (2 spots).
15. Remove pitman arm from sector shaft on steering box. 1-13/16” socket and special pitman arm puller.
16. While supporting front differential, lower the axle with a floor jack, then remove the driver and passenger side coil springs.
17. Install new pitman arm using Red Locktite. 1-13/16” impact socket Torque to 350 ft. lbs. **Fig. 6**
18. Install new track bar bracket. Install all of the hardware before you tighten any of the hardware. This will help insure proper alignment and save you some frustration. Passenger side – 21mm deep socket (3 ea.). Torque 120 Ft. lbs. Driver side – 18mm socket (2 ea.). Torque 120 ft. lbs. **Fig 6 NOTES: THE NEW TRACK BAR BRACKET INSTALLS TO THE BACK SIDE OF THE CROSSMEMBER.**
19. While the frame is still being supported by jack stands also support the front axle with jack stands. Now use a floor jack to support the radius arms while removing the rear radius arm bolt (save for reinstallation) using 24mm wrench and socket.
20. Remove front bolts attaching the radius arm to the front axle and remove factory radius arm. (Save OEM bolts for re-installation).

Radius Arm Kit – Skip to next page if you have Drop Bracket Kit

21. Replace OEM Radius arm with new Revtek Tubular radius arm. Insert factory bolts and nuts in all spots on radius arm. (Use new supplied Revtek all metal locknut on the upper driver’s side only). Do not tighten at this time.
22. Repeat this process on the other side of the vehicle.
23. Please use new zip ties to re-attach the factory line that was on the OEM radius arm
24. Torque radius arm bolts to 221 ft. lbs.

Drop Bracket Kit

21. While the frame is still being supported by jack stands also support the front axle with jack stands. Now use a floor jack to support the radius arms while removing the rear radius arm bolt (save for reinstallation) using 24mm wrench and socket. Now carefully lower the back of the radius arms down “**one side at a time**” about 4.5” and slide the new hangers in place.
22. Install the sleeves between the hanger plates and install the new 3/4”x 5” bolts with nuts and washers (do not tighten). **Fig. 7**
23. Install the OEM radius arms to the new hangers using OEM hardware saved in step 25 using 24mm socket and wrench. **DO NOT TIGHTEN. Fig. 8**
24. Tighten the radius arm hanger bolts to 221 ft. lbs. using 1 1/8” socket & wrench.
25. Torque radius arm bolts to 221 ft. lbs.

Continued from either kit

26. Install the new coil springs (leave the rubber isolator on the spring) and place the entire assembly into the lower spring bucket making sure the spring end at the bottom of the spring touches the stop on the bucket. Raise the axle until the springs are trapped in their location.
27. Install the aluminum spacers, with the counter bore facing down, to the top of the R2515S Revtek front shocks. Use a 3/4” ratchet wrench top, 18mm socket bottom. Torque to 111 ft. lbs. **Fig. 15**
28. Install the draglink to the small end of the pitman arm using 15/16” socket or wrench and reinstall cotter key. Torque to 85 ft lbs.
29. Install the lower brake line bracket to the lower spring bucket; you may have to manipulate the shape of the bracket a bit. 10mm socket, Torque to 13 ft. lbs.
30. Install the brake lines to the bottom hole of the brake line extension brackets. **Fig. 5**
31. Install zip ties to hold the lines that you loosened up in step 9
32. Zip ties suggestion for rear of radius arm on driver side **Fig. 9**
33. Zip ties suggestion on front driver side of radius arm. **Fig. 10 & Fig. 11**
34. Install track bar into the track bar bracket using the OEM bolt (30mm). You may have to jog the steering wheel a bit to get the hole to line up. Torque to 406 ft. lbs.
35. Install the sway bar drop brackets to the frame using the OEM bolts and secure the sway bar to the drop brackets using the supplied 10mm hardware. **Fig. 12**
36. Install tires. Set vehicle on ground and torque wheels to factory specs.
37. Now tighten the radius arm bolts using 24mm socket & wrench. Torque to 221 ft lbs.
38. Tighten the upper sway bar end link bolts and nuts.
39. Install the front steering stabilizer drop spacer and top out spacer between the steering stabilizer and the upper cross member bracket using the supplied 12 x100 bolt and flat washer (re-use the OEM lock nut.) **Fig. 18**
40. Make sure you have adequate clearance between tires & brake lines.

REAR OF VEHICLE – DISASSEMBLY AND ASSEMBLY

1. Block front wheels to prevent vehicle from moving in either direction.
2. Lift the vehicle from the center of the rear differential housing, leaving the jack in place to support the differential.
3. Support the frame with jack stands forward of the rear springs.
4. Remove rear wheels and shocks.
5. Remove the U-bolts and anchor plate on driver side only.
6. Carefully bend brake line bracket down at frame and relocate vent tube clip to lower part of frame.
7. Carefully lower the floor jack, while watching for brake line extension: Undo brake line bracket from differential if necessary to prevent damage.
8. Clamp the spring assembly together securely with two C-clamps or a large bench vise.
9. Loosen the nut and remove the center bolt. If necessary, hold the head of the center bolt with locking pliers.
10. Insert the new ADD-A-LEAF into the spring pack, placing it on the bottom of the pack and above the overload.
11. Install the NEW center bolt and nut with the pin side at the bottom of spring pack.
12. Tighten the center bolt to 20 ft-lbs and cut off excess threads.
13. Align the center bolt with the hole in the new 5” lift block. (**NOTE:** The realignment of center pin may require slight loosening of opposite side U-bolts.)
14. Install the anchor plate and the new U-bolt hardware. Torque U-bolts to 140 ft lbs. **RE-TORQUE** these after first test drive and every 500-1000 miles after that.
15. Repeat steps 5 through 14 for the other side.
16. Separate and remove the e-brake cable from the lower front spring eye mount on the driver’s side. Re-locate cable under the leaf spring and re-connect cable to bracket and main line.
17. Bend emergency brake cable bracket down to a horizontal plane. **Fig. 13**
18. Reinstall emergency brake cable bracket back to the top of the rear U-bolt top plate stud.
19. Using Revtek bracket and 5/16” hardware re-attach brake line to rear differential
20. Install Revtek shocks P/N R3319 and torque hardware to specs.
21. Cut off excess U-bolt to prevent body damage, if applicable.
22. Install tires and lower vehicle to ground. Torque wheels to factory specs.
23. Tighten both front and rear spring pivot bolts, and the shackle bolts to 80 ft-lbs.
24. Install (1) carrier bearing drop bracket with supplied 7/16”x 2” bolt and washers. (**NOTE:** Some vehicles may require major driveshaft modifications or more or less shimming to correct vibrations.)
25. CHECKS AND ADJUSTMENTS:
 - Check all hardware for tightness after 100 miles and after off road use.
 - Headlights should be adjusted.
 - Vehicle must be aligned.

REAR SWAY BAR BRACKET

24. Remove the nut that attaches the sway bar to the end link on both sides of the truck.
25. Assemble the rear sway bar end link bracket by pressing in the poly bushing and metal sleeve.
26. Install the new end links re-using the OE nut on the center of the bracket and attach the u-bolt around the end link and torque the 3/8" flange nuts to 15 ft. lbs.
27. Re-install the sway bar to the bracket using the 7/16" x 2 1/2" bolt, flat washers, and lock nut. **Fig. 17**

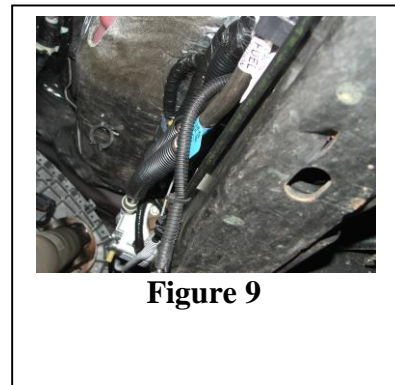
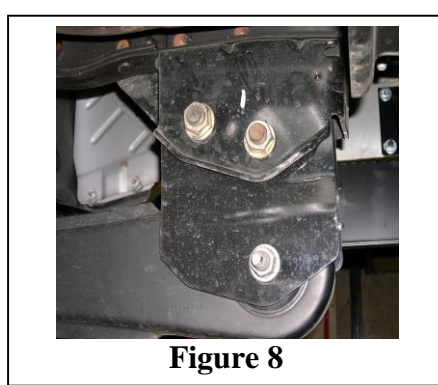
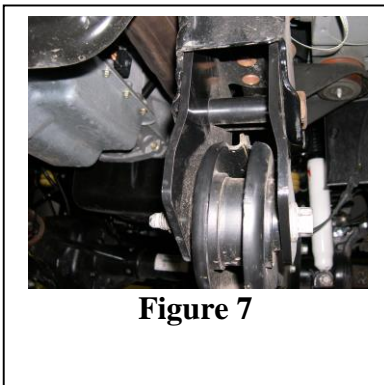
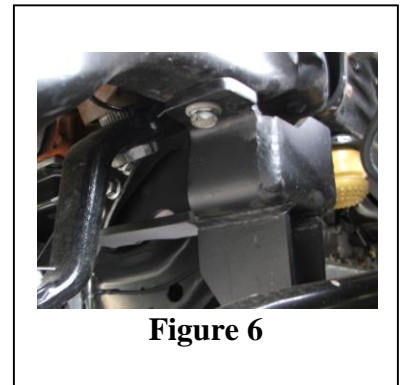
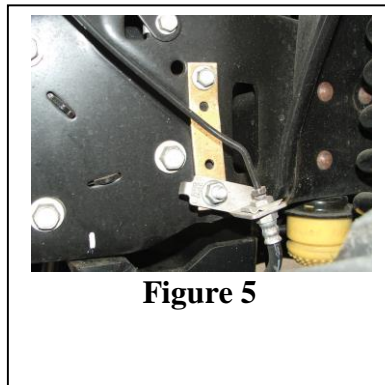
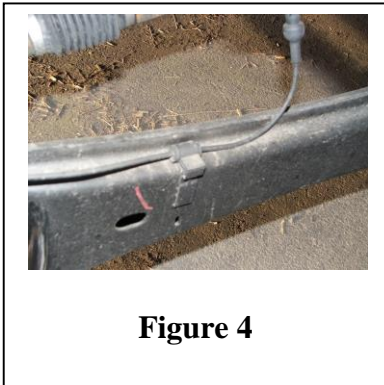
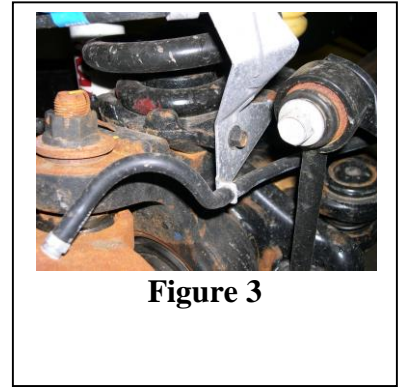
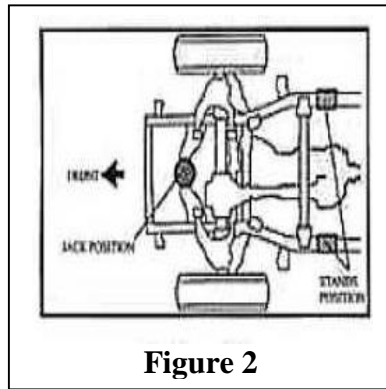
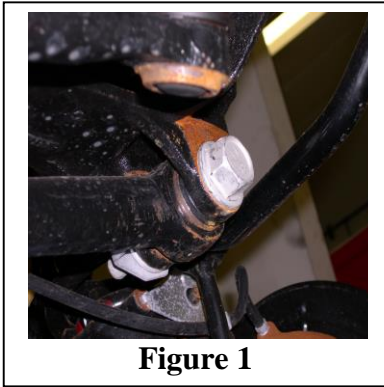




Figure 10



Figure 11



Figure 12



Figure 13



Figure 15

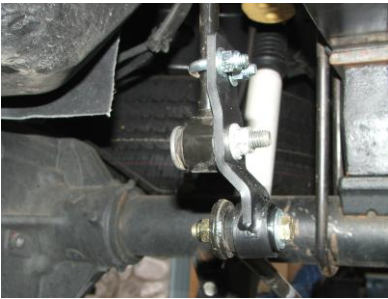


Figure 17



Figure 18



Limited Lifetime Warranty

Revtek Suspension products are warranted to be free from material and workmanship defects for as long as the original retail purchaser owns the vehicle upon which such products were originally installed (proof of purchase required). The consumer will be responsible for removing from the vehicle and returning any defective item, freight prepaid, and for reinstallation. This warranty is non-transferable. Revtek Suspension's limit of liability under this warranty is to repair or replace the product at Revtek Suspension's option. Consequential costs such as, but not limited to labor fees, loss of use, loss of time or freight charges are not covered. Any product that has been abused, altered incorrectly installed, or used in competition is not covered. Product finish is excluded from this warranty. Items that are subject to wear are not considered defective when worn and are not covered. The warranty is void if the "Warning to Driver" decal is not properly displayed on the vehicle. No other warranties are expressed or implied. We reserve the right to make changes in design, materials, and specifications without prior notice.

This warranty gives you specific legal rights and you may also have other rights which may vary from state to state. Some states do not allow limitations on how long an implied warranty lasts or allow the exclusion or limitation of incidental or consequential damages, the above limitation or exclusion may not apply to you.

Other than stated above, there are no warranties.

SELLER DISCLAIMS ANY IMPLIED WARRANTY OF MERCHANTABILITY

SELLER DISCLAIMS ANY IMPLIED WARRANTY OF FITNESS FOR A PARTICULAR PURPOSE

This warranty to be free from material and workmanship defects shall not apply to any product which has been improperly installed modified or customized and does not apply to any components used for racing purposes or racing type activities.

To make a claim under this warranty to be free from material and workmanship defects, contact Revtek Suspension about the problem prior to removing any parts from the vehicle. If it appears that the part is warrantable, you will be given a Return Authorization (RA) number and asked to return the part freight prepaid. If the part is found to be warrantable, it will be repaired or replaced and returned to you. All freight charges are the customer's responsibility. If a replacement part is needed before the part in question can be returned, you must first purchase the replacement part. Then if the part in question is deemed warrantable, you will be credited / refunded.

Shocks and bushings are considered to be wear items. As such, they will be covered for a period of 12 months from the original installation. Any failure outside of 12 months will be considered typical wear.

REVTEK SUSPENSION, LLC 503-659-1650
15800 SE Piazza Ave #104, Clackamas OR 97015